

# Transportation Improvement Program 2026-2029



**Cheyenne Metropolitan  
Planning Organization**

Prepared by:  
The Cheyenne Metropolitan Planning Organization

In cooperation with:  
The Wyoming Department of Transportation  
The U. S. Department of Transportation  
The Federal Highway Administration  
The Federal Transit Administration

*Adopted by the Policy Committee on June 4, 2025*

# Table of Contents

<b>I.</b>	<b>Introduction</b>	<b>1</b>
	Background	1
	The Bipartisan Infrastructure Legislation (BIL) Act	1
<b>II.</b>	<b>The Transportation Improvement Program</b>	<b>3</b>
	Introduction	3
	TIP Contents	3
	Project Selection	4
	Approval	5
<b>III.</b>	<b>Performance Measures Potential Impacts</b>	<b>6</b>
<b>IV.</b>	<b>Recommended Projects and Programs</b>	<b>9</b>
	<b>Table 1 – FY '26 Highest Priority Federally Funded Projects for the Cheyenne Urbanized Area</b>	<b>11</b>
	<b>Table 2 – FY '26 Highest Priority State and Local Funded Projects for the Cheyenne Urban Area</b>	<b>14</b>
	<b>Table 3 – FY '26 – '29 Project Listing</b>	<b>17</b>
	City of Cheyenne	
	Cheyenne Transit Program	
	Laramie County	
	Wyoming Department of Transportation	
	<b>Table 4 – Estimate of Available Funds for FY '26 – '29 Transportation Projects</b>	<b>33</b>
	<b>Appendix A: Funding Definitions</b>	<b>34</b>
	<b>Appendix B: Maps</b>	<b>35</b>
	<b>Appendix C: Certification Statement</b>	<b>40</b>

# I - Introduction

## Background

The Cheyenne Metropolitan Planning Organization (MPO) was established on October 27, 1981 by the Governor of the State of Wyoming and is responsible for ensuring that federal funds for transportation projects in the urban area are spent in compliance with local government development guidelines and federal regulations.

The MPO is responsible for developing transportation policies and coordinating the various federal, state, and local agencies involved in long-range transportation planning and project development. The geographic area the MPO is involved with is defined by the Metropolitan Planning Boundary which is the Cheyenne area's twenty-five-year socioeconomic growth area.

A comprehensive, cooperative, and continuing (3C) planning process is necessary for the Cheyenne MPO to plan for Cheyenne's future transportation needs. A major part of this process involves citizens' input and a three-committee format that produces an ongoing attempt to satisfy present and future travel demands, as well as to provide transportation needs for a growing population and economic base.

The policies for the Cheyenne MPO are established through the Online Citizens Advisory Committee, Technical Committee, and Policy Committee. These committees also help decide how the Federal Planning Funds (PL), 5303 Transit Planning Funds, and Federal Surface Transportation-Urban Program (STP-U) Funds for construction will be spent within the urban area. The committees, as required, develop this Transportation Improvement Program (TIP) to facilitate the "3C" planning process.

## The IIJA Act

On November 15, 2021, the President signed the Infrastructure Investment and Jobs Act (IIJA) (Public Law 117-58, also known as the "Bipartisan Infrastructure Law") into law. The Bipartisan Infrastructure Law is the largest long-term investment in our infrastructure and economy in our Nation's history. It provides \$550 billion over fiscal years 2022 through 2026 in new Federal investment in infrastructure, including in roads, bridges, and mass transit, water infrastructure, resilience, and broadband.

In a memo dated February 24, 2023 guidance from the FHWA states they support the following goals:

- Improving the condition, resilience, and safety of road and bridge assets consistent with asset management plans (including investing in preservation of those assets) [23 U.S.C 119];



- Promoting and improving safety for all road users, particularly vulnerable users, and supporting major actions and goals consistent with the U.S. Department of Transportation's January 2022 National Roadway Safety Strategy for safer people, safer roads, safer vehicles, safer speeds, and enhanced post-crash care [23 U.S.C. 148];
- Supporting accelerated project delivery and an efficient environmental review process through the One Federal Decision framework and by continuing to coordinate with other Federal partners to ensure that the benefits of projects are realized as soon as possible [23 USC 139];
- Making streets and other transportation facilities accessible to all users and compliant with the Americans with Disabilities Act [49 CFR 37];
- Addressing environmental impacts ranging from storm water runoff to greenhouse gas emissions [23 U.S.C. 175, 23 USC 176];
- Prioritizing infrastructure that is less vulnerable and more resilient to a changing climate [23 USC 101, 23 USC 119, 23 USC 176, 23 USC 520];
- Future-proofing our transportation infrastructure by accommodating new and emerging technologies like electric vehicle charging stations, renewable energy generation, and broadband deployment in transportation rights-of-way [sec. 11401 of BIL, 23 CFR 645]; and
- Reconnecting communities and reflecting the inclusion of disadvantaged and under-represented groups in the planning, project selection, and design process [sec. 11509 of BIL].

The Federal Highway Administration remains committed to ensuring progress in safety, resilience, and equity in the delivery of the Federal-aid Highway Program. We also recognize that States, territories, and local governments are on the front line of maintaining and building transportation infrastructure. Working together with our stakeholders we have begun the successful implementation of the largest investment in transportation in modern history. Together we will help State departments of transportation and other entities deliver good policies, programs, and projects for the American people as we undertake this transformational work.

# II - The Transportation Improvement Program

## Introduction

A Transportation Improvement Program (TIP) is a staged, multi-year program of capital transportation improvements including all modes of transportation. The TIP must be updated at least every four years and cover a period of four years. The TIP must include a priority list of projects and at a minimum, group the projects by priority for each year.

The Metropolitan Planning Organization and the State Transportation Department (WYDOT) must cooperate in the selection of each project and in the development of the TIP. The frequency and cycle for updating the TIP must be compatible with the State Transportation Improvement Program (STIP) development and approval process. Once approved by the Policy Committee, and upon the approval of the Governor or the Governor's designee, the TIP becomes part of the STIP. Although metropolitan TIPs do not need to be approved by the Federal Highway Administration (FHWA) or the Federal Transit Administration (FTA), copies of any new or amended TIPs must be provided to each agency.

In developing the program, the Metropolitan Planning Organization shall provide citizens, affected public agencies, representatives of transportation agency employees, other affected employee representatives, private providers of transportation, and other interested parties with a reasonable opportunity to comment on the proposed program.

The TIP must be financially constrained by year and include a financial plan that demonstrates which projects can be implemented using current revenue sources. The financial plan shall be developed by the MPO in cooperation with the State and the Transit operator. The State is required to provide the MPO with estimates of available Federal and State funds which may be utilized in developing the TIP financial plan.

## TIP Contents

The TIP is a "living document" and can be amended with the approval of the MPO Policy Committee. The TIP focuses on projects that will require four years or fewer to implement. Within the four-year span, projects may be delayed or accelerated according to present needs. This flexibility enhances coordination among local and state agencies. Coordination among related projects saves money and decreases disruptions to the transportation system. The TIP is evaluated annually, and an annual increment of improvements is added to maintain its full multi-year program.

The TIP does not constitute an appropriation of funds, nor replace the normal funding programs. The TIP is intended to serve as a fiscal management tool to assist State and local agencies with matching needs to resources. All federal projects eligible for placement in the TIP should be

consistent with the approved Long-Range Master Transportation Plan. An update to the Cheyenne MPO's Master Transportation Plan, known as *Connect 2045*, was adopted, and approved in December 2020. Federally funded projects found in this TIP originated from PlanCheyenne – Connect 2045.

The TIP should contain the following basic elements:

1. All transportation projects, or identified phases of a project, including pedestrian walkways, bicycle transportation facilities, and transportation enhancement projects within the metropolitan planning area proposed for funding under Title 23, U.S.C., and the Federal Transit Act.
2. Projects that are consistent with the adopted and approved Master Transportation Plan (Connect 2045).
3. All regionally significant transportation projects for which an FHWA or FTA approval is required, whether or not the projects are to be funded with title 23, U.S.C., or Federal Transit Act funds.

The projects listed in the TIP should also include: a sufficient description of the project; a cost estimate; the amount of federal funds proposed to be obligated during each program year; and identification of the agencies responsible for carrying out the project.

*NOTE: Private developments occasionally have infrastructure and transportation improvements imposed upon them to mitigate their impacts to the public transportation system. The TIP does not include those projects.*

## Project Selection

The evaluation of candidate improvement projects, and the selection of those to be included in the FY '26 - '29 TIP are based on the following considerations:

**1 - Project Criterion:** Projects listed in this four-year improvement program are chosen, ideally, using the latest FHWA guiding principles outlined in the Introduction. Through the established planning process, a twenty-five-year master transportation plan is adopted. This plan call Connect 2045 prioritizes proposed transportation projects whose completion is desired within a twenty-five-year period with regard to financial constraints. For federally funded projects to be listed in a TIP, they must first be established in the Master Transportation Plan and, for the most part, given a high priority.

**2 - Prioritization of Projects:** Once validated as a viable transportation project through the Master Transportation Plan process, the proposed projects are prioritized to assess their relative importance and to determine the appropriate year for project initiation. Considerations are given to compatibility with adopted community goals and objectives and expressed level of need.

New projects listed in the TIP were selected and prioritized by the local agencies by their own selection process. Local projects are further prioritized by the 5<sup>th</sup> and 6<sup>th</sup> Penny Optional Sales Tax public selection process. Projects which are already programmed were not prioritized along with those that are not currently programmed. (Recommended prioritizations of roadways are only a suggestion. Other factors such as funding availability, coordination with other agencies, and political needs may alter when projects commence).

**3 - Economic Feasibility of Projects:** This phase of the process consists of an evaluation of each project's cost relative to the community's total transportation needs and resources. The financial plan demonstrates what funding sources will be utilized, and whether there are enough funds allocated to secure all selected projects.

**4 - Public Input:** Cheyenne MPO assures that the citizens in the Cheyenne area, affected public agencies, representatives of transportation agency employees, private transportation providers (currently, there are none), and other interested parties will have an opportunity to comment on the proposed TIP before adoption. The Cheyenne MPO Technical Committee approved the proposed TIP at their regular meeting held May 21, 2025. This document was available in the office and was posted on the MPO's website on May 21, 2025 and it was sent to our MPO Online Citizens Advisory Committee for comment. We received 20 responses.

**5 - Other Considerations:** In terms of selecting a project for construction, the IIJA Act provides additional flexibility within the four-year period on a TIP. Any project identified within the initial four-year period may be accelerated or delayed based on current funds, needs, or priorities. If a newly identified federally funded project is to be considered for placement in the TIP, it must be presented to the transportation planning committees for their approval, placed into the Master Transportation Plan, and then added to the TIP. If approved, an amendment is then placed on the existing TIP to identify the newly advanced project.

## Approval

After approval by the Cheyenne MPO Policy Committee, the Transportation Improvement Program is presented to the Wyoming Department of Transportation for inclusion in the State Transportation Improvement Program. The STIP is then sent to the Governor of the State for approval.

### III - Performance Measures Potential Impacts

Transportation planning has used performance measures for a long time, but the Federal Highway Act *Moving Ahead for Progress in the Twenty-first Century* (MAP-21) emphasized the linkage between performance measures and the allocation of resources. Performance-based planning encourages Metropolitan Planning Organizations (MPOs), and the States' Department of Transportation to allocate resources to those areas where improvements are needed. Identified performance measures monitor the performance of the system and should affect the allocation of additional resources. The Federal Highway Act *Fixing America's Surface Transportation Act* (FAST) *Infrastructure Investment and Jobs Act (IIJA)* continued the requirement of linking performance to the planning and programming process. Congress approved five national priorities which cover the performance of the transportation system, and two others were developed to evaluate the process of designing and constructing projects with Federal transportation funds. The national priorities are:

- **Safety** - To achieve a significant reduction in traffic fatalities and serious injuries on all public roads.
- **Infrastructure Condition** - To maintain the highway infrastructure asset system in a state of good repair.
- **Congestion Reduction** - To achieve a significant reduction in congestion on the National Highway System.
- **System Reliability** - To improve the efficiency of the surface transportation system.
- **Freight Movement and Economic Vitality** - To improve the national freight network, strengthen the ability of rural communities to access national and international trade markets, and support regional economic development.
- **Environmental Sustainability** - To enhance the performance of the transportation system while protecting and improving the natural environment.
- **Reduced Project Delivery Delays** - To reduce project costs, promote jobs and the economy, and expedite the movement of people and goods by accelerating project completion through eliminating delays in the project development and delivery process, including reducing regulatory burdens and improving agencies' work practices.

The FHWA worked extensively with the Wyoming Department of Transportation and the two Wyoming MPOs to prepare for the implementation of the required Performance Measures and Targets. On March 1, 2023, the Cheyenne MPO Policy Committee approved an agreement for the Cheyenne MPO and Cheyenne Transit Program.

This following section lists the four main measures that the Cheyenne Urban Area will track. They include Safety, Infrastructure Condition (pavement and bridge), Congestion Reduction (travel time and freight reliability) and Transit Asset Management. Each section shows the

state's or MPO's target and actual measure. In Tables 1 and 4, the project will identify which performance measure will be benefitted by the construction or application of that project, if applicable.

## Safety

The five safety performance measures relate to the reduction of fatal and serious injury crashes to include both motorized and non-motorized transportation. The Cheyenne MPO has agreed to adopt WYDOT's targets as shown in the table below.

Area	Measure	2018-2022 Target Max	2018-2022 Actual	Target Met?
PM <sub>1</sub> - Safety	Number of Fatalities	≤ 128	125.8	Yes
PM <sub>1</sub> - Safety	Rate of Fatalities	≤ 1.35	1.246	Yes
PM <sub>1</sub> - Safety	Number of Serious Injuries	≤ 450	425.2	Yes
PM <sub>1</sub> - Safety	Rate of Serious Injuries	≤ 5	4.204	Yes
PM <sub>1</sub> - Safety	Number of Non-Motorized Fatalities and Number of Non-Motorized Serious Injuries	≤ 30	31.6	No

## Infrastructure Condition

These include four performance measures on pavement conditions and two performance measures for bridge conditions. They identify the percentage of Interstate Highways in good and poor condition, the percentage of non-interstate National Highway System (NHS) in good and poor conditions and the percentage of NHS bridges in good and poor conditions. The Cheyenne MPO has agreed to adopt WYDOT's targets as shown in the table below.

Area	Measure	Target	FY 2022 Actual	Target Met?
PM <sub>2</sub> - Pavement	Percentage of Interstate Pavements in Good Condition	≥ 40%	61.5%	Yes
PM <sub>2</sub> - Pavement	Percentage of Interstate Pavements in Poor Condition	≤ 5%	1%	Yes

PM2 - Pavement	Percentage of non-Interstate NHS Pavements in Good Condition	$\geq 40\%$	42.2%	Yes
PM2 - Pavement	Percentage of non-Interstate NHS in Poor Condition	$\leq 10\%$	1.1%	Yes
PM2 - Bridge	Percentage of NHS Bridges in Good Condition	$\geq 10\%$	22.9%	Yes
PM2 - Bridge	Percentage of NHS Bridges in Poor Condition	$\leq 10\%$	4.3%	Yes

## System Reliability and Freight

These include two performance measures on the percentage of person-miles traveled where the Level of Travel Time Reliability (LOTTR)  $> 1.50$ . Ratio of 80<sup>th</sup> percentile to 50<sup>th</sup> percentile travel time (with overall system performance then normalized for length, volume, and vehicle occupancy). The performance measure concerning freight movement is Truck Travel Time Reliability (TTTR). The TTTR is the ratio of the 95<sup>th</sup> percentile to the 50<sup>th</sup> percentile travel time (weighted by segment lengths). The Cheyenne MPO has agreed to adopt WYDOT's targets as shown in the table below.

Area	Measure	Target	Actual	Target Met?
PM3 - Reliability	Interstate Time Travel Reliability LOTTR	$\geq 96\%$ Min	99.9%	Yes
PM3 - Reliability	Non-Interstate NHS Time Travel Reliability LOTTR	$\geq 88\%$ Min	91.8%	Yes
PM3 - Freight	Interstate Truck Travel Time Reliability TTTR	$\leq 1.28\%$ Max	1.22%	Yes

## Transit Asset Management

Transit Asset Management (TAM) is a business model that uses the condition of assets to guide the optimal prioritization of funding at transit properties in order to keep our transit networks in a State of Good Repair (SGR). The purpose of the National TAM System is to keep our Nation's assets in a State of Good Repair (SGR). Consequences of not being in an SGR include safety risks, decreased system reliability, higher maintenance costs, and lower system performance. The Cheyenne MPO has agreed to adopt WYDOT's targets as shown in the table below.

Area	Measure	1-year Target	Current Condition	Condition Year
Transit	Transit Rolling Stock Useful Life Benchmark (% in poor state of good repair)	≤ 60% Max	18.0%	2021
Transit	Transit Equipment Service Vehicles Exceeding Useful Life Benchmark (% in poor state of good repair)	≤ 65% Max	100%	2021
Transit	Facilities Useful Life Benchmark (% of poor state of good repair)	= 0%	0%	2021

The Cheyenne Transit Program coordinates with the WYDOT Transit Office on the Asset Management Program. In order to keep the bus fleet current and functional, the CTP purchases two to three new buses each year, therefore replacing the older high-mileage buses. Concerning safety and security, the CTP has added new surveillance cameras and recording devices on the buses, as funds allow. These expenses are listed within this TIP.

## IV - Recommended Projects and Programs

The following sections summarize the projects prioritized for advancement during the four-to-five-year planning period of the TIP.

TABLE 1 summarizes the **federally-funded** transportation-related projects which have been offered by the different agencies for construction, reconstruction or other various types of activity in Fiscal Year '26.

TABLE 2 summarizes the transportation-related projects which have been offered by the different agencies for construction, reconstruction or other various types of activity in Fiscal Year '26, which **are not funded** by the Federal Government.

TABLE 3 summarizes by agency all the transportation-related projects in the Metropolitan Planning Area which are scheduled to be completed during the four-year period. Projects are organized by year and are not shown in order of priority.

TABLE 4 summarizes the projected funds which will be made available to the different agencies for transportation projects. This financial plan is provided to show that projected projects do not exceed projected revenues.

Appendix A explains the abbreviations used in the Funding Source column.



Appendix B includes maps showing project locations.

Appendix C is the MPO "Self-Certification" Statement.

*Note: The Transportation Planning Process Committees have reviewed these projects and have concurred with the priorities assigned by the various agencies.*

**TABLE 1**  
**FISCAL YEAR 2026 FEDERALLY FUNDED PROJECTS CHEYENNE URBAN AREA**

<b>CITY</b>	<b>Parsley Blvd Greenway Connector: W. 3rd Ave south, across I80 bridge to connection at WAPA easement</b> Performance Measure: Safety			
		F	TAP GRANT	\$630,000
		L	SALES TAX	\$70,000
	<b>Total Federal Funds:</b>			<b>\$630,000</b>
	<b>Total:</b>			<b>\$700,000</b>

<b>CITY</b>	<b>18th St Reconstruction (Reed Ave to House Ave) Design and Construction</b> Performance Measure: Safety			
		F	FEMA GRANT	\$125,000
		L	SALES TAX	\$25,000
	<b>Total Federal Funds:</b>			<b>\$125,000</b>
	<b>Total:</b>			<b>\$150,000</b>

<b>CITY</b>	<b>Clear Creek In-Line Regional Stormwater Detention Facility Design and Construction</b> Performance Measure: Environmental Sustainability			
		F	FEMA GRANT	\$131,250
		L	SALES TAX	\$43,750
	<b>Total Federal Funds:</b>			<b>\$131,250</b>
	<b>Total:</b>			<b>\$175,000</b>

<b>TRANSIT</b>	<b>Transit Buses Purchase</b> Performance Measure: Transit			
		F	FTA 5307	\$636,559
		L	MATCHTRAN	\$71,119
	<b>Total Federal Funds:</b>			<b>\$636,559</b>
	<b>Total:</b>			<b>\$707,678</b>

<b>TRANSIT</b>	<b>RENOVATIONS Westland Rd Building</b> Performance Measure: Transit			
		F	FTA 5339	\$95,986
		F	FTA 5307	\$2,506,102
		L	MATCHTRAN	\$645,723
	<b>Total Federal Funds:</b>			<b>\$2,602,088</b>
	<b>Total:</b>			<b>\$3,247,810</b>

**TABLE 1**  
**FISCAL YEAR 2026 FEDERALLY FUNDED PROJECTS CHEYENNE URBAN AREA**

TRANSIT	GENERAL OPERATING ASSISTANCE & CAPITAL			
		F	FTA 5307	\$1,107,131
		S	Section IIIB	\$4,725
		S	Section 5311	\$360,000
		L	MATCHTRAN	\$907,131
	Total Federal Funds:			\$1,107,131
	Total:			\$2,378,987
WYDOT	Transportation District 1 I-25 Structure No AAO, AAN, mm 8.44 - Structure Repair			
STP_BR	Performance Measure: Bridge	F	STP-BR	\$525,975
B261030		S	STATE MATCH	\$55,277
	Total Federal Funds:			\$525,975
	Total:			\$581,252
WYDOT	Remove Structure on CN210 Pershing Bridge mm 8.21			
STP-BROS	Performance Measure: Bridge	F	STP-BROS	\$480,061
CN02110		L	SALES TAX	\$50,452
	Total Federal Funds:			\$480,061
	Total:			\$530,513
WYDOT	DELL RANGE INTERSECTION WITH US 30 - Whitney Rd from US 30 to and including intersection with Dell Range and Dell Range from Whitney east to new intersection with US 30. (LARAMIE COUNTY)			
STPU-CH	Performance Measure: Pavement	F	STPU-CH	\$7,880,359
B221004		L	UNDETERMINED	\$821,314
	Total Federal Funds:			\$7,880,359
	Total:			\$8,701,673
WYDOT	DELL RANGE INTERSECTION WITH US 30 - Whitney Rd from US 30 to and including intersection with Dell Range and Dell Range from Whitney east to new intersection with US 30. (CITY OF CHEYENNE)			
STPU-CH	Performance Measure: Pavement	F	STPU-CH	\$5,319,572
B231031		L	SALES TAX	\$2,066,428
	Total Federal Funds:			\$5,319,572
	Total:			\$7,386,000
WYDOT	College Drive/Fox Farm-Campstool Way/Wy 212 Structure No. DBV, DBW, DBX mm 5.42-6 Pavement Rehab			
STP	Performance Measure: Bridge	F	STP	\$9,407,000
U212021		S	STATE MATCH	\$460,000
	Total Federal Funds:			\$9,407,000
	Total:			\$9,867,000

**TABLE 1**  
**FISCAL YEAR 2026 FEDERALLY FUNDED PROJECTS CHEYENNE URBAN AREA**

<b>TOTAL FUNDS FOR 2026 FEDERALLY FUNDED PROJECTS</b>		
FEDERAL	TAP GRANT	\$630,000
FEDERAL	FEMA GRANT	\$256,250
FEDERAL	FTA 5307	\$4,249,791
FEDERAL	FTA 5339	\$95,986
FEDERAL	STP-BR	\$525,975
FEDERAL	STP-BROS	\$480,061
FEDERAL	STPU-CH	\$13,199,931
FEDERAL	STP	\$9,407,000
	<b>FEDERAL TOTAL</b>	<b>\$28,844,994</b>
STATE	SECTION IIIB	\$4,725
STATE	SECTION 5311	\$360,000
STATE	STATE MATCH	\$515,277
	<b>STATE TOTAL</b>	<b>\$880,002</b>
LOCAL	SALES TAX	\$2,255,630
LOCAL	MATCH TRAN	\$1,623,973
LOCAL	UNDETERMINED	\$821,314
	<b>LOCAL TOTAL</b>	<b>\$4,700,917</b>
	<b>TOTAL</b>	<b>\$34,425,913</b>

**TABLE 2**  
**FISCAL YEAR 2026 STATE & LOCALLY FUNDED PROJECTS CHEYENNE URBAN AREA**

<b>CITY</b>	<b>Pershing Blvd. at Windmill Road Intersection Improvements</b>		
	Performance Measure: Safety		
		L	SALES TAX
			\$1,250,000
	<b>Total Federal Funds:</b>		<b>\$0</b>
	<b>Total:</b>		<b>\$1,250,000</b>
<b>CITY</b>	<b>Miller Lane Construction - Townsend to Sunset, Sunset from Quincy to Kornegay</b>		
	Performance Measure: Safety		
		L	SALES TAX
			\$450,000
	<b>Total Federal Funds:</b>		<b>\$0</b>
	<b>Total:</b>		<b>\$450,000</b>
<b>CITY</b>	<b>Downtown Alley Enhancements (4)</b>		
	Performance Measure: Safety and Pavement		
		P	PRIVATE
			\$100,000
		U	UNDETERMINED
			\$500,000
	<b>Total Federal Funds:</b>		<b>\$0</b>
	<b>Total:</b>		<b>\$600,000</b>
<b>CITY</b>	<b>Belvoir Ranch Trail Phase 1 (Trails, Access, Parking); Phase 3</b>		
	Performance Measure: Safety		
		L	BELVOIR
			\$250,000
	<b>Total Federal Funds:</b>		<b>\$0</b>
	<b>Total:</b>		<b>\$250,000</b>
<b>CITY</b>	<b>Yellowstone and Dell Range Intersection Reconstruction</b>		
	Performance Measure: Safety		
		L	SALES TAX
			\$1,664,568
		L	SALES TAX
			\$1,835,432
	<b>Total Federal Funds:</b>		<b>\$0</b>
	<b>Total:</b>		<b>\$3,500,000</b>
<b>CITY</b>	<b>Christensen Road Greenway: Commerce Circle to Campstool Connector</b>		
	Performance Measure: Safety		
		L	SALES TAX
			\$450,000
	<b>Total Federal Funds:</b>		<b>\$0</b>
	<b>Total:</b>		<b>\$450,000</b>

**TABLE 2**  
**FISCAL YEAR 2026 STATE & LOCALLY FUNDED PROJECTS CHEYENNE URBAN AREA**

<b>CITY</b>	<b>Converse Ave Roundabout Operational Improvements</b>		
	Performance Measure: Safety		
		L	SALES TAX
			\$75,000
	<b>Total Federal Funds:</b>		<b>\$0</b>
	<b>Total:</b>		<b>\$75,000</b>
<b>CITY</b>	<b>DDA Curb and Gutter and Sidewalk Program</b>		
	Performance Measure: Safety		
		O	DDA
			\$70,000
		L	SALES TAX
			\$90,000
	<b>Total Federal Funds:</b>		<b>\$0</b>
	<b>Total:</b>		<b>\$160,000</b>
<b>CITY</b>	<b>Dell Range Blvd Reconstruction (College Dr to VanBuren Ave)</b>		
	Performance Measure: Safety		
		L	SALES TAX
			\$800,000
	<b>Total Federal Funds:</b>		<b>\$0</b>
	<b>Total:</b>		<b>\$800,000</b>
<b>CITY</b>	<b>Reed Avenue Rail Corridor: Design and Construction</b>		
	Performance Measure: Safety		
		L	SALES TAX
			\$840,000
	<b>Total Federal Funds:</b>		<b>\$0</b>
	<b>Total:</b>		<b>\$840,000</b>
<b>CITY</b>	<b>Converse Ave &amp; Dell Range Intersection Improvement and Structure Replacement Water and Sewer Improvements</b>		
	Performance Measure: Safety and Pavement		
		L	SALES TAX
			\$750,000
	<b>Total Federal Funds:</b>		<b>\$0</b>
	<b>Total:</b>		<b>\$750,000</b>
<b>CITY</b>	<b>Pavement Management City Mill and Overlays</b>		
	Performance Measure: Infrastructure Condition, Safety, System Reliability		
		L	SALES TAX
			\$2,000,000
		L	SALES TAX
			\$1,400,000
	<b>Total Federal Funds:</b>		<b>\$0</b>
	<b>Total:</b>		<b>\$3,400,000</b>

**TABLE 2**  
**FISCAL YEAR 2026 STATE & LOCALLY FUNDED PROJECTS CHEYENNE URBAN AREA**

<b>CITY</b>	<b>Pavement Management (Patch and Seal Maintenance Program)</b>		
	Performance Measure: Infrastructure Condition, Safety, System Reliability		
		L	SALES TAX
			\$2,500,000
	<b>Total Federal Funds:</b>		<b>\$0</b>
	<b>Total:</b>		<b>\$2,500,000</b>

<b>CITY</b>	<b>Pavement Management Crack Seal Maintenance Program</b>		
	Performance Measure: Infrastructure Condition, Safety, System Reliability		
		L	SALES TAX
			\$600,000
	<b>Total Federal Funds:</b>		<b>\$0</b>
	<b>Total:</b>		<b>\$600,000</b>

<b>CITY</b>	<b>Street Repair and Renovation and Misc Concrete: City wide</b>		
	Performance Measure: Infrastructure Condition, Safety, System Reliability		
		L	SALES TAX
			\$500,000
	<b>Total Federal Funds:</b>		<b>\$0</b>
	<b>Total:</b>		<b>\$500,000</b>

<b>CITY</b>	<b>Traffic Safety Improvements</b>		
	Performance Measure: Infrastructure Condition, Safety, System Reliability		
		L	SALES TAX
			\$500,000
	<b>Total Federal Funds:</b>		<b>\$0</b>
	<b>Total:</b>		<b>\$500,000</b>

<b>CITY</b>	<b>Stormwater Drainage Maintenance and Repair Projects: City Wide</b>		
	Performance Measure: Infrastructure Condition, Safety, System Reliability		
		L	SALES TAX
			\$250,000
	<b>Total Federal Funds:</b>		<b>\$0</b>
	<b>Total:</b>		<b>\$250,000</b>

<b>TOTAL FUNDS FOR 2026 STATE AND LOCALLY FUNDED PROJECTS</b>			
	<b>STATE</b>		<b>\$0</b>
	<b>STATE TOTAL</b>		<b>\$0</b>
	<b>LOCAL</b>	<b>SALES TAX</b>	<b>\$15,955,000</b>
	<b>LOCAL</b>	<b>PRIVATE</b>	<b>\$100,000</b>
	<b>LOCAL</b>	<b>UNDETERMINED</b>	<b>\$500,000</b>
	<b>LOCAL</b>	<b>BELVOIR</b>	<b>\$250,000</b>
	<b>LOCAL</b>	<b>DDA</b>	<b>\$70,000</b>
		<b>LOCAL TOTAL</b>	<b>\$16,875,000</b>
		<b>TOTAL</b>	<b>\$16,875,000</b>

**TABLE 3 FY 2026 - 2029 TIP PROJECT LISTING - Projects are organized by year and are not shown in order of priority**

MAP#	Agency	Project Description	Funding	2026	2027	2028	2029	4 Year TIP
12	CITY	<b>Pershing Blvd. at Windmill Road Intersection Improvements</b> Performance Measure: Safety						
		L	SALES TAX	\$1,250,000				\$1,250,000
		<b>Total Federal Funds:</b>		<b>\$0</b>				<b>\$0</b>
		<b>Total:</b>		<b>\$1,250,000</b>				<b>\$1,250,000</b>
19	CITY	<b>Miller Lane Construction - Townsend to Sunset, Sunset from Quincy to Kornegay</b> Performance Measure: Safety						
		L	SALES TAX	\$450,000				\$450,000
		<b>Total Federal Funds:</b>		<b>\$0</b>				<b>\$0</b>
		<b>Total:</b>		<b>\$450,000</b>				<b>\$450,000</b>
5	CITY	<b>Downtown Alley Enhancements (4)</b> (House-Warren 18th-19th)(21st-22nd Capital-Central)(16th-17th Central-Warren(16th-17th Central-Capital) Performance Measure: Safety and Pavement						
		P	PRIVATE	\$100,000				\$100,000
		U	UNDETERMINED	\$500,000				\$500,000
		<b>Total Federal Funds:</b>		<b>\$0</b>				<b>\$0</b>
		<b>Total:</b>		<b>\$600,000</b>				<b>\$600,000</b>
6	CITY	<b>Belvoir Ranch Trail Phase 1 (Trails, Access, Parking); Phase 3</b> Performance Measure: Safety						
		L	BELVOIR	\$250,000				\$250,000
		<b>Total Federal Funds:</b>		<b>\$0</b>				<b>\$0</b>
		<b>Total:</b>		<b>\$250,000</b>				<b>\$250,000</b>



**TABLE 3 FY 2026 - 2029 TIP PROJECT LISTING**

MAP#	Agency	Project Description	Funding	2026	2027	2028	2029	4 Year TIP
9	CITY	<b>Yellowstone and Dell Range Intersection Reconstruction</b> Performance Measure: Safety						
			L SALES TAX	\$1,664,568				\$1,664,568
			L SALES TAX	\$1,835,432				\$1,835,432
			<b>Total Federal Funds:</b>	<b>\$0</b>				<b>\$0</b>
			<b>Total:</b>	<b>\$3,500,000</b>				<b>\$3,500,000</b>
14	CITY	<b>DELL RANGE INTERSECTION WITH US 30 -</b> Whitney Rd from US 30 to and including intersection with Dell Range and Dell Range from Whitney east to new intersection with US 30. <b>WYDOT PROJECT STPU-CH-B231031</b> Performance Measure: Safety and Pavement						
			F STPU-CH	\$5,319,572				\$5,319,572
			L SALES TAX	\$2,066,428				\$2,066,428
			<b>Total Federal Funds:</b>	<b>\$5,319,572</b>				<b>\$5,319,572</b>
			<b>Total:</b>	<b>\$7,386,000</b>				<b>\$7,386,000</b>
38	CITY	<b>Christensen Road Greenway:</b> Commerce Circle to Campstool Connector Performance Measure: Safety						
			L SALES TAX	\$450,000				\$450,000
			<b>Total Federal Funds:</b>	<b>\$0</b>				<b>\$0</b>
			<b>Total:</b>	<b>\$450,000</b>				<b>\$450,000</b>
49	CITY	<b>Parsley Blvd Greenway Connector:</b> W. 3rd Ave south, across I80 bridge to connection at WAPA easement Performance Measure: Safety						
			F TAP GRANT	\$240,000				\$240,000
			L SALES TAX	\$60,000				\$60,000
			<b>Total Federal Funds:</b>	<b>\$240,000</b>				<b>\$240,000</b>
			<b>Total:</b>	<b>\$300,000</b>				<b>\$300,000</b>

**TABLE 3 FY 2026 - 2029 TIP PROJECT LISTING**

MAP#	Agency	Project Description	Funding	2026	2027	2028	2029	4 Year TIP
6	CITY	Converse Ave Roundabout Operational Improvements Performance Measure: Safety						
			L SALES TAX	\$75,000	\$500,000			\$575,000
			Total Federal Funds:	\$0	\$0			\$0
			Total:	\$75,000	\$500,000			\$575,000
11	CITY	DDA Curb and Gutter and Sidewalk Program Performance Measure: Safety						
			P PRIVATE - DDA	\$70,000	\$70,000			\$140,000
			L SALES TAX	\$90,000				\$90,000
			Total Federal Funds:	\$0	\$0			\$0
			Total:	\$160,000	\$70,000			\$230,000
4	CITY	Dell Range Blvd Reconstruction (College Dr to VanBuren Ave) Performance Measure: Safety						
			L SALES TAX	\$800,000	\$6,000,000			\$6,800,000
			P PRIVATE		\$600,000			\$600,000
			Total Federal Funds:	\$0	\$0			\$0
			Total:	\$800,000	\$6,600,000			\$7,400,000
28	CITY	18th St Reconstruction (Reed Ave to House Ave) Design and Construction Performance Measure: Safety						
			F FEMA GRANT	\$125,000				\$125,000
			L SALES TAX	\$25,000	\$750,000			\$775,000
			U UNDETERMINED			\$6,000,000		\$6,000,000
			Total Federal Funds:	\$125,000	\$0	\$0		\$125,000
			Total:	\$150,000	\$750,000	\$6,000,000		\$6,900,000

**TABLE 3 FY 2026 - 2029 TIP PROJECT LISTING**

MAP#	Agency	Project Description	Funding	2026	2027	2028	2029	4 Year TIP
3	CITY	19th St and Missile Intersection Realignment Performance Measure: Safety						
			L SALES TAX		\$250,000			\$250,000
			U UNDETERMINED		\$5,000,000			\$5,000,000
			Total Federal Funds:		\$0			\$0
			Total:		\$5,250,000			\$5,250,000
50	CITY	Cribbon Ave. Greenway Connector: From WAPA easement south to W Allison Rd, adjacent to Johnson Junior High Performance Measure: Safety						
			F TAP GRANT		\$240,000			\$240,000
			L SALES TAX		\$60,000			\$60,000
			Total Federal Funds:		\$240,000			\$240,000
			Total:		\$300,000			\$300,000
16	CITY	Dry Creek In-line Detention LCSD #1 Channel improvements, in-line detention in Dry Creek between McCormick and Central. Performance Measure: Environment Sustainability						
			L SALES TAX		\$350,000			\$350,000
			Total Federal Funds:		\$0			\$0
			Total:		\$350,000			\$350,000
23	CITY	7th Street Rehabilitation Performance Measure: Safety and Pavement						
			U UNDETERMINED		\$900,000			\$900,000
			Total Federal Funds:		\$0			\$0
			Total:		\$900,000			\$900,000

**TABLE 3 FY 2026 - 2029 TIP PROJECT LISTING**

MAP#	Agency	Project Description	Funding	2026	2027	2028	2029	4 Year TIP
24	CITY	York Extension Harmony Valley (Public/ Private Partnership) Performance Measure: Safety and Pavement						
			U UNDETERMINED		\$600,000			\$600,000
			P PRIVATE		\$300,000			\$300,000
			Total Federal Funds:		\$0			\$0
			Total:		\$900,000			\$900,000
13	CITY	Fox Farm & Walterscheid Intersection Improvements: Design & Reconstruction with traffic control. Performance Measure: Safety						
			L SALES TAX		\$225,000	\$1,500,000		\$1,725,000
			Total Federal Funds:		\$0	\$0		\$0
			Total:		\$225,000	\$1,500,000		\$1,725,000
17	CITY	Majorn Court (Public/ Private Partnership) Performance Measure: Safety and Pavement						
			L UNDETERMINED			\$900,000		\$900,000
			P PRIVATE			\$900,000		\$900,000
			Total Federal Funds:			\$0		\$0
			Total:			\$1,800,000		\$1,800,000
36	CITY	South Park Subdivision at Walterscheid Greenway Connector: W. 3rd to W 4th Street Performance Measure: Safety						
			F TAP GRANT			\$240,000		\$240,000
			L SALES TAX			\$60,000		\$60,000
			Total Federal Funds:			\$240,000		\$240,000
			Total:			\$60,000		\$60,000

**TABLE 3 FY 2026 - 2029 TIP PROJECT LISTING**

MAP#	Agency	Project Description	Funding	2026	2027	2028	2029	4 Year TIP
18	CITY	<b>Gregg Way (Public/ Private Partnership)</b> Performance Measure: Safety and Pavement						
			L	UNDETERMINED				
			P	PRIVATE				
			<b>Total Federal Funds:</b>					
			<b>Total:</b>					
							\$350,000	\$350,000
							\$350,000	\$350,000
							\$0	\$0
							\$700,000	\$700,000
30	CITY	<b>UPRR Culvert Upgrade Design: Dry Creek</b> Performance Measure: Safety						
			U	UNDETERMINED				
			<b>Total Federal Funds:</b>					
			<b>Total:</b>					
							\$11,200,000	\$11,200,000
							\$0	\$0
							\$11,200,000	\$11,200,000
8	CITY	<b>Reed Avenue Rail Corridor: Design and Construction</b> Performance Measure: Safety						
			L	SALES TAX	\$840,000			
			U	UNDETERMINED		\$4,000,000	\$4,500,000	\$4,500,000
			<b>Total Federal Funds:</b>		\$0	\$0	\$0	\$0
			<b>Total:</b>		\$840,000	\$4,000,000	\$4,500,000	\$13,840,000
								\$840,000
						\$4,000,000	\$4,500,000	\$13,000,000
					\$0	\$0	\$0	\$0
					\$840,000	\$4,000,000	\$4,500,000	\$13,840,000
7	CITY	<b>Duff Avenue Stormwater Enhancements: From Pershing to E 22nd St Design and Construction</b> Performance Measure: Environmental Sustainability						
			F	FEMA GRANT				
			U	UNDETERMINED				
			<b>Total Federal Funds:</b>					
			<b>Total:</b>					
								\$0
						\$1,210,000	\$8,044,000	\$9,254,000
						\$0	\$0	\$0
						\$1,210,000	\$8,044,000	\$9,254,000

**TABLE 3 FY 2026 - 2029 TIP PROJECT LISTING**

MAP#	Agency	Project Description	Funding	2026	2027	2028	2029	4 Year TIP
31	CITY	<b>Clear Creek In-Line Regional Stormwater Detention Facility Design and Construction</b> Performance Measure: Environmental Sustainability						
			F FEMA GRANT	\$131,250				\$131,250
			L SALES TAX	\$43,750		\$1,500,000		\$1,543,750
			<b>Total Federal Funds:</b>	<b>\$131,250</b>		<b>\$0</b>		<b>\$131,250</b>
			<b>Total:</b>	<b>\$175,000</b>		<b>\$1,500,000</b>		<b>\$1,675,000</b>
10	CITY	<b>Converse Ave &amp; Dell Range Intersection Improvement and Structure Replacement Water and Sewer Improvements</b> Performance Measure: Safety and Pavement						
			L SALES TAX	\$750,000				\$750,000
			U UNDETERMINED		\$5,000,000	\$4,500,000	\$4,500,000	\$14,000,000
			U UNDETERMINED			\$825,000	\$825,000	\$1,650,000
			<b>Total Federal Funds:</b>	<b>\$0</b>	<b>\$0</b>	<b>\$0</b>	<b>\$0</b>	<b>\$0</b>
			<b>Total:</b>	<b>\$750,000</b>	<b>\$5,000,000</b>	<b>\$5,325,000</b>	<b>\$5,325,000</b>	<b>\$16,400,000</b>
26	CITY	<b>US 30/ Charles Street Detention Pond</b> Performance Measure: Safety						
			L SALES TAX		\$100,000	\$500,000		\$600,000
			<b>Total Federal Funds:</b>		<b>\$0</b>	<b>\$0</b>		<b>\$0</b>
			<b>Total:</b>		<b>\$100,000</b>	<b>\$500,000</b>		<b>\$600,000</b>
27	CITY	<b>Charles Street Storm Interceptor</b> Performance Measure: Safety						
			L SALES TAX			\$750,000		\$750,000
			<b>Total Federal Funds:</b>			<b>\$0</b>		<b>\$0</b>
			<b>Total:</b>			<b>\$750,000</b>		<b>\$750,000</b>

**TABLE 3 FY 2026 - 2029 TIP PROJECT LISTING**

MAP#	Agency	Project Description	Funding	2026	2027	2028	2029	4 Year TIP
21	CITY	Belvoir Ranch Phase 4 (Bridge, Repurposed Structural Plate Pipe, Trail)						
		Performance Measure: Safety						
		L	BELVOIR					\$0
		U	UNDETERMINED				\$4,000,000	\$4,000,000
		Total Federal Funds:					\$0	\$0
Total:					\$4,000,000	\$4,000,000		
37	CITY	Sun Valley Open Space to Kiwanis Park Greenway Connector: Approx. 2.2 mile Greenway Connection from Sun Valley trailhead east of College Dr. into Kiwanis Community Park						
		Performance Measure: Safety						
		F	TAP GRANT				\$1,000,000	\$1,000,000
		L	SALES TAX				\$2,000,000	\$2,000,000
		Total Federal Funds:					\$1,000,000	\$1,000,000
Total:					\$3,000,000	\$3,000,000		
	CITY	Pavement Management City Mill and Overlays						
		Performance Measure: Infrastructure Condition, Safety, System Reliability						
		L	SALES TAX	\$2,000,000	\$2,120,000	\$2,250,000	\$2,390,000	\$8,760,000
		L	SALES TAX	\$1,400,000				\$1,400,000
		Total Federal Funds:		\$0	\$0	\$0	\$0	\$0
Total:		\$3,400,000	\$2,120,000	\$2,250,000	\$2,390,000	\$10,160,000		
	CITY	Pavement Management (Patch and Seal Maintenance Program)						
		Performance Measure: Infrastructure Condition, Safety, System Reliability						
		L	SALES TAX	\$2,500,000	\$2,650,000	\$2,810,000	\$2,980,000	\$10,940,000
		Total Federal Funds:		\$0	\$0	\$0	\$0	\$0
Total:		\$2,500,000	\$2,650,000	\$2,810,000	\$2,980,000	\$10,940,000		

**TABLE 3 FY 2026 - 2029 TIP PROJECT LISTING**

MAP#	Agency	Project Description	Funding	2026	2027	2028	2029	4 Year TIP
	CITY	<b>Pavement Management Crack Seal Maintenance Program</b>						
		Performance Measure: Infrastructure Condition, Safety, System Reliability						
			L SALES TAX	\$600,000	\$640,000	\$680,000	\$730,000	<b>\$2,650,000</b>
		<b>Total Federal Funds:</b>		<b>\$0</b>	<b>\$0</b>	<b>\$0</b>	<b>\$0</b>	<b>\$0</b>
		<b>Total:</b>		<b>\$600,000</b>	<b>\$640,000</b>	<b>\$680,000</b>	<b>\$730,000</b>	<b>\$2,650,000</b>
	CITY	<b>Street Repair and Renovation and Misc Concrete: City wide</b>						
		Performance Measure: Infrastructure Condition, Safety, System Reliability						
			L SALES TAX	\$500,000	\$530,000	\$570,000	\$610,000	<b>\$2,210,000</b>
		<b>Total Federal Funds:</b>		<b>\$0</b>	<b>\$0</b>	<b>\$0</b>	<b>\$0</b>	<b>\$0</b>
		<b>Total:</b>		<b>\$500,000</b>	<b>\$530,000</b>	<b>\$570,000</b>	<b>\$610,000</b>	<b>\$2,210,000</b>
	CITY	<b>Traffic Safety Improvements</b>						
		Performance Measure: Infrastructure Condition, Safety, System Reliability						
			L SALES TAX	\$500,000	\$530,000	\$570,000	\$610,000	<b>\$2,210,000</b>
		<b>Total Federal Funds:</b>		<b>\$0</b>	<b>\$0</b>	<b>\$0</b>	<b>\$0</b>	<b>\$0</b>
		<b>Total:</b>		<b>\$500,000</b>	<b>\$530,000</b>	<b>\$570,000</b>	<b>\$610,000</b>	<b>\$2,210,000</b>
	CITY	<b>Stormwater Drainage Maintenance and Repair Projects: City Wide</b>						
		Performance Measure: Infrastructure Condition, Safety, System Reliability						
			L SALES TAX	\$250,000	\$270,000	\$290,000	\$310,000	<b>\$1,120,000</b>
		<b>Total Federal Funds:</b>		<b>\$0</b>	<b>\$0</b>	<b>\$0</b>	<b>\$0</b>	<b>\$0</b>
		<b>Total:</b>		<b>\$250,000</b>	<b>\$270,000</b>	<b>\$290,000</b>	<b>\$310,000</b>	<b>\$1,120,000</b>



**TABLE 3 FY 2026 - 2029 TIP PROJECT LISTING**

MAP#	Agency	Project Description	Funding	2026	2027	2028	2029	4 Year TIP
<b>CITY TOTALS</b>				<b>2026</b>	<b>2027</b>	<b>2028</b>	<b>2029</b>	<b>4 Year TIP</b>
		Total Federal Funds:		\$5,815,822	\$240,000	\$240,000	\$1,000,000	\$7,295,822
		Total State Funds:		\$0	\$0	\$0	\$0	\$0
		Total Undetermined Funds:		\$500,000	\$15,500,000	\$17,935,000	\$33,419,000	\$67,354,000
		Total Private Funds:		\$170,000	\$970,000	\$900,000	\$350,000	\$2,390,000
		Total Local Funds:		\$18,400,178	\$14,975,000	\$11,480,000	\$9,630,000	\$54,485,178
		Total:		\$24,886,000	\$31,685,000	\$30,555,000	\$44,399,000	\$131,525,000

**TABLE 3 FY 2026 - 2029 TIP PROJECT LISTING**

Agency	Project Description	Funding Source		2026	2027	2028	2029	4 Year TIP
TRANSIT	Transit Buses Purchase							
	Performance Measure: Transit	F	FTA 5307	\$636,559	\$655,656	\$675,325	\$695,585	\$2,663,125
		L	MATCHTRAN	\$71,119	\$90,000	\$92,700	\$95,481	\$349,300
	Total Federal Funds:			\$636,559	\$655,656	\$675,325	\$695,585	\$2,663,125
	Total:			\$707,678	\$745,656	\$768,025	\$791,066	\$3,012,425
AMENDMENT FOR AMOUNTS								
TRANSIT	RENOVATIONS Westland Rd Building							
	Performance Measure: Transit	F	FTA 5339	\$3,314,880				\$3,314,880
		F	FTA 5307	\$0				\$0
		L	MATCHTRAN	\$828,719				\$828,719
	Total Federal Funds:			\$3,314,880				\$3,314,880
Total:			\$4,143,599				\$4,143,599	
AMENDMENT FOR AMOUNTS								
TRANSIT	GENERAL OPERATING ASSISTANCE & CAPITAL							
		F	FTA 5307	\$2,028,615	\$1,941,274	\$2,000,000	\$2,100,000	\$8,069,889
		S	Section IIIB	\$3,922	\$3,922	\$3,922	\$3,922	\$15,688
		S	Section 5311	\$300,000	\$300,000	\$300,000	\$300,000	\$1,200,000
		L	MATCHTRAN	\$940,274	\$925,230	\$935,000	\$960,000	\$3,760,504
Total Federal Funds:			\$2,028,615	\$1,941,274	\$2,000,000	\$2,100,000	\$8,069,889	
Total:			\$3,272,811	\$3,170,426	\$3,238,922	\$3,363,922	\$13,046,081	
TRANSIT TOTALS				2026	2027	2028	2029	4 Year TIP
Total Federal Funds:				\$5,980,054	\$2,596,930	\$2,675,325	\$2,795,585	\$14,047,894
Total State Funds:				\$303,922	\$303,922	\$303,922	\$303,922	\$1,215,688
Total Local Funds:				\$1,840,112	\$1,015,230	\$1,027,700	\$1,055,481	\$4,938,523
Total:				\$8,124,088	\$3,916,082	\$4,006,947	\$4,154,988	\$20,202,105

**TABLE 3 FY 2026 - 2029 TIP PROJECT LISTING**

MAP#	Agency	Project Description	Funding Source	2026	2027	2028	2029	4 Year TIP
14	COUNTY	DELL RANGE INTERSECTION WITH US 30 - Whitney Rd from US 30 to and including intersection with Dell Range and Dell Range from Whitney east to new intersection with US 30. WYDOT PROJECT STPU-CH-B221004						
		Performance Measure: Safety						
		F	STPU-CH	\$7,880,359				\$7,880,359
		L	COUNTY	\$821,314				\$821,314
		Total Federal Funds:		\$7,880,359				\$7,880,359
Total:			\$8,701,673				\$8,701,673	
53	COUNTY	East Jefferson Rd Reconstruction – Reconstruct E. Jefferson Rd between South Greeley Hwy and Ave C						
		Performance Measure: Safety						
		L	SALES TAX		\$1,860,494			\$1,860,494
		Total Federal Funds:			\$0			\$0
Total:			\$1,860,494			\$1,860,494		
55	COUNTY	Division Ave and Wallick Rd Street and infrastructure upgrade – Construct Division Avenue between College Drive and Wallick Road and reconstruct Wallick Road between Division Avenue and US85/S. Greeley Highway						
		Performance Measure: Safety						
		F	STPU				\$8,144,000	\$8,144,000
		L	SALES TAX	\$500,000	\$1,000,000	\$1,545,340		\$3,045,340
		Total Federal Funds:		\$0	\$0	\$0	\$8,144,000	\$8,144,000
Total:			\$500,000	\$1,000,000	\$1,545,340	\$8,144,000	\$11,189,340	

**TABLE 3 FY 2026 - 2029 TIP PROJECT LISTING**

MAP#	Agency	Project Description	Funding Source	2026	2027	2028	2029	4 Year TIP
54	COUNTY	<b>East Allison Rd Reconstruction</b> – Reconstruct E. Allison Rd between South Greeley Highway and Avenue C Performance Measure: Safety						
			L SALES TAX		\$2,435,340			\$2,435,340
		<b>Total Federal Funds:</b>			\$0			\$0
		<b>Total:</b>			\$2,435,340			\$2,435,340

COUNTY TOTALS				2026	2027	2028	2029	4 Year TIP
		<b>Total Federal Funds:</b>		\$7,880,359	\$0	\$0	\$8,144,000	\$16,024,359
		<b>Total State Funds:</b>		\$0	\$0	\$0	\$0	\$0
		<b>Total Local Funds:</b>		\$1,321,314	\$5,295,834	\$1,545,340	\$0	\$8,162,488
		<b>Total:</b>		\$9,201,673	\$5,295,834	\$1,545,340	\$8,144,000	\$24,186,847

**TABLE 3 FY 2026 - 2029 TIP PROJECT LISTING**

MAP#	Agency	Project Description	Funding Source	2026	2027	2028	2029	4 Year TIP
39	WYDOT STP_BR B261030	<b>Transportation District 1 I-25 Structure No AAO, AAN, mm 8.44 - Structure Repair</b>						
		Performance Measure: Bridge	F	STP-BR	\$525,975			\$525,975
			S	State Match	\$55,277			\$55,277
		<b>Total Federal Funds:</b>			<b>\$525,975</b>			<b>\$525,975</b>
		<b>Total:</b>			<b>\$581,252</b>			<b>\$581,252</b>
29	WYDOT STP-BROS CN02110	<b>Remove Structure on CN210 Pershing Bridge mm 8.21</b>						
		Performance Measure: Bridge	F	STP-BROS	\$480,061			\$480,061
			L	SALES TAX	\$50,452			\$50,452
		<b>Total Federal Funds:</b>			<b>\$480,061</b>			<b>\$480,061</b>
		<b>Total:</b>			<b>\$530,513</b>			<b>\$530,513</b>
14	WYDOT STPU-CH B221004	<b>DELL RANGE INTERSECTION WITH US 30 - Whitney Rd from US 30 to and including intersection with Dell Range and Dell Range from Whitney east to new intersection with US 30. (LARAMIE COUNTY)</b>						
		Performance Measure: Pavement	F	STPU-CH	\$7,880,359			\$7,880,359
			L	COUNTY	\$821,314			\$821,314
		<b>Total Federal Funds:</b>			<b>\$7,880,359</b>			<b>\$7,880,359</b>
		<b>Total:</b>			<b>\$8,701,673</b>			<b>\$8,701,673</b>
14	WYDOT STPU-CH B231031	<b>DELL RANGE INTERSECTION WITH US 30 - Whitney Rd from US 30 to and including intersection with Dell Range and Dell Range from Whitney east to new intersection with US 30. (CITY OF CHEYENNE)</b>						
		Performance Measure: Pavement	F	STPU-CH	\$5,319,572			\$5,319,572
			L	SALES TAX	\$2,066,428			\$2,066,428
		<b>Total Federal Funds:</b>			<b>\$5,319,572</b>			<b>\$5,319,572</b>
		<b>Total:</b>			<b>\$7,386,000</b>			<b>\$7,386,000</b>
46	WYDOT STP U212021	<b>College Drive/Fox Farm-Campstool Way/Wy 212 Structure No. DBV, DBW, DBX mm 5.42-6 Pavement Rehab</b>						
		Performance Measure: Bridge	F	STP	\$9,407,000			\$9,407,000
			S	STATE MATCH	\$460,000			\$460,000
		<b>Total Federal Funds:</b>			<b>\$9,407,000</b>			<b>\$9,407,000</b>
		<b>Total:</b>			<b>\$9,867,000</b>			<b>\$9,867,000</b>

**TABLE 3 FY 2026 - 2029 TIP PROJECT LISTING**

MAP#	Agency	Project Description	Funding Source	2026	2027	2028	2029	4 Year TIP
45	WYDOT NHF I180024	<b>Central Ave/Pershing - 22nd St/I-180 mm 10.16-10.7 Pavement Rehab to include mill, overlay, ADA, Traffic Signal</b>						
		Performance Measure: Pavement	F	NHF		\$2,457,000		\$2,457,000
			S	STATE MATCH		\$258,000		\$258,000
		<b>Total Federal Funds:</b>				<b>\$2,457,000</b>		<b>\$2,457,000</b>
		<b>Total:</b>				<b>\$2,715,000</b>		<b>\$2,715,000</b>
48	WYDOT NHPPI I806214	<b>I80 Otto Road Section Eastbound Lane/I80 mm 348.36 - 357.68 Pavement Rehab to include mill, overlay, wearing course</b>						
		Performance Measure: Pavement	F	NHPPI		\$8,457,000		\$8,457,000
			S	STATE MATCH		\$670,000		\$670,000
		<b>Total Federal Funds:</b>				<b>\$8,457,000</b>		<b>\$8,457,000</b>
		<b>Total:</b>				<b>\$9,127,000</b>		<b>\$9,127,000</b>
41	WYDOT CRISI I806219	<b>Cheyenne to Laramie I-80 Structure No AYK, AYJ mm 346.4 - Bridge Replacement</b>						
		Performance Measure: Bridge	F	CRISI		\$12,941,000		\$12,941,000
			S	STATE MATCH		\$4,548,000		\$4,548,000
		<b>Total Federal Funds:</b>				<b>\$12,941,000</b>		<b>\$12,941,000</b>
		<b>Total:</b>				<b>\$17,489,000</b>		<b>\$17,489,000</b>
42	WYDOT STP B281009	<b>Cheyenne US 85 &amp; Yellowstone mm 17.29-18.1 - Modify Intersection to include intersection realignment</b>						
		Performance Measure: Safety	F	STP		\$729,000		\$729,000
			S	STATE MATCH		\$87,000		\$87,000
		<b>Total Federal Funds:</b>				<b>\$729,000</b>		<b>\$729,000</b>
		<b>Total:</b>				<b>\$816,000</b>		<b>\$816,000</b>
43	WYDOT NHPPI I806215	<b>Laramie to Cheyenne Otto Rd Section/Westbound Lane I-80 mm 348.36-357.68 - Pavement Rehab mill, overlay, and wearing course</b>						
		Performance Measure: Pavement	F	NHPPI		\$8,850,000		\$8,850,000
			S	STATE MATCH		\$701,000		\$701,000
		<b>Total Federal Funds:</b>				<b>\$8,850,000</b>		<b>\$8,850,000</b>
		<b>Total:</b>				<b>\$9,551,000</b>		<b>\$9,551,000</b>
35	WYDOT STP 107029	<b>Cheyenne Happy Jack Rd WY210 mm 0.02-10.29 - Pavement Rehab to include concrete curb, gutter, repair, mill, overaly, chip seal</b>						
		Performance Measure: Pavement	F	STP			\$10,151,000	\$10,151,000
			S	STATE MATCH			\$1,067,000	\$1,067,000
		<b>Total Federal Funds:</b>					<b>\$10,151,000</b>	<b>\$10,151,000</b>
		<b>Total:</b>					<b>\$11,218,000</b>	<b>\$11,218,000</b>

**TABLE 3 FY 2026 - 2029 TIP PROJECT LISTING**

MAP#	Agency	Project Description	Funding Source		2026	2027	2028	2029	4 Year TIP	
33	WYDOT NHPP N852006	Cheyenne to Torrington Lodgepole US 85 mm 17.29-27.30 - Pavement Rehab to Include mill, overlay and chip seal								
		Performance Measure: Pavement		F	NHPP				\$9,379,000	\$9,379,000
				S	STATE MATCH				\$996,000	\$996,000
		Total Federal Funds:							\$9,379,000	\$9,379,000
		Total:							\$10,375,000	\$10,375,000
WYDOT TOTALS					2026	2027	2028	2029	4 Year TIP	
Total Federal Funds:					\$23,612,967	\$23,855,000	\$9,579,000	\$19,530,000	\$76,576,967	
Total State Funds:					\$515,277	\$5,476,000	\$788,000	\$2,063,000	\$8,842,277	
Total Local Funds:					\$2,938,194	\$0	\$0	\$0	\$2,938,194	
Total:					\$27,066,438	\$29,331,000	\$10,367,000	\$21,593,000	\$88,357,438	

**TABLE 4**  
**ESTIMATE OF AVAILABLE FUNDS FOR FY 2026-2029**  
**TRANSPORTATION PROJECTS**  
Appendix A explains abbreviations used in the Funding Source.

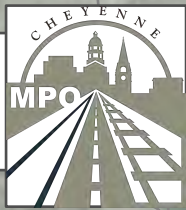
<b>FUNDING CATEGORY</b>	<b>FY 2026</b>	<b>FY 2027</b>	<b>FY 2028</b>	<b>FY 2029</b>	<b>TOTAL</b>
<b>FEDERAL</b>					
STPU-CH	\$13,199,931	\$0	\$0	\$0	<b>\$13,199,931</b>
TAP GRANT	\$240,000	\$240,000	\$240,000	\$1,000,000	<b>\$1,720,000</b>
FEMA GRANT	\$256,250	\$0	\$0	\$0	<b>\$256,250</b>
FTA 5307	\$4,249,791	\$1,798,867	\$1,854,677	\$1,874,937	<b>\$9,778,272</b>
FTA 5339	\$95,986	\$0	\$0	\$0	<b>\$95,986</b>
STPU	\$0	\$0	\$0	\$8,144,000	<b>\$8,144,000</b>
STP-BR	\$525,975	\$0	\$0	\$0	<b>\$525,975</b>
STP-BROS	\$480,061	\$0	\$0	\$0	<b>\$480,061</b>
STP	\$9,407,000	\$0	\$729,000	\$10,151,000	<b>\$20,287,000</b>
NHF	\$0	\$2,457,000	\$0	\$0	<b>\$2,457,000</b>
NHPPI	\$0	\$8,457,000	\$8,850,000	\$9,379,000	<b>\$26,686,000</b>
CRISI	\$0	\$12,941,000	\$0	\$0	<b>\$12,941,000</b>
<b>TOTAL FEDERAL FUNDS</b>	<b>\$28,454,994</b>	<b>\$25,893,867</b>	<b>\$11,673,677</b>	<b>\$30,548,937</b>	<b>\$96,571,475</b>
<b>STATE</b>					
Section 5311	\$360,000	\$360,000	\$360,000	\$360,000	<b>\$1,440,000</b>
Section IIIB	\$4,725	\$4,725	\$4,725	\$4,725	<b>\$18,900</b>
State Match	\$515,277	\$5,476,000	\$788,000	\$2,063,000	<b>\$8,842,277</b>
<b>TOTAL STATE FUNDS</b>	<b>\$880,002</b>	<b>\$5,840,725</b>	<b>\$1,152,725</b>	<b>\$2,427,725</b>	<b>\$10,301,177</b>
<b>LOCAL</b>					
Sales Tax	\$18,650,178	\$17,835,494	\$13,025,340	\$9,630,000	<b>\$59,141,012</b>
Belvoir	\$250,000	\$0	\$0	\$0	<b>\$250,000</b>
MatchTran	\$1,623,973	\$1,033,211	\$1,072,052	\$1,110,974	<b>\$4,840,210</b>
County	\$821,314	\$0	\$0	\$0	<b>\$821,314</b>
Private Funding	\$170,000	\$970,000	\$900,000	\$350,000	<b>\$2,390,000</b>
Undetermined Funding	\$500,000	\$15,500,000	\$17,935,000	\$33,419,000	<b>\$67,354,000</b>
<b>TOTAL LOCAL FUNDS</b>	<b>\$21,945,465</b>	<b>\$35,268,705</b>	<b>\$32,932,392</b>	<b>\$44,509,974</b>	<b>\$134,656,535</b>
<b>YEAR</b>	<b>FY 2026</b>	<b>FY 2027</b>	<b>FY 2028</b>	<b>FY 2029</b>	<b>TOTAL</b>
<b>TOTAL FEDERAL FUNDS</b>	\$28,454,994	\$25,893,867	\$11,673,677	\$30,548,937	<b>\$96,571,475</b>
<b>TOTAL STATE FUNDS</b>	\$880,002	\$5,840,725	\$1,152,725	\$2,427,725	<b>\$10,301,177</b>
<b>TOTAL LOCAL FUNDS</b>	\$22,015,465	\$35,338,705	\$32,932,392	\$44,509,974	<b>\$134,796,535</b>
<b>GRAND TOTAL</b>	<b>\$51,350,461</b>	<b>\$67,073,297</b>	<b>\$45,758,794</b>	<b>\$77,486,636</b>	<b>\$241,669,187</b>



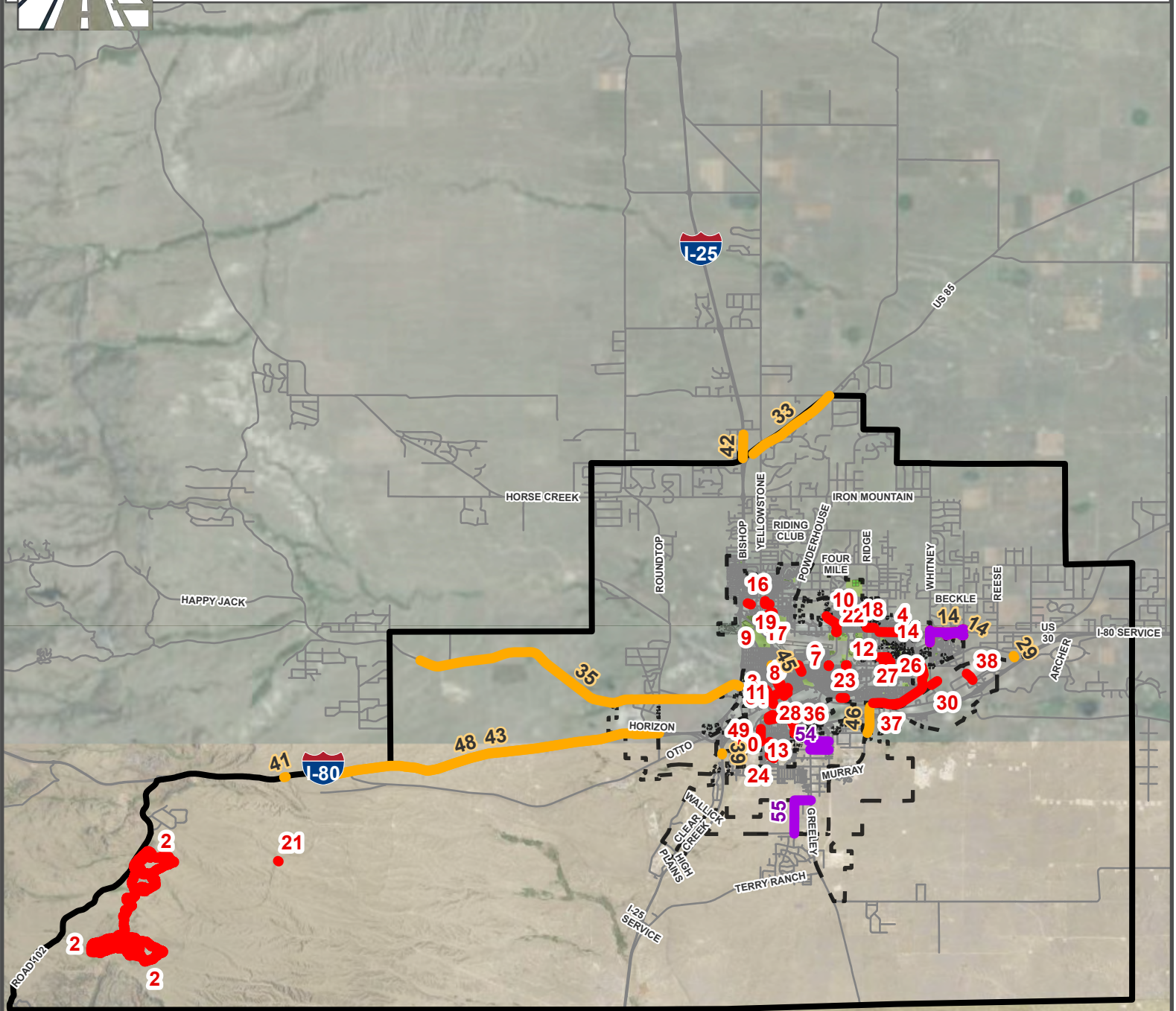
## Appendix A – Funding Definitions

Federal	CSA	Context Sensitive Amenity
Federal	EDA	Economic Development Administration
Federal	FAA	Federal Aviation Administration
Federal	FTA	Federal Transit Administration
Federal	FEMA	Federal Emergency Management Agency
Federal	HIP	Highway Infrastructure Program (OMNIBUS)
Federal	HSIP	Highway Safety Improvement Program
Federal	MPO	Metropolitan Planning Organization
Federal	NHF	National Highway Freight Program
Federal	NHPP	National Highway Performance Program
Federal	RHC	Rail Highway Crossings Rail
Federal	RHC -P	Rail Highway Crossings Rail-Protective Devices
Federal	SRTS	Safe Routes to School
Federal	STP	Surface Transportation Program
Federal	STP-BR	Surface Transportation Program – Bridge Replacement and Rehabilitation
Federal	STP-BROS	Surface Transportation Program – Bridge Replacement and Rehabilitation – Off System
Federal	STP-PM	Surface Transportation Program – Pavement Maintenance
Federal	STP-U	Surface Transportation Program – Urban
Federal	TAP	Transportation Alternatives Program
Non-Federal	Airport	Airport Board
Non-Federal	City	City Funds
Non-Federal	City Gen	City General Fund Account
Non-Federal	CMP	Contract Maintenance Program
Non-Federal	CRF	County Road Fund
Non-Federal	MATCHTRANS	Local Transit Matching Funds
Non-Federal	Private	Private Funds
Non-Federal	SCP-TC	State Construction Project – Ten Cent Fuel Tax Project
Non-Federal	Section IIIB	State Transit Funding
Non-Federal	Section 5311	State Transit Funding
Non-Federal	Slib	State Loan and Investment Board
Non-Federal	SMatchAir	State Matching Funds – Airport Projects
Non-Federal	State Match	State Matching Funds – Highway Projects
Non-Federal	WBC	Wyoming Business Council

## Appendix B - Maps



# 2026-2029 Transportation Improvement Program



## Legend

- City of Cheyenne Boundary
- MPO Planning Boundary 2024
- WYDOT TIP 2026-2029
- City of Cheyenne TIP 2026-2029
- Laramie County TIP 2026-2029

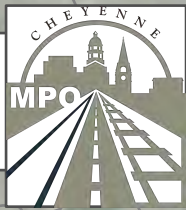
This map/data is made possible through the Cheyenne and Laramie County Cooperative GIS (CLCCGIS) Program and is for display purposes only. The CLCCGIS invokes its sovereign and governmental immunity in allowing access to or use of this data, makes no warranties as to the validity, and assumes no liability associated with the use or misuse of this information.



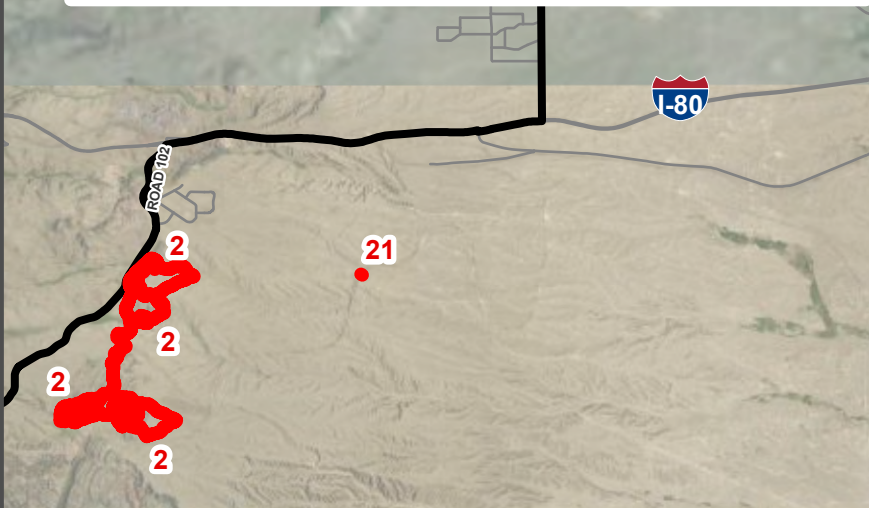
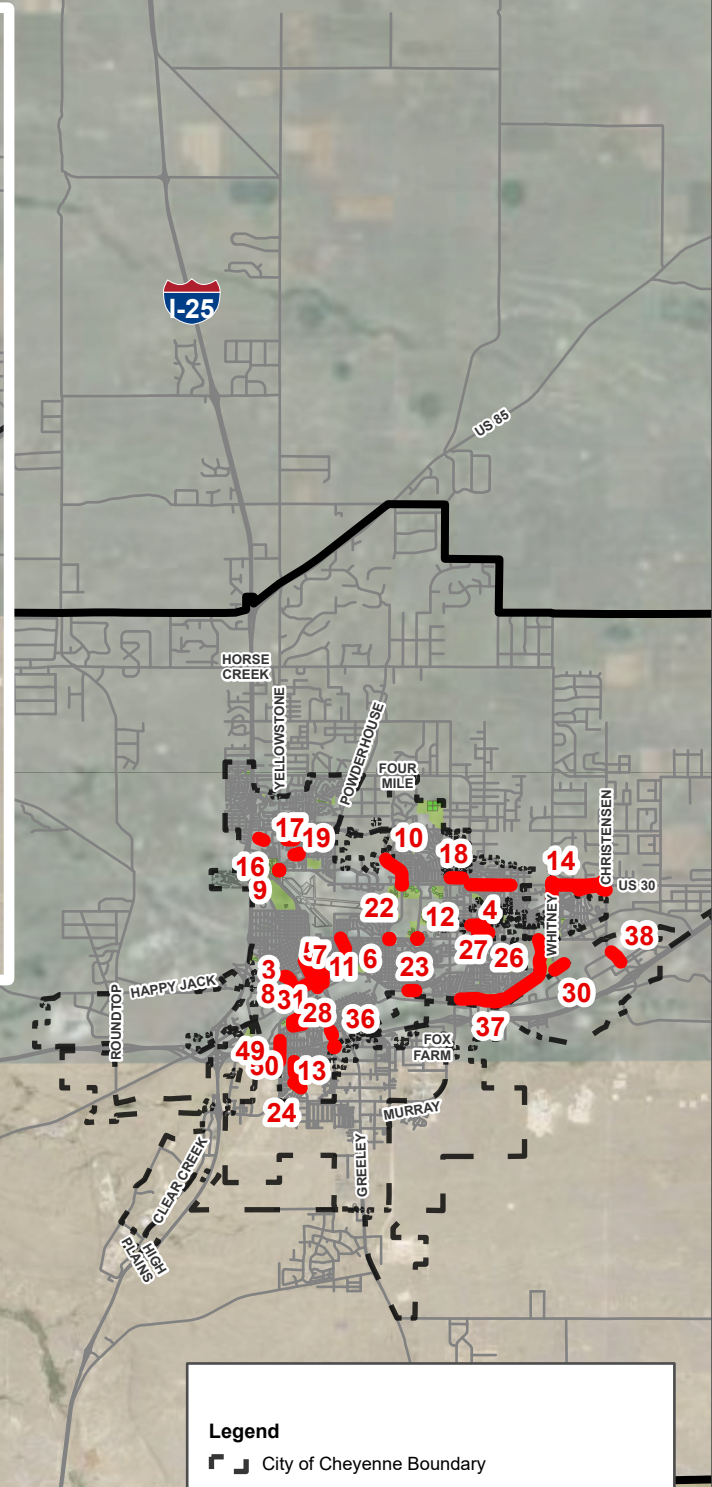
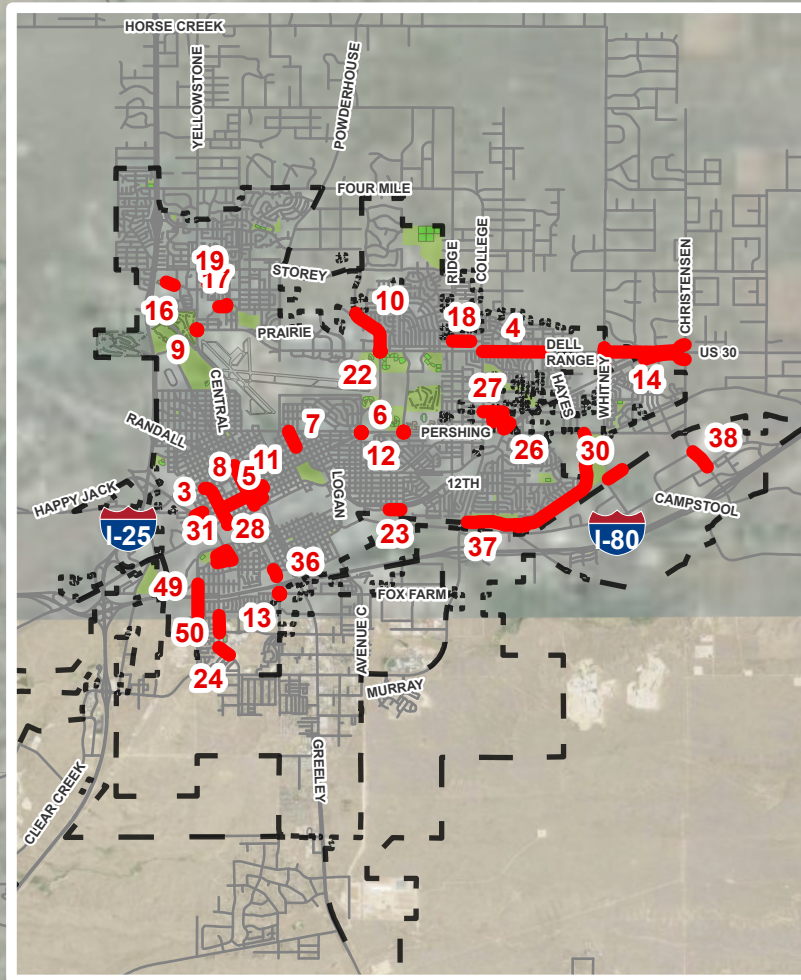
5  
Miles

Source: Esri, Maxar, Earthstar





# 2026 - 2029 Transportation Improvement Program



## Legend

- City of Cheyenne Boundary
- MPO Planning Boundary 2024
- City of Cheyenne TIP 2026-2029

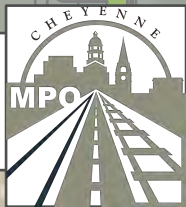
This map/data is made possible through the Cheyenne and Laramie County Cooperative GIS (CLCCGIS) Program and is for display purposes only. The CLCCGIS invokes its sovereign and governmental immunity in allowing access to or use of this data, makes no warranties as to the validity, and assumes no liability associated with the use or misuse of this information.



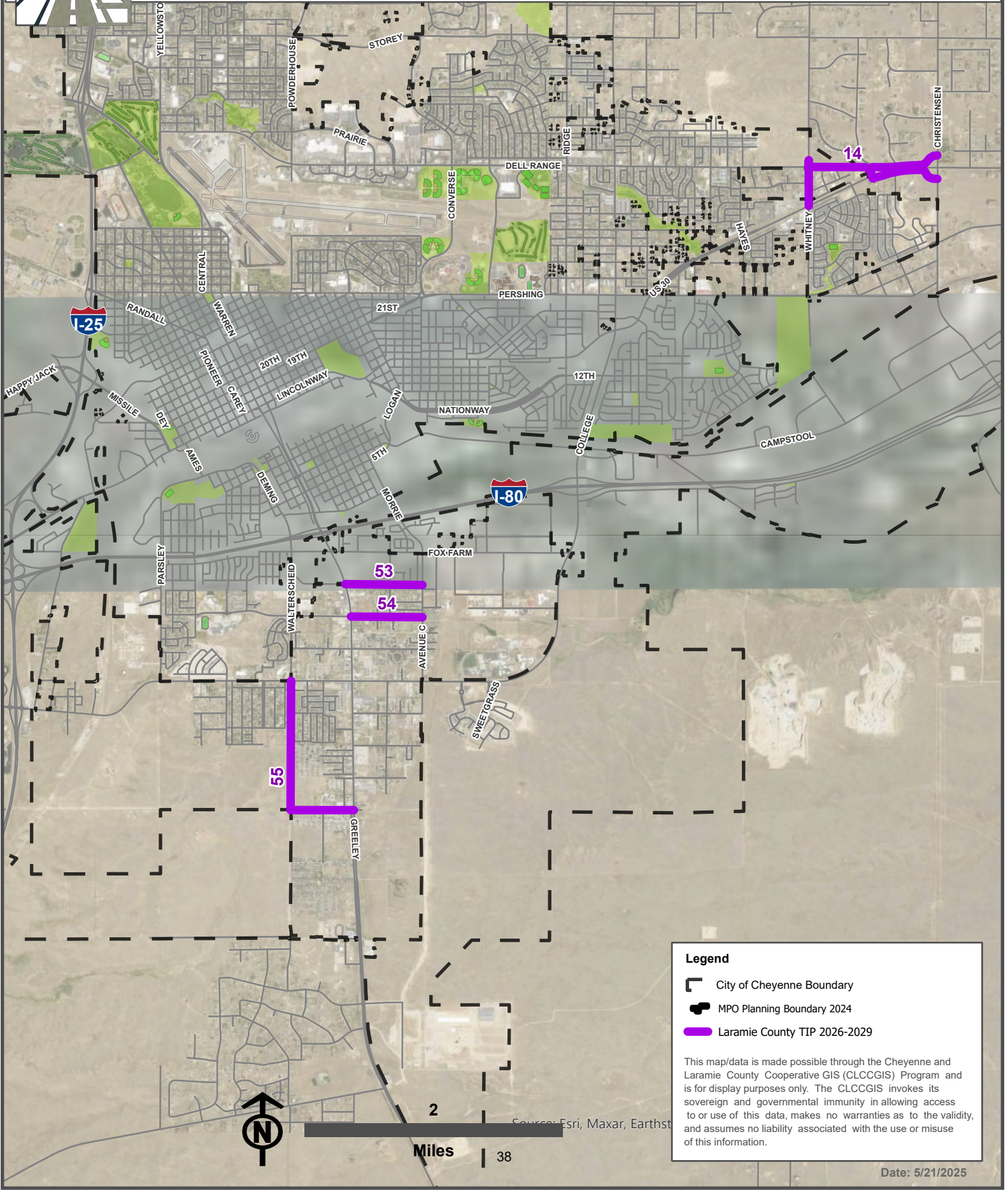
5

Miles





# 2026-2029 Transportation Improvement Program

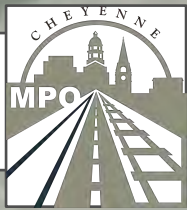


**Legend**

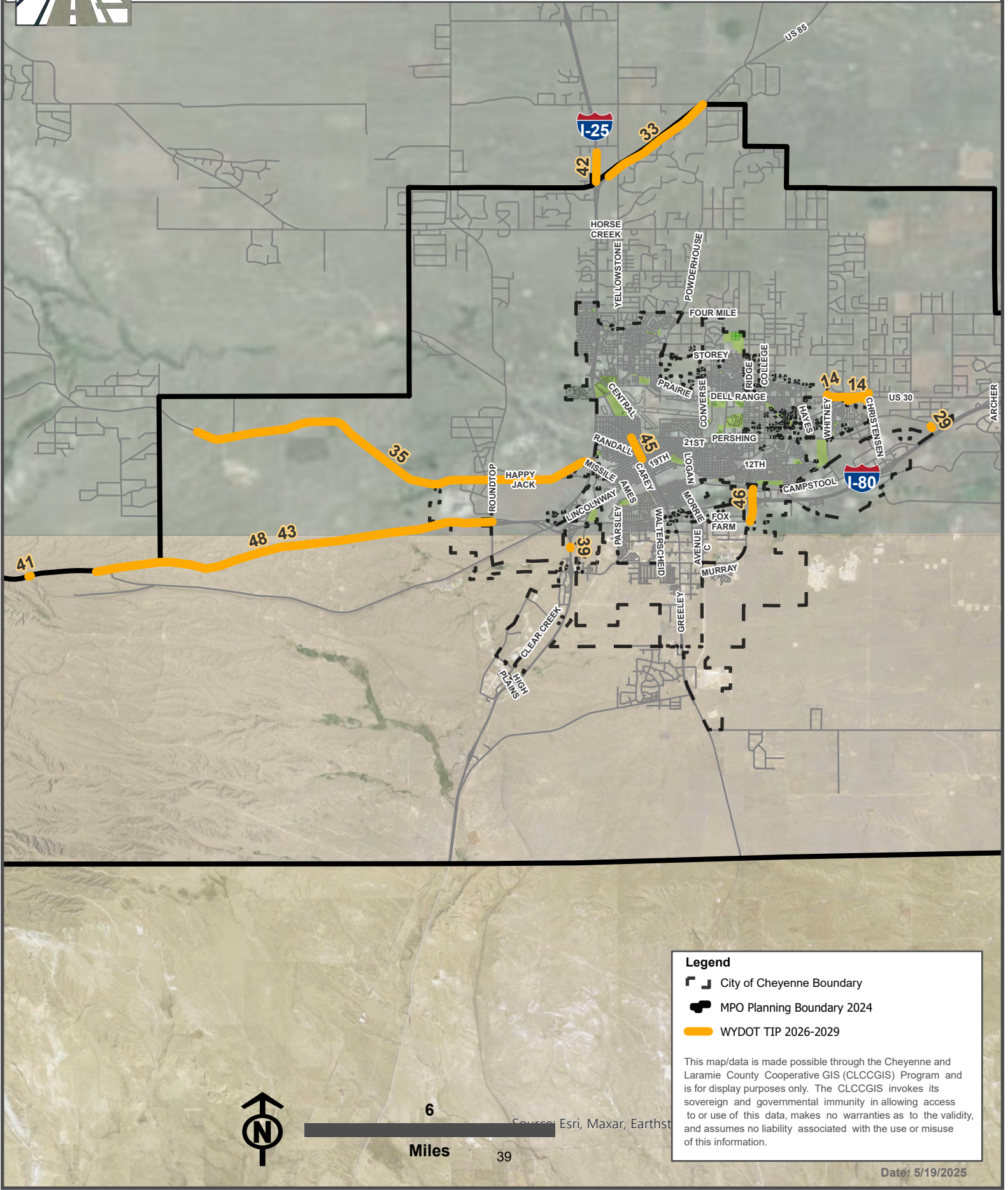
- City of Cheyenne Boundary
- MPO Planning Boundary 2024
- Laramie County TIP 2026-2029

This map/data is made possible through the Cheyenne and Laramie County Cooperative GIS (CLCCGIS) Program and is for display purposes only. The CLCCGIS invokes its sovereign and governmental immunity in allowing access to or use of this data, makes no warranties as to the validity, and assumes no liability associated with the use or misuse of this information.





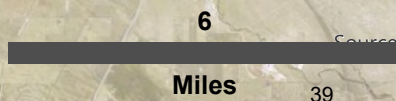
# 2026-2029 Transportation Improvement Program



**Legend**

- City of Cheyenne Boundary
- MPO Planning Boundary 2024
- WYDOT TIP 2026-2029

This map/data is made possible through the Cheyenne and Laramie County Cooperative GIS (CLCCGIS) Program and is for display purposes only. The CLCCGIS invokes its sovereign and governmental immunity in allowing access to or use of this data, makes no warranties as to the validity, and assumes no liability associated with the use or misuse of this information.



Source: Esri, Maxar, Earthstar

# Appendix C - Self-Certification

In accordance with 23 CFR 450.334, the Wyoming Department of Transportation, and the Cheyenne Metropolitan Planning Organization for the Cheyenne urbanized area hereby certify that the transportation planning process is addressing the major issues in the metropolitan planning area and is being conducted in accordance with all applicable requirements of:

- (1) 23 U.S.C. 134, 49 U.S.C. Section 5303, and 23 CFR Part 450;
- (2) Sections 174 and 176(c) and (d) of the Clean Air Act as amended (42 U.S.C. 7504, 7506(c) and (d) and 40 CFR 93);
- (3) Title VI of the Civil Rights Act of 1964, as amended (42 U.S.C. 2000d-1) and 49 CFR part 21;
- (4) 49 U.S.C. 5332, prohibiting discrimination on the basis of race, color, creed, national origin, sex or age in employment or business opportunity;
- (5) Section 1101(b) of the Fixing America's Surface Transportation Act (Pub. L. No. 114-357) and 49 CFR Part 26 regarding the involvement of Disadvantaged Business Enterprises in DOT funded projects;
- (6) 23 CFR part 230, regarding the implementation of an equal employment opportunity program on Federal and Federal-aid highway construction contracts;
- (7) The provisions of the Americans with Disabilities Act of 1990 (42 U.S.C. 12101 et seq.) and 49 CFR parts 27, 37, and 38;
- (8) Older Americans Act, as amended (42 U.S.C. 6101), prohibiting discrimination on the basis of age in programs or activities receiving Federal financial assistance;
- (9) Section 324 of title 23 U.S.C., regarding prohibition of discrimination based on gender; and
- (10) Section 504 of the Rehabilitation Act of 1973 (29 U.S.C. 794) and 49 CFR part 27 regarding discrimination against individuals with disabilities.

The Policy Committee of the Metropolitan Planning Organization has reviewed and approved on the 4th day of June 2025, this Transportation Improvement Program for Fiscal Years 2026-2027.

## Metropolitan Planning Organization

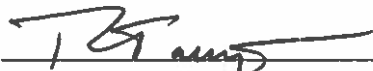
AUTHORITY:



Patrick Collins  
Mayor, City of Cheyenne  
Chairman, Policy Committee



Linda Heath  
Commissioner, Laramie County



Ralph Tarango, District Engineer  
Wyoming Department of Transportation

ATTEST:



Christopher Yaney  
MPO Director



Date