

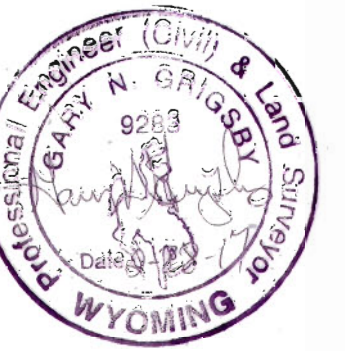
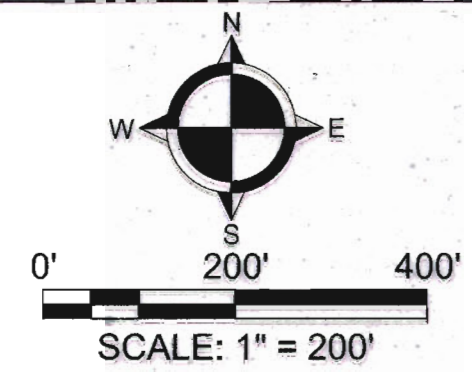
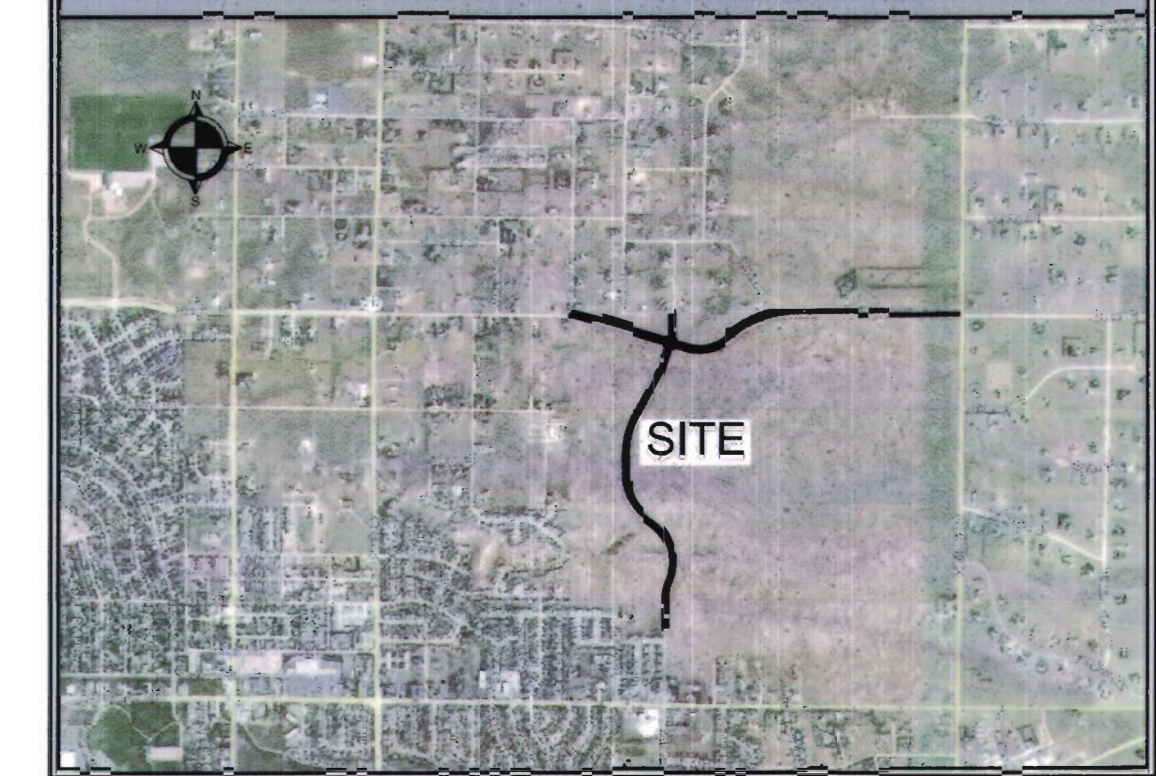
LEGEND OF SYMBOLS & ABBREVIATIONS

- SECTION
- QUARTER SECTION
- SIXTEENTH SECTION
- EXISTING RIGHT OF WAY
- PROPOSED RIGHT OF WAY
- EXISTING PROPERTY S
- EXISTING EASEMENT
- PROPOSED CENTER
- SECTION TIES
- (R) RECORD DISTANCE
- (M) MEASURED DISTANCE
- SET 3/4" X 24" REBAR WITH 2" ALUMINUM CAP STAMPED "PELS 9283"
- FOUND SECTION CORNERS
- FOUND QUARTER SECTION CORNERS
- FOUND MONUMENTS AS NOTED
- CONTROL POINT
- FOUND R.O.W. MONUMENTS
- ⊕ CALCULATED POINT

BASIS OF BEARING

THE SECTION LINE BEARING S 89° 50' 05" E, A DISTANCE 2703.93' MONUMENTED AS SHOWN HEREON, BETWEEN THE NORTH WEST CORNER OF SECTION 23 AND THE NORTH 1/4 CORNER OF SECTION 23.

VICINITY MAP - NOT TO SCALE



Western
RESEARCH & DEVELOPMENT, LTD.
5908 YELLOWSTONE ROAD, SUITE B CHEYENNE, WY. 82009 (307) 632-5556

CITY OF CHEYENNE
LARAMIE COUNTY,
WYOMING

OFFICIAL MAP
STOREY BOULEVARD

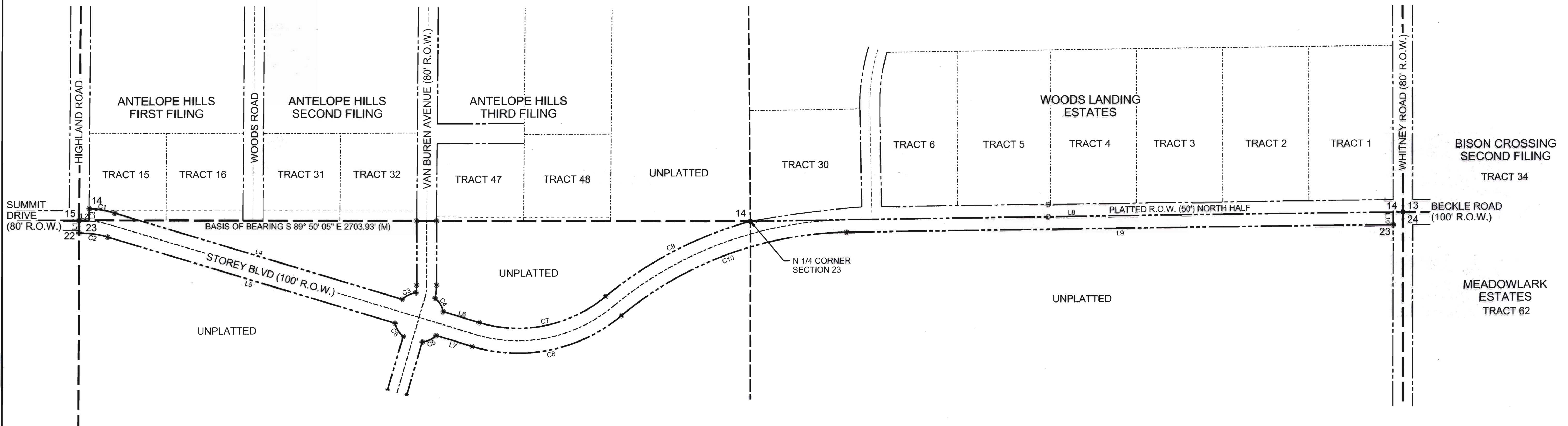
PROJECT NUMBER:
130-1709-00

DRAWING TITLE

DATE: FEBRUARY 2017

SHEET NUMBER

1 of 2



LINE-CURVE TABLE

Element	Radius (ft)	Delta	Length (ft)	Direction	Distance (ft)
L1				N 0° 9' 55" E	50.02
L2				S 89° 50' 5" E	40.00
L3				N 0° 21' 7" E	48.46
C1	500.00 R	12° 3' 10"	105.18	S 79° 18' 47" E	104.99
C2	400.00 R	16° 41' 13"	116.50	S 81° 37' 49" E	116.09
L4				S 73° 17' 12" E	1209.29
L5				S 73° 17' 12" E	1209.29
C3	100.00 L	35° 40' 49"	62.27	S 64° 33' 12" W	61.27
C4	100.00 L	37° 2' 26"	64.65	N 31° 48' 25" W	63.53
C5	100.00 L	36° 8' 19"	63.02	N 64° 45' 57" E	61.98
C6	100.00 L	36° 44' 18"	64.12	S 31° 39' 21" E	63.03
L6				S 73° 17' 12" E	150.85
L7				S 73° 17' 12" E	150.85
C7	550.00 L	56° 16' 32"	540.21	N 78° 34' 31" E	518.75
C8	650.00 L	56° 19' 48"	639.04	N 78° 32' 54" E	613.62
C9	1550.00 R	24° 27' 40"	861.74	N 62° 40' 5" E	856.72
C10	1450.00 R	38° 55' 24"	985.05	N 69° 50' 42" E	966.21
L8				N 89° 18' 24" E	2588.99
L9				N 89° 18' 24" E	2201.67
L10				N 0° 35' 8" W	50.00

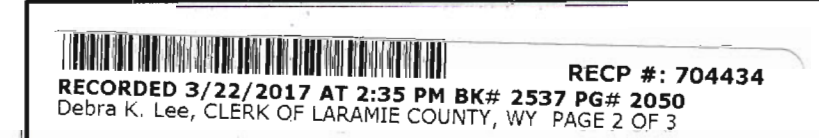
APPROVAL

ADOPTED BY THE GOVERNING BODY OF THE CITY OF CHEYENNE, WYOMING.
BY ORDINANCE NO. 4167 ON THE 27 DAY OF Feb, 2017.

Whittle
MAYOR

ATTEST: *Carol Antleke*
CITY CLERK

Filing Record
The State of Wyoming
County of Laramie
This instrument was filed for record



County Clerk & Co-Officio Registrar of Deeds
by *Debra K. Lee* Deputy

COPYRIGHT 2017

BY WESTERN RESEARCH & DEVELOPMENT
THIS PRODUCT STYLE AND FORMAT IS PROTECTED BY COPYRIGHT AND ALL RIGHTS ARE RESERVED.
THE USE OF THIS STYLE AND FORMAT IS STRICTLY PROHIBITED WITHOUT THE WRITTEN CONSENT AND
PERMISSION OF WESTERN RESEARCH & DEVELOPMENT

OFFICIAL MAP

for
**STOREY BOULEVARD AND
VAN BUREN AVENUE**

SITUATE IN SECTION 23,
TOWNSHIP 14 NORTH, RANGE 66 WEST OF THE 6TH P.M., LARAMIE
COUNTY, WYOMING

CERTIFICATE OF SURVEYOR

State of Wyoming } ss
County of Laramie }

I, Gary N. Grigsby, a Professional Engineer and Land Surveyor registered in the State of Wyoming do hereby certify that this Official Map was prepared from the records and field notes of a survey conducted under my supervision during the month of October, 2016, and that all dimensions and other details are correct to the best of my knowledge and belief.

Gary N. Grigsby
Gary N. Grigsby, Wyoming PE & PLS # 9283
February, 2017 (Job 130-1709-00)
For and on behalf of Western Research & Development, Ltd.

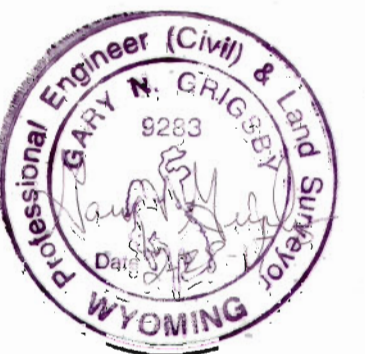
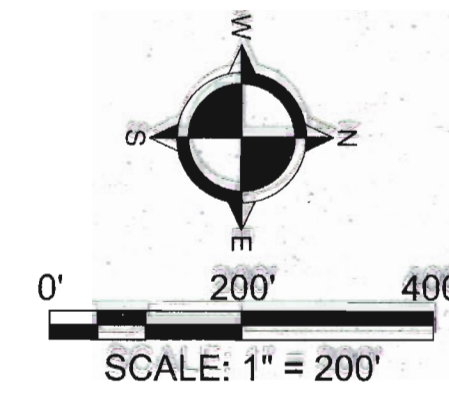
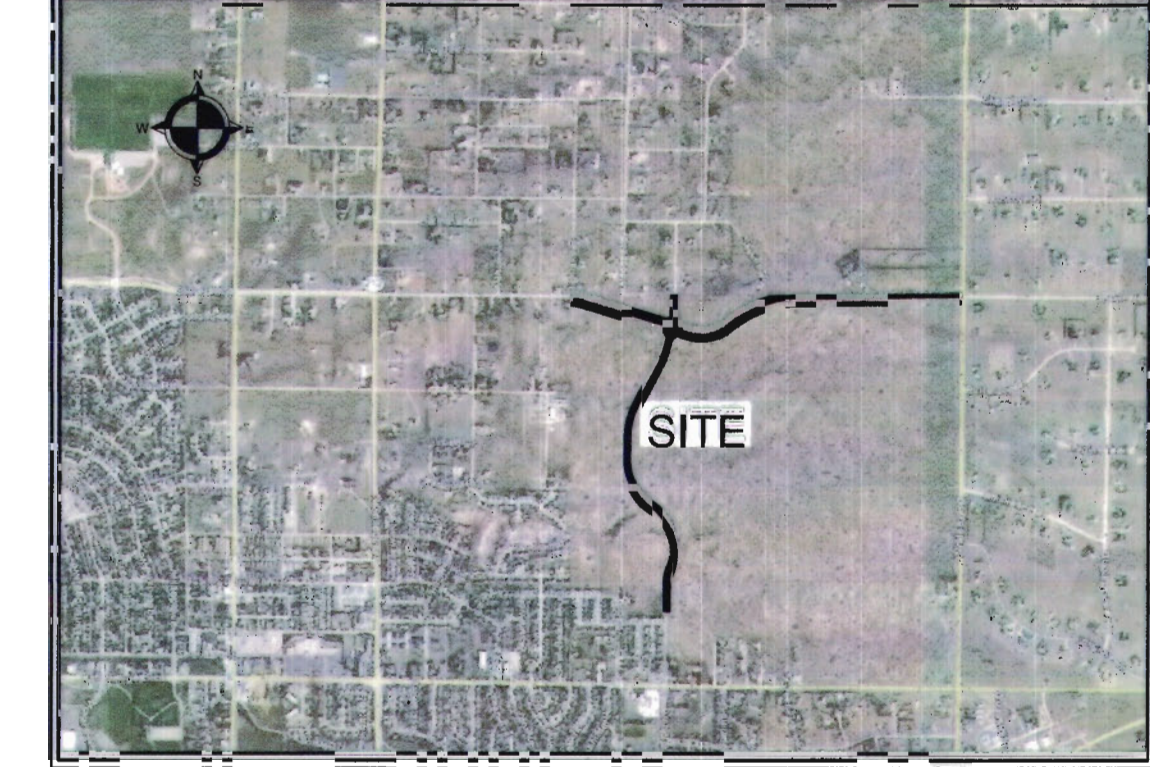
LEGEND OF SYMBOLS & ABBREVIATIONS

- SECTION
- QUARTER SECTION
- SIXTEENTH SECTION
- EXISTING RIGHT OF WAY
- PROPOSED RIGHT OF WAY
- EXISTING PROPERTY S
- EXISTING EASEMENT
- PROPOSED CENTER
- SECTION TIES
- (R) RECORD DISTANCE
- (M) MEASURED DISTANCE
- SET 3/4" X 24" REBAR WITH 2" ALUMINUM CAP STAMPED "PELS 9283"
- FOUND SECTION CORNERS
- FOUND QUARTER SECTION CORNERS
- FOUND MONUMENTS AS NOTED
- CONTROL POINT
- FOUND R.O.W. MONUMENTS
- CALCULATED POINT

BASIS OF BEARING

THE SECTION LINE BEARING S 89° 50' 05" E, A DISTANCE 2703.93' MONUMENTED AS SHOWN HEREON, BETWEEN THE NORTH WEST CORNER OF SECTION 23 AND THE NORTH 1/4 CORNER OF SECTION 23.

VICINITY MAP - NOT TO SCALE

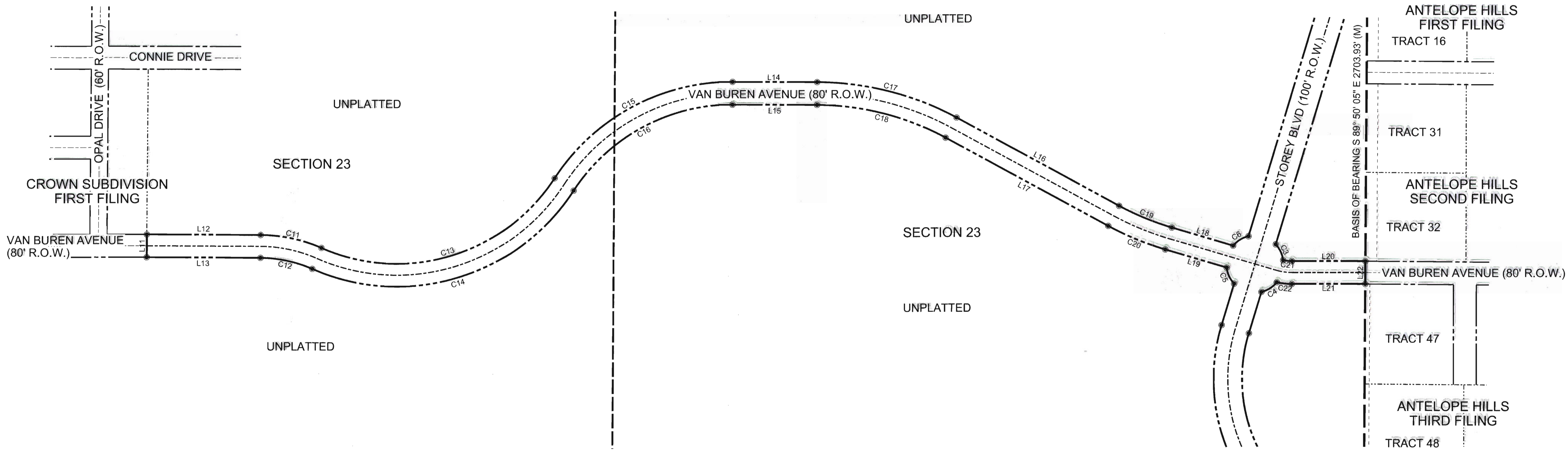


Western
RESEARCH & DEVELOPMENT, LTD.
5908 YELLOWSTONE ROAD, SUITE 100, CHEYENNE, WY. 82009 (307) 652-5656

CITY OF CHEYENNE
LARAMIE COUNTY,
WYOMING

OFFICIAL MAP
VAN BUREN AVENUE

DATE: FEBRUARY 2017
SCALE: 1" = 200'
DRAWN/REKEL BY: RDC/TDS
PROJECT NUMBER: 130-1709-00



LINE-CURVE TABLE

Element	Radius (ft)	Delta	Length (ft)	Direction	Distance (ft)
L11				S 89° 54' 56" E	80.00
L12				N 0° 15' 50" E	399.70
L13				N 0° 15' 50" E	399.45
C11	540.00 R	23° 19' 7"	219.77	N 11° 55' 24" E	218.26
C12	460.00 R	23° 19' 7"	187.21	N 11° 55' 24" E	185.92
C13	660.00 L	80° 36' 45"	928.59	N 16° 43' 25" W	853.87
C14	740.00 L	80° 36' 45"	1041.14	N 16° 43' 25" W	957.37
C15	740.00 R	57° 13' 20"	739.05	N 28° 25' 7" W	708.72
C16	660.00 R	57° 13' 20"	659.15	N 28° 25' 7" W	632.10
L14				N 0° 11' 33" E	296.98
L15				N 0° 11' 33" E	296.98
C17	1040.00 R	28° 9' 52"	511.23	N 14° 18' 29" E	506.10
C18	960.00 R	28° 9' 52"	471.90	N 14° 18' 29" E	467.17
L16				N 28° 21' 25" E	650.32
L17				N 28° 21' 25" E	650.32
C19	960.00 L	11° 57' 37"	200.40	N 22° 22' 37" E	200.03
C20	1040.00 L	11° 57' 37"	217.10	N 22° 22' 37" E	216.70
L18				N 16° 23' 48" E	224.78
L19				N 16° 23' 48" E	224.78
C3	100.00 L	35° 40' 49"	62.27	S 84° 33' 12" W	61.27
C4	100.00 L	37° 2' 26"	64.65	N 31° 48' 25" W	63.53
C5	100.00 L	36° 6' 19"	63.02	N 64° 45' 57" E	61.98
C6	100.00 L	36° 44' 18"	64.12	S 31° 39' 21" E	63.03
C21	160.00 L	11° 6' 59"	31.04	N 5° 33' 30" E	30.99
C22	240.00 L	12° 45' 27"	53.44	N 6° 22' 44" E	53.33
L20				N 0° 0' 0" W	257.79
L21				N 0° 0' 0" W	257.56
L22				S 89° 50' 5" E	80.00

APPROVAL
ADOPTED BY THE GOVERNING BODY OF THE CITY OF CHEYENNE, WYOMING.
BY ORDINANCE NO. 4167 ON THE 27th DAY OF Feb, 2017.

Maria
MAYOR
ATTEST: *Carol Antlekofer*
CITY CLERK

Filing Record
The State of Wyoming
County of Laramie
This instrument was filed for record
RECP #: 704434
RECORDED 3/22/2017 AT 2:33 PM BK# 2537 PG# 2051
Debra K. Lee, CLERK OF LARAMIE COUNTY, WY PAGE 3 OF 3
County Clerk & Co-Office Registrar of Deeds
by *Debra K. Lee* Deputy

COPYRIGHT 2017
BY WESTERN RESEARCH & DEVELOPMENT
THIS PRODUCT STYLE AND FORMAT IS PROTECTED BY COPYRIGHT AND ALL RIGHTS ARE RESERVED.
THE USE OF THIS STYLE AND FORMAT IS STRICTLY PROHIBITED WITHOUT THE WRITTEN CONSENT AND PERMISSION OF WESTERN RESEARCH & DEVELOPMENT.

OFFICIAL MAP

STOREY BOULEVARD AND VAN BUREN AVENUE

SITUATE IN SECTION 23,
TOWNSHIP 14 NORTH, RANGE 66 WEST OF THE 6TH P.M., LARAMIE COUNTY, WYOMING

CERTIFICATE OF SURVEYOR
State of Wyoming }
County of Laramie } ss

I, Gary N. Grigsby, a Professional Engineer and Land Surveyor registered in the State of Wyoming do hereby certify that this Official Map was prepared from the records and field notes of a survey conducted under my supervision during the month of October, 2016, and that all dimensions and other details are correct to the best of my knowledge and belief.

Gary N. Grigsby
Gary N. Grigsby, Wyoming PE & PLS #9283
February, 2017 (Job 130-1709-00)
For and on behalf of Western Research & Development, Ltd.