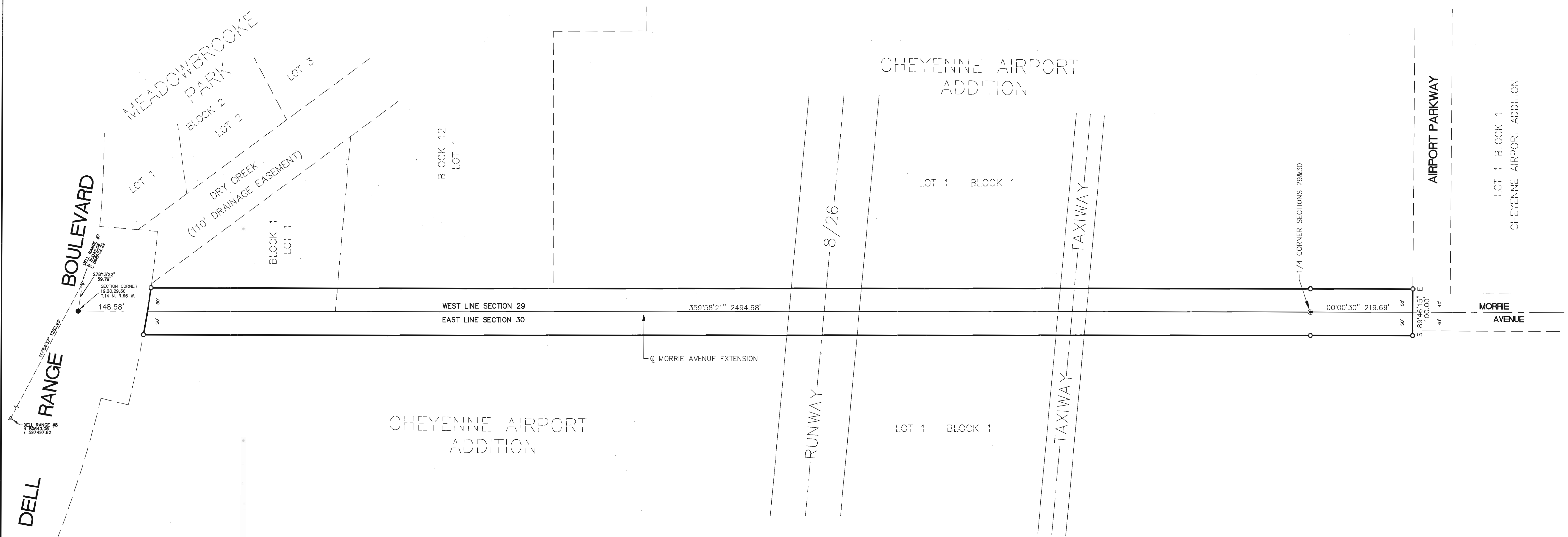


LEGEND

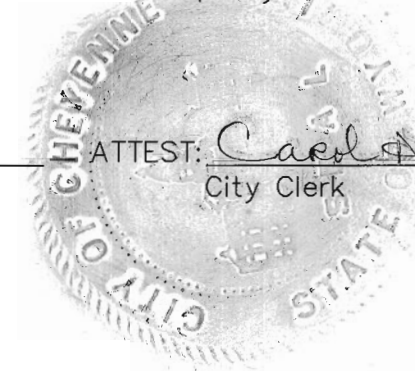
- SET 3/4" X 24" LONG REBAR WITH 1/2" ALUMINUM CAP STAMPED "SSS P.L.S. 2500"
- FOUND HIGHWAY DEPARTMENT 3/2" ALUMINUM CAP AND APPROPRIATE DATA
- ⊙ FOUND 1/2" ALUMINUM CAP STAMPED "L.S. 2500" AND APPROPRIATE DATA



APPROVALS

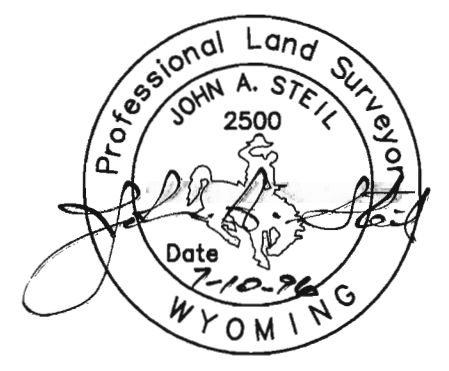
Adopted by the Governing Body of the City of Cheyenne, Wyoming, by Ordinance No. 3277, on the 12th day of May, 1996

Mayor: [Signature] ATTEST: [Signature]
City Clerk



CERTIFICATE OF SURVEYOR

I, John A. Steil, Registered Professional Surveyor in the State of Wyoming, hereby certify that this "Official Map" of Morrie Avenue Extension was prepared from official plat and deeds of record and from notes of a field survey conducted by me or under my direct supervision, that the monuments are set or found as shown and that this "Official Map" depicts said survey of the land shown hereon to the best of my knowledge.



OFFICIAL MAP

**MORRIE AVENUE EXTENSION
RUNWAY 8/26 UNDERPASS**

SITUATED IN A PORTION OF LOT 1, BLOCK 1, & LOT 1, BLOCK 12, MEADOWBROOKE PARK, AND IN A PORTION OF LOT 1, BLOCK 1, CHEYENNE AIRPORT ADDITION, CITY OF CHEYENNE, LARAMIE COUNTY, WYOMING.

PREPARED MARCH, 1995



STEIL SURVEYING SERVICES, LLC
PROFESSIONAL LAND SURVEYORS
1102 WEST 19th STREET P.O. BOX 2073
PH(307)634-7273 CHEYENNE, WY. 82003

| | |
|-----------------------|---|
| <p>AZIMUTH</p> | <p>FILING RECORD</p> <p>Reception <u>188345</u></p> <p>The State of Wyoming } ss County of Laramie }</p> <p>This instrument was filed for record at <u>12:59</u> o'clock <u>P</u> M, on the <u>20</u> day of <u>August</u>, A.D. 19<u>95</u> and duly recorded in Book <u>149</u> Page <u>54</u> P/C <u>1</u></p> <p>By <u>[Signature]</u> County Clerk & Ex-Officio Registrar at Deeds By <u>[Signature]</u> Deputy</p> |
|-----------------------|---|