



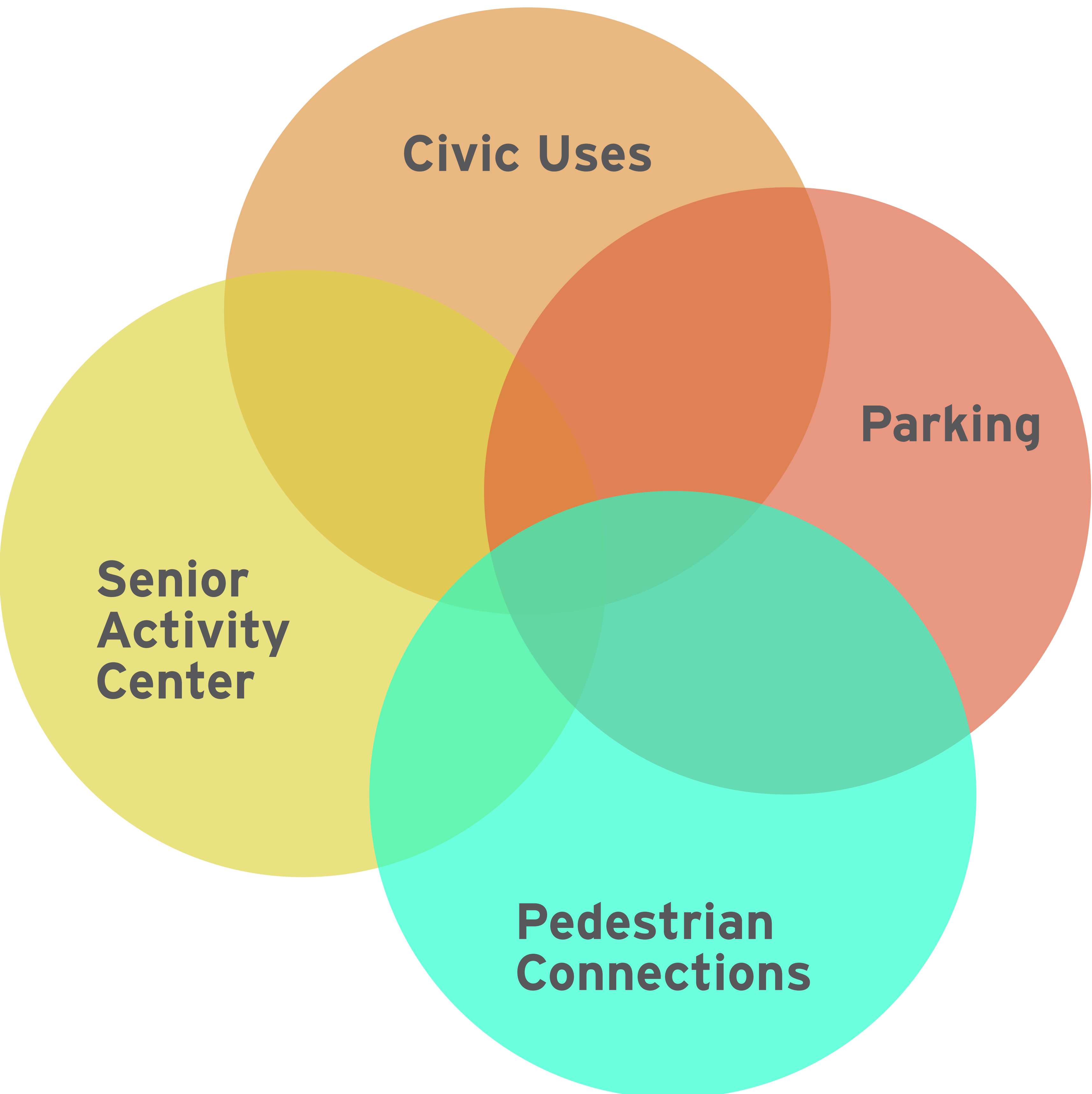
# Municipal Complex Pedestrian Routing Plan

## PUBLIC WORKSHOP

October 23, 2018  
5:30 - 7:00 pm



# Balancing Needs

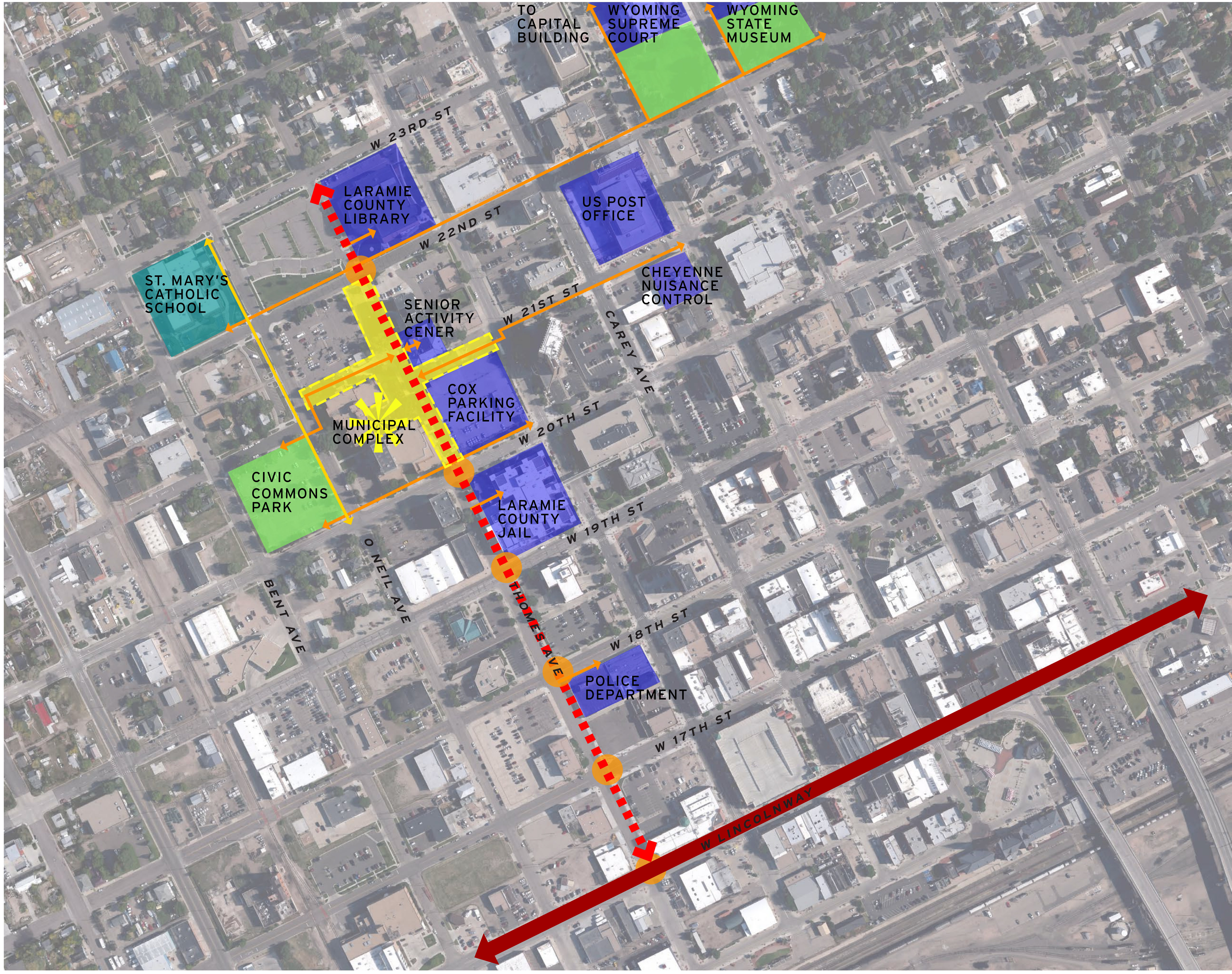


## Discussion Items:

- Pedestrian Connectivity
- Pedestrian Access and Safety
- Design Character
- Parking



# Civic Spine Connections

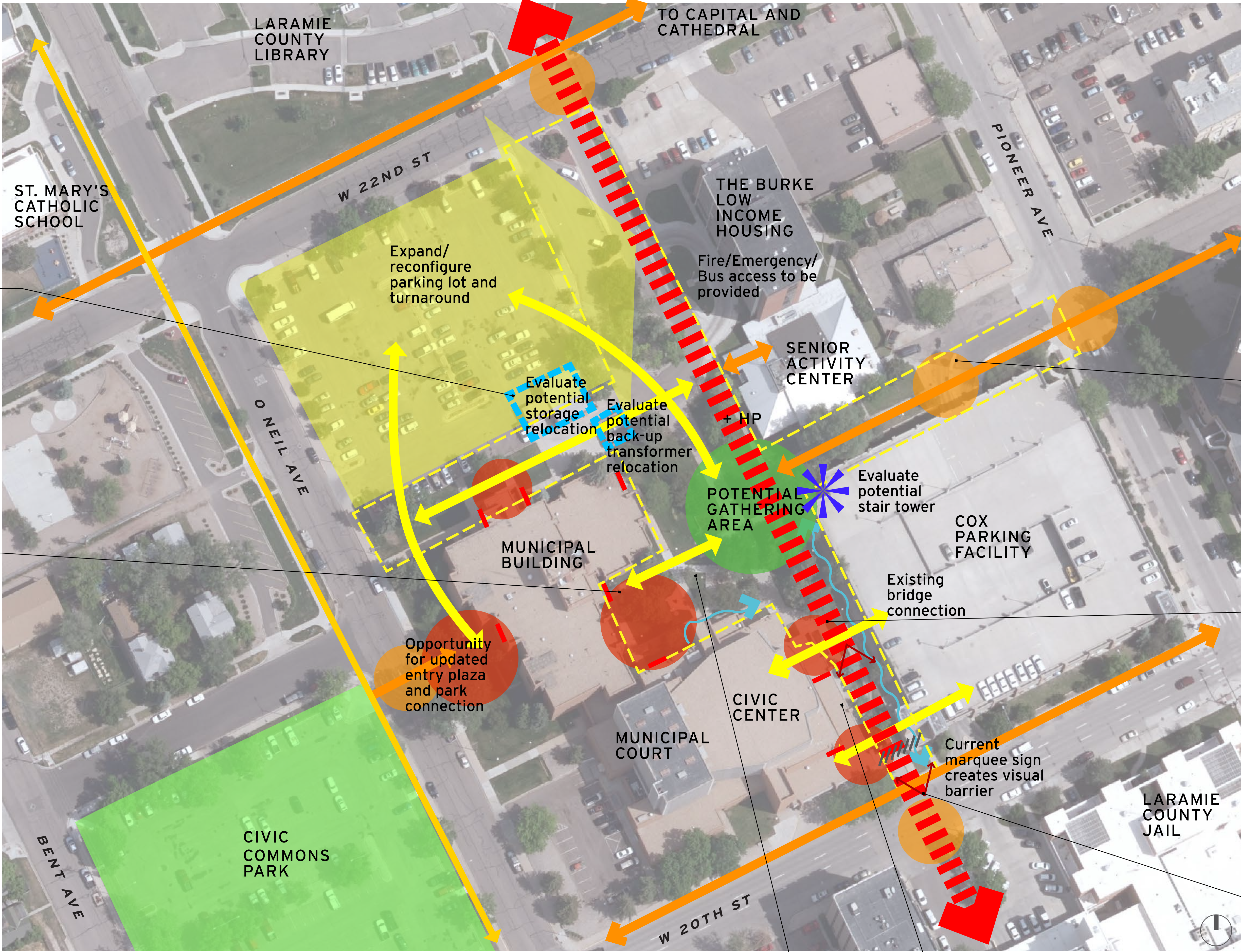


- Legend**
- ◀ Civic Spine
  - Secondary Pedestrian Route
  - Saint Mary's School Connection
  - Upgraded Pedestrian Crossing
  - Civic Area
  - Park
  - School
  - Residential
  - Study Area

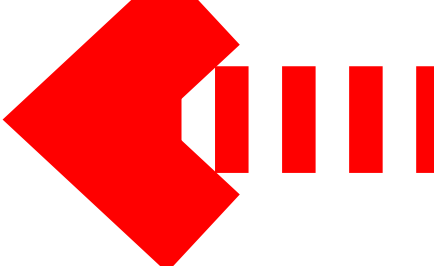











# Site Analysis



## Legend

-  Civic Spine
-  Secondary Pedestrian Route
-  Internal Connection
-  Saint Mary's School Connection
-  Opportunity Area
-  Central Focal Point
-  Entry Plaza
-  Upgraded Pedestrian Crossing



Enclosed storage buildings block visual connection from O Neil Ave to pedestrian spine



Enclosed break area is disconnected and limits views into breezeway



Existing crossing across garage entry drive is not intuitive or safe



Visual connection to 20th St blocked by large mid story trees and brick columns that interrupt walkway



Lists city employees that have passed away



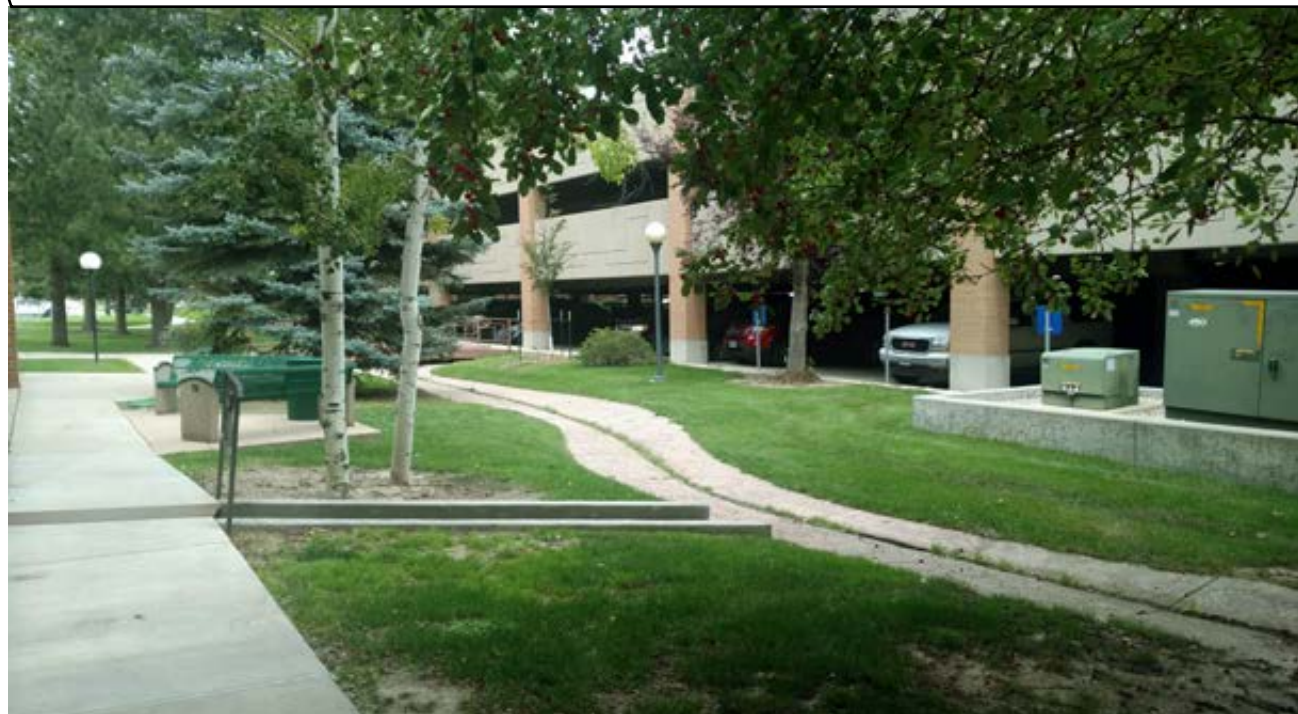
Many of the companies listed are no longer in business



Could be relocated



Time capsules do not currently hold any actual materials



Existing Drainage Pan



Visual connection from 20th St into breezeway blocked by sign



**russe||lls** **AVRES ASSOCIATES**

2018.10.30

## Municipal Complex Pedestrian Routing Plan



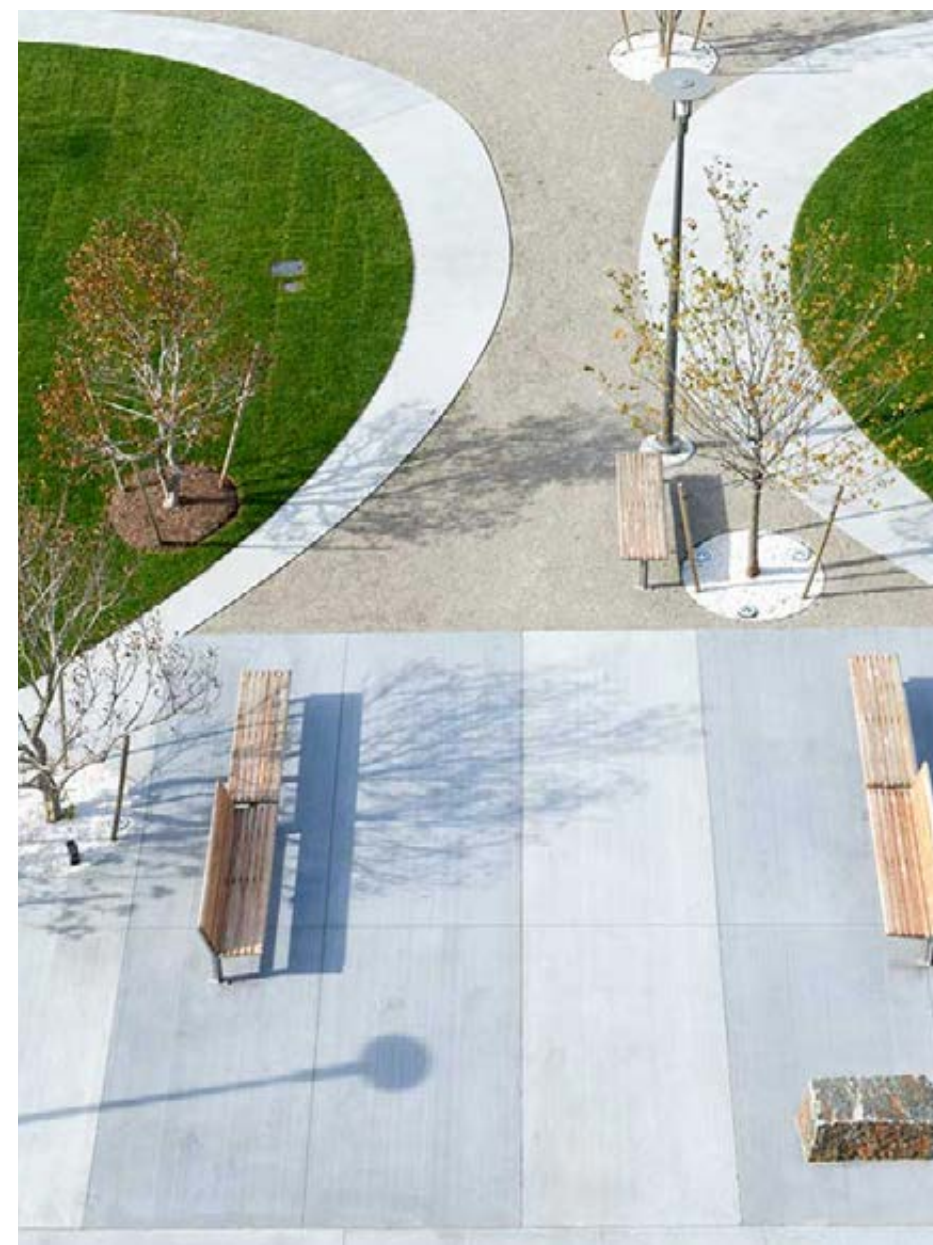
# Goal #1: Enhance connections within the Municipal Complex and to destinations beyond



## Objectives

Create clear and intuitive entry points and connections

Create clear and intuitive connections to adjacent parking lots and structures



Create simple and clear walkways that contribute to formal expression and character



Provide clear wayfinding through strong pathways and origin to destination visual cues and signage

Establish Municipal Spine along Thomes Avenue



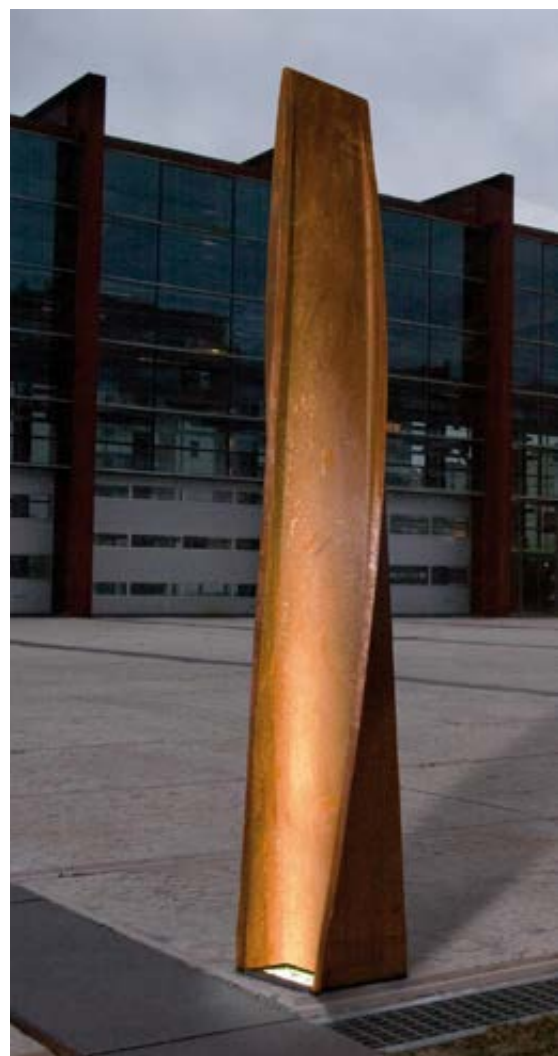
# Goal #2: Increase overall pedestrian safety, comfort and function

## Objectives

Reduce pedestrian and vehicular conflict



Create a safe and inviting evening experience for employees and visitors with appropriate lighting levels



Reduce presence of middle story planting and visual clutter and provide views through spaces



Activate and bring life to under-utilized spaces and assets



# Goal #3: Continue to establish municipal character and identity

## Objectives

Use materials of enduring quality and that communicate civic pride

Take cues from regional influences and stakeholders input that highlight historic and valued assets





# Site Parking Analysis

## Legend

- Public parallel parking
- Public diagonal parking
- Reserved parking
- Bus stop



Cheyenne  
Municipal Area  
Parking Study



Prepared for:  
The City of Cheyenne  
2101 O'Neil Avenue, Cheyenne, WY 82001  
Prepared by:  
Charlier Associates, Inc.  
2919 Valmont Road, Suite #206, Boulder, CO 80301

September 2016



russe  
mills  
AYRES  
ASSOCIATES

2018.10.30



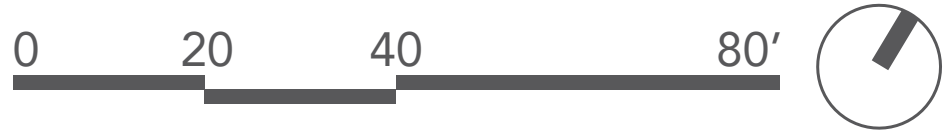
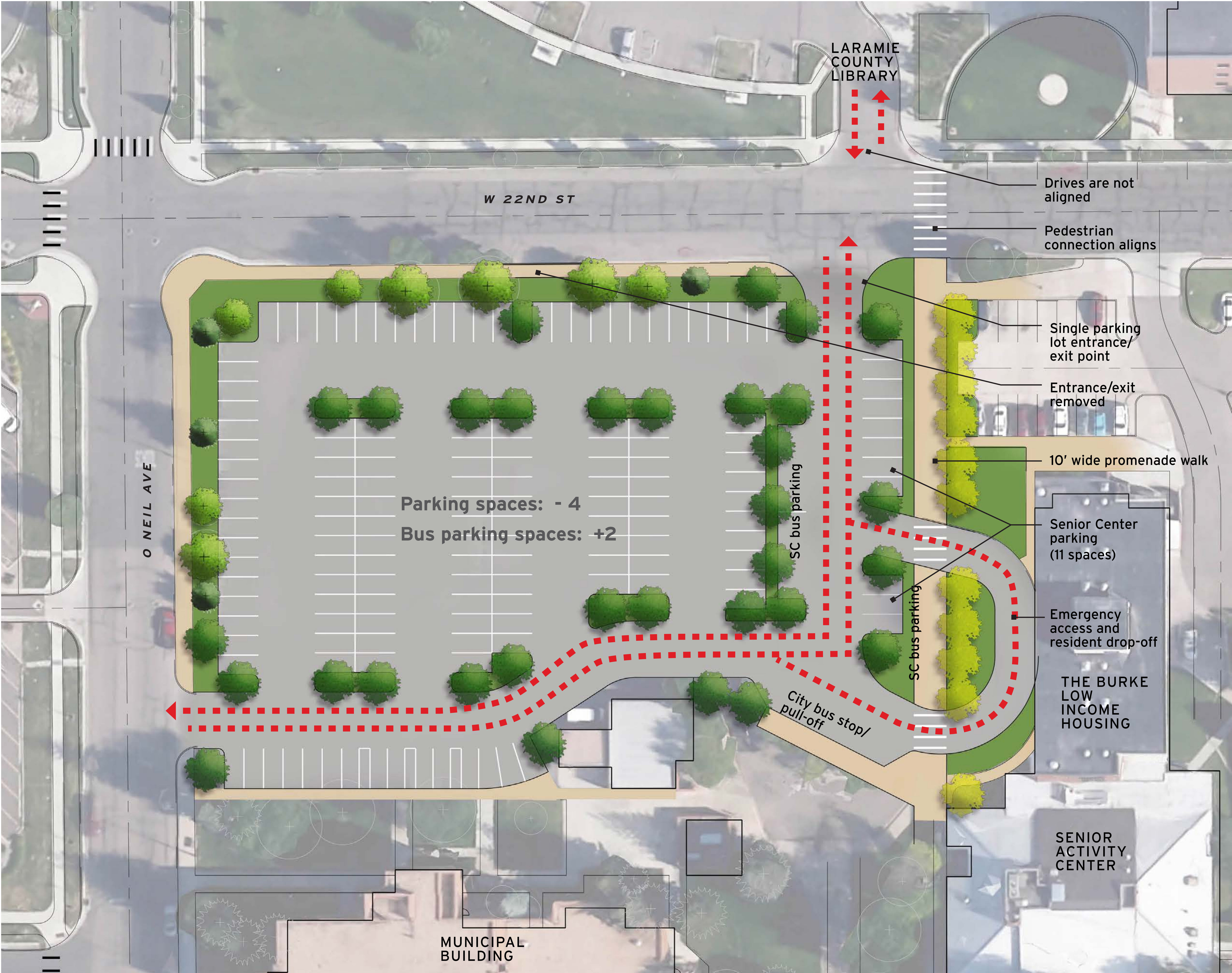
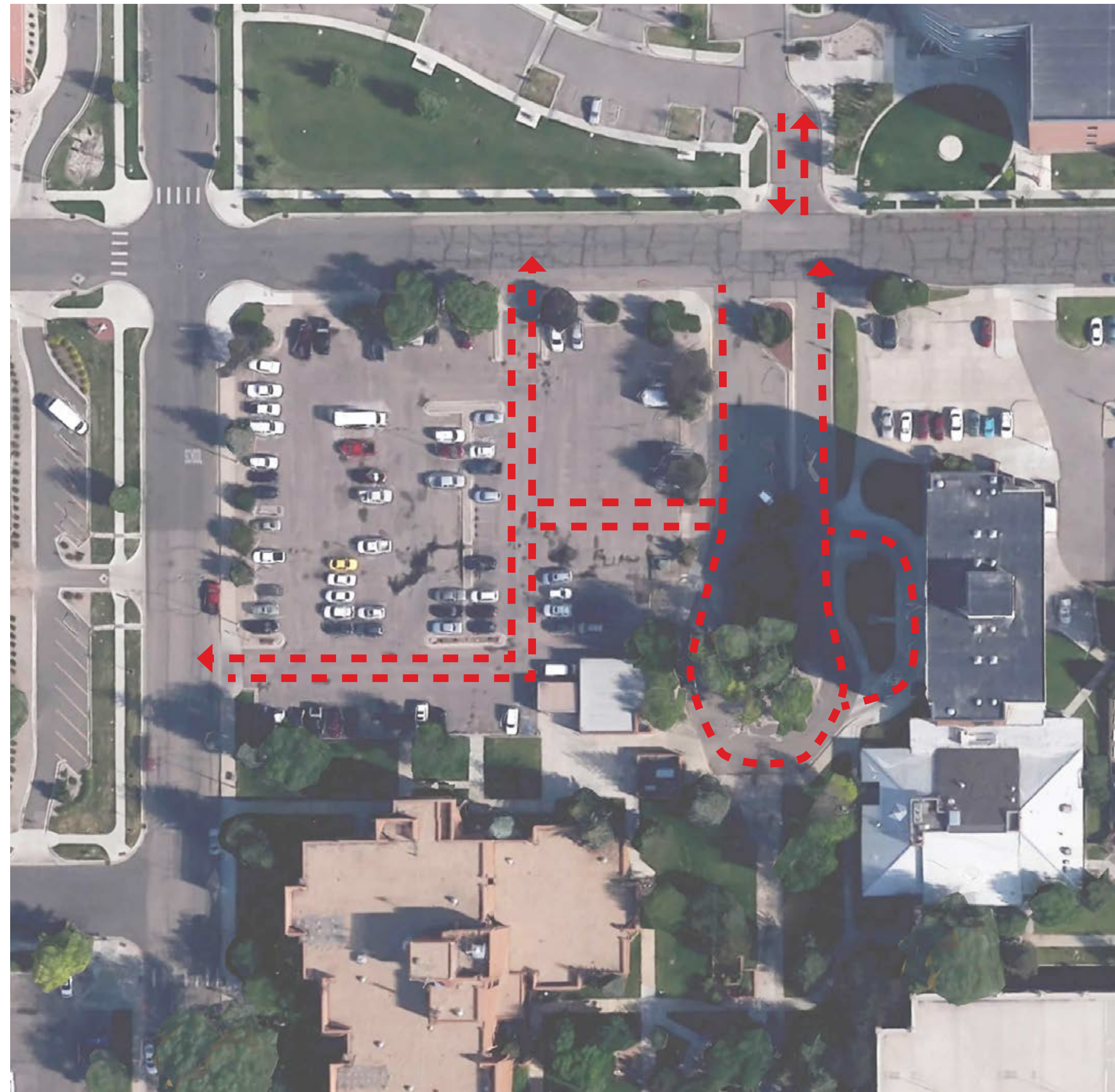
# North Lot: Option 1

Designed to Cheyenne Uniform Development Code (UDC) Standards:

- Parking spaces: 9'x18.5'
- Drive aisles: 26'
- Parking Lot Internal Landscape Area: Minimum 5%

## Existing North Lot

Parking spaces: 153



russe  
mills

AVRES  
ASSOCIATES

2018.10.30



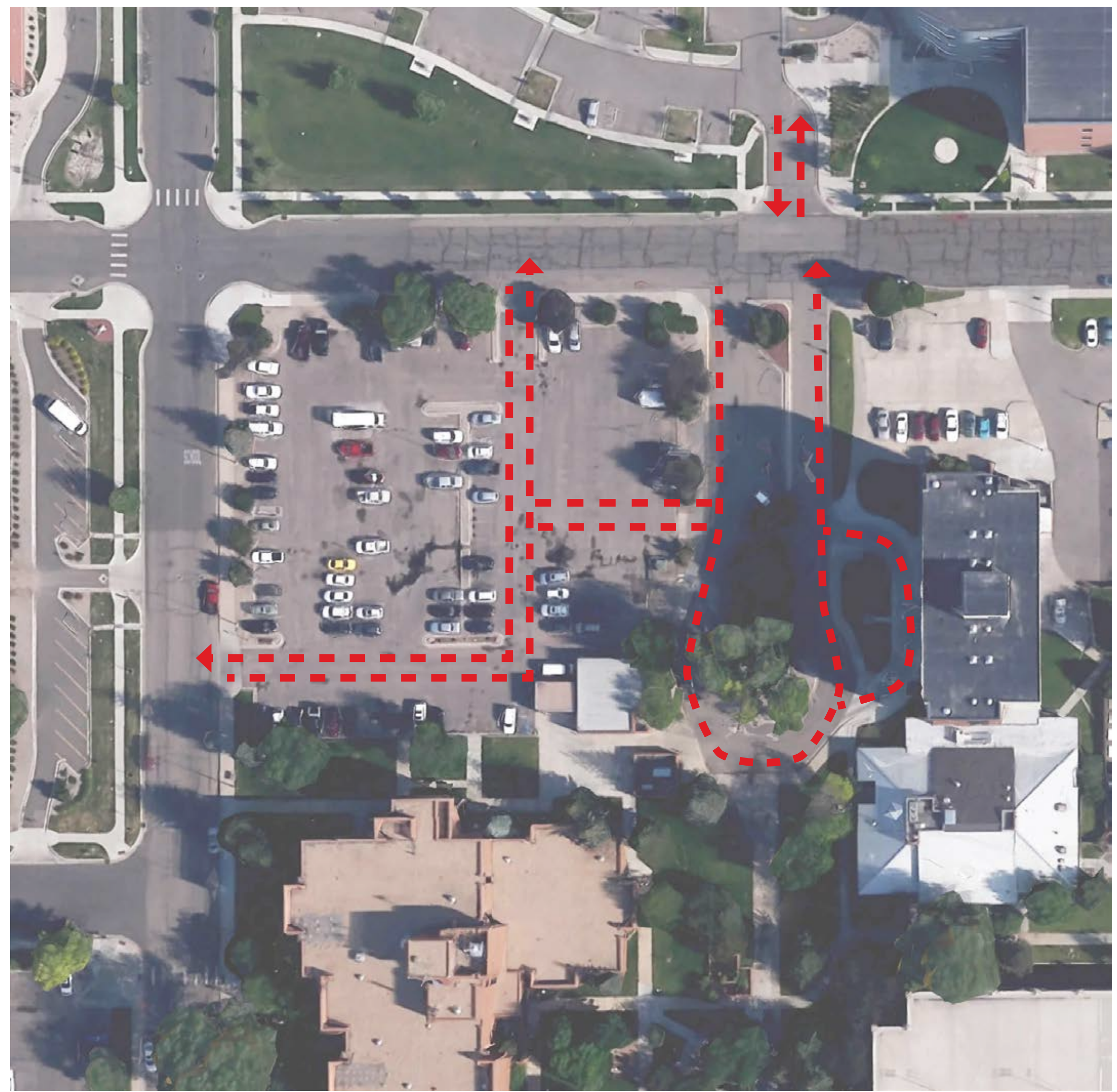
# North Lot: Option 2

Designed to Cheyenne Uniform Development Code (UDC) Standards:

- Parking spaces: 9'x18.5'
- Drive aisles: 26'
- Parking Lot Internal Landscape Area: Minimum 5%

## Existing North Lot

Parking spaces: 153



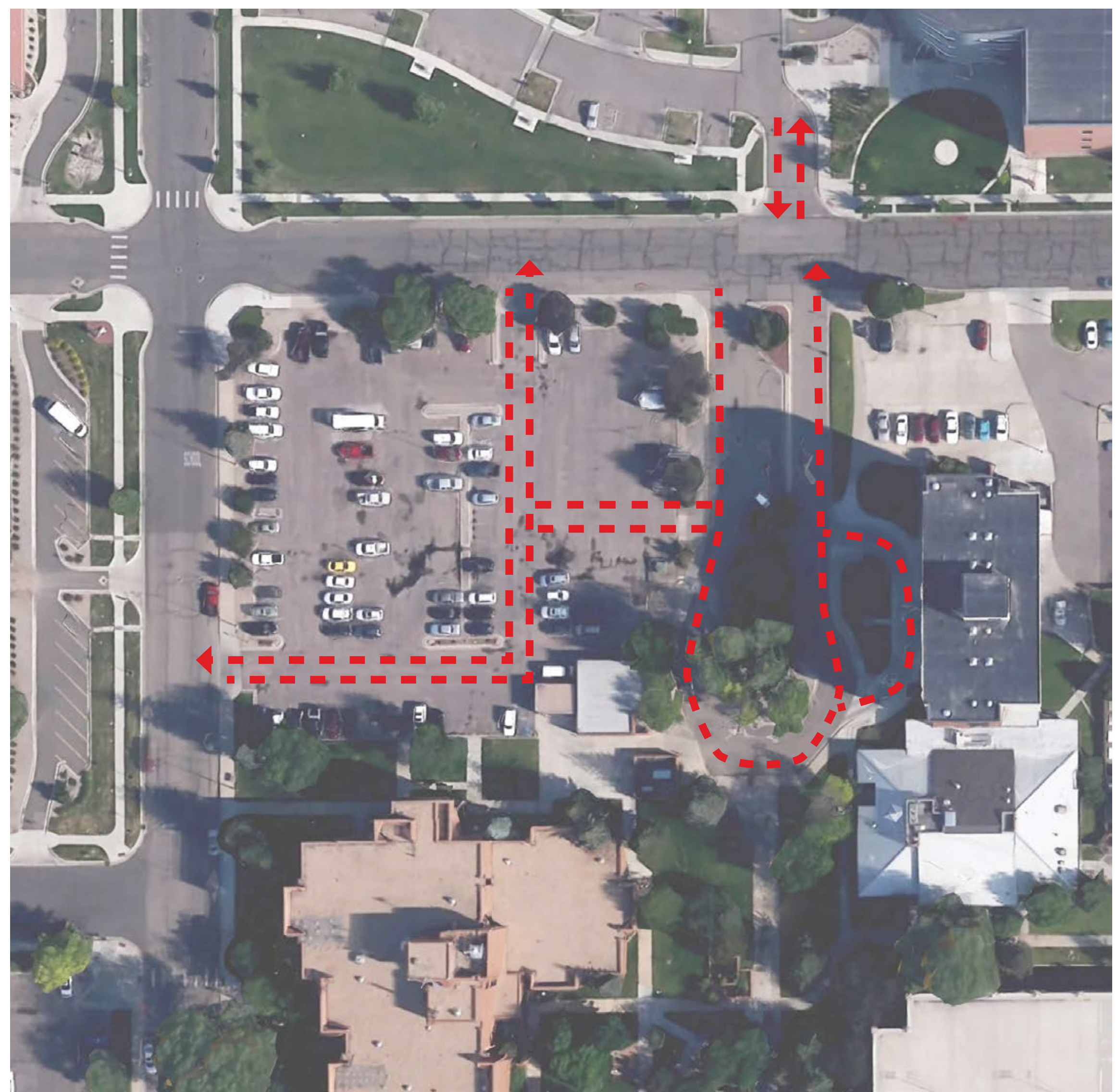


# North Lot: Option 3

Designed to Cheyenne Uniform Development Code (UDC) Standards:  
Parking spaces: 9'x18.5'  
Drive aisles: 26'  
Parking Lot Internal Landscape Area: Minimum 5%

## Existing North Lot

Parking spaces: 153





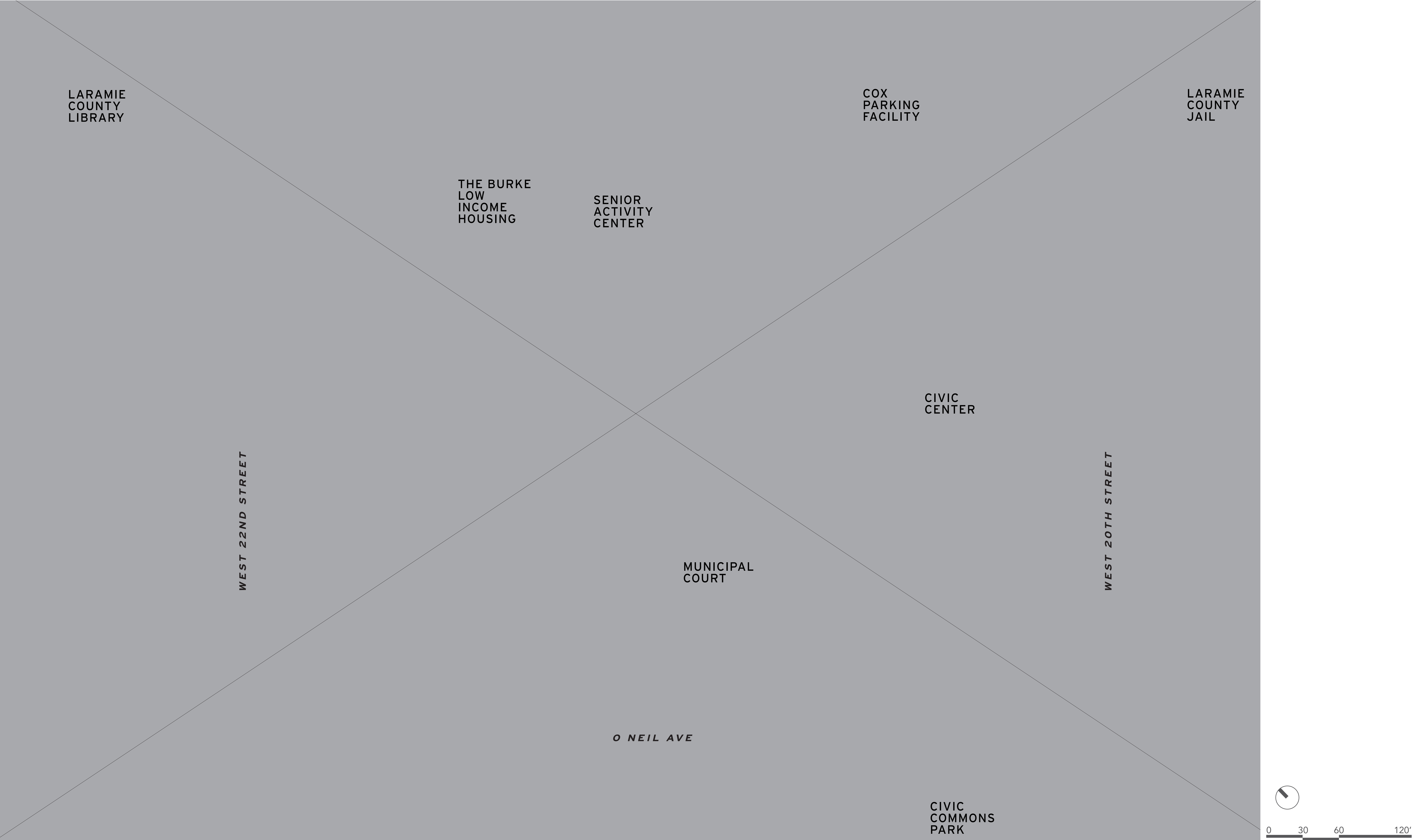
# Program Matrix

Program Element	Space Size	Used By
Central Pedestrian Walkway	Minimum 12' wide	Public
Beer Garden/Patio Area	Seating for 25-35 people	Event
Outdoor Table Seating/Employee Break Area	Seating for 10-20 people	Employees
Small Gathering Space	20-40 people	Public
Outside parking garage staircase tower	N/A	Public
Memorial Space	Varies on approach	Public
Provide close easily accessible parking for Seniors to Senior Activity Center (SAC)	Parking for 10-15 senior center visitors	SAC
Provide for bus parking for SAC	3 buses preferred	SAC
Provide separate drop-off area for SAC or relocate one drop-off to be more central to both SAC and The Burke	50 ft bus pull-out	SAC and Public
Potential Outside Speaker System for Civic Events	N/A	Public



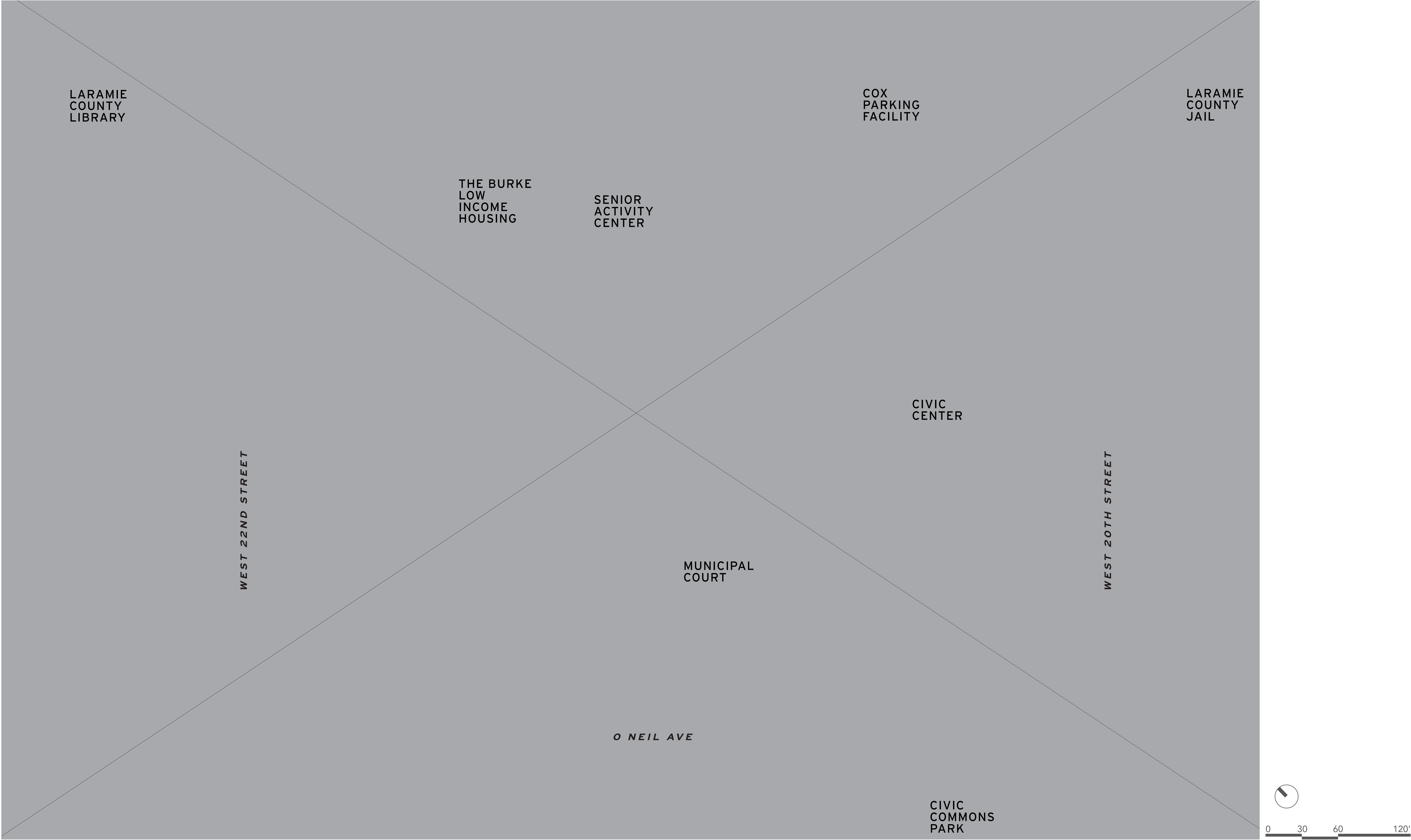


# Framework Diagram 1



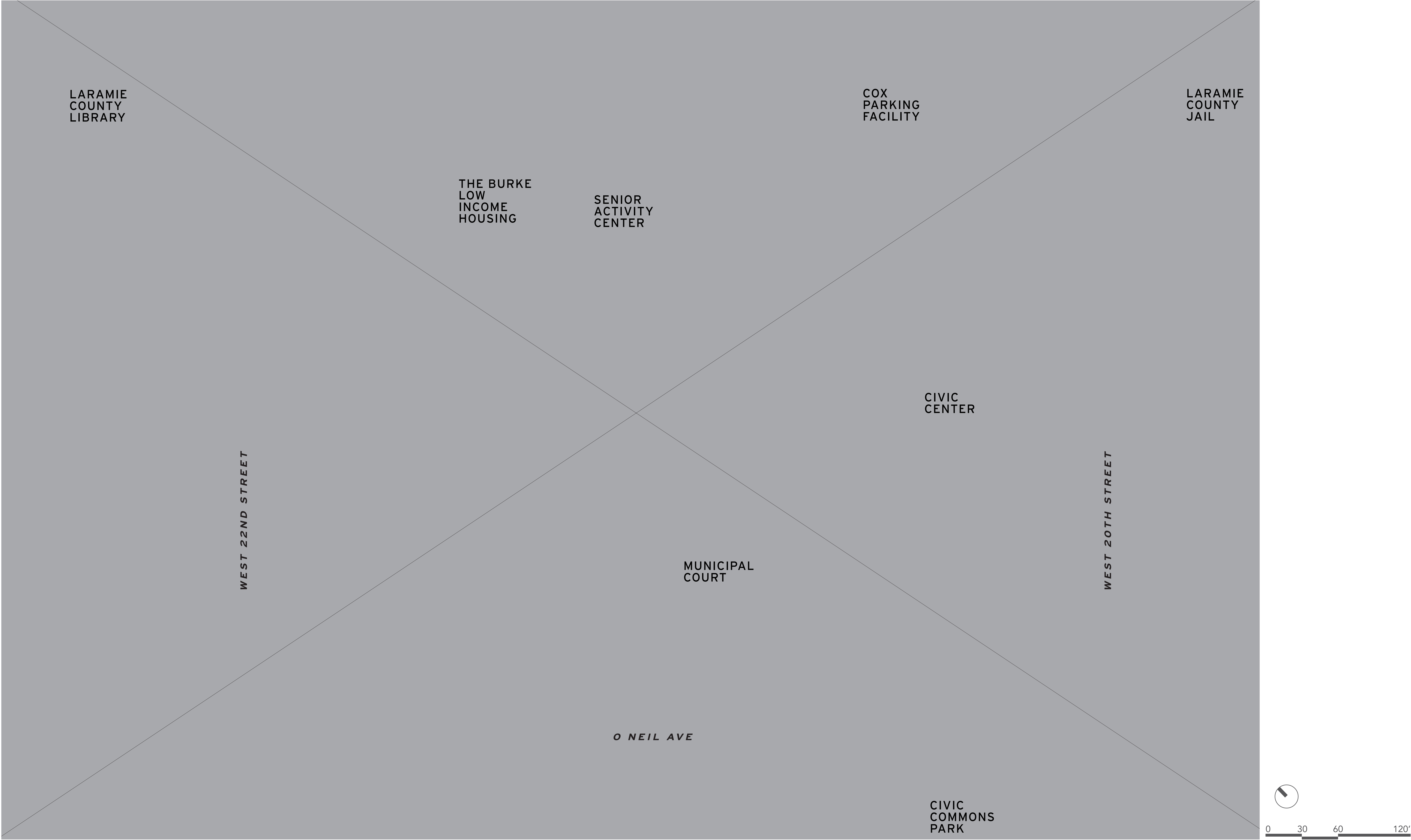


# Framework Diagram 2





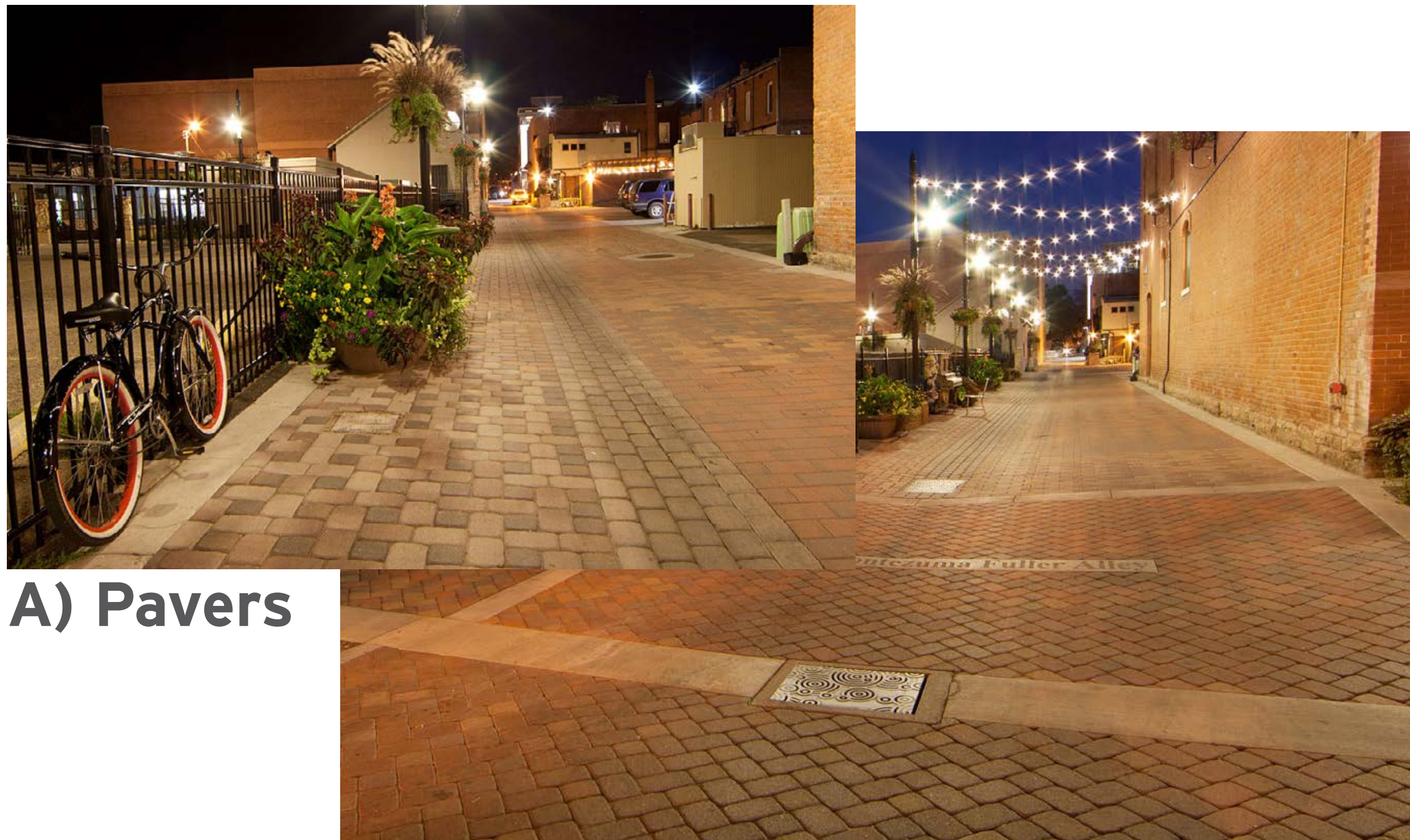
# Framework Diagram 3





# Character Survey

## 1) Promenade Materials



A) Pavers



B) Concrete sandblasting

## 2) Civic Center Beer Garden



A) Covered patio area enclosed with wall



B) Open patio enclosed with planter boxes



C) Open patio area enclosed with low fencing



# Character Survey

## 3) Site Furnishings



A) Classic | Traditional



B) Simple

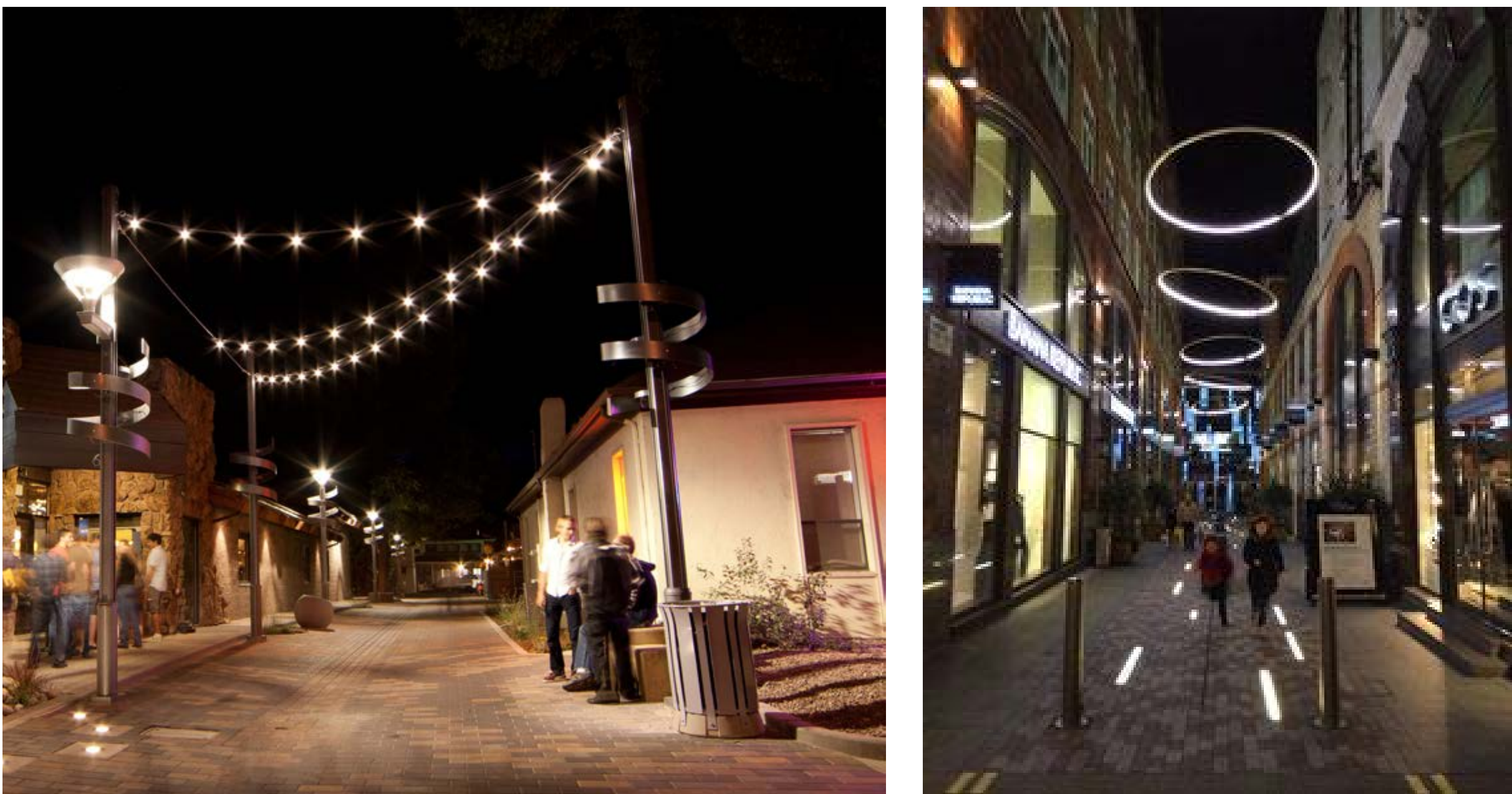


C) Contemporary

## 4) Lighting



A) Pedestrian poles



B) Overhead lighting

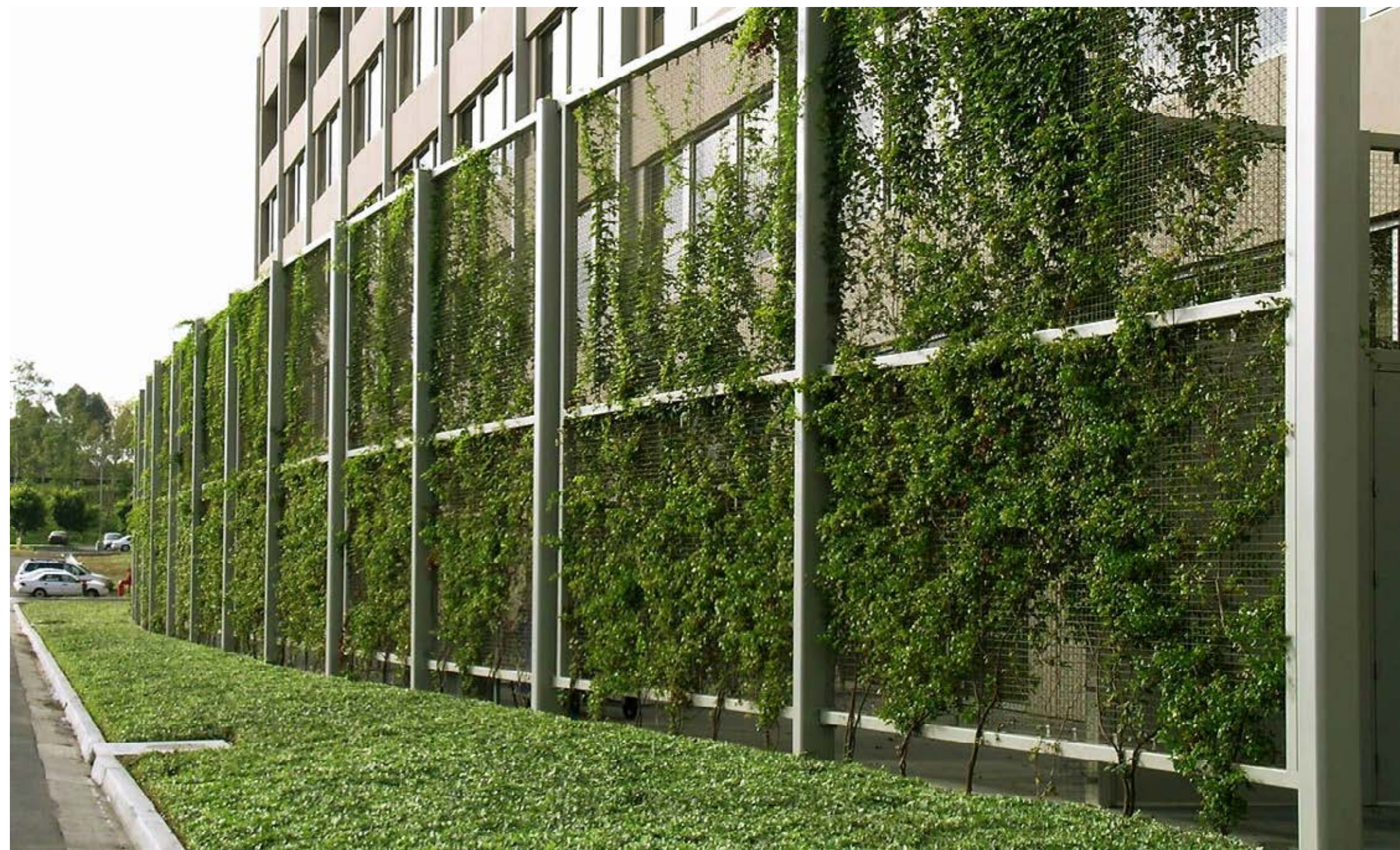


C) Artistic lighted bollards



# Character Survey

## 5) Parking Garage Screens



A) Green Screens

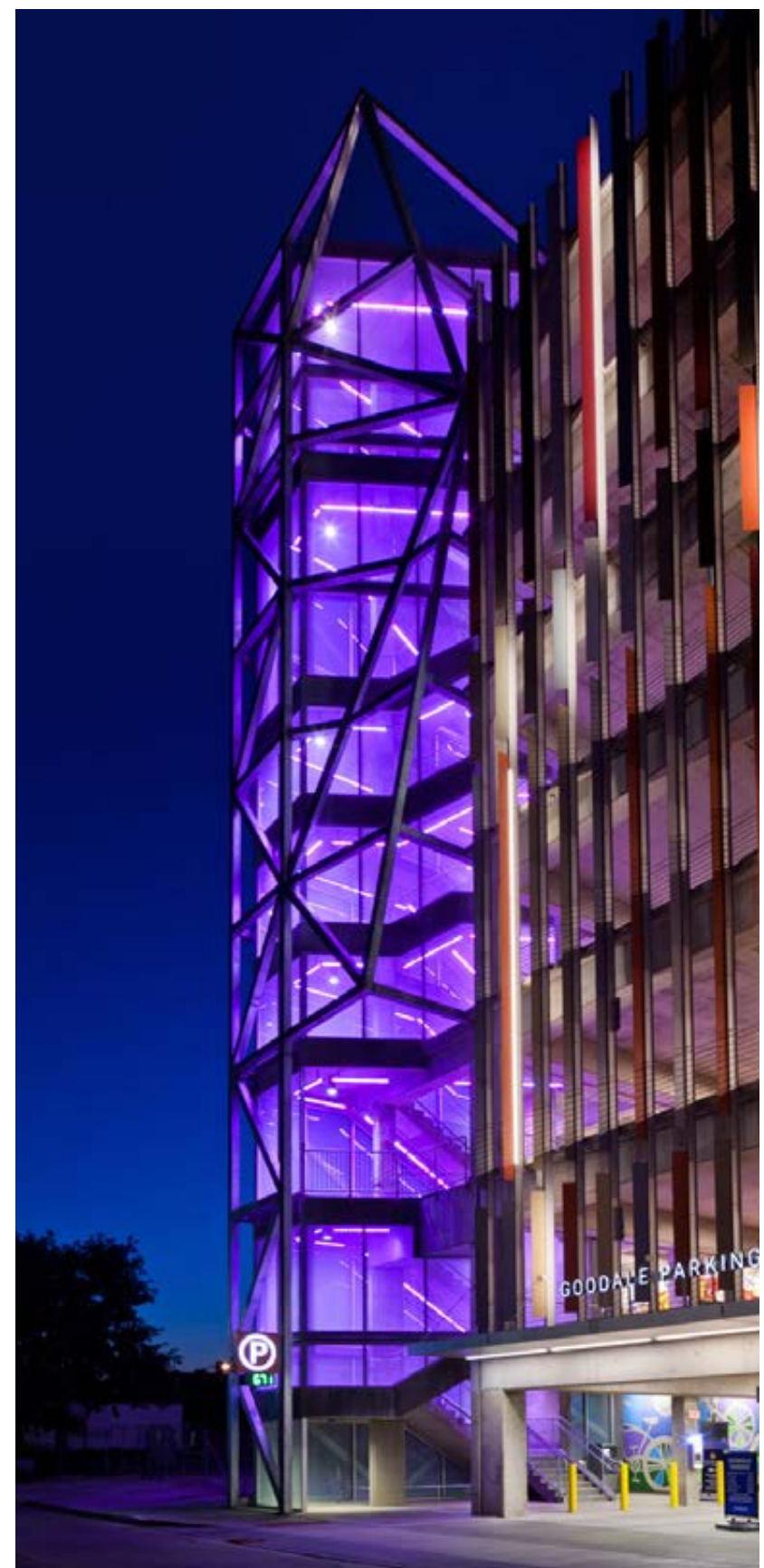


B) Perforated Metal Cladding Screens

## 6) Parking Garage Stairwell



A) Enclosed basic stairwell



B) Enclosed artistic stairwell



C) Open artistic stairwell







# Character Survey

## 8) Seatwall



A) Brick with stone cap



B) Solid stone



C) Stone veneer





# Municipal Complex Pedestrian Routing Plan

## QUESTIONS?

