

## Discussion Items:

- Pedestrian Connectivity
- Pedestrian Access and Safety
- Design Character
- Parking

The municipal complex plan shall seek to incorporate the needs of the above uses in a cohesive and well thought out plan.





- Legend**
- Civic Spine
  - Secondary Pedestrian Route
  - Saint Mary's School Route
  - Upgraded Pedestrian Crossing
  - Civic Area
  - Public Space
  - School
  - Residential
  - Study Area

The municipal complex plan should seek to create a greater connection to the nearby city and county uses.

The final plan should create a strong central spine from the Laramie County Library south to Lincolnway Ave.

Secondary east-west routes should be created to help direct pedestrians and create safe connections from uses to the east and west of the spine.







Enclosed storage buildings block visual connection from O'Neil Ave to pedestrian spine



Enclosed break area is disconnected and limits views into breezeway



Lists city employees that have passed away



Many of the companies listed are no longer in business



Could be relocated



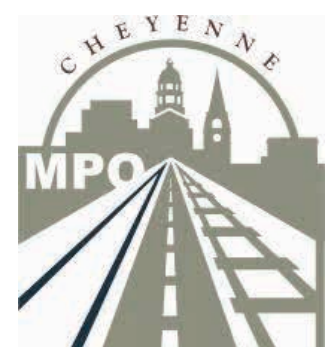
Time capsules do not currently hold any actual materials



Existing Gathering Area



Existing Drainage Pan



# Municipal Complex Pedestrian Routing Plan Site Analysis



## Legend

- Civic Spine
- Secondary Pedestrian Route
- Internal Connection
- Saint Mary's School Connection
- Opportunity Area
- Central Focal Point
- Entry Plaza
- Upgraded Pedestrian Crossing



Existing crossing across garage entry drive is not intuitive or safe



Visual connection to 20th St blocked by large mid story trees and brick columns that interrupt walkway



Visual connection from 20th St into breezeway blocked by sign



# Goal #1:

## Enhance Connections within the Municipal Complex and to Destinations Beyond

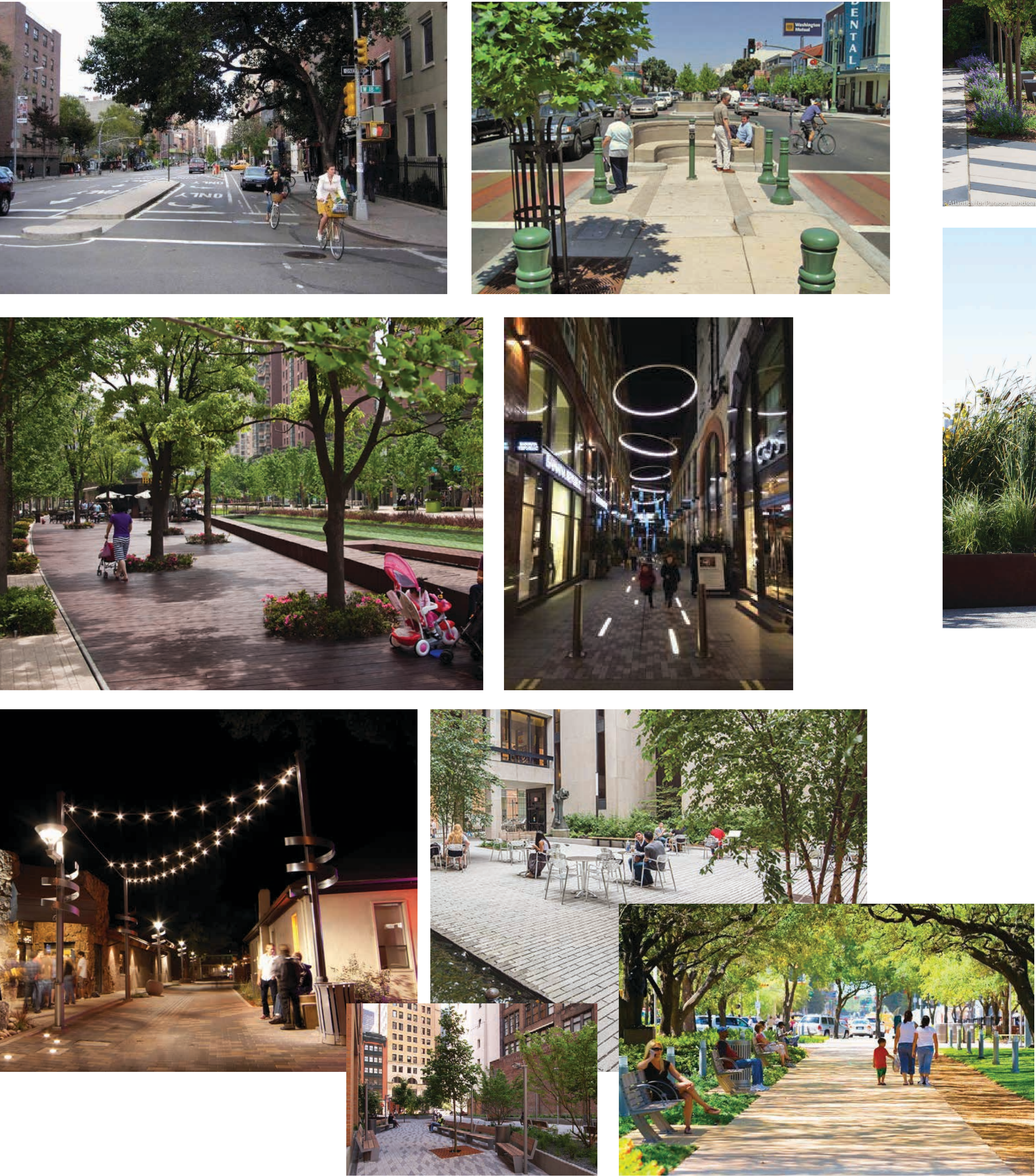
- Create clear and intuitive entry points and connections
- Create clear and intuitive connections to adjacent parking lots and structures
- Create simple and clear walkways that contribute to formal expression and character
- Provide clear wayfinding through strong pathways and origin to destination visual cues and signage
- Establish Municipal Spine along Thomes Avenue



# Goal #2:

## Increase Overall Pedestrian Safety, Comfort and Function

- Reduce pedestrian and vehicular conflict
- Create a safe and inviting evening experience for employees and visitors
- Reduce presence of middle story planting and visual clutter
- Activate and bring life to under-utilized spaces and assets



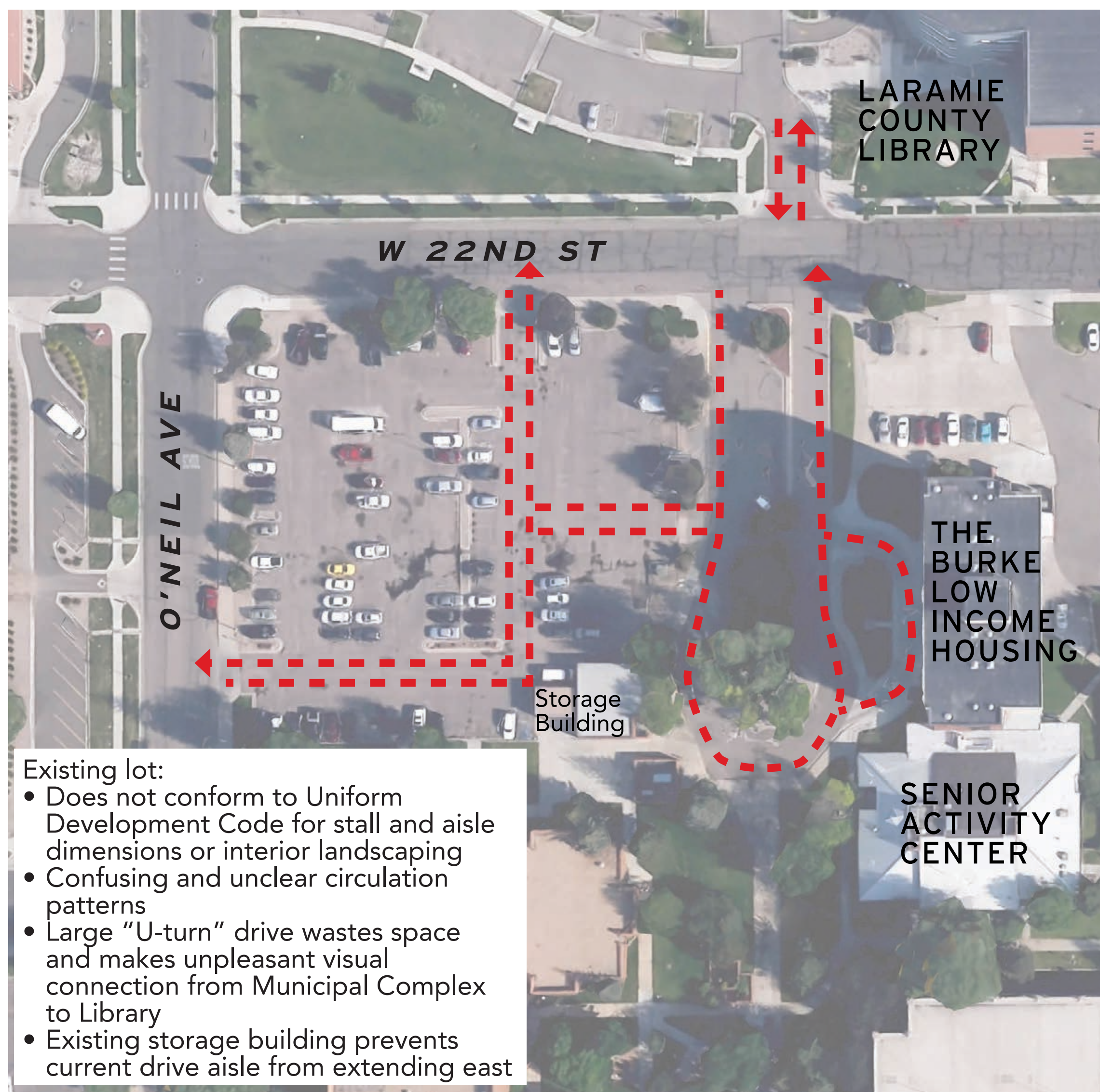
# Goal #3:

## Continue to Establish Municipal Complex Character and Identity

- Use materials of enduring quality and that communicate civic pride
- Take cues from regional influences and stakeholders input that highlight historic and valued assets







## Existing North Lot

Parking spaces: 153

## Designed to Cheyenne Uniform Development Code (UDC) Standards:

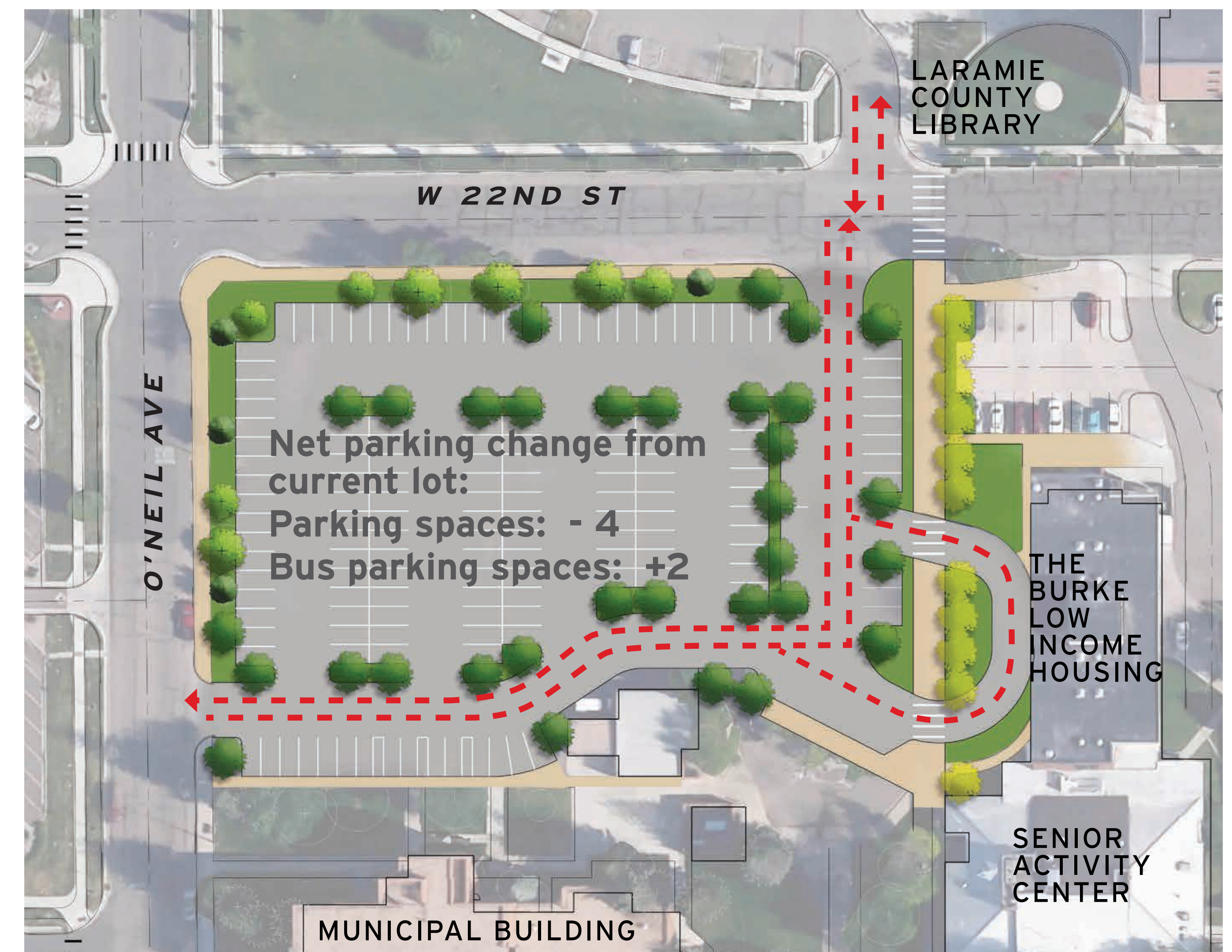
Parking spaces: 9'x18.5'

Drive aisles: 26'

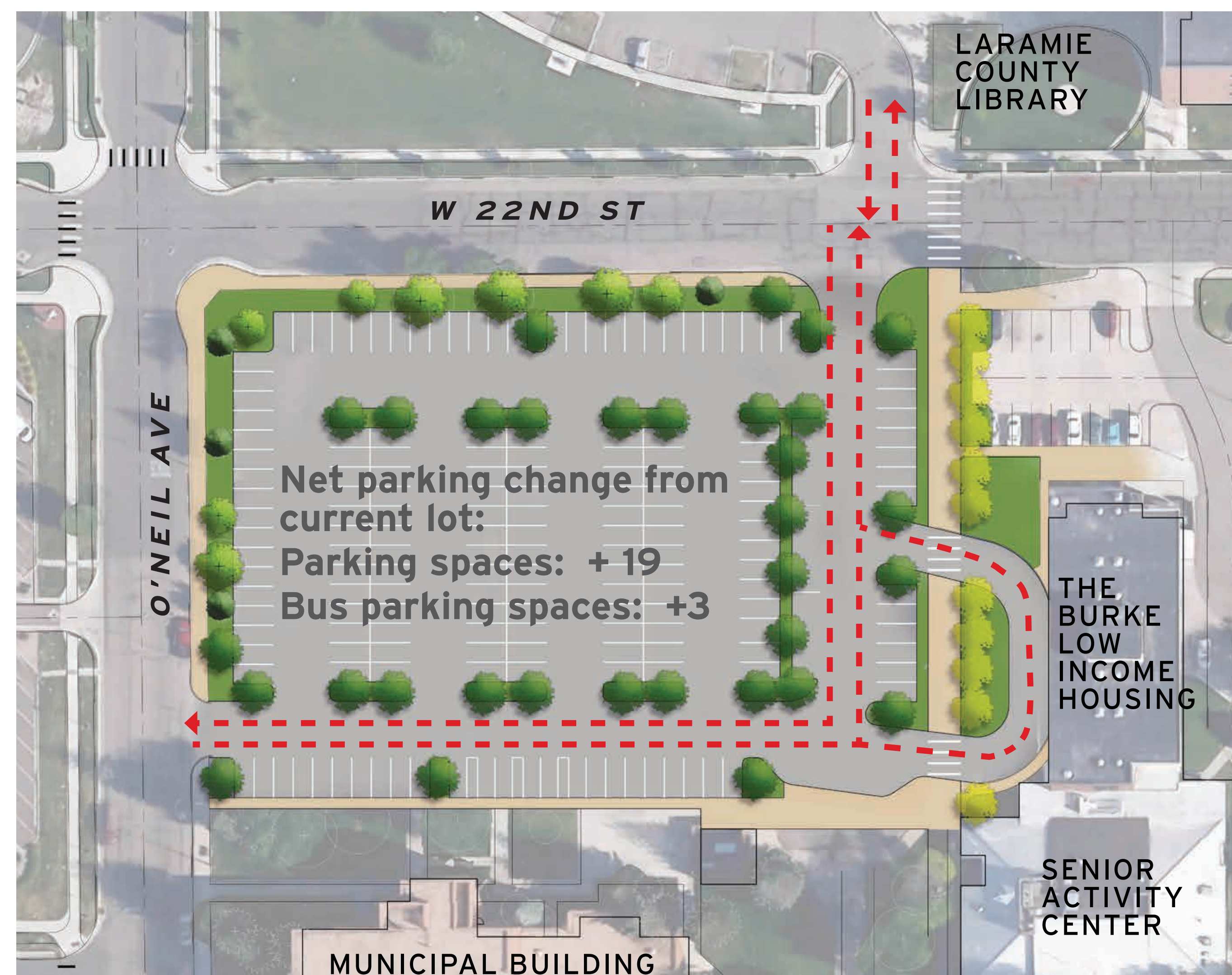
Parking Lot Internal Landscape Area: Minimum 5%

### Goals for redesigning the North Parking Lot:

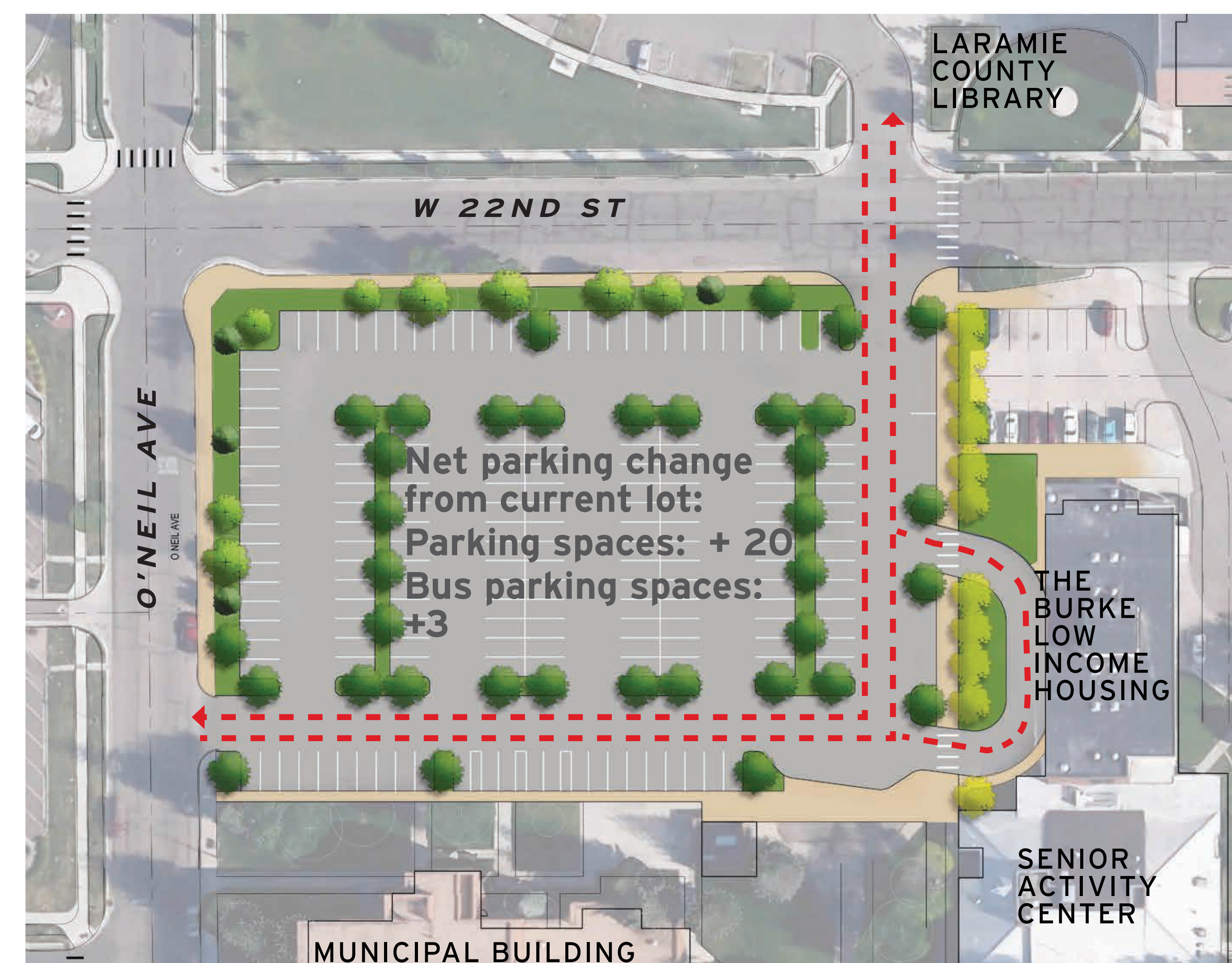
- Provide closer parking for seniors to the SAC
- Provide designated spaces for senior buses (3)
- Conform lot to UDC standards
- Clarify circulation pattern
- Provide strong pedestrian connection to from Library



## Option 1

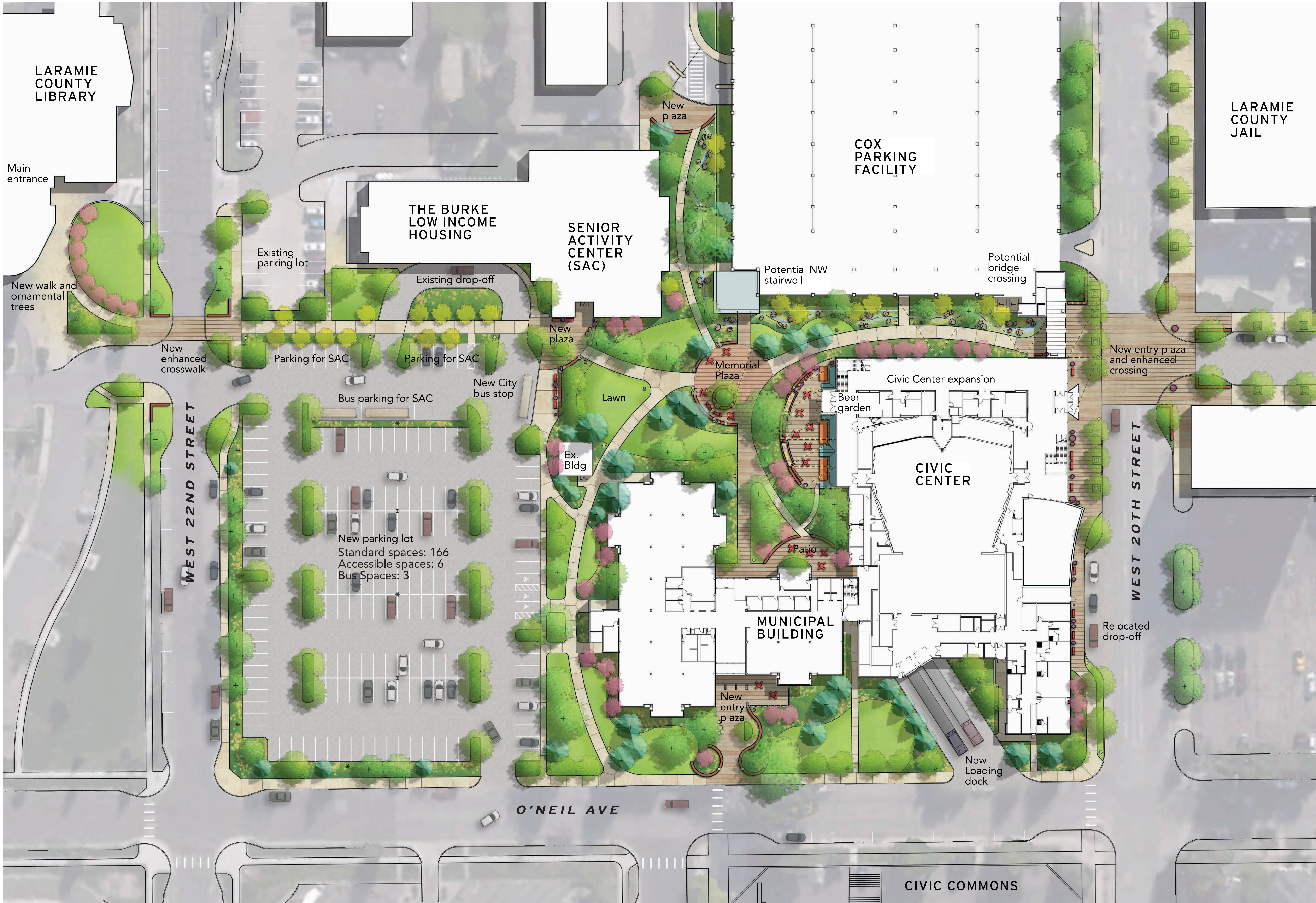


## Option 2



## Option 3

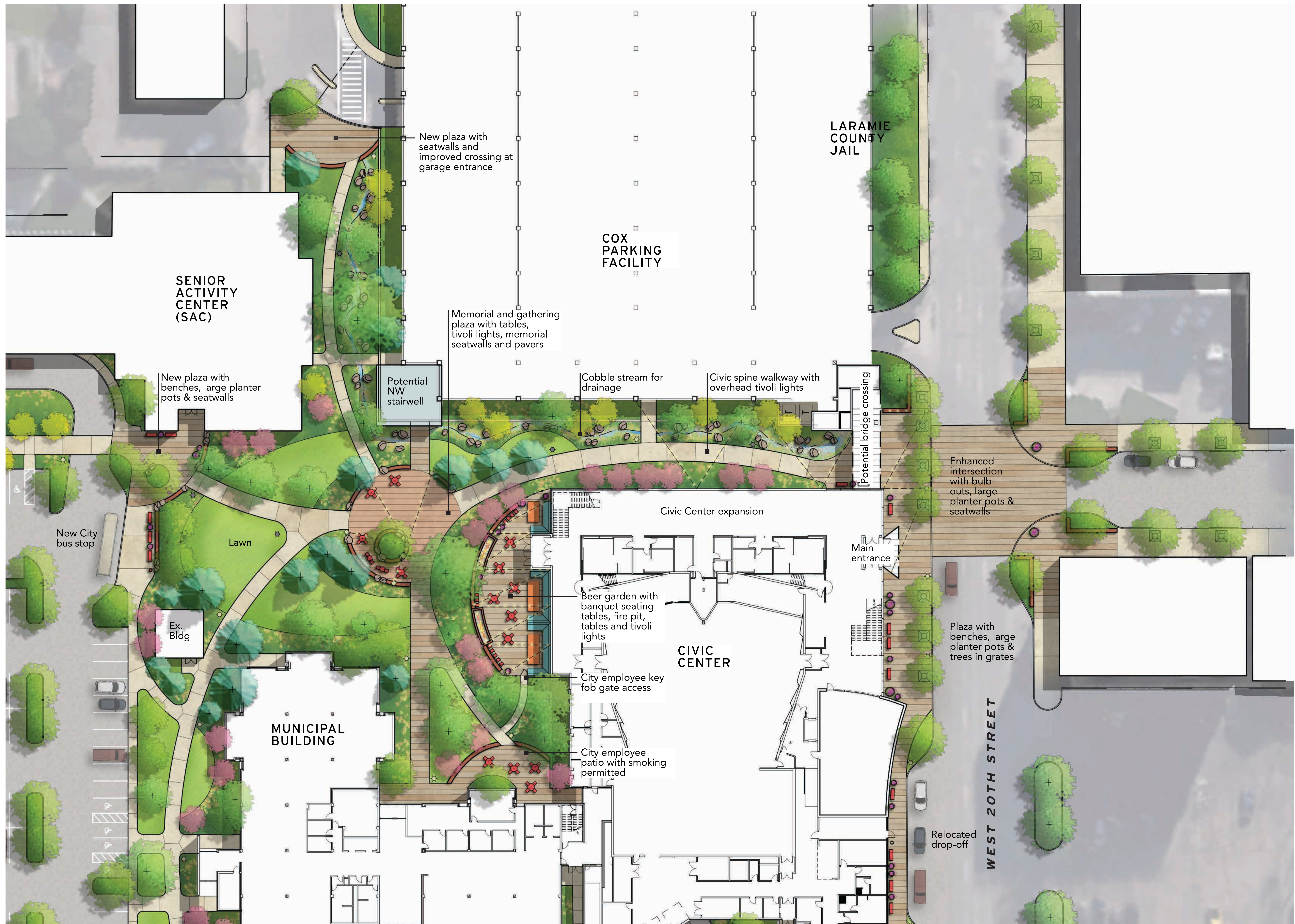




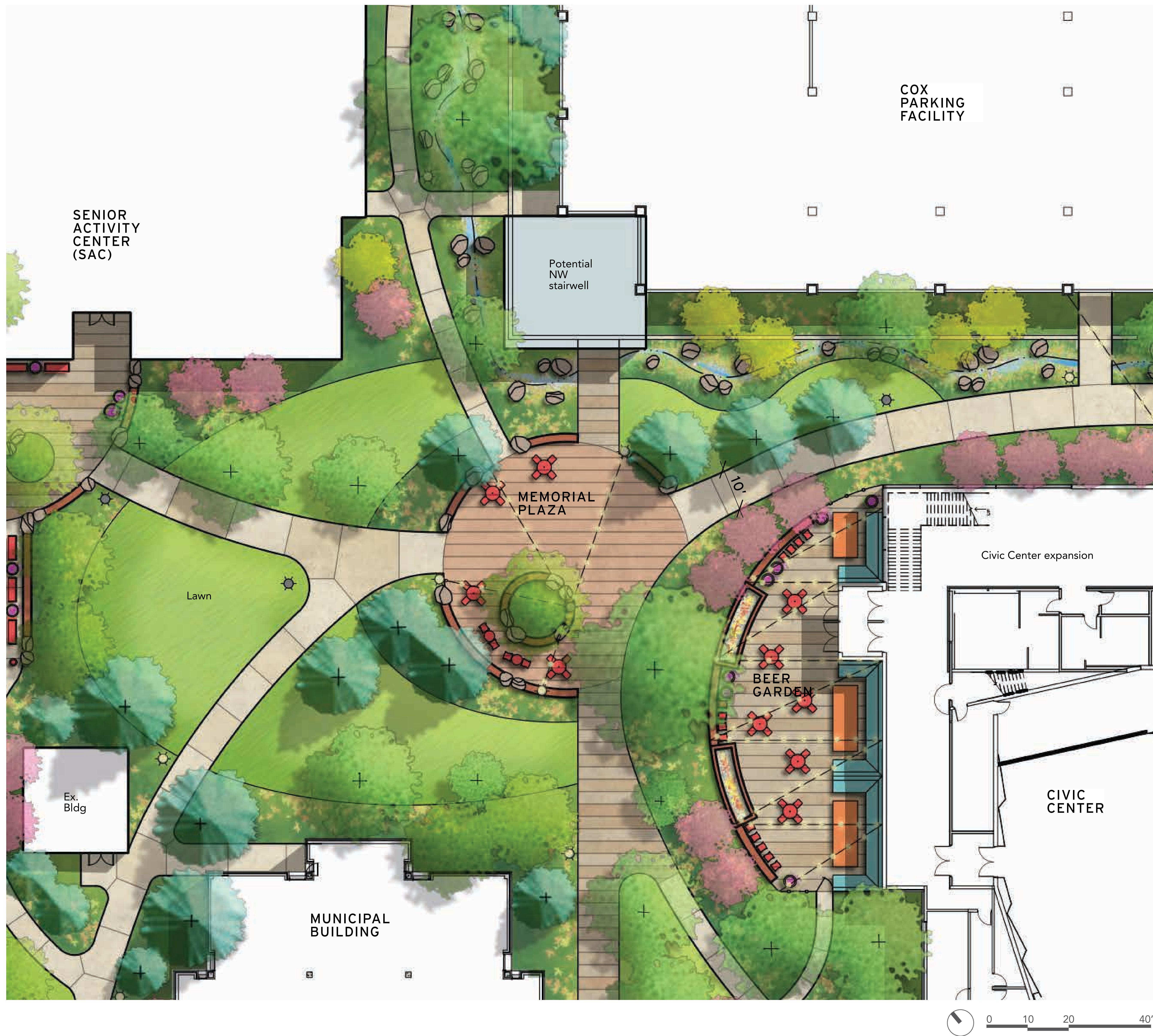
# Program Matrix

Program Element	Space Size	Used By
Central Pedestrian Walkway	10-15' wide	Public
Beer Garden/Patio Area	Seating for 25-35 people	Event
Outdoor Table Seating/Employee Break Area	Seating for 10-15 people	Employees
Small Gathering Space	20-40 people	Public
Outside Parking Garage Staircase Tower	N/A	Public
Memorial Space	Varies on approach	Public
Provide close easily accessible parking for Seniors to Senior Activity Center (SAC)	Parking for 10-15 senior center visitors	SAC
Provide for Bus Parking for SAC	3 buses preferred	SAC
Provide separate drop-off area for SAC or relocate one drop-off to be more central to both SAC and The Burke	50 ft bus pull-out	SAC and Public
Potential Outside Speaker System for Civic Events	N/A	Public







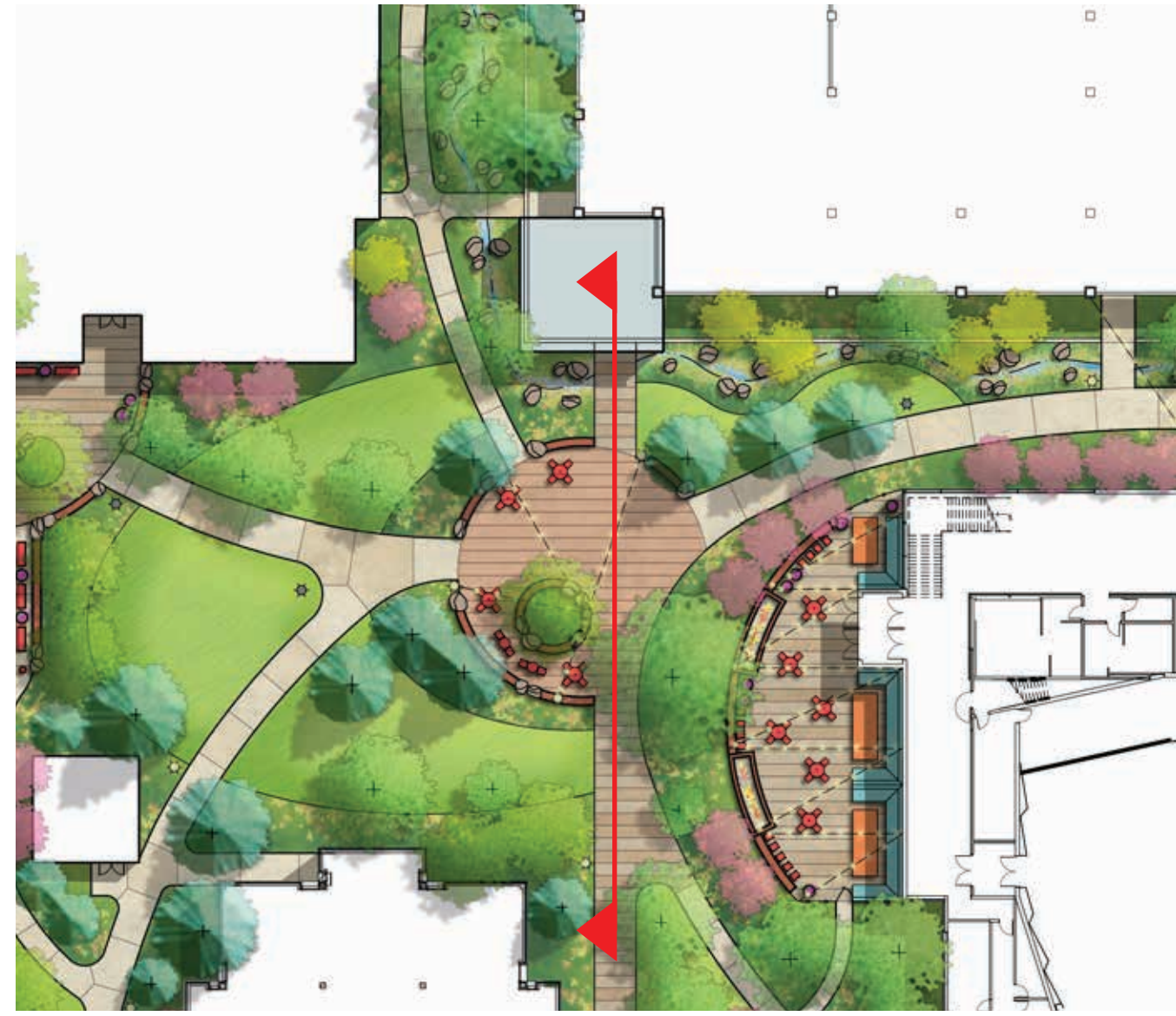


EXISTING VIETNAM VETERANS  
MEMORIAL PLAQUE

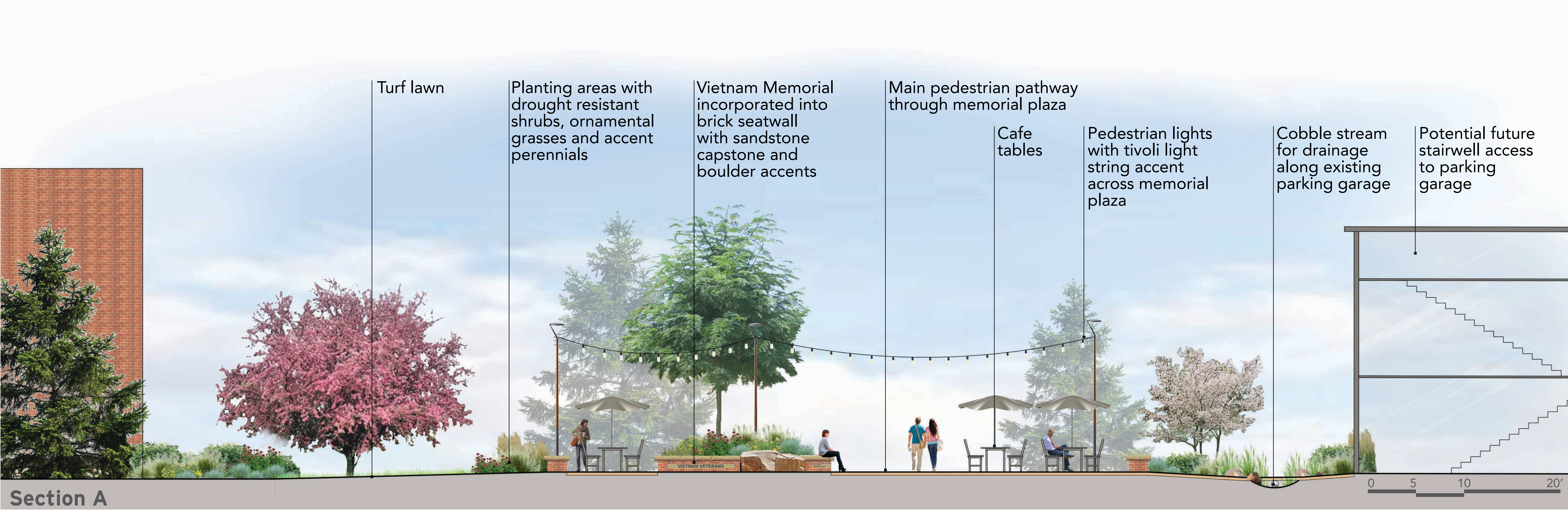


EXISTING CONSTITUTION PLAQUE -  
TO BE REMOUNTED





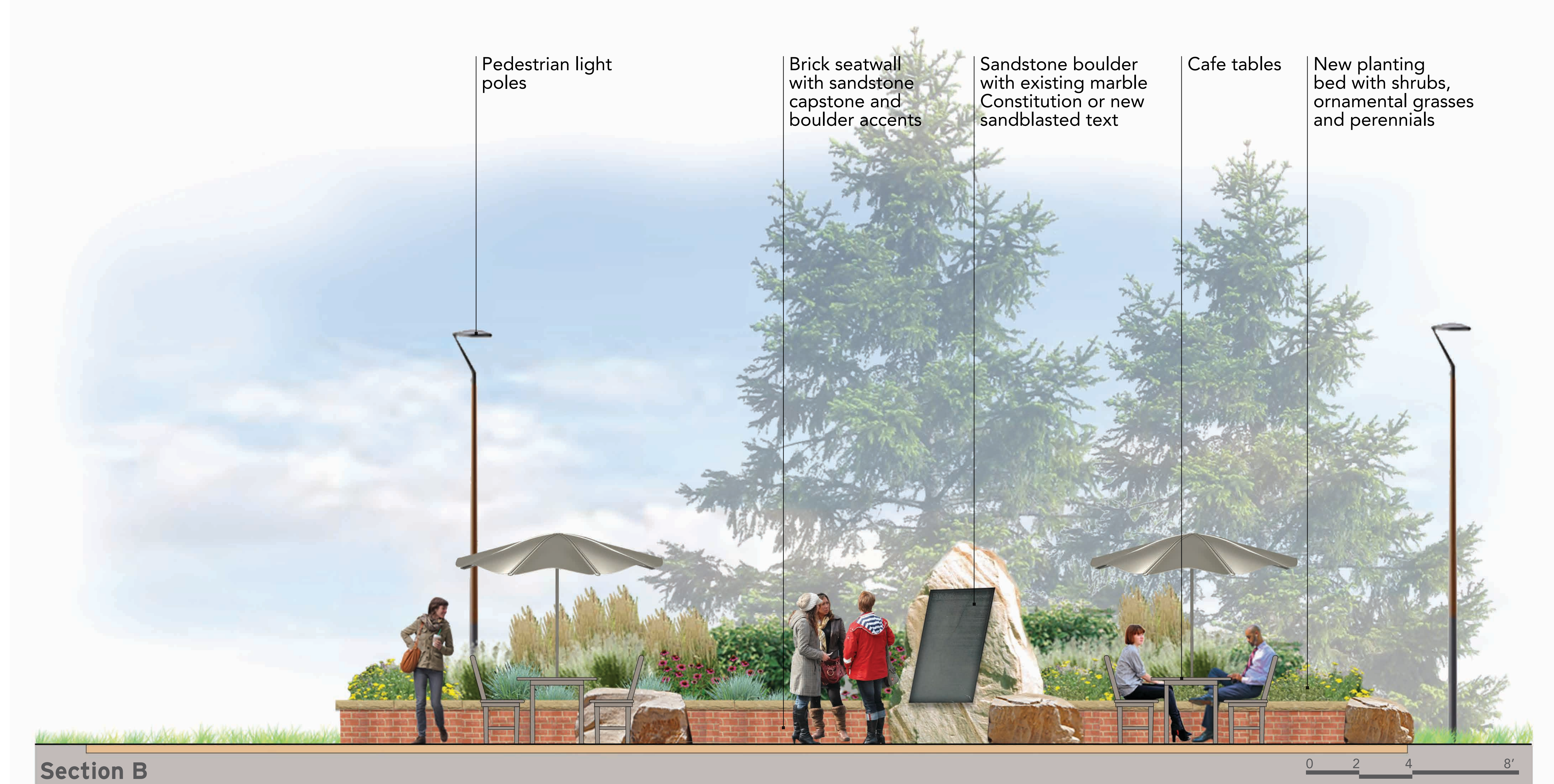
Section A Location



Section A



Section B Location



Section B



