

RAIL CROSSING  
CROSSROAD



# REED AVENUE RAIL CORRIDOR PLAN

Community Kick-off Meeting - April 17, 2017



- 1) Project introduction
- 2) Community values exercise
- 3) Leveraging infrastructure
- 4) Issues and Opportunities
  - Likes, Dislikes, and Routes
- 5) Questions / Discussion
- 6) Wrap-up / Next Steps

# Tonight's agenda



Project

# INTRODUCTION

# Video

The goal of the Reed Avenue Rail Corridor Plan is to look at opportunities to revitalize Reed Avenue as a vibrant multiuse corridor that spurs investment and redevelopment within the West Edge District.

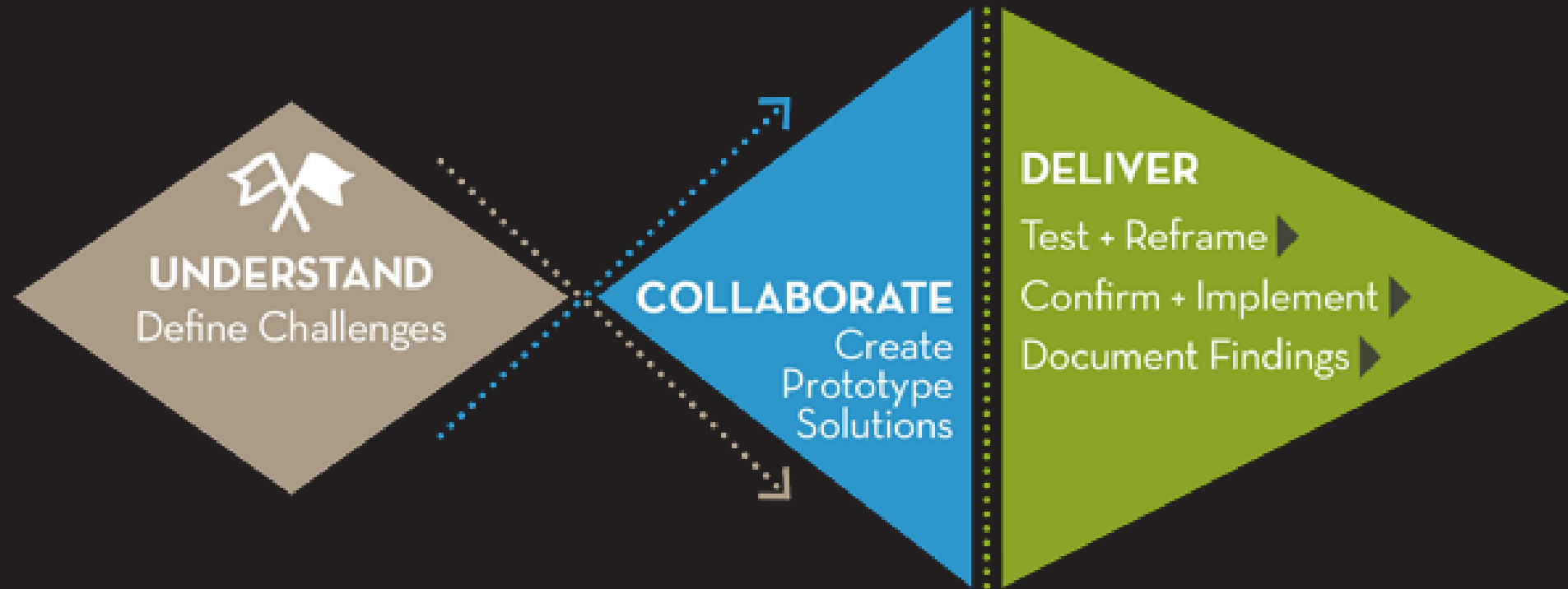
## Reed Avenue Corridor Plan



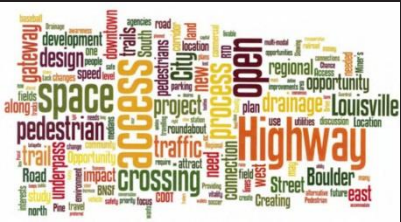


# Rail Corridor Overview





## Our Process



## PHASE 1 DELIVERABLES:

- Task 1** Project Initiation (PMC / TAC 1), Stakeholder Interviews, and Community Kick-off **Meeting #1**
- Task 2** Data Collection and Grant Criteria Outline
- Task 3** Base Mapping
- Task 4** Passenger and Freight Rail Operations Assessment
- Task 5** Urban Design and Public Space Character Inventory
- Task 6** Economic Opportunity Analysis
- Task 7** District Opportunities, Challenges, and Objectives (PMC / TAC 2)

- Task 1** Project Initiation (PMC / TAC 1), Stakeholder Interviews, and Community Kick-off Meeting #1
- Task 2** Data Collection and Grant Criteria Outline
- Task 3** Base Mapping
- Task 4** Passenger and Freight Rail Operations Assessment
- Task 5** Urban Design and Public Space Character Inventory
- Task 6** Economic Opportunity Analysis
- Task 7** District Opportunities, Challenges, and Objectives (PMC / TAC 2)

# April - May





**UNDERSTAND**  
Define Challenges



**COLLABORATE**  
Create  
Prototype  
Solutions



**DELIVER**

Test + Reframe  
Confirm + Implement  
Document Findings

## PHASE 2 DELIVERABLES:

- Task 8** Stakeholders Charrette and Community **Workshop #2**
  - ◆ Project Conceptual Designs
  - ◆ Initial Cost Estimates
- Task 9** Test and Refine Alternative Design Concepts
- Task 10** Economic and Fiscal Impact Assessment

**June - July**

**UNDERSTAND**  
Define Challenges

**COLLABORATE**  
Create  
Prototype  
Solutions

**DELIVER**

Test + Reframe ▶  
Confirm + Implement ▶  
Document Findings ▶

**PHASE 3 DELIVERABLES:**

- Task 11** Stakeholder Follow-up Discussions and Implementation Workshop (PMC / TAC 3)
- Task 12** Utility Action Plan
- Task 13** Railroad Coordination Action Plan
- Task 14** Preferred Solution Community Workshop #3
- Task 15** Refine Corridor Design Concepts and Guidelines
- Task 16** Prioritization and Cost Estimates
- Task 17** Draft (PMC / TAC 4) and Final Documentation



**August - October**

The objective of tonight's workshop is to understand the **values** and document **issues** that need to be studied to assist the City in developing the **Reed Avenue Corridor Plan**.

**Meeting purpose**



Values

EXERCISE





# Community Values

## Instructions

- *Everyone should have received THREE post-it notes*
- *Write down ONE thing that you value about Reed Avenue and, or the West Edge District on EACH Post-It.*
- *Place each of your Post-It notes on the wall.*

## Notes

- *It's okay (and encouraged) to chat with your neighbors about what each of you value.*
- *At the wall, group your values with similar ones.*

## Time

- *Fifteen Minutes*

# Community Values

Leveraging

INFRASTRUCTURE







Leveraging infrastructure



Savannah, GA



Irvine, CA

Leveraging infrastructure





Savannah, GA



Irvine, CA

Leveraging infrastructure



Leveraging infrastructure





Leveraging infrastructure



Leveraging infrastructure





Reed Avenue





Character





Connectivity





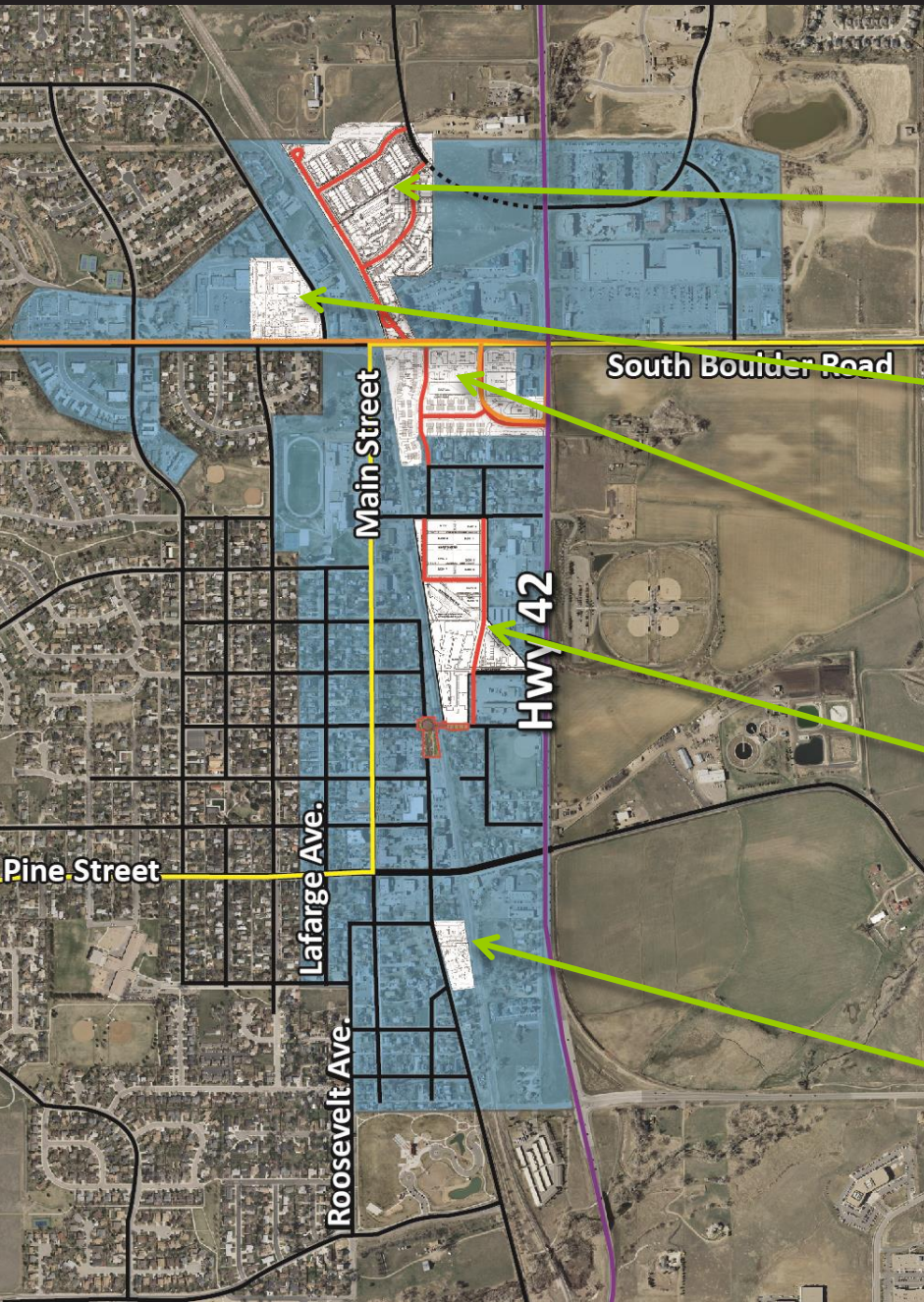
Opportunities





Louisville, CO





Steel Ranch South  
228 Apartments & 58 Townhomes

Center Court  
32,000 SF Retail & 111 Apartments

Coal Creek  
30,000 sf Retail & 58 Townhomes

Downtown East Louisville  
12,00 sf retail, 55 Townhomes, &  
194 Apartments

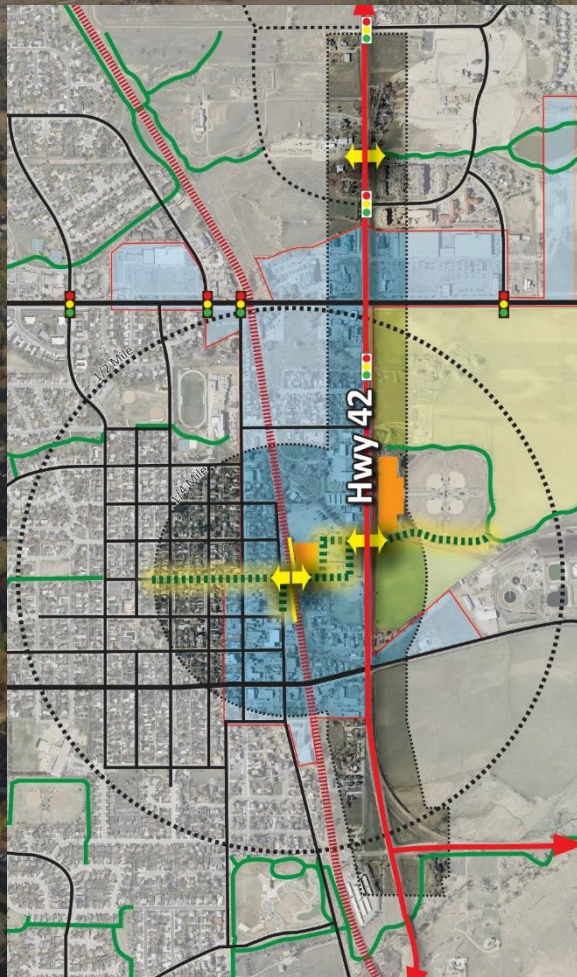
Historic Grain Elevator  
*Redevelopment Historic Landmark*  
& 67,000 sf commercial





Louisville, CO  
Gateway Underpass





Louisville, CO – Gateway Underpass









City of  
Louisville

# South St. Underpass Construction

SPRING/SUMMER 2017  
[WWW.LOUISVILLECO.GOV](http://WWW.LOUISVILLECO.GOV)









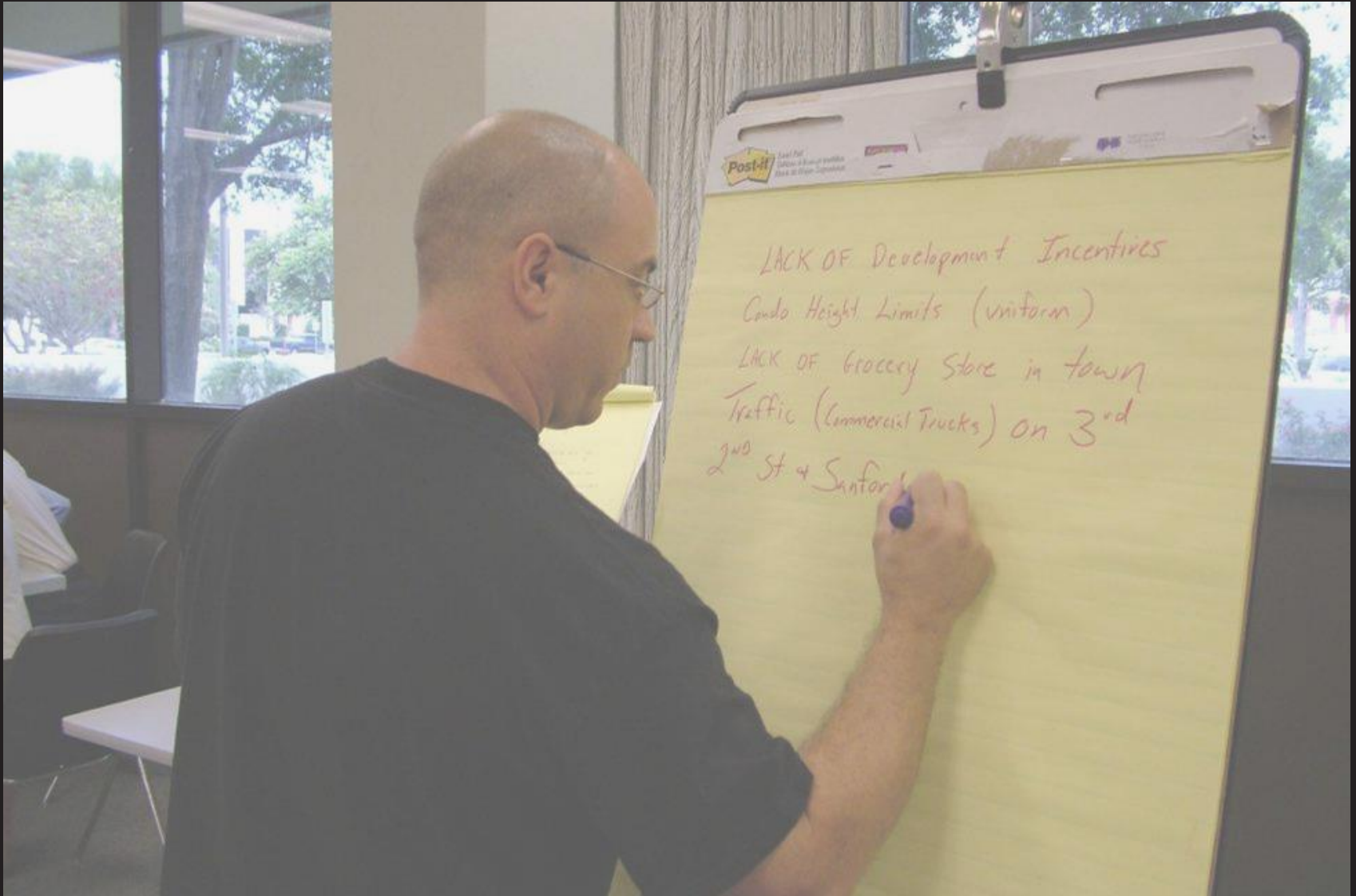
# Values EXERCISE (Results)

# Issues and Opportunities

# LIKES, DISLIKES, & ROUTES



Map your **likes, dislikes, and routes**



Define your **Issues and Opportunities**





# Vote on the Issues and Opportunities



# Instructions

- Everyone should have received:
  - THREE **red dots**
  - FOUR **green dots**
- Take the **red dots** and place them on the three areas of the corridor, or west edge district that need the most improvement.
- Take THREE **green dots** and place them on the three best parts of the corridor, or west edge district.
- Take your remaining **green dot** and vote for the single most important area needing improvement.
- Finally, go to the Route map and draw you most frequent route through the district.

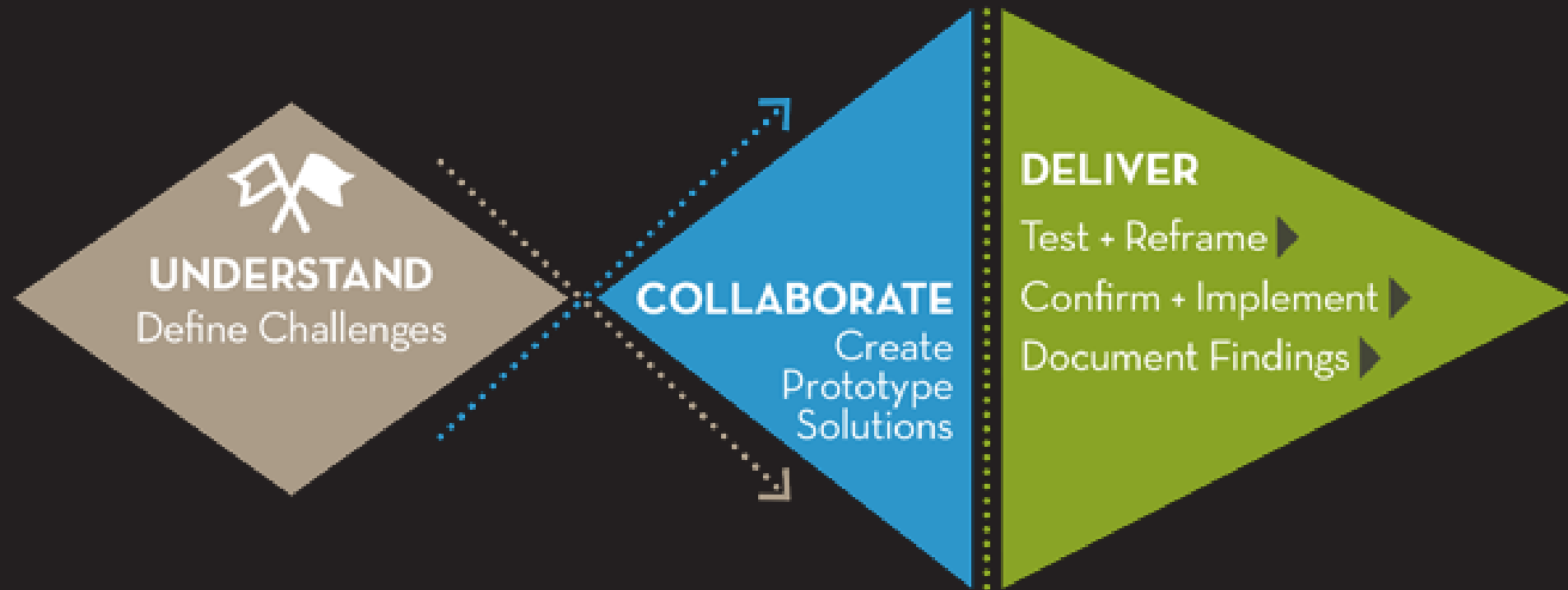
## Community Values

# Questions and Discussion





# Next Steps



# Community Design Charrette

## June 20-22