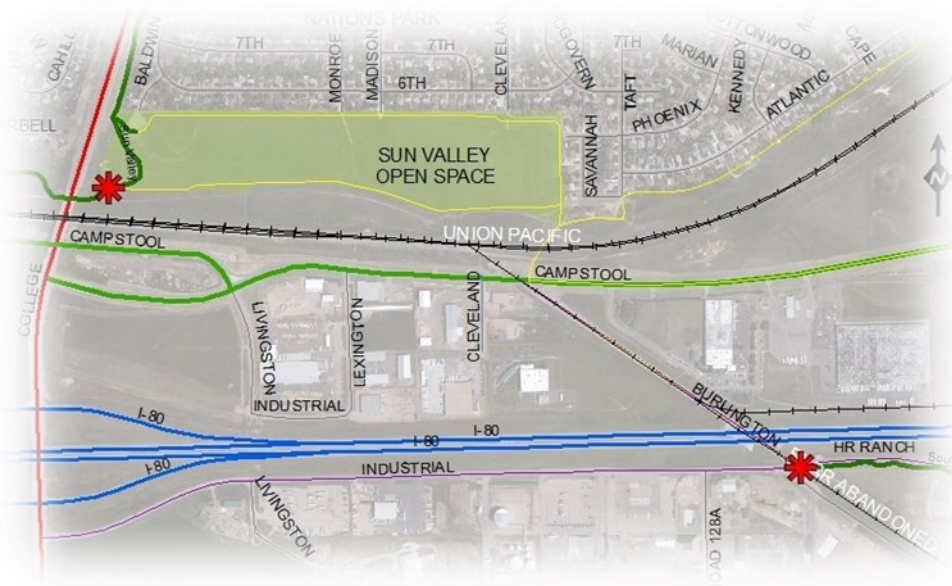




SOUTHEAST GREENWAY TRAILS CONNECTOR

LOCATION MAP



OBJECTIVES

To propose a feasible way to connect the existing Greenways, while safely crossing the railroad tracks and provide opportunities for additional future trail connections.



PROJECT INFORMATION

A priority by both the City and Greenway users is a grade separated connector across the Union Pacific Railroad tracks to existing and planned Greenway facilities near Campstool Road, Burlington Trail and HR Ranch Road. A preferred crossing has been selected adjacent to the College Drive bridge. This location was selected because:

- lower cost than other options
- provides the safest crossing of Campstool Road by bringing users to a signalized intersection
- provides both a recreational Greenway connection and access to businesses along the south side of Campstool Road

PROJECT STEPS

Public Meeting #1

Thursday June 15, 2017

Plan Preparation

Summer 2017

Public Meeting #2

Wed. Sept. 27, 2017

Completion

Winter 2017



Find us Online:

www.plancheyenne.org

For more information contact:

Nancy Olson - 307-638-4366 or

nolson@cheyennempo.org