



# TRANSPORTATION IMPROVEMENT PROGRAM

Annual and Four Year  
Element for Fiscal Years  
*2016 - 2019*



Prepared by:  
The Cheyenne Metropolitan Planning Organization

In cooperation with:  
The Wyoming Department of Transportation  
The U. S. Department of Transportation  
The Federal Highway Administration  
The Federal Transit Administration

*Adopted by the Policy Committee on June 24, 2015*

# Table of Contents

<b>I.</b>	<b>Introduction.....</b>	<b>2</b>
	Background.....	2
	MAP-21.....	2
<b>II.</b>	<b>The Transportation Improvement Program.....</b>	<b>4</b>
	Introduction.....	4
	TIP Contents.....	4
	Project Selection.....	5
	Approval.....	6
<b>III.</b>	<b>Recommended Projects and Programs.....</b>	<b>7</b>
	<b>Table 1 – FY '15 Projects Beginning During the Spring and Summer of 2015.....</b>	<b>8</b>
	<b>Table 2 – FY '16 Highest Priority Federally Funded Projects for.....</b>	<b>9</b>
	the Cheyenne Urbanized Area	
	<b>Table 3 – FY '16 Highest Priority State and Local Funded Projects for the.....</b>	<b>9</b>
	Cheyenne Urban Area	
	<b>Table 4 – FY '16 - '19 Project Listing.....</b>	<b>10</b>
	City of Cheyenne	
	Cheyenne Transit Program	
	Laramie County	
	Cheyenne Airport Board	
	Wyoming Department of Transportation	
	Board of Public Utilities	
	<b>Table 5 – Estimate of Available Funds for FY '16- '19Transportation Projects.....</b>	<b>36</b>
<b>VI.</b>	<b>Pavement Management System.....</b>	<b>37</b>
	<b>Table 6 - Calendar Year 2015 City Pavement Programs.....</b>	<b>38</b>
	<b>Appendix A: Funding Definitions.....</b>	<b>39</b>
	<b>Appendix B: Maps.....</b>	<b>40</b>
	<b>Appendix C: Certification Statement.....</b>	<b>41</b>

# 1 - Introduction

## Background

The Cheyenne Metropolitan Planning Organization (MPO) was established on April 27, 1965 and is responsible for ensuring that federal funds for transportation projects in the urban area are spent in compliance with local government development guidelines and federal regulations.

The Cheyenne MPO was designated for transportation planning purposes by the governor of Wyoming in 1981. The MPO is responsible for developing transportation policies and coordinating the various federal, state, and local agencies involved in long-range transportation planning and project development. The geographic area the MPO is involved with is defined by the Metropolitan Planning Boundary which is the Cheyenne areas twenty-five year socioeconomic growth area.

A comprehensive, cooperative and continuing (3C) planning process is necessary for the Cheyenne MPO to plan for Cheyenne's future transportation needs. A major part of this process involves citizens' input and a three-committee format that produces an ongoing attempt to satisfy present and future travel demands, as well as to provide transportation needs for a growing population and economic base.

The policies for the Cheyenne MPO are established through the *Citizens' Transportation Advisory Committee*, *Technical Committee*, and *Policy Committee*. These committees also help decide how the Federal Planning Funds (PL), 5303 Transit Planning Funds, and Federal Surface Transportation-Urban Program (STP-U) Funds for construction will be spent within the urban area. The committees, as required, develop this Transportation Improvement Program (TIP) to facilitate the "3C" planning process.

## Moving Ahead for Progress in the 21<sup>st</sup> Century Act (MAP-21)

On July 6, 2012, President Obama signed into law P.L. 112-141, the Moving Ahead for Progress in the 21st Century Act (MAP-21). Funding surface transportation programs at over \$105 billion for fiscal years (FY) 2013 and 2014, MAP-21 is the first long-term highway authorization enacted since 2005. MAP-21 represents a milestone for the U.S. economy – it provides needed funds and, more importantly, it transforms the policy and programmatic framework for investments to guide the growth and development of the country's vital transportation infrastructure. On May 29, 2015, President Obama signed a 2-month highway funding extension. This will provide infrastructure funding through July 2015. This is the 33rd funding patch since 2008.

MAP-21 creates a streamlined, performance-based, and multimodal program to address the many challenges facing the U.S. transportation system. These challenges include improving

safety, maintaining infrastructure condition, reducing traffic congestion, improving efficiency of the system and freight movement, protecting the environment, and reducing delays in project delivery.

MAP-21 builds on and refines many of the highway, transit, bike, and pedestrian programs and policies established in 1991 through the Intermodal Surface Transportation Efficiency Act (ISTEA), and continued through subsequent legislation including TEA-21 in 1998 and SAFETEA-LU in 2005).

Major objectives of the MAP-21 legislation include:

- ***Strengthening America's highways*** by establishing a performance basis to preserve and improve the National Highway Performance Program.
- ***Establishing a performance-based program*** to make more efficient use of Federal transportation funds and increase accountability of Federal highway programs. Performance goals are related to safety, infrastructure condition, congestion reduction, system reliability, freight movement and economic vitality, environmental sustainability, and reduced project delivery delays.
- ***Creating jobs and supporting economic growth*** through innovative financing, encouraging private sector investment, and investing in infrastructure improvements.
- ***Supporting the Department of Transportation's aggressive safety agenda*** by doubling funding for infrastructure safety, working to reduce highway fatalities and distracted driving, and improving transit and motor carrier safety.
- ***Streamlining Federal highway transportation programs*** by creating a smaller number of broader core programs and eliminating most current discretionary programs.
- ***Accelerating project delivery and promoting innovation*** in the planning, design, engineering, construction and financing of transportation projects. These MAP-21 changes are based on FHWA's "Every Day Counts" initiative, and are intended to speed up the project delivery process, save time and money for individuals and businesses, and yield broad nationwide benefits.

## 2 - The Transportation Improvement Program

### Introduction

A Transportation Improvement Program (TIP) is a staged, multi-year program of capital transportation improvements including all modes of transportation. The TIP must be updated at least every four years and cover a period of four years. The TIP must include a priority list of projects and at a minimum, group the projects by priority for each year.

The Metropolitan Planning Organization and the State Transportation Department must cooperate in the selection of each project and in the development of the TIP. The frequency and cycle for updating the TIP must be compatible with the State Transportation Improvement Program (STIP) development and approval process. Once approved by the Policy Committee, and upon the approval of the Governor or the Governor's designee, the TIP becomes part of the STIP. Although metropolitan TIPs do not need to be approved by the Federal Highway Administration (FHWA) or the Federal Transit Administration (FTA), copies of any new or amended TIPs must be provided to each agency.

In developing the program, the Metropolitan Planning Organization shall provide citizens, affected public agencies, representatives of transportation agency employees, other affected employee representatives, private providers of transportation, and other interested parties with a reasonable opportunity to comment on the proposed program.

The TIP must be financially constrained by year and include a financial plan that demonstrates which projects can be implemented using current revenue sources. The financial plan shall be developed by the MPO in cooperation with the State and the Transit operator. The State is required to provide the MPO with estimates of available Federal and State funds which may be utilized in developing the TIP financial plan.

### TIP Contents

The TIP is a "living document" and can be amended with the approval of the Policy Committee. The TIP focuses on projects that will require four years or fewer to implement. Within the four year span, projects may be delayed or accelerated according to present needs. This flexibility enhances coordination among local and State agencies. Coordination among related projects saves money and decreases disruptions to the transportation system. The TIP is evaluated annually and an annual increment of improvements is added to maintain its full multi-year program.

The TIP does not constitute an appropriation of funds, nor replace the normal funding programs. The TIP is intended to serve as a fiscal management tool to assist State and local agencies with matching needs to resources. All federal projects eligible for placement in the TIP should be consistent with the approved Long Range Master Transportation Plan. An

update to the Cheyenne MPO's comprehensive plan, known as *PlanCheyenne*, was adopted and approved in April, 2014. Federally funded projects found in this TIP originated from PlanCheyenne.

The TIP should contain the following basic elements:

1. All transportation projects, or identified phases of a project, including pedestrian walkways, bicycle transportation facilities, and transportation enhancement projects within the metropolitan planning area proposed for funding under Title 23, U.S.C., and the Federal Transit Act.
2. Projects that are consistent with the adopted and approved Master Transportation Plan.
3. All regionally significant transportation projects for which an FHWA or FTA approval is required, whether or not the projects are to be funded with title 23, U.S.C., or Federal Transit Act funds.

The projects listed in the TIP should also include: a sufficient description of the project; a cost estimate; the amount of federal funds proposed to be obligated during each program year; and identification of the agencies responsible for carrying out the project.

*NOTE: Private developments occasionally have infrastructure and transportation improvements imposed upon them to mitigate their impacts to the public transportation system. The TIP does not include those projects.*

## Project Selection

The evaluation of candidate improvement projects, and the selection of those to be included in the FY '16-'19 TIP are based on the following considerations:

**1 - Project Criterion:** Projects listed in this four-year improvement program are chosen, ideally, using the MAP-21 guiding principles outlined in the Introduction. Through the established planning process a twenty-five year master transportation plan is adopted. This plan prioritizes proposed transportation projects whose completion is desired within a twenty-five year period with regard to financial constraints. In order for federally funded projects to be listed in a TIP they must first be established in the Master Transportation Plan, and for the most part given a high priority.

**2 - Prioritization of Projects:** Once validated as a viable transportation project through the Master Transportation Plan process, the proposed projects are prioritized to assess their relative importance and to determine the appropriate year for project initiation. Considerations are given to compatibility with adopted community goals and objectives and expressed level of need.



New projects listed in the TIP were selected and prioritized by the local agencies by their own selection process. Local projects are further prioritized by the 5<sup>th</sup> and 6<sup>th</sup> Penny Optional Sales Tax public selection process. Projects which are already programmed were not prioritized along with those that are not currently programmed. (Recommended prioritizations of roadways are only a suggestion. Other factors such as funding availability, coordination with other agencies, and political needs may alter when projects actually commence).

**3 - Economic Feasibility of Projects:** This phase of the process consists of an evaluation of each project's cost relative to the community's total transportation needs and resources. The financial plan demonstrates what funding sources will be utilized, and whether there are enough funds allocated to secure all selected projects.

**4 - Public Input:** Cheyenne MPO assures that the citizens in the Cheyenne Area, affected public agencies, representatives of transportation agency employees, private providers of transportation, and other interested parties will have an opportunity to comment on the proposed TIP before adoption. The Cheyenne MPO Technical Committee approved the proposed TIP at their regular meeting held May 20, 2015. The Cheyenne MPO Citizens' Advisory Committee approved the proposed TIP at their regular meeting held May 21, 2015. The TIP was presented to the City Planning Commission on June 15 for the official advertised public input. The projects were presented to County Planning Commission on June 25. An advertisement for the TIP availability and presentation to the City and County Planning Commission and approval at the Policy Committee was placed in the Wyoming Tribune Eagle on June 10 and 14. In addition, the Cheyenne Transit Program held their own Public Meeting on December 8, 2014 to discuss their FY '13-'14 FTA Grant application and three year program. At the Planning Commission meetings held on June 15 and 25, the Planning Commission members had general questions on a few topics, but no major issues were raised.

**5 - Other Considerations:** In terms of selecting a project for construction, the MAP-21 provides additional flexibility within the four year period on a TIP. Any project identified within the initial four year period may be accelerated or delayed based on current funds, needs, or priorities. If a newly identified federally funded project is to be considered for placement in the TIP, it must be presented to the transportation planning committees for their approval, placed into the Master Transportation Plan, and then added to the TIP. If approved, an amendment is then placed on the existing TIP to identify the newly advanced project.

## Approval

After approval by the Cheyenne MPO Policy Committee, the Transportation Improvement Program is presented to the Wyoming Department of Transportation for inclusion in the State Transportation Improvement Program. The STIP is then sent to the Governor of the State for approval.

## 3 - Recommended Projects and Programs

The following sections summarize the projects prioritized for advancement during the four to five year planning period of the TIP.

**TABLE 1** summarizes projects which were listed in past TIPs. Construction is scheduled to begin on these projects during the spring and summer of 2015. They are provided here for information only.

**TABLE 2** summarizes the **federally funded** transportation-related projects which have been offered by the different agencies for construction, reconstruction or other various types of activity in Fiscal Year '16.

**TABLE 3** summarizes the transportation-related projects which have been offered by the different agencies for construction, reconstruction or other various types of activity in Fiscal Year '16, which **are not funded** by the Federal Government.

**TABLE 4** summarizes by agency all the transportation-related projects in the Metropolitan Planning Area which are scheduled to be completed during the four year period. Spring and summer 2015 projects are included for information only.

**TABLE 5** summarizes the projected funds which will be made available to the different agencies for transportation projects. This financial plan is provided to show that projected projects do not exceed projected revenues.

**TABLES 6** lists the Pavement Management System (PMS) projects the City intends to conduct during 2015.

**Appendix A** explains the abbreviations used in the Funding Source column.

**Appendix B** includes maps showing project locations.

**Appendix C** is the MPO "Self-Certification" Statement.

*Note: The Transportation Planning Process Committees have reviewed these projects and have concurred with the priorities assigned by the various agencies.*

**TABLE 1**  
**FY 2015 PROJECTS WHICH HAVE STARTED BY JUNE 2015 (For Information Only)**

**FY 2015 FEDERALLY FUNDED PROJECTS CHEYENNE URBAN AREA**

<b>Agency:</b>	<b>Project Description:</b>	<b>Federal</b>	<b>State</b>	<b>Local</b>	<b>Total</b>
TRANSIT	Transit Buses	\$324,000		\$81,000	<b>\$405,000</b>
TRANSIT	General Operating Assistance and Capital	\$945,376	\$116,350	\$758,661	<b>\$1,820,387</b>
COUNTY	Safe Routes to School Afflerbach	\$200,000			<b>\$200,000</b>
AIRPORT BOARD	Design/Reconstruct Taxiway A from GA Ramp to Taxiway A1	\$4,381,250	\$138,355	\$92,237	<b>\$4,611,842</b>
<b>Total Funds for 2015 Federally Funded Projects:</b>		<b>\$5,850,626</b>	<b>\$254,705</b>	<b>\$931,898</b>	<b>\$7,037,229</b>

**FY 2015 STATE & LOCALLY FUNDED PROJECTS CHEYENNE URBAN AREA**

<b>Agency:</b>	<b>Project Description:</b>	<b>State</b>	<b>Local</b>	<b>Total</b>
CITY	19th Street Rehabilitation		\$375,537	<b>\$375,537</b>
CITY	Logan - Nationway to Pershing		\$98,139	<b>\$98,139</b>
CITY	Street and Pavement Work		\$5,850,000	<b>\$5,850,000</b>
CITY	WyDot and Federal Project Matches		\$375,000	<b>\$375,000</b>
CITY	1% Construction Management and Administration		\$475,000	<b>\$475,000</b>
CITY	Stormwater Drainage Maintenance and Repair Projects		\$500,000	<b>\$500,000</b>
AIRPORT BOARD	2015 Aviation Encouragement	\$5,000		<b>\$5,000</b>
AIRPORT BOARD	Seal Coat and Mark Airside Pavements	\$315,000	\$35,000	<b>\$350,000</b>
BOPU SEWER	General Sewer		\$810,558	<b>\$810,558</b>
BOPU WATER	General Water		\$2,337,467	<b>\$2,337,467</b>
<b>Total Funds for 2015 State &amp; Locally Funded Projects:</b>		<b>\$320,000</b>	<b>\$10,481,164</b>	<b>\$10,801,164</b>

<b>Total Funds for 2015 Federally Funded Projects:</b>	<b>\$5,850,626</b>	<b>\$254,705</b>	<b>\$931,898</b>	<b>\$7,037,229</b>
<b>Total Funds for 2015 State &amp; Locally Funded Projects:</b>		<b>\$320,000</b>	<b>\$10,481,164</b>	<b>\$10,801,164</b>
<b>Total Funds for 2015 Funded Projects:</b>	<b>\$5,850,626</b>	<b>\$574,705</b>	<b>\$11,413,062</b>	<b>\$17,838,393</b>

**TABLE 2**  
**FISCAL YEAR 2016 FEDERALLY FUNDED PROJECTS CHEYENNE URBAN AREA**

<b>Agency:</b>	<b>Project Description:</b>	<b>Federal</b>	<b>State</b>	<b>Local</b>	<b>Total</b>
<b>CITY</b>	BNSF Rail Trail	\$200,000		\$50,000	<b>\$250,000</b>
<b>CITY</b>	The Christensen Project: A Bridge to Prosperity	\$10,331,925	\$3,000,000	\$1,287,100	<b>\$14,619,025</b>
<b>TRANSIT</b>	General Operating Assistance & Capital	\$964,284	\$116,350	\$773,834	<b>\$1,854,468</b>
<b>TRANSIT</b>	Transit Buses	\$325,600		\$81,400	<b>\$407,000</b>
<b>TRANSIT</b>	Upgrade/Build Bus Stops	\$176,000		\$44,000	<b>\$220,000</b>
<b>TRANSIT</b>	Surveillance Upgrade	\$56,000		\$14,000	<b>\$70,000</b>
<b>TRANSIT</b>	Fareboxes	\$237,600		\$59,400	<b>\$297,000</b>
<b>COUNTY</b>	West Allison Road Reconstruction	\$1,711,333		\$136,475	<b>\$1,847,808</b>
<b>AIRPORT BOARD</b>	Construct Commercial Apron	\$3,925,000	\$157,000	\$104,667	<b>\$4,186,667</b>
<b>AIRPORT BOARD</b>	Terminal Construction	\$1,150,000	\$2,790,500	\$9,761,167	<b>\$13,701,667</b>
<b>WYDOT</b>	I-25 North Overlay both lanes	\$7,293,852	\$766,543		<b>\$8,060,395</b>
<b>WYDOT</b>	Railroad Crossing Upgrades 22nd Street	\$72,392		\$7,608	<b>\$80,000</b>
<b>WYDOT</b>	Railroad Crossing Upgrades 21st Street	\$72,392		\$7,608	<b>\$80,000</b>
<b>WYDOT</b>	Railroad Crossing Upgrades 20th Street	\$72,392		\$7,608	<b>\$80,000</b>
<b>Total Funds for 2016 Federally Funded Projects:</b>		<b>\$26,588,770</b>	<b>\$6,830,393</b>	<b>\$12,334,867</b>	<b>\$45,754,030</b>

**TABLE 3**  
**FISCAL YEAR 2016 STATE & LOCALLY FUNDED PROJECTS CHEYENNE URBAN AREA**

<b>Agency:</b>	<b>Project Description:</b>	<b>State</b>	<b>Local</b>	<b>Total</b>
<b>CITY</b>	West Cheyenne Greenway Extension		\$40,000	<b>\$40,000</b>
<b>CITY</b>	Evers Blvd		\$348,000	<b>\$348,000</b>
<b>CITY</b>	Campstool and Dry Creek Culverts		\$110,000	<b>\$110,000</b>
<b>CITY</b>	Traffic Signal Fiber Optics	\$20,000	\$100,000	<b>\$120,000</b>
<b>CITY</b>	Fox Farm and Stanfield Drainage		\$100,000	<b>\$100,000</b>
<b>CITY</b>	19th Street Rehabilitation		\$3,314,391	<b>\$3,314,391</b>
<b>CITY</b>	24th Street Signal Replacements		\$470,000	<b>\$470,000</b>
<b>CITY</b>	Lake Minnehaha Phase 2	\$2,300,000		<b>\$2,300,000</b>
<b>CITY</b>	Street And Pavement Work		\$4,550,000	<b>\$4,550,000</b>
<b>CITY</b>	1% Construction Management And Administration		\$550,000	<b>\$550,000</b>
<b>CITY</b>	Stormwater Drainage Maintenance And Repair Projects		\$550,000	<b>\$550,000</b>
<b>CITY</b>	Logan Nationway to Pershing		\$5,222,500	<b>\$5,222,500</b>
<b>AIRPORT BOARD</b>	Relocate Distance Remaining Signs and Barrier	\$198,000	\$22,000	<b>\$220,000</b>
<b>BOPU WATER</b>	Water Projects		\$6,619,800	<b>\$6,619,800</b>
<b>BOPU SEWER</b>	Sewer Projects		\$1,876,000	<b>\$1,876,000</b>
<b>Total Funds for 2016 State &amp; Locally Funded Projects:</b>		<b>\$2,518,000</b>	<b>\$23,872,691</b>	<b>\$26,390,691</b>

	<b>Federal</b>	<b>State</b>	<b>Local</b>	<b>Total</b>
<b>Total Funds for 2016 Federally Funded Projects:</b>	<b>\$26,588,770</b>	<b>\$6,830,393</b>	<b>\$12,334,867</b>	<b>\$45,754,030</b>
<b>Total Funds for 2016 State &amp; Locally Funded Projects:</b>		<b>\$2,518,000</b>	<b>\$23,872,691</b>	<b>\$26,390,691</b>
<b>Total Funds for 2016 Funded Projects:</b>	<b>\$26,588,770</b>	<b>\$9,348,393</b>	<b>\$36,207,558</b>	<b>\$72,144,721</b>

TABLE 4 FY 2016 - 2019 TIP PROJECT LISTING

PID:	Agency:	Project Description:	Phase:	Funding:	2015	2016	2017	2018	2019	5 Year TIP
14	CITY	<b>West Cheyenne Greenway Extension</b>								
		MLK Jr. Park to I-25 Design	L	CITY		\$40,000				\$40,000
		MLK Jr. Park to Westland Rd	L	CITY			\$225,000			\$225,000
		<b>Total Federal Funds:</b>								
		<b>Total:</b>				\$40,000	\$225,000			\$265,000
17	CITY	<b>South Cheyenne Greenway</b>								
		Cribbon: I-80 to Allison; Partoyan to Deming	L	CITY			\$225,000			\$225,000
		<b>Total:</b>					\$225,000			\$225,000
19	CITY	<b>North Cheyenne Greenway - Powderhouse: Storey to Gardenia; Converse: Grandview to Mason Way</b>								
		Construction	L	CITY			\$220,000			\$220,000
		<b>Total:</b>					\$220,000			\$220,000
16	CITY	<b>Saddle Ridge Greenway Connector</b>								
		Construction	F	TAP	\$275,000					\$275,000
		Construction	L	CITY	\$55,000					\$55,000
		<b>Total Federal Funds:</b>			\$275,000					
		<b>Total:</b>			\$330,000					\$330,000
18	CITY	<b>BNSF Rail Trail</b>								
		Construction	F	TAP		\$200,000				\$200,000
		Construction	L	CITY		\$50,000				\$50,000
		<b>Total Federal Funds:</b>				\$200,000				
		<b>Total:</b>				\$250,000				\$250,000
6	CITY	<b>The Christensen Project: A Bridge to Prosperity: Construction of Christensen Road between Commerce Circle and US 30, to include a bridge over the Union Pacific.</b>								
		Construction	F	TIGER		\$8,831,925				\$8,831,925
		Construction	F	STPU		\$1,500,000				\$1,500,000
		Construction	S	WBC		\$3,000,000				\$3,000,000
		Construction	P	PRIVATE		\$375,000				\$375,000
		Construction	L	CITY		\$225,000				\$225,000
		Construction	L	CITY		\$158,000				\$158,000
		Construction	L	BOPU		\$529,100				\$529,100
		<b>Total Federal Funds:</b>				\$10,331,925				\$10,331,925
		<b>Total:</b>				\$14,619,025				\$14,619,025

TABLE 4 FY 2016 - 2019 TIP PROJECT LISTING

PID:	Agency:	Project Description:	Phase:	Funding:	2015	2016	2017	2018	2019	5 Year TIP	
15	CITY	Evers Blvd., Bishop to Vandehei									
		Planning	F	MPO	\$80,000					\$80,000	
		Design	L	CITY				\$500,000		\$500,000	
		Design	L	WATER		\$100,000	\$512,500			\$612,500	
		Construction	L	CITY					\$3,500,000	\$3,500,000	
		Construction	L	SEWER		\$248,000	\$1,240,000			\$1,488,000	
		Total Federal Funds:				\$80,000	\$0	\$0	\$0	\$0	\$80,000
		Total:				\$80,000	\$348,000	\$1,752,500	\$500,000	\$3,500,000	\$6,180,500
13	CITY	Campstool & Dry Creek Culverts									
		Construction	L	CITY		\$110,000				\$110,000	
		Total Federal Funds:				\$0				\$0	
		Total:				\$110,000				\$110,000	
12	CITY	Traffic Signal Fiber Optics									
		Phase 1	L	CITY		\$100,000				\$100,000	
		Phase 1	S	CMP		\$20,000				\$20,000	
		Phase 2	L	CITY			\$50,000			\$50,000	
		Total Federal Funds:				\$0	\$0	\$0	\$0	\$0	
		Total:				\$120,000	\$50,000	\$0	\$0	\$170,000	
11	CITY	Fox Farm & Stanfield Drainage Improvements									
		Construction	L	CITY		\$100,000				\$100,000	
		Total Federal Funds:				\$0				\$0	
		Total:				\$100,000				\$100,000	
22	CITY	19th Street Rehabilitation: Phase 1, Warren to Morrie; Phase 2, Crow Creek to Warren									
		Design	L	CITY	\$280,271					\$280,271	
		Design	L	BOPU	\$95,266					\$95,266	
		Construction Ph. 1	L	CITY		\$2,327,618				\$2,327,618	
		Construction Ph. 1	L	BOPU		\$986,773				\$986,773	
		Construction Ph. 2	L	CITY			\$3,200,000			\$3,200,000	
		Construction Ph. 2	L	BOPU			\$1,000,000			\$1,000,000	
		Total Federal Funds:				\$0	\$0	\$0		\$0	
		Total:				\$375,537	\$3,314,391	\$4,200,000		\$7,889,928	
10	CITY	24th St. Signal Replacements (Pioneer, Carey, Evans)									
		Design	L	CITY		\$20,000				\$20,000	
		Construction	L	CITY		\$450,000				\$450,000	
		Total Federal Funds:				\$0				\$0	
		Total:				\$470,000				\$470,000	

TABLE 4 FY 2016 - 2019 TIP PROJECT LISTING

PID:	Agency:	Project Description:	Phase:	Funding:	2015	2016	2017	2018	2019	5 Year TIP
	CITY	Signal Replacements (tbd)								
		Design	L	CITY				\$15,000		\$15,000
		Construction	L	CITY				\$400,000		\$400,000
		Total Federal Funds:						\$0		\$0
		Total:						\$415,000		\$415,000
9	CITY	Widen Converse between Dell Range and Ogden								
		Design	L	CITY					\$200,000	\$200,000
		Total Federal Funds:							\$0	\$0
		Total:							\$200,000	\$200,000
8	CITY	Lake Minnehaha Phase 2/Holliday Basin Phase 1								
		Design	S	SLIB	\$200,000					\$200,000
		Construction	S	SLIB		\$2,300,000				\$2,300,000
		Total Federal Funds:			\$0	\$0				\$0
		Total:			\$200,000	\$2,300,000				\$2,500,000
	CITY	STREET AND PAVEMENT WORK								
		Construction	L	CITY	\$4,350,000	\$4,550,000	\$4,550,000	\$4,550,000	\$4,550,000	\$22,550,000
		Construction	L	CITY RES	\$1,500,000					\$1,500,000
		Total Federal Funds:			\$0	\$0	\$0	\$0	\$0	\$0
		Total:			\$5,850,000	\$4,550,000	\$4,550,000	\$4,550,000	\$4,550,000	\$24,050,000
	CITY	1% CONSTRUCTION MANAGEMENT AND ADMINISTRATION								
		Construction	L	CITY	\$475,000	\$550,000	\$550,000	\$550,000	\$550,000	\$2,675,000
		Total Federal Funds:								\$0
		Total:			\$475,000	\$550,000	\$550,000	\$550,000	\$550,000	\$2,675,000
	CITY	STORMWATER DRAINAGE MAINTENANCE AND REPAIR PROJECTS								
		Construction	L	CITY	\$500,000	\$550,000	\$550,000	\$550,000	\$550,000	\$2,700,000
		Total Federal Funds:								\$0
		Total:			\$500,000	\$550,000	\$550,000	\$550,000	\$550,000	\$2,700,000

**TABLE 4 FY 2016 - 2019 TIP PROJECT LISTING**

PID:	Agency:	Project Description:	Phase:	Funding:	2015	2016	2017	2018	2019	5 Year TIP	
25	CITY	LOGAN - NATIONWAY TO PERSHING (19TH - HUGUR TO LOGAN INCLUDED)									
		Design	L	CITY		\$240,000				\$240,000	
		Construction	L	CITY		\$2,900,000				\$2,900,000	
		Design	L	WATER	\$72,623					\$72,623	
		Design	L	SEWER	\$25,516					\$25,516	
		Construction	L	WATER		\$1,540,000				\$1,540,000	
		Construction	L	SEWER		\$542,500				\$542,500	
		Total Federal Funds:									\$0
		Total:				\$98,139	\$5,222,500				\$5,320,639
CITY TOTALS					2015	2016	2017	2018	2019	5 Year TIP	
Total Federal Funds:					\$355,000	\$10,531,925	\$0	\$0	\$0	\$10,886,925	
Total State Funds:					\$200,000	\$5,320,000	\$0	\$0	\$0	\$5,520,000	
Total Local Funds:					\$7,353,676	\$16,316,991	\$12,322,500	\$6,565,000	\$9,350,000	\$51,908,167	
Total:					\$7,908,676	\$32,168,916	\$12,322,500	\$6,565,000	\$9,350,000	\$68,315,092	



TABLE 4 FY 2015 - 2019 TIP PROJECT LISTING

Agency:	Project Description:	Phase:	Funding Source:	2015	2016	2017	2018	2019	5 Year TIP
TRANSIT	TRANSIT BUSES								
		Other	F FTA	\$324,000	\$325,600	\$341,880	\$358,974	\$376,923	\$1,727,377
		Other	L MATCHTRAN	\$81,000	\$81,400	\$85,470	\$89,744	\$94,231	\$431,844
		Total Federal Funds:		\$324,000	\$325,600	\$341,880	\$358,974	\$376,923	\$1,727,377
		Total:		\$405,000	\$407,000	\$427,350	\$448,718	\$471,153	\$2,159,221
TRANSIT	UPGRADE/BUILD BUS STOPS								
		Other	F FTA		\$176,000				\$176,000
		Other	L MATCHTRAN		\$44,000				\$44,000
		Total Federal Funds:			\$176,000				\$176,000
		Total:			\$220,000				\$220,000
TRANSIT	SURVEILLANCE UPGRADE								
		Other	F FTA		\$56,000				\$56,000
		Other	L MATCHTRAN		\$14,000				\$14,000
		Total Federal Funds:			\$56,000				\$56,000
		Total:			\$70,000				\$70,000
TRANSIT	FAREBOXES								
		Other	F FTA		\$237,600				\$237,600
		Other	L MATCHTRAN		\$59,400				\$59,400
		Total Federal Funds:			\$237,600				\$237,600
		Total:			\$297,000				\$297,000
TRANSIT	ELECTRONIC PRE-TRIP EQUIPMENT								
		Other	F FTA			\$8,000			\$8,000
		Other	L MATCHTRAN			\$2,000			\$2,000
		Total Federal Funds:				\$8,000			\$8,000
		Total:				\$10,000			\$10,000

**TABLE 4 FY 2015 - 2019 TIP PROJECT LISTING**

Agency:	Project Description:	Phase:	Funding Source:	2015	2016	2017	2018	2019	5 Year TIP	
TRANSIT	TRAINING CENTER									
		Other	F	FTA			\$200,000			\$200,000
		Other	L	MATCHTRAN			\$50,000			\$50,000
	Total Federal Funds:					\$200,000			\$200,000	
	Total:					\$250,000			\$250,000	
TRANSIT	GENERAL OPERATING ASSISTANCE & CAPITAL									
		Other	F	FTA	\$945,376	\$964,284	\$983,569	\$1,003,241	\$1,023,305	\$4,919,775
		Other	S	Section IIIB	\$6,350	\$6,350	\$6,350	\$6,350	\$6,350	\$31,750
		Other	S	Section 5311	\$110,000	\$110,000	\$110,000	\$110,000	\$110,000	\$550,000
		Other	L	MATCHTRAN	\$758,661	\$773,834	\$789,311	\$805,097	\$821,199	\$3,948,102
	Total Federal Funds:			\$945,376	\$964,284	\$983,569	\$1,003,241	\$1,023,305	\$4,919,775	
	Total:			\$1,820,387	\$1,854,468	\$1,889,230	\$1,924,688	\$1,960,854	\$9,449,627	
TRANSIT TOTALS				2015	2016	2017	2018	2019	5 Year TIP	
	Total Federal Funds:			\$1,269,376	\$1,759,484	\$1,533,449	\$1,362,215	\$1,400,228	\$7,324,751	
	Total State Funds:			\$116,350	\$116,350	\$116,350	\$116,350	\$116,350	\$581,750	
	Total Local Funds:			\$839,661	\$855,234	\$874,781	\$894,841	\$915,430	\$4,379,946	
	Total:			\$2,225,387	\$2,731,068	\$2,524,580	\$2,373,405	\$2,432,008	\$12,286,448	

TABLE 4 FY 2016 - 2019 TIP PROJECT LISTING

PID:	Agency:	Project Description:	Phase:	Funding Source:	2015	2016	2017	2018	2019	5 Year TIP
42	COUNTY	SAFE ROUTES TO SCHOOL AFFLERBACH: Design and construction of a school walking path from South Fork Mobile Home Park to Afflerbach Elementary along Ave B2 ROW								
		Construction	F	SRTS	\$200,000					\$200,000
		Total Federal Funds:				\$200,000				\$200,000
		Total:				\$200,000				\$200,000
35	COUNTY	WEST ALLISON ROAD RECONSTRUCTION: Design and reconstruction of Allison Road between Walterscheid and South Greeley Highway								
		Construction	F	STPU		\$1,711,333				\$1,711,333
		Construction	L	CRF		\$136,475				\$136,475
		Total Federal Funds:				\$1,711,333				\$1,711,333
		Total:				\$1,847,808				\$1,847,808
COUNTY TOTALS					2015	2016	2017	2018	2019	5 Year TIP
Total Federal Funds:					\$200,000	\$1,711,333	\$0	\$0	\$0	\$1,911,333
Total State Funds:					\$0	\$0	\$0	\$0	\$0	\$0
Total Local Funds:					\$0	\$136,475	\$0	\$0	\$0	\$136,475
Total:					\$200,000	\$1,847,808	\$0	\$0	\$0	\$2,047,808

TABLE 4 FY 2016 - 2019 TIP PROJECT LISTING

Agency:	Project Description:	Phase:	Funding Source:	2015	2016	2017	2018	2019	5 Year TIP
AIRPORT BOARD	2015 Aviation Encouragement								
		Administration	S	SMatchAir	\$5,000				\$5,000
		Total Federal Funds:			\$0				\$0
		Total:			\$5,000				\$5,000
AIRPORT BOARD	Seal Coat and Mark Airside Pavements								
		Administration	S	SMatchAir	\$315,000				\$315,000
		Administration	L	Airport	\$35,000				\$35,000
		Total Federal Funds:			\$0				\$0
		Total:			\$350,000				\$350,000
AIRPORT BOARD	Construct Commercial Apron								
		Administration	F	FAA		\$3,925,000			\$3,925,000
		Administration	S	SMatchAir		\$157,000			\$157,000
		Administration	L	Airport		\$104,667			\$104,667
		Total Federal Funds:				\$3,925,000			\$3,925,000
Total:				\$4,186,667			\$4,186,667		
AIRPORT BOARD	TERMINAL CONSTRUCTION								
		Construction	F	FAA		\$1,150,000			\$1,150,000
		Construction	S	SMatchAir		\$2,790,500			\$2,790,500
		Construction	L	Airport		\$9,761,167			\$9,761,167
		Total Federal Funds:				\$1,150,000			\$1,150,000
Total:				\$13,701,667			\$13,701,667		
AIRPORT BOARD	Relocate Distance Remaining Signs & Remove Arrester Barrier								
		Administration	S	SMatchAir		\$198,000			\$198,000
		Administration	L	Airport		\$22,000			\$22,000
		Total Federal Funds:				\$0			\$0
Total:				\$220,000			\$220,000		
AIRPORT BOARD	AQUIRE SRE (PLOW)								
		Administration	F	FAA				\$450,000	\$450,000
		Administration	S	SMatchAir				\$18,000	\$18,000
		Administration	L	Airport				\$12,000	\$12,000
		Total Federal Funds:						\$450,000	\$450,000
Total:						\$480,000	\$480,000		

TABLE 4 FY 2016 - 2019 TIP PROJECT LISTING

Agency:	Project Description:	Phase:	Funding Source:	2015	2016	2017	2018	2019	5 Year TIP
AIRPORT BOARD	RECONSTRUCT R/W 9/27, DESIGN	Design/Construct	F	FAA				\$700,000	\$700,000
		Design/Construct	S	SMatchAir				\$28,000	\$28,000
		Design/Construct	L	Airport				\$18,667	\$18,667
		Total Federal Funds:						\$700,000	\$700,000
		Total:						\$746,667	\$746,667
AIRPORT BOARD TOTALS				2015	2016	2017	2018	2019	5 Year TIP
Total Federal Funds:				\$0	\$5,075,000	\$0	\$450,000	\$700,000	\$6,225,000
Total State Funds:				\$320,000	\$3,145,500	\$0	\$18,000	\$28,000	\$3,511,500
Total Local Funds:				\$35,000	\$9,887,834	\$0	\$12,000	\$18,667	\$9,953,501
Total:				\$355,000	\$18,108,334	\$0	\$480,000	\$746,667	\$19,690,001

**TABLE 4 FY 2016 - 2019 TIP PROJECT LISTING**

PID:	Agency:	Project Description:	Phase:	Funding Source:	2015	2016	2017	2018	2019	5 Year TIP
33	WYDOT	<b>WYDOT ENHANCEMENTS:</b> New Enhancements on West Lincolnway between Westland Rd to Little America, finish northside and new on southside Phase I								
			Construction	F TAP	\$360,000					\$360,000
			Construction	L CITY	\$40,000					\$40,000
		<b>Total Federal Funds:</b>			<b>\$360,000</b>					<b>\$360,000</b>
		<b>Total:</b>			<b>\$400,000</b>					<b>\$400,000</b>
	WYDOT	<b>Expoxy Striping in the City of Cheyenne Varions Locations</b>								
			Construction	S ARSCT	\$88,248					\$88,248
		<b>Total Federal Funds:</b>			<b>\$88,248</b>					<b>\$88,248</b>
		<b>Total:</b>			<b>\$88,248</b>					<b>\$88,248</b>
32	WYDOT	<b>LINCOLNWAY Overlay and upgrade ADA between Capitol and Warren</b>								
			Construction	F NHPP	\$371,440					\$371,440
		<b>Total Federal Funds:</b>			<b>\$371,440</b>					<b>\$371,440</b>
		<b>Total:</b>			<b>\$371,440</b>					<b>\$371,440</b>
36	WYDOT	<b>I-80 Mill and Overlay MP 348-357</b>								
			Construction	S SCP	\$10,700,000					\$10,700,000
		<b>Total Federal Funds:</b>			<b>\$0</b>					<b>\$0</b>
		<b>Total:</b>			<b>\$10,700,000</b>					<b>\$10,700,000</b>
31	WYDOT	<b>Bridge Rehab UPRR Structure and I-25/I-80 Interchange</b>								
			Construction	S SCP	\$1,900,000					\$1,900,000
		<b>Total Federal Funds:</b>			<b>\$0</b>					<b>\$0</b>
		<b>Total:</b>			<b>\$1,900,000</b>					<b>\$1,900,000</b>
34	WYDOT	<b>RAILROAD CROSSING UPGRADES: 18TH STREET</b>								
			Construction	F RHC	\$72,392					\$72,392
			Construction	L CITY	\$7,608					\$7,608
		<b>Total Federal Funds:</b>			<b>\$72,392</b>					<b>\$72,392</b>
		<b>Total:</b>			<b>\$80,000</b>					<b>\$80,000</b>

**TABLE 4 FY 2016 - 2019 TIP PROJECT LISTING**

PID:	Agency:	Project Description:	Phase:	Funding Source:	2015	2016	2017	2018	2019	5 Year TIP
30	WYDOT	RAILROAD CROSSING UPGRADES: 17TH STREET								
			Construction	F RHC	\$72,392					\$72,392
			Construction	L CITY	\$7,608					\$7,608
			Total Federal Funds:		\$72,392					\$72,392
			Total:		\$80,000					\$80,000
28	WYDOT	RAILROAD CROSSING UPGRADES: 24TH STREET								
			Construction	F RHC	\$90,490					\$90,490
			Construction	L CITY	\$9,510					\$9,510
			Total Federal Funds:		\$90,490					\$90,490
			Total:		\$100,000					\$100,000
29	WYDOT	I-25 North Overlay both lanes MP 16-25								
			Construction	F NHPP		\$7,293,852				\$7,293,852
			Construction	S S MATCH HIGH		\$766,543				\$766,543
			Total Federal Funds:			\$7,293,852				\$7,293,852
			Total:			\$8,060,395				\$8,060,395
27	WYDOT	RAILROAD CROSSING UPGRADES: 22ND STREET								
			Construction	F RHC		\$72,392				\$72,392
			Construction	L CITY		\$7,608				\$7,608
			Total Federal Funds:							\$0
			Total:			\$80,000				\$80,000
26	WYDOT	RAILROAD CROSSING UPGRADES: 21ST STREET								
			Construction	F RHC		\$72,392				\$72,392
			Construction	L CITY		\$7,608				\$7,608
			Total Federal Funds:							\$0
			Total:			\$80,000				\$80,000
25	WYDOT	RAILROAD CROSSING UPGRADES: 20TH STREET								
			Construction	F RHC		\$72,392				\$72,392
			Construction	L CITY		\$7,608				\$7,608
			Total Federal Funds:			\$72,392				\$72,392
			Total:			\$80,000				\$80,000

**TABLE 4 FY 2016 - 2019 TIP PROJECT LISTING**

PID:	Agency:	Project Description:	Phase:	Funding Source:	2015	2016	2017	2018	2019	5 Year TIP
37	WYDOT	I-80 Central Ave to Archer Interchange Overlay (Eastbound lane 2018) (Westbound Lane 2019) MP 362-372								
			Construction	F NHPP				\$6,252,040	\$6,585,955	\$12,837,995
			Construction	S S MATCH HIGH				\$657,054	\$692,147	\$1,349,201
		Total Federal Funds:						\$6,252,040	\$6,585,955	\$12,837,995
		Total:						\$6,909,094	\$7,278,102	\$14,187,196

WYDOT TOTALS					2015	2016	2017	2018	2019	5 Year TIP
		Total Federal Funds:			\$966,714	\$7,511,028	\$0	\$6,252,040	\$6,585,955	\$21,315,737
		Total State Funds:			\$12,688,248	\$766,543	\$0	\$657,054	\$692,147	\$14,803,992
		Total Local Funds:			\$64,726	\$22,824	\$0	\$0	\$0	\$87,550
		Total:			\$13,719,688	\$8,300,395	\$0	\$6,909,094	\$7,278,102	\$36,207,279



**TABLE 4 FY 2016 - 2019 TIP PROJECT LISTING**

PID:	Agency:	Project Description:	Phase:	Funding Source:	2015	2016	2017	2018	2019	5 Year TIP
96	BOPU SEWER	<b>West Lincolnway:</b> Clean, video, and reline 540' of 8" VCP installed in 1960, from 103MH037 to 103MH132.								
			Construction	L Sewer	\$72,556					\$72,556
		<b>Total:</b>			<b>\$72,556</b>					<b>\$72,556</b>
97	BOPU SEWER	<b>Windsor Boulevard:</b> Clean, video, and reline 325' of 8" VCP installed in 1960, from 048MH046 to 048MH047.								
			Construction	L Sewer	\$38,212					\$38,212
		<b>Total:</b>			<b>\$38,212</b>					<b>\$38,212</b>
98	BOPU SEWER	<b>Warren Avenue:</b> Clean, video, and reline 350' of 8" VCP installed in 1930, from 090MH169 to 090MH224.								
			Construction	L Sewer	\$39,894					\$39,894
		<b>Total:</b>			<b>\$39,894</b>					<b>\$39,894</b>
99	BOPU SEWER	<b>West Pershing Boulevard:</b> Clean, video, and reline 500' of 8" VCP installed in 1930, from 075MH037 to 075MH038.								
			Construction	L Sewer	\$57,544					\$57,544
		<b>Total:</b>			<b>\$57,544</b>					<b>\$57,544</b>
100	BOPU SEWER	<b>Green Valley:</b> Clean, video, and reline 250' of 8" VCP installed in 1950, from 092MH042 to 092MH263.								
			Construction	L Sewer	\$41,321					\$41,321
		<b>Total:</b>			<b>\$41,321</b>					<b>\$41,321</b>
101	BOPU SEWER	<b>Seminole Road:</b> Clean, video, and reline 210' of 8" VCP installed in 1960, from 062LH468 to 062MH157.								
			Construction	L Sewer	\$76,390					\$76,390
		<b>Total:</b>			<b>\$76,390</b>					<b>\$76,390</b>
102	BOPU SEWER	<b>Converse Avenue:</b> Replace 350' of 8" VCP installed in 1950 with 8" PVC from 092MH005 to MH092MH003.								
			Construction	L Sewer	\$104,429					\$104,429
		<b>Total:</b>			<b>\$104,429</b>					<b>\$104,429</b>
103	BOPU SEWER	<b>Allison Road:</b> Replace 290' of 8" VCP installed in 1960 with 8" PVC from 118MH037 to 118MH038.								
			Construction	L Sewer	\$122,809					\$122,809
		<b>Total:</b>			<b>\$122,809</b>					<b>\$122,809</b>
104	BOPU SEWER	<b>East 13th Street:</b> Replace 275' of 6" VCP installed in 1940 with 8" PVC from 091MH162 to 091MH161.								
			Construction	L Sewer	\$77,515					\$77,515
		<b>Total:</b>			<b>\$77,515</b>					<b>\$77,515</b>
105	BOPU SEWER	<b>Evans Avenue:</b> Replace 250' of 8" VCP installed in 1930 with 8" PVC from 090MH285 to the east.								
			Construction	L Sewer	\$69,019					\$69,019
		<b>Total:</b>			<b>\$69,019</b>					<b>\$69,019</b>

**TABLE 4 FY 2016 - 2019 TIP PROJECT LISTING**

PID:	Agency:	Project Description:	Phase:	Funding Source:	2015	2016	2017	2018	2019	5 Year TIP
106	BOPU SEWER	<b>West 27th Street:</b> Replace 350' of 8" VCP installed in 1930 with 8" PVC from 089LH173 to 089MH070.								
			Construction	L Sewer	\$110,869					\$110,869
			<b>Total:</b>		<b>\$110,869</b>					<b>\$110,869</b>
	BOPU SEWER	<b>Water Reclamation Special Projects</b>								
			Construction	L Sewer		\$300,000				\$300,000
			<b>Total:</b>			<b>\$300,000</b>				<b>\$300,000</b>
107	BOPU SEWER	<b>19th Street (Morrie Ave to Dey Ave):</b> \$192,000 – Snyder Avenue to Dey Avenue: replace 960' of 6" sanitary sewer main with 8" PVC. \$114,000 – Warren Avenue to Snyder Avenue; extend existing 8" of sanitary sewer 350' from Evans Avenue to House Avenue and replace 220' of 6" and 8" sanitary sewer main with 8" PVC sanitary sewer at Pebrican Avenue and Van Lennen Avenue.								
			Construction	L Sewer		\$306,000				\$306,000
			<b>Total:</b>			<b>\$306,000</b>				<b>\$306,000</b>
108	BOPU SEWER	<b>Evans Avenue:</b> Additional funds replacing 360' existing 8" VCP installed in 1930, from 090MH306 to 090MH300/ The existing sewer does not have adequate grade for lining								
			Construction	L Sewer		\$46,800				\$46,800
			<b>Total:</b>			<b>\$46,800</b>				<b>\$46,800</b>
109	BOPU SEWER	<b>Dry Creek Line:</b> Replace 1700' of 10" VCP installed in 1960 with 12" PVC from Prairie Ave to Powderhouse (062MH252 to 063MH069).								
			Construction	L Sewer		\$561,000				\$561,000
			<b>Total:</b>			<b>\$561,000</b>				<b>\$561,000</b>
73	BOPU SEWER	<b>Andover Drive:</b> Replace 750' of 6" and 8" VCP with 8" PVC from E 3rd Ave to the lamphole north of E 5th Ave (077MH192 to 077LH261 and replace LH261, MH193 and MH194).								
			Construction	L Sewer		\$247,500				\$247,500
			<b>Total:</b>			<b>\$247,500</b>				<b>\$247,500</b>
77	BOPU SEWER	<b>E 10th Street:</b> Replace 620' of 8" VCP installed in 1950 with 12" PVC from Cleveland Ave to Monroe Ave (093MH192 to 093MH141).								
			Construction	L Sewer		\$204,600				\$204,600
			<b>Total:</b>			<b>\$204,600</b>				<b>\$204,600</b>
80	BOPU SEWER	<b>Pebrican Avenue:</b> Replace 170' of 8" VCP installed in 1930 with 8" PVC from 091MH061 at E 18th St north to the end of line and replace MH at the north end.								
			Construction	L Sewer		\$56,100				\$56,100
			<b>Total:</b>			<b>\$56,100</b>				<b>\$56,100</b>

**TABLE 4 FY 2016 - 2019 TIP PROJECT LISTING**

PID:	Agency:	Project Description:	Phase:	Funding Source:	2015	2016	2017	2018	2019	5 Year TIP
	<b>BOPU SEWER</b>	<b>Manhole Replacement:</b> Replace manholes with aging and structural issues identified by Collection supervisor.								
			Construction	L Sewer		\$154,000	\$350,000	\$350,000		\$854,000
			<b>Total:</b>			<b>\$154,000</b>	<b>\$350,000</b>	<b>\$350,000</b>		<b>\$854,000</b>
	<b>BOPU SEWER</b>	<b>Reimbursements for main Oversizing.</b>								
			Construction	L Sewer			\$300,000	\$300,000	\$300,000	\$900,000
			<b>Total:</b>				<b>\$300,000</b>	<b>\$300,000</b>	<b>\$300,000</b>	<b>\$900,000</b>
<b>74</b>	<b>BOPU SEWER</b>	<b>Dillon Avenue:</b> Clean, video, reline 730' of 8" VCP from MH north of W 27th St to the MH south of W 26th St (089MH094 to 089MH080) and replace MH095 and MH080.								
			Construction	L Sewer			\$127,750			\$127,750
			<b>Total:</b>				<b>\$127,750</b>			<b>\$127,750</b>
<b>82</b>	<b>BOPU SEWER</b>	<b>Albany Avenue:</b> Replace 340' of 6" VCP with 8" PVC from Cheyenne St to Garrett St (091MH107 to 091MH108).								
			Construction	L Sewer			\$68,000			\$68,000
			<b>Total:</b>				<b>\$68,000</b>			<b>\$68,000</b>
<b>84</b>	<b>BOPU SEWER</b>	<b>Forest Drive:</b> Clean, video, and reline 150' of 8" VCP from manhole south of Pine Dr east to the manhole in the ally (092MH104 to 092MH105).								
			Construction	L Sewer			\$26,250			\$26,250
			<b>Total:</b>				<b>\$26,250</b>			<b>\$26,250</b>
<b>86</b>	<b>BOPU SEWER</b>	<b>East Lincolnway:</b> Clean, video, and reline 360' of 8" VCP installed in 1950 from Campbell to Carbon (091MH159 to 091MH160).								
			Construction	L Sewer			\$63,000			\$63,000
			<b>Total:</b>				<b>\$63,000</b>			<b>\$63,000</b>
<b>110</b>	<b>BOPU SEWER</b>	<b>Dunn Avenue:</b> Clean, video, and reline 570' of 15" VCP installed in 1930 from E Lincolnway to the manhole south of E 13th St (091MH206 to 091MH208).								
			Construction	L Sewer			\$114,000			\$114,000
			<b>Total:</b>				<b>\$114,000</b>			<b>\$114,000</b>
<b>111</b>	<b>BOPU SEWER</b>	<b>4405 E 11th Street:</b> Clean, video, and reline 510' of 8" VCP installed in 1963 from Cleveland St east to end of cul-de-sac (093MH201 to 093MH199).								
			Construction	L Sewer			\$89,250			\$89,250
			<b>Total:</b>				<b>\$89,250</b>			<b>\$89,250</b>
<b>112</b>	<b>BOPU SEWER</b>	<b>Dry Creek Interceptor: Master Plan 12 Project -</b> Clean, video, and reline 3750' of 24" sewer main with 24" RCP from 062MH448 to 062MH240.								
			Construction	L Sewer			\$750,000			\$750,000
			<b>Total:</b>				<b>\$750,000</b>			<b>\$750,000</b>

**TABLE 4 FY 2016 - 2019 TIP PROJECT LISTING**

PID:	Agency:	Project Description:	Phase:	Funding Source:	2015	2016	2017	2018	2019	5 Year TIP
113	BOPU SEWER	Bishop Boulevard – Clean, video, and reline 760' of 8" VCP from 047MH350 to 047MH214.	Construction	L Sewer			\$133,000			\$133,000
		<b>Total:</b>					<b>\$133,000</b>			<b>\$133,000</b>
87	BOPU SEWER	East 10th Street – Replace 730' of existing 10" VCP installed in 1940 with 10" PVC from 092MH350 to 091MH182.	Construction	L Sewer			\$146,000			\$146,000
		<b>Total:</b>					<b>\$146,000</b>			<b>\$146,000</b>
88	BOPU SEWER	West Lincolnway – Clean, video and reline 375' of 12" VCP installed in 1940 from 103MH093 to 103MH095.	Construction	L Sewer			\$65,625			\$65,625
		<b>Total:</b>					<b>\$65,625</b>			<b>\$65,625</b>
91	BOPU SEWER	Warren Ave – Clean, video, and reline 370' of 9" VCP installed in 1910 from 090MH168 to 090MH167.	Construction	L Sewer			\$64,750			\$64,750
		<b>Total:</b>					<b>\$64,750</b>			<b>\$64,750</b>
93	BOPU SEWER	E 4th St – Clean, video, and reline 300' of 8" VCP from 105MH073 to 105LH230.	Construction	L Sewer			\$52,500			\$52,500
		<b>Total:</b>					<b>\$52,500</b>			<b>\$52,500</b>
50	BOPU SEWER	3246 Old Faithful Rd – Replace 290' of existing 8" VCP with 8" PVC from 092MH166 to 092MH165.	Construction	L Sewer			\$58,000			\$58,000
		<b>Total:</b>					<b>\$58,000</b>			<b>\$58,000</b>
51	BOPU SEWER	900 E 25th St – Clean, video, and reline 340' of 8" VCP from 090MH042 to 089MH098.	Construction	L Sewer			\$59,500			\$59,500
		<b>Total:</b>					<b>\$59,500</b>			<b>\$59,500</b>
52	BOPU SEWER	1000 Cleveland Ave – Replace 670' of existing 8" VCP installed in 1950 with 12" PVC from 093MH207 to 093MH192.	Construction	L Sewer			\$134,000			\$134,000
		<b>Total:</b>					<b>\$134,000</b>			<b>\$134,000</b>
53	BOPU SEWER	2200 E 17th St – Replace and relocate 330' of existing 8" VCP with 8" PVC from 091MH132 to 091MH133.	Construction	L Sewer			\$66,000			\$66,000
		<b>Total:</b>					<b>\$66,000</b>			<b>\$66,000</b>
54	BOPU SEWER	6102 Elk Ave – Clean, video, and reline 390' of 8" VCP installed in 1950 from 047MH161 to 061MH180.	Construction	L Sewer			\$68,250			\$68,250
		<b>Total:</b>					<b>\$68,250</b>			<b>\$68,250</b>

**TABLE 4 FY 2016 - 2019 TIP PROJECT LISTING**

PID:	Agency:	Project Description:	Phase:	Funding Source:	2015	2016	2017	2018	2019	5 Year TIP
55	BOPU SEWER	6100 Kevin Ave – Clean, video, and reline 310' of 8" VCP installed in 1960 from 048MH148 to 062MH046.	Construction	L Sewer			\$62,000			\$62,000
		<b>Total:</b>					<b>\$62,000</b>			<b>\$62,000</b>
56	BOPU SEWER	5021 Moran Ave – Clean, video, and reline 840' of 8" VCP installed in 1960 from 064MH332 to 064MH416.	Construction	L Sewer			\$168,000			\$168,000
		<b>Total:</b>					<b>\$168,000</b>			<b>\$168,000</b>
112	BOPU SEWER	Dry Creek Interceptor: Master Plan 12 Project – Clean, video, and reline 3000' of 24" sewer main with 24" RCP from 062MH448 to 062MH240	Construction	L Sewer				\$600,000		\$600,000
		<b>Total:</b>						<b>\$600,000</b>		<b>\$600,000</b>
57	BOPU SEWER	Dry Creek North 2: Master Plan 15 Project – Replace 3740' of 10" and 15" sewer main with 12" and 18" main from 064MH162 to 065MH034.	Construction	L Sewer				\$1,271,600		\$1,271,600
		<b>Total:</b>						<b>\$1,271,600</b>		<b>\$1,271,600</b>
58	BOPU SEWER	1100 W Pershing Blvd – Clean, video, and reline 10" VCP from 075MH027 to 075MH037.	Construction	L Sewer				\$64,750		\$64,750
		<b>Total:</b>						<b>\$64,750</b>		<b>\$64,750</b>
59	BOPU SEWER	3300 Alexander Ave – Replace 670' of 8" VCP with 8" PVC from 077MH219 to 077MH217.	Construction	L Sewer				\$134,000		\$134,000
		<b>Total:</b>						<b>\$134,000</b>		<b>\$134,000</b>
60	BOPU SEWER	100 King Court – Replace 560' of 8" VCP with 8" PVC from 118MH016 to 118MH015.	Construction	L Sewer				\$112,000		\$112,000
		<b>Total:</b>						<b>\$112,000</b>		<b>\$112,000</b>
61	BOPU SEWER	2020 E 16th St – Replace 315' of 6" VCP with 8" PVC from 091MH144 to 091LH421.	Construction	L Sewer				\$63,000		\$63,000
		<b>Total:</b>						<b>\$63,000</b>		<b>\$63,000</b>
62	BOPU SEWER	1500 Bighorn Ave – Replace 325' of 6" VCP with 8" PVC from 091MH150 to 091LH408.	Construction	L Sewer				\$65,000		\$65,000
		<b>Total:</b>						<b>\$65,000</b>		<b>\$65,000</b>
63	BOPU SEWER	205 Hynds – Replace 650' of 8" VCP installed in 1950 with 8" PVC from 118MH293 to 104MH010.	Construction	L Sewer				\$130,000		\$130,000
		<b>Total:</b>						<b>\$130,000</b>		<b>\$130,000</b>

**TABLE 4 FY 2016 - 2019 TIP PROJECT LISTING**

PID:	Agency:	Project Description:	Phase:	Funding Source:	2015	2016	2017	2018	2019	5 Year TIP
64	BOPU SEWER	900 West Pershing – Relocate and replace 400' of 10" VCP installed in 1930 with 10" or 12" PVC from 075MH041 to 375' to the west.	Construction	L Sewer				\$80,000		\$80,000
		<b>Total:</b>						<b>\$80,000</b>		<b>\$80,000</b>
65	BOPU SEWER	2649 Kelley Dr – Replace 210' of existing 6" VCP installed in 1950 with 8" PVC from 092MH086 to 092MH425.	Construction	L Sewer				\$42,000		\$42,000
		<b>Total:</b>						<b>\$42,000</b>		<b>\$42,000</b>
66	BOPU SEWER	3218 Boxelder Dr – Clean, video, and reline 360' of 8" VCP installed in 1950 from 092MH138 to 092MH342.	Construction	L Sewer				\$63,000		\$63,000
		<b>Total:</b>						<b>\$63,000</b>		<b>\$63,000</b>
67	BOPU SEWER	2815 Olive Dr – Replace 430' of 8" VCP installed in 1950 with 8" PVC from 092MH114 to 092LH375.	Construction	L Sewer				\$86,000		\$86,000
		<b>Total:</b>						<b>\$86,000</b>		<b>\$86,000</b>
68	BOPU SEWER	E 13th St – Replace 300' of 10" VCP installed in 1980 with 10" PVC from 094MH158 to 094MH159.	Construction	L Sewer				\$60,000		\$60,000
		<b>Total:</b>						<b>\$60,000</b>		<b>\$60,000</b>
69	BOPU SEWER	500 Platte Ave – Clean, video, and reline 360' of existing 12" VCP installed in 1940 and manholes installed in 1940 from 106MH024 to 106MH025	Construction	L Sewer				\$63,000		\$63,000
		<b>Total:</b>						<b>\$63,000</b>		<b>\$63,000</b>
70	BOPU SEWER	500 Barbell Ct – Clean, video, and reline 830' of existing 12" VCP installed in 1980 from 107MH002 to 107MH007.	Construction	L Sewer				\$145,250		\$145,250
		<b>Total:</b>						<b>\$145,250</b>		<b>\$145,250</b>
71	BOPU SEWER	Basin St – Replace 360' of existing 8" VCP installed in 1960 with 8" PVC from 064MH330 to 064MH331.	Construction	L Sewer				\$72,000		\$72,000
		<b>Total:</b>						<b>\$72,000</b>		<b>\$72,000</b>
112	BOPU SEWER	Dry Creek Interceptor: Master Plan 12 Project – Clean, video, and reline 3000' of existing 24" RCP from 062MH448 to 062MH240.	Construction	L Sewer					\$600,000	\$600,000
		<b>Total:</b>							<b>\$600,000</b>	<b>\$600,000</b>
72	BOPU SEWER	Dry Creek North 1: Master Plan 14 Project – Replace 3785' of 10" and 15" with new 12" and 18" from 064MH067 to 064MH106.	Construction	L Sewer					\$1,325,000	\$1,325,000
		<b>Total:</b>							<b>\$1,325,000</b>	<b>\$1,325,000</b>

**TABLE 4 FY 2016 - 2019 TIP PROJECT LISTING**

PID:	Agency:	Project Description:	Phase:	Funding Source:	2015	2016	2017	2018	2019	5 Year TIP
43	BOPU SEWER	Deming Blvd – Replace 1540' of 8" VCP installed in 1950 with 8" PVC from 092LH414 to 092MH337.								
			Construction	L Sewer					\$308,000	\$308,000
		Total:							\$308,000	\$308,000
44	BOPU SEWER	Forest Dr – Replace 335' of 8" VCP installed in 1960 with 8" PVC from 092MH106 to 092LH374.								
			Construction	L Sewer					\$67,000	\$67,000
		Total:							\$67,000	\$67,000
45	BOPU SEWER	Carey Ave – Replace 720' of 8" VCP installed in 1930 with 8" PVC from 090MH144 to 090MH141.								
			Construction	L Sewer					\$144,000	\$144,000
		Total:							\$144,000	\$144,000
	BOPU SEWER	Temporary Flow Meters								
			Construction	L Sewer					\$227,400	\$227,400
		Total:							\$227,400	\$227,400
46	BOPU SEWER	500 House Ave – Clean, video and reline 490' of 8" and 15" VCP installed in 1930 from 076MH051 to 076MH052.								
			Construction	L Sewer					\$98,000	\$98,000
		Total:							\$98,000	\$98,000
47	BOPU SEWER	1641 Fremont Ave – Replace 600' of 6" VCP installed in 1950 with 8" PVC from 092MH307 to 092LH363.								
			Construction	L Sewer					\$120,000	\$120,000
		Total:							\$120,000	\$120,000
48	BOPU SEWER	800 Platte Ave – Replace 350' of 8" VCP with 8" PVC from 092MH226 to 092LH395.								
			Construction	L Sewer					\$70,000	\$70,000
		Total:							\$70,000	\$70,000
49	BOPU SEWER	1800 E 22nd St – Replace 360' of 8" VCP with 8" PVC from 091MH082 to 091LH392.								
			Construction	L Sewer					\$72,000	\$72,000
		Total:							\$72,000	\$72,000
41	BOPU SEWER	W 23rd St – Replace 70' of 6" VCP installed in 1930 with 8" PVC from 090MH268 to the south.								
			Construction	L Sewer					\$14,000	\$14,000
		Total:							\$14,000	\$14,000

**TABLE 4 FY 2016 - 2019 TIP PROJECT LISTING**

PID:	Agency:	Project Description:	Phase:	Funding Source:	2015	2016	2017	2018	2019	5 Year TIP
113	BOPU SEWER	Bishop Blvd and Evers Blvd – Clean, video, and reline 730' of existing 8" VCP installed in 1980 from 047MH214 to 047MH350.								
			Construction	L Sewer					\$127,500	\$127,500
		Total:							\$127,500	\$127,500
39	BOPU SEWER	900 O'Neil Ave – Replace 310' of 8" VCP installed in 1930 with 8" PVC from 104MH165 to 104MH152.								
			Construction	L Sewer					\$62,000	\$62,000
		Total:							\$62,000	\$62,000
40	BOPU SEWER	2100 E 17th St – Replace 390' of 8" VCP with 8" PVC from 091MH130 to 091MH132.								
			Construction	L Sewer					\$78,000	\$78,000
		Total:							\$78,000	\$78,000
<b>BOPU SEWER TOTALS</b>					<b>2015</b>	<b>2016</b>	<b>2017</b>	<b>2018</b>	<b>2019</b>	<b>5 Year TIP</b>
		Total Federal Funds:			\$0	\$0	\$0	\$0	\$0	\$0
		Total State Funds:			\$0	\$0	\$0	\$0	\$0	\$0
		Total Local Funds:			\$810,558	\$1,876,000	\$2,965,875	\$3,701,600	\$3,612,900	\$12,966,933
		Total:			\$810,558	\$1,876,000	\$2,965,875	\$3,701,600	\$3,612,900	\$12,966,933



TABLE 4 FY 2016 - 2019 TIP PROJECT LISTING

PID:	Agency:	Project Description:	Phase:	Funding Source:	2015	2016	2017	2018	2019	5 Year TIP
95	BOPU WATER	PLAINVIEW (CHAPEL HILL DR. TO BLUE BLUFF RD.) – REPLACE 8" MAIN WITH NEW 8" MAIN 1350'.								
			Construction	L Water	\$356,196					\$356,196
		Total:			\$356,196					\$356,196
126	BOPU WATER	NORTH AMERICAN RD. (Evelyn to Southwest): Replace existing 10" cast main installed in 1970 with new 12" main 700'.								
			Construction	L Water	\$229,031					\$229,031
		Total:			\$229,031					\$229,031
127	BOPU WATER	EAST 22nd STREET (Seymour to Morrie): Replace existing 4" cast main installed in 1930 and 1940 with new 8" main 1050'.								
			Construction	L Water	\$283,880					\$283,880
		Total:			\$283,880					\$283,880
128	BOPU WATER	MOUNTAIN ROAD (Sheridan to King Arthur): Replace existing 8" ductile main installed in 1970 with new 8" main 900'.								
			Construction	L Water	\$213,484					\$213,484
		Total:			\$213,484					\$213,484
122	BOPU WATER	HOMESTEAD AVE (Hanson St to Henderson Dr): Replace 8" ductile main with new 8" main 860'.								
			Construction	L Water	\$203,864					\$203,864
		Total:			\$203,864					\$203,864
121	BOPU WATER	PIERCE AVE (Green River St to Dell Range Blvd): Replace 6" ductile main with new 8" main 1370'.								
			Construction	L Water	\$281,584					\$281,584
		Total:			\$281,584					\$281,584
120	BOPU WATER	HANSON STREET (Old Trail Rd to Henderson Dr) : Replace 8" cast main with new 8" main 860'.								
			Construction	L Water	\$216,093					\$216,093
		Total:			\$216,093					\$216,093
119	BOPU WATER	GRIER BLVD (Old Trail Rd to Henderson Dr): Replace 8" cast main with new 8" main 1025'.								
			Construction	L Water	\$250,653					\$250,653
		Total:			\$250,653					\$250,653
129	BOPU WATER	KING ARTHUR RD (Mountain to Sheridan): Replace existing 6" ductile main installed in 1970 with new 8" main 1050'.								
			Construction	L Water	\$302,682					\$302,682
		Total:			\$302,682					\$302,682

TABLE 4 FY 2016 - 2019 TIP PROJECT LISTING

PID:	Agency:	Project Description:	Phase:	Funding Source:	2015	2016	2017	2018	2019	5 Year TIP
	BOPU WATER	<b>SPECIAL WATER DEVELOPMENT PROJECTS</b>								
			Construction	L Water		\$400,000	\$400,000	\$400,000	\$400,000	\$1,600,000
		<b>Total:</b>				<b>\$400,000</b>	<b>\$400,000</b>	<b>\$400,000</b>	<b>\$400,000</b>	<b>\$1,600,000</b>
130	BOPU WATER	<b>12th ST &amp; COLLEGE RECYCLED WATER BOOSTER STATION:</b> Replace the Variable Frequency Drive (VFD), modify the RTU controls & programming.								
			Construction	L Water		\$13,000				\$13,000
		<b>Total:</b>				<b>\$13,000</b>				<b>\$13,000</b>
	BOPU WATER	<b>FY 16 Well Rehabilitation Project:</b> Replace 4000' of the Happy Jack Well Line from the Happy Jack Crossover to the Happy Jack Meter Vault near the RL Sherard Water Treatment Plant.								
			Construction	L Water		\$800,000				\$800,000
		<b>Total:</b>				<b>\$800,000</b>				<b>\$800,000</b>
131	BOPU WATER	<b>26th ST WATER SYSTEM IMPROVEMENTS: in Conjunction w/ the 26th St Storm Sewer Interceptor Project:</b> Replace 1420' of 4" water main (1944) with 12" water main in 26th Street from Bent Avenue to Carey Avenue, replace 350' of 4" water main (1944) with 8" water main in 26th Street from Reed Avenue to Bent Avenue, 370' of 4" water main (1942) with 8" water main in Reed Ave from 25th Street to 26th Street, and 390' of 4" water main (1937) with 8" water main in 24th Street from Snyder Avenue to Reed Avenue.								
			Construction	L Water		\$630,000				\$630,000
		<b>Total:</b>				<b>\$630,000</b>				<b>\$630,000</b>
132	BOPU WATER	<b>19th STREET (Dey Ave to Morrie Ave)</b> \$477,750 – Snyder Ave to Dey Ave: replace 1050' of 24" water main and 1050' of 4" water main with 8" PVC. \$694,550 – Warren/Central Avenues replace 1510' of existing 4" and 6" water main with 8" PVC water main, 500' of 12" water main with 12" PVC and 1,130 feet of 24" water main with 24".								
			Construction	L Water		\$1,172,300				\$1,172,300
		<b>Total:</b>				<b>\$1,172,300</b>				<b>\$1,172,300</b>
133	BOPU WATER	<b>TURA PKWY (west of Fleischli Pkwy to Westland Rd)</b> Replace 2500' of 8" ductile iron pipe installed in 1970 with a history of 2 main breaks with 8" PVC main. Portions of this water main are out of service because repairs could not be made due to the deteriorated condition of the pipe.								
			Construction	L Water		\$625,000				\$625,000
		<b>Total:</b>				<b>\$625,000</b>				<b>\$625,000</b>
134	BOPU WATER	<b>WESTLAND RD (Westland Ct to Old Happy Jack Rd)</b> Replace 260' of 8" cast iron pipe installed in 1977 with new 8" main with a new tap on 30" PCCP. Abandon an old main and tap to the east. Main is severely deteriorated.								
			Construction	L Water		\$65,000				\$65,000
		<b>Total:</b>				<b>\$65,000</b>				<b>\$65,000</b>

TABLE 4 FY 2016 - 2019 TIP PROJECT LISTING

PID:	Agency:	Project Description:	Phase:	Funding Source:	2015	2016	2017	2018	2019	5 Year TIP
123	BOPU WATER	<b>CAMPSTOOL (Frontier Refinery to east side of North Collge Dr)</b> Replace 6900' of 4" cast iron pipe installed in 1973 with a history of 5 main breaks with 10" PVC with a new casing under North College Ave.	Construction	L Water		\$1,414,500				\$1,414,500
		<b>Total:</b>				<b>\$1,414,500</b>				<b>\$1,414,500</b>
125	BOPU WATER	<b>RAWLINS STREET (Monroe Ave to Cleveland Ave)</b> Replace 800' of existing 8" ductile iron pipe installed in 1981 with a history of 6 main breaks with 8" PVC.	Construction	L Water		\$200,000				\$200,000
		<b>Total:</b>				<b>\$200,000</b>				<b>\$200,000</b>
135	BOPU WATER	<b>BUFFALO RIDGE TANK RE-COATING RROJECT:</b> Re-coat the entire interior and exterior of tank. Coating is over 50 years old, and has exceeded the design life. The existing interior coating system is incompatible with modern coating systems and cannot be repaired. Project will be funded by Drinking Water State Revolving Fund (SRF) Loan with 25% principle forgiveness.	Construction	L Water		\$1,300,000				\$1,300,000
		<b>Total:</b>				<b>\$1,300,000</b>				<b>\$1,300,000</b>
	BOPU WATER	<b>REIMBURSE OVERSIZE WATER MAINS</b>	Construction	L Water			\$300,000	\$300,000	\$300,000	\$900,000
		<b>Total:</b>					<b>\$300,000</b>	<b>\$300,000</b>	<b>\$300,000</b>	<b>\$900,000</b>
81	BOPU WATER	<b>RECYCLE WATER EXTENSION PHASE III:</b> North Park to Mylar Park, Smalley Park and Anderson Elementary (Master Plan 3 Project)	Construction	L Water			\$4,215,200			\$4,215,200
		<b>Total:</b>					<b>\$4,215,200</b>		\$0	<b>\$4,215,200</b>
136	BOPU WATER	<b>SMALL BOOSTER PUMP STATION at North Park to pump to Mylar, Smalley, and Anderson Elementary (Master Plan 4 Project)</b>	Construction	L Water			\$142,200			\$142,200
		<b>Total:</b>					<b>\$142,200</b>		\$0	<b>\$142,200</b>
	BOPU WATER	<b>DISTRIBUTION SYSTEM MONITORING (Master Plan 3 Project)</b>	Construction	L Water			\$100,000	\$1,000,000		\$1,100,000
		<b>Total:</b>					<b>\$100,000</b>	<b>\$1,000,000</b>	\$0	<b>\$1,100,000</b>
137	BOPU WATER	<b>EAST 2ND STREET (Van Lennen to Russell)</b> Replace existing 4" cast main with new 8" main 1720'.	Construction	L Water			\$352,600			\$352,600
		<b>Total:</b>					<b>\$352,600</b>		\$0	<b>\$352,600</b>
85	BOPU WATER	<b>OXFORD DRIVE (Boston Road to Durham Rd):</b> Replace existing 6" cast main with new 8" main 1200'.	Construction	L Water			\$246,000			\$246,000
		<b>Total:</b>					<b>\$246,000</b>			<b>\$246,000</b>

**TABLE 4 FY 2016 - 2019 TIP PROJECT LISTING**

PID:	Agency:	Project Description:	Phase:	Funding Source:	2015	2016	2017	2018	2019	5 Year TIP
138	BOPU WATER	EAST 17TH STREET (Hugar Ave to Holliday Park): Replace existing 4" cast main with new 8" main 1050'.								
			Construction	L Water			\$215,250			\$215,250
		Total:					\$215,250			\$215,250
139	BOPU WATER	WEST LINCOLNWAY (Candlewood Suites to Cutler Rd): Replace existing 6" cast main with new 8" main 880'.								
			Construction	L Water			\$180,400			\$180,400
		Total:					\$180,400			\$180,400
94	BOPU WATER	ONTARIO AVE. (RIO VERDE ST. TO DELL RANGE) – Replace existing 6" main with new 8" main 1300'.								
			Construction	L Water			\$266,500			\$266,500
		Total:					\$266,500			\$266,500
83	BOPU WATER	APACHE STREET (Ogden Rd to Mountain Rd): Replace existing 8" main with new 8" main 1800'.								
			Construction	L Water			\$369,000			
		Total:					\$369,000			
140	BOPU WATER	FREDERICK DRIVE (Melton St to Hamilton Ave): Replace existing 6" cast main with 8" main 950'.								
			Construction	L Water			\$194,750			\$194,750
		Total:					\$194,750			\$194,750
141	BOPU WATER	WEST 8TH STREET (W 9th St to Thomes Ave): Replace existing 6" cast main with new 8" main 950'.								
			Construction	L Water			\$194,750			\$194,750
		Total:					\$194,750			\$194,750
142	BOPU WATER	SNYDER AVE (W 5th St to W 7th St): Replace existing 6" cast main with new 8" main 720'.								
			Construction	L Water			\$147,600			\$147,600
		Total:					\$147,600			\$147,600
143	BOPU WATER	EAST 22nd STREET (Seymore Ave to Alexander Ave): Replace existing 4" and 8" main with new 8" main 2100'.								
			Construction	L Water				\$430,500		\$430,500
		Total:						\$430,500		\$430,500

TABLE 4 FY 2016 - 2019 TIP PROJECT LISTING

PID:	Agency:	Project Description:	Phase:	Funding Source:	2015	2016	2017	2018	2019	5 Year TIP
144	BOPU WATER	MCCOMB AVE (W. Pershing to W 6th Ave): Replace existing 4", 6", and 8" mains with new 8" main 2400'.								
		Construction	L	Water				\$492,000		\$492,000
		Total:						\$492,000		\$492,000
145	BOPU WATER	MCCANN AVE/COUNTRY CLUB AVE (E Lincolnway to Holmes St): Replace existing 8" cast main with new 8" main 860'.								
		Construction	L	Water				\$176,300		\$176,300
		Total:						\$176,300		\$176,300
146	BOPU WATER	O'NEIL AVE (W 9th St to W 10th St): Replace existing 4" cast main with new 8" main 370'.								
		Construction	L	Water				\$75,850		\$75,850
		Total:						\$75,850		\$75,850
147	BOPU WATER	WEST 7TH STREET (Snyder Ave to Stanfield Ave): Replace existing 4" cast main with new 8" main 1520'.								
		Construction	L	Water				\$331,600		\$331,600
		Total:						\$331,600		\$331,600
	BOPU WATER	REPLACE 2-3 RTU's WITH NEW ACE UNITS								
		Construction	L	Water				\$63,900		\$63,900
		Total:						\$63,900		\$63,900
148	BOPU WATER	WEST 6TH STREET (Snyder Ave to Stanfield Ave): Replace existing 4" cast main with new 8" main 1325'.								
		Construction	L	Water				\$271,625		\$271,625
		Total:						\$271,625		\$271,625
	BOPU WATER	SWAN RANCH RESERVOIR #2 (Master Plan 22 Project)								
		Construction	L	Water					\$6,000,000	\$6,000,000
		Total:							\$6,000,000	\$6,000,000
118	BOPU WATER	Pressure Management Project Phase II: City North, Central, and South Zones (Master Plan 17 Project)								
		Construction	L	Water					\$2,000,000	\$2,000,000
		Total:							\$2,000,000	\$2,000,000
	BOPU WATER	WATER SYSTEM REHABS								
		Construction	L	Water					\$2,300,000	\$2,300,000
		Total:							\$2,300,000	\$2,300,000

TABLE 4 FY 2016 - 2019 TIP PROJECT LISTING

PID:	Agency:	Project Description:	Phase:	Funding Source:	2015	2016	2017	2018	2019	5 Year TIP
BOPU WATER TOTALS					2015	2016	2017	2018	2019	5 Year TIP
Total Federal Funds:					\$0	\$0	\$0	\$0	\$0	\$0
Total State Funds:					\$0	\$0	\$0	\$0	\$0	\$0
Total Local Funds:					\$2,337,467	\$6,619,800	\$7,324,250	\$3,541,775	\$11,000,000	\$30,823,292
Total:					\$2,337,467	\$6,619,800	\$7,324,250	\$3,541,775	\$11,000,000	\$30,823,292

**TABLE 5**  
**ESTIMATE OF AVAILABLE FUNDS FOR FY 2016-2019**  
**TRANSPORTATION PROJECTS**  
Appendix B explains abbreviations used in the Funding Source.

FUNDING CATEGORY	FY 2016	FY 2017	FY 2018	FY 2019	TOTAL
<b>FEDERAL</b>					
FTA	\$1,759,484	\$1,333,449	\$1,362,215	\$1,400,228	<b>\$5,855,375</b>
FAA	\$5,075,000	\$0	\$450,000	\$700,000	<b>\$6,225,000</b>
NHPP	\$7,293,852	\$0	\$6,252,040	\$6,585,955	<b>\$20,131,847</b>
STP-U	\$3,211,333	\$0	\$0	\$0	<b>\$3,211,333</b>
TAP Grant	\$200,000	\$0	\$0	\$0	<b>\$200,000</b>
TIGER Grant	\$8,831,925	\$0	\$0	\$0	<b>\$8,831,925</b>
RHC	\$217,176	\$0	\$0	\$0	<b>\$217,176</b>
<b>TOTAL FEDERAL FUNDS</b>	<b>\$26,588,770</b>	<b>\$1,333,449</b>	<b>\$8,064,255</b>	<b>\$8,686,183</b>	<b>\$44,672,656</b>
<b>STATE</b>					
Section 5311	\$110,000	\$110,000	\$110,000	\$110,000	<b>\$440,000</b>
Section IIIB	\$6,350	\$6,350	\$6,350	\$6,350	<b>\$25,400</b>
SMatchAir	\$3,145,500	\$0	\$18,000	\$28,000	<b>\$3,191,500</b>
SLIB	\$2,300,000	\$0	\$0	\$0	<b>\$2,300,000</b>
State Match High	\$766,543	\$0	\$657,054	\$692,147	<b>\$2,115,744</b>
WBC	\$3,000,000	\$0	\$0	\$0	<b>\$3,000,000</b>
CMP	\$20,000	\$0	\$0	\$0	<b>\$20,000</b>
<b>TOTAL STATE FUNDS</b>	<b>\$9,348,393</b>	<b>\$116,350</b>	<b>\$791,404</b>	<b>\$836,497</b>	<b>\$11,092,644</b>
<b>LOCAL</b>					
Airport	\$9,887,834	\$0	\$12,000	\$18,667	<b>\$9,918,501</b>
BOPU Sewer	\$2,666,500	\$4,205,875	\$3,701,600	\$3,612,900	<b>\$14,186,875</b>
BOPU Water	\$8,259,800	\$7,836,750	\$3,541,775	\$11,000,000	<b>\$30,638,325</b>
BOPU	\$1,515,873	\$1,000,000	\$0	\$0	<b>\$2,515,873</b>
City Funds	\$12,393,442	\$9,570,000	\$6,565,000	\$9,350,000	<b>\$37,878,442</b>
MatchTrans	\$972,634	\$926,781	\$894,841	\$915,430	<b>\$3,709,685</b>
CRF	\$136,475	\$0	\$0	\$0	<b>\$136,475</b>
Private	\$375,000	\$0	\$0	\$0	<b>\$375,000</b>
<b>TOTAL LOCAL FUNDS</b>	<b>\$36,207,558</b>	<b>\$23,539,406</b>	<b>\$14,715,216</b>	<b>\$24,896,997</b>	<b>\$99,359,176</b>
<b>YEAR</b>	<b>FY 2016</b>	<b>FY 2017</b>	<b>FY 2018</b>	<b>FY 2019</b>	<b>TOTAL</b>
<b>TOTAL FEDERAL FUNDS</b>	<b>\$26,588,770</b>	<b>\$1,333,449</b>	<b>\$8,064,255</b>	<b>\$8,686,183</b>	<b>\$44,672,656</b>
<b>TOTAL STATE FUNDS</b>	<b>\$9,348,393</b>	<b>\$116,350</b>	<b>\$791,404</b>	<b>\$836,497</b>	<b>\$11,092,644</b>
<b>TOTAL LOCAL FUNDS</b>	<b>\$36,207,558</b>	<b>\$23,539,406</b>	<b>\$14,715,216</b>	<b>\$24,896,997</b>	<b>\$99,359,176</b>
<b>GRAND TOTAL</b>	<b>\$72,144,721</b>	<b>\$24,989,205</b>	<b>\$23,570,874</b>	<b>\$34,419,677</b>	<b>\$155,124,477</b>

## 4 – Pavement Management System

The pavement management analysis (PMA) program reviews all of the paved streets in the Cheyenne area. A PMA is a computerized information system designed to assist Cheyenne's decision-makers in the process of managing the network of streets. The PMA was originally started, operated and maintained by the Metropolitan Planning Organization (Cheyenne MPO), but it was turned over to the City Public Works Department in 2009. This computer program can store, retrieve, and process pavement-related condition inventory data, allowing the user to analyze the current condition, future performance, and expected monetary needs for Cheyenne's pavement network.

The accumulated investment of public funds expended to construct and maintain a pavement network generally amounts to a substantial figure. For example, if the average reconstruction cost per centerline mile is \$1,000,000 and a pavement network has 300 centerline miles, then the replacement cost of the network is in the order of \$150 million.

A pavement network is therefore a valuable asset to the population that it serves, and it should be managed such that the value of the asset is maintained at an optimal level over the long-term. In this regard, experience has shown that over time it is less expensive to invest in preventative maintenance and/or rehabilitation on an ongoing basis rather than in sporadic reconstruction.

In order to implement this less expensive approach, information containing the condition of the network, its rate of deterioration, and the impact of maintenance and rehabilitation efforts on pavement serviceability levels is required. It is therefore necessary to monitor the performance of each section of the network on an ongoing basis. This ongoing monitoring is a key component of a comprehensive pavement management system.

A program has been developed to utilize the Optional 1% Sales Tax set aside for street maintenance. With each tax election more funding is directed for street maintenance. Table 6 lists the streets proposed to receive maintenance attention in the City.



**Table 6**  
**2016 City Pavement Management Program**  
**Subject to Change**

**2015-2016 Overlay**

Street	From	To
Double Tree Ln	Vandehie Ave	Vandehie Ave
Hacker Ct	Manewal Dr	Education Dr
Hacker Circle	Hacker Ct	EOP
Akes Ave	Manewal Dr	Hacker Ct
Hynds Blvd	W. 2nd Ave	W. 8th Ave
7th Ave	Hynds Ave	Evans Ave
Creighton St	Evers Blvd	Bishop Blvd
Ridgeland St	Evers Blvd	Bishop Blvd
Hirst St	Evers Blvd	Moreland Ave
Evergreen St	Evers Blvd	Golden Hill
Golden Hill ST	Evers Blvd	Moreland Ave
Ranger Dr	Evers Blvd	Vandehie Ave
Moreland Ave	Vandehie Ave	Ridgeland St
Redmond Rd	EOP	EOP
Kiowa St	Redmond Rd	Seminole Rd
Ogallala Place	Del Range Blvd	Seminole Rd
W. 30th St	Reandall	Central Ave

**2015 Slurry**

Street	From	To
Demming Dr/Walterschied	Ames	W Fox Farm
W 5th St/W 4 th St	Parsley Ave	Central Ave
Converse Ave	E lincoln Way	19th St
E 13th St	Logan Ave	EOP
E 9th St	E 8th St	EOP
Spirit Ln	Gardenia Dr	Legend Ln
Wispering Hills Ln	Gardenia Dr	Legend Ln
Legend Ln	Feather Ridge	Spirit Ln
Feather Ridge	Legend Ln	Wispering Hills Ln
Whitewater Ct	Gardenia Dr	Gardenia Dr
Brave Ct	Spirit Ln	Spirit Ln
Paradise Pt	Spirit Ln	Spirit Ln
Peach Pt	Spirit Ln	Spirit Ln
Point Pinacle	Gardenia Dr	Gardenia Dr
Arlene Point	Legacy Pkwy	Legacy Pkwy
Lorilyn Point	Legacy Pkwy	Legacy Pkwy
Danni Grace Cir	Legacy Pkwy	Legacy Pkwy
Rozetta Cir	Legacy Pkwy	Legacy Pkwy

**2016-2017 Overlay**

Street	From	To
Waltercheid Blvd	W. Fox Farm	W. College Drive
E. 19th	Alexander Ave	Logan Ave
E 22nd St	Logan Ave	Carbon Ave
E 21 st St	Logan Ave	E. 19th St
Rayor Ave	Pershing Blvd	E. 19th St
Albany Ave	Pershing Blvd	E. 22nd St
E 25th St	Central Ave	Seymour Ave
E 26th St	Central Ave	Seymour Ave

**2015-2016**

Engineering	From	To
Street	Dry Creek	Morrie Ave
19 th St	Pershing Blvd	NationWay
Logan Ave		

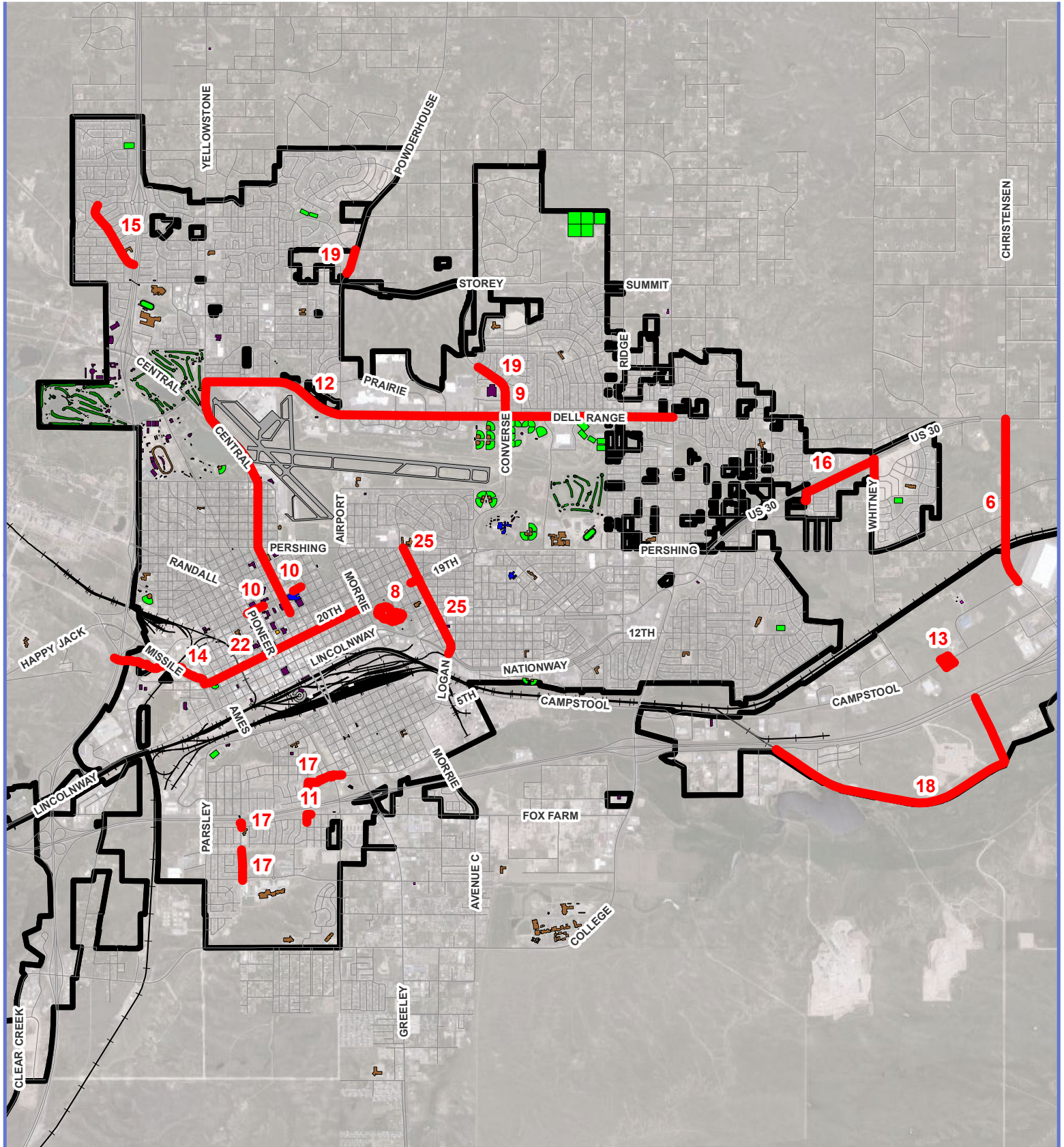
## Appendix A - Funding Definitions

Federal	FAA	Federal Aviation Administration
Federal	FTA	Federal Transit Administration
Federal	MPO	Metropolitan Planning Organization
Federal	NHPP	National Highway Performance Program
Federal	RHC	Rail Highway Crossings
Federal	SRTS	Safe Routes to School
Federal	STP-U	Surface Transportation Program - Urban
Federal	TAP	Transportation Alternatives Program
Federal	TIGER	Transportation Investment Generating Economic Recovery
Non-Federal	Airport	Airport Board
Non-Federal	BOPUS	Board of Public Utilities - Sewer Projects
Non-Federal	BOPUW	Board of Public Utilities - Water Projects
Non-Federal	City	City Funds
Non-Federal	City Gen	City General Fund Account
Non-Federal	CMP	Contract Maintenance Program
Non-Federal	CRF	County Road Fund
Non-Federal	MATCHTRANS	Local Transit Matching Funds
Non-Federal	Private	Private Funds
Non-Federal	Section IIIB	State Transit Funding
Non-Federal	Section 5311	State Transit Funding
Non-Federal	Slib	State Loan and Investment Board
Non-Federal	SMatchAir	State Matching Funds - Airport Projects
Non-Federal	SMatchHigh	State Matching Funds - Highway Projects
Non-Federal	WBC	Wyoming Business Council

## Appendix B – Maps

# 2016 - 2019 Transportation Improvement Program

## CITY of CHEYENNE



2

Miles

16-19 City

City / County Boundary

Railroad Tracks

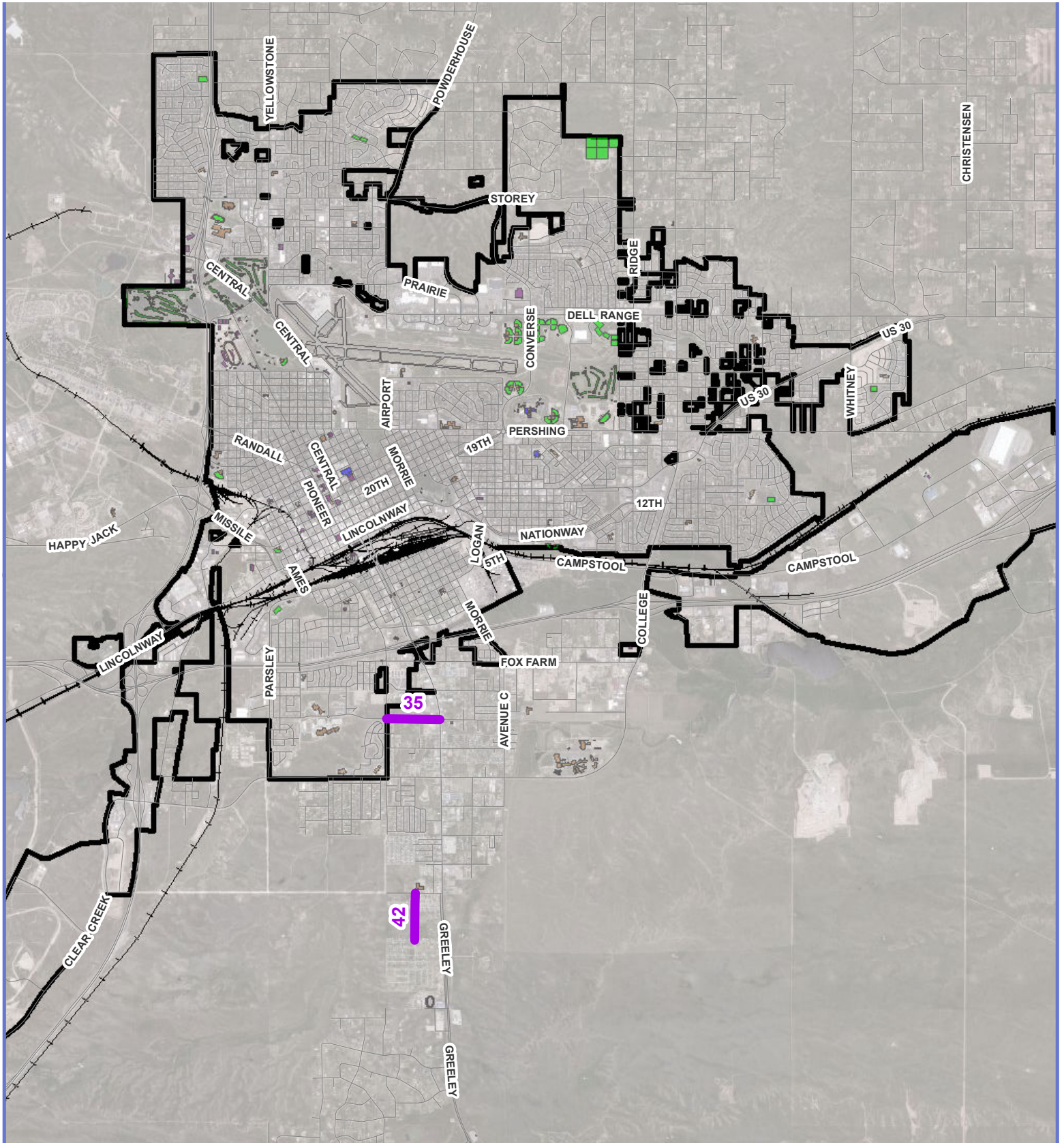
This map/data is made possible through the Cheyenne and Laramie County Cooperative GIS (CLCCGIS) Program and is for display purposes only. The CLCCGIS invokes its sovereign and governmental immunity in allowing access to or use of this data, makes no warranties as to the validity, and assumes no liability associated with the use or misuse of this information.

Date: 6/16/2015



# 2016 - 2019 Transportation Improvement Program

## Laramie County



2.5

Miles

16-19 County

City / County Boundary

Railroad Tracks

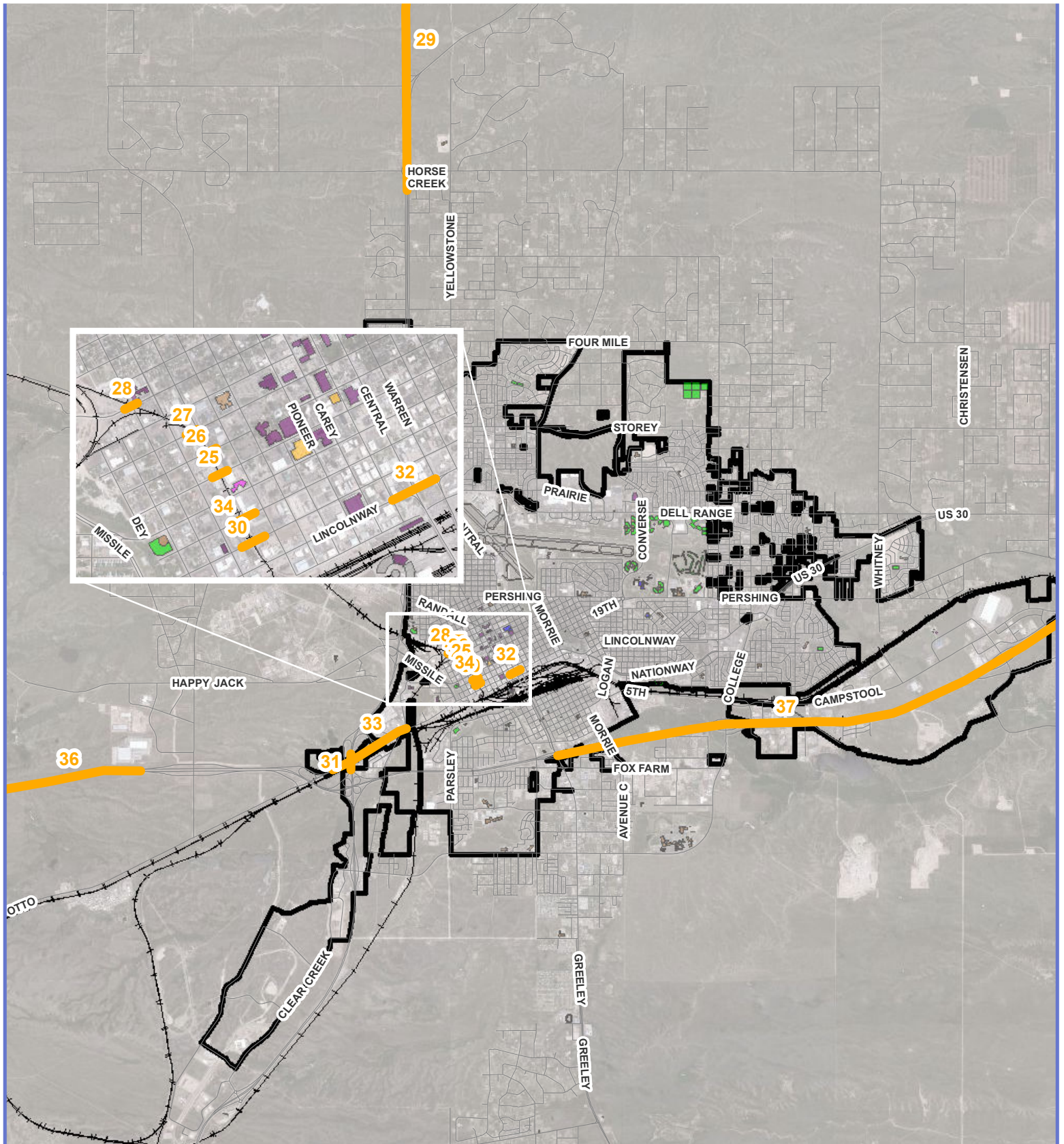
This map/data is made possible through the Cheyenne and Laramie County Cooperative GIS (CLCCGIS) Program and is for display purposes only. The CLCCGIS invokes its sovereign and governmental immunity in allowing access to or use of this data, makes no warranties as to the validity, and assumes no liability associated with the use or misuse of this information.

Date: 6/16/2015



# 2016 - 2019 Transportation Improvement Program

## WYDOT



3.5

Miles

16-19 WYDOT

City / County Boundary

Railroad Tracks

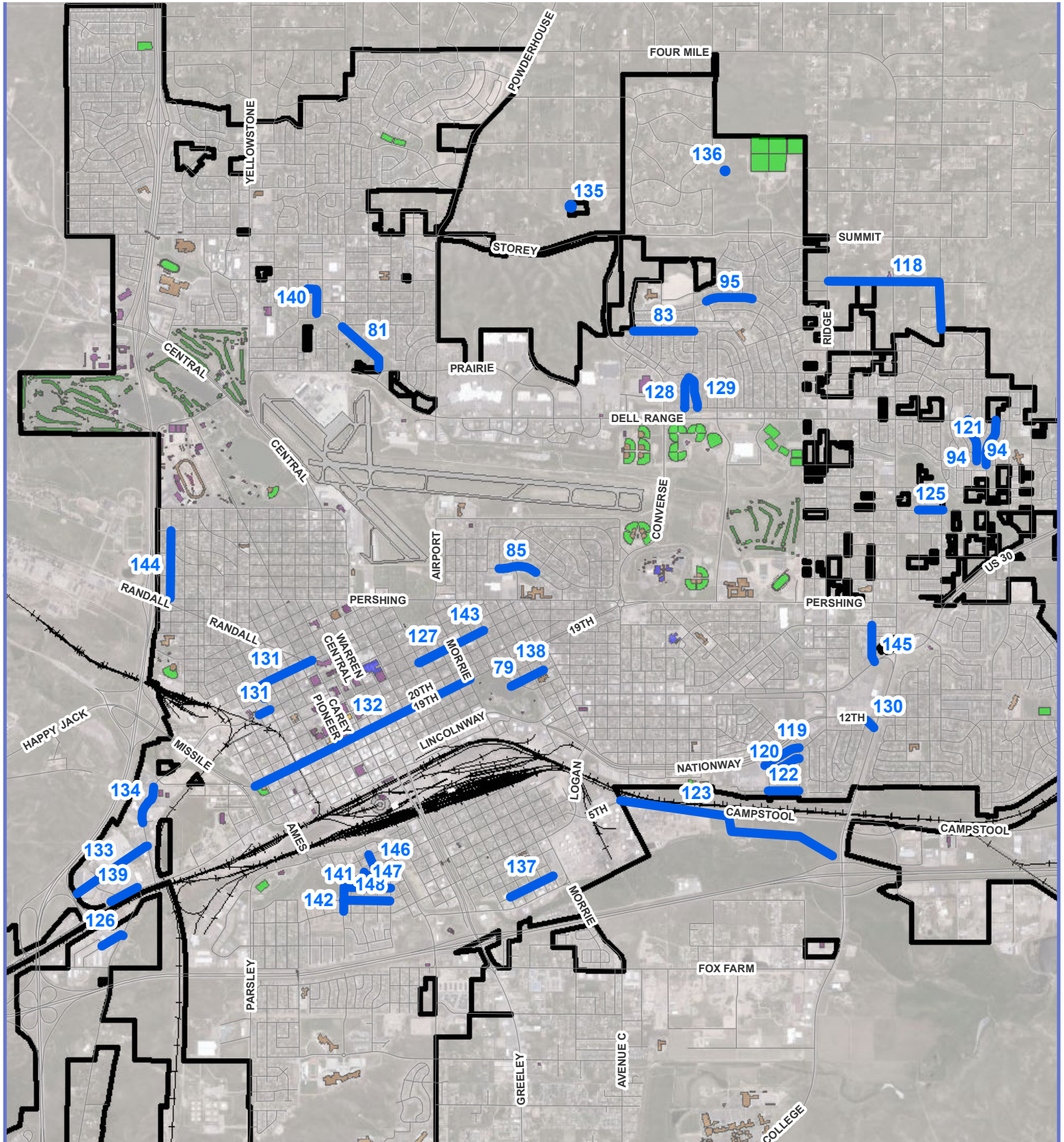
This map/data is made possible through the Cheyenne and Laramie County Cooperative GIS (CLCCGIS) Program and is for display purposes only. The CLCCGIS invokes its sovereign and governmental immunity in allowing access to or use of this data, makes no warranties as to the validity, and assumes no liability associated with the use or misuse of this information.

Date: 6/16/2015



# 2016 - 2019 Transportation Improvement Program

## BOPU WATER



1.5

Miles

16-19 Water

City / County Boundary

Railroad Tracks

This map/data is made possible through the Cheyenne and Laramie County Cooperative GIS (CLCCGIS) Program and is for display purposes only. The CLCCGIS invokes its sovereign and governmental immunity in allowing access to or use of this data, makes no warranties as to the validity, and assumes no liability associated with the use or misuse of this information.

Date: 6/16/2015





Miles

 $\vdash$ 

## Railroad Tracks



## AMENDMENT 1 AUGUST 27

TABLE 1

## FY 2015 PROJECTS WHICH HAVE STARTED BY JUNE 2015 (For Information Only)

***FY 2015 FEDERALLY FUNDED PROJECTS CHEYENNE URBAN AREA***

TRANSIT	TRANSIT BUSES		
	FEDERAL	FTA 5307	\$324,000
	LOCAL	MATCHTRAN	\$81,000
	Total Federal Funds:		<b>\$324,000</b>
	Total:		<b>\$405,000</b>
TRANSIT	GENERAL OPERATING ASSISTANCE & CAPITAL		
	FEDERAL	FTA 5307	\$945,376
	STATE	Section IIIB	\$6,350
	STATE	Section 5311	\$110,000
	LOCAL	MATCHTRAN	\$758,661
	Total Federal Funds:		<b>\$945,376</b>
	Total:		<b>\$1,820,387</b>
COUNTY	SAFE ROUTES TO SCHOOL AFFLERBACH		
	FEDERAL	SRTS	\$200,000
	Total Federal Funds:		<b>\$200,000</b>
	Total:		<b>\$200,000</b>
AIRPORT BOARD	DESIGN/RECONSTRUCT TAXIWAY		
	FEDERAL	FAA	\$4,381,250
	STATE	SMATCHAIR	\$138,355
	LOCAL	Airport	\$92,237
	Total Federal Funds:		<b>\$4,381,250</b>
	Total:		<b>\$4,611,842</b>

**TOTAL FUNDS FOR 2015 FEDERALLY FUNDED PROJECTS**

FEDERAL	FTA 5307	\$1,269,376
FEDERAL	SRTS	\$200,000
FEDERAL	FAA	\$4,381,250
<b>FEDERAL TOTAL</b>		<b>\$5,850,626</b>
STATE	SECTION IIIB	\$6,350
STATE	SECTION 5311	\$110,000
STATE	SMATCHAIR	\$138,355
<b>STATE TOTAL</b>		<b>\$254,705</b>
LOCAL	MATCHTRAN	\$839,661
LOCAL	AIRPORT	\$92,237
<b>LOCAL TOTAL</b>		<b>\$931,898</b>
<b>TOTAL</b>		<b>\$7,037,229</b>

TABLE 1

## FY 2015 PROJECTS WHICH HAVE STARTED BY JUNE 2015 (For Information Only)

***FY 2015 STATE & LOCALLY FUNDED PROJECTS CHEYENNE URBAN AREA***

CITY	19th Street Rehabilitation			
		LOCAL	SALES TAX	\$280,271
		LOCAL	BOPU	\$95,266
	<b>Total:</b>			<b>\$375,537</b>
CITY	LOGAN - NATIONWAY TO PERSHING (19TH - HUGUR TO LOGAN INCLUDED)			
		LOCAL	WATER	\$72,623
		LOCAL	SEWER	\$25,516
	<b>Total:</b>			<b>\$98,139</b>
CITY	STREET AND PAVEMENT WORK			
		LOCAL	SALES TAX	\$4,350,000
		LOCAL	CITY RES	\$1,500,000
	<b>Total:</b>			<b>\$5,850,000</b>
CITY	WYDOT AND FEDERAL PROJECTS MATCHES			
		LOCAL	SALES TAX	\$375,000
	<b>Total:</b>			<b>\$375,000</b>
CITY	1% CONSTRUCTION MANAGEMENT AND ADMINISTRATION			
		LOCAL	SALES TAX	\$475,000
	<b>Total:</b>			<b>\$475,000</b>
CITY	STORMWATER DRAINAGE MAINTENANCE AND REPAIR PROJECTS			
		LOCAL	SALES TAX	\$500,000
	<b>Total:</b>			<b>\$500,000</b>
AIRPORT BOARD	2015 Aviation Encouragement			
		STATE	SMatchAir	\$5,000
	<b>Total:</b>			<b>\$5,000</b>
AIRPORT BOARD	Seal Coat and Mark Airside Pavements			
		STATE	SMatchAir	\$315,000
		LOCAL	Airport	\$35,000
	<b>Total:</b>			<b>\$350,000</b>
BOPU SEWER	SEWER			
		LOCAL	SEWER	\$810,558
	<b>Total:</b>			<b>\$810,558</b>
BOPU WATER	WATER			
		LOCAL	WATER	\$2,337,467
	<b>Total:</b>			<b>\$2,337,467</b>
<b>TOTAL FUNDS FOR 2015 STATE AND LOCALLY FUNDED PROJECTS</b>				
		STATE	SMATCHAIR	\$320,000
			<b>STATE TOTAL</b>	<b>\$320,000</b>
		LOCAL	SALES TAX	\$5,980,271
		LOCAL	CITY RES	\$1,500,000
		LOCAL	BOPU	\$95,266
		LOCAL	WATER	\$2,410,090
		LOCAL	SEWER	\$836,074
		LOCAL	AIRPORT	\$35,000
			<b>LOCAL TOTAL</b>	<b>\$10,856,701</b>
			<b>TOTAL</b>	<b>\$11,176,701</b>
<b>TOTAL FUNDS FOR 2015 PROJECTS</b>				
			<b>FEDERAL TOTAL</b>	<b>\$5,850,626</b>
			<b>STATE TOTAL</b>	<b>\$574,705</b>
			<b>LOCAL TOTAL</b>	<b>\$11,788,599</b>
			<b>TOTAL</b>	<b>\$18,213,930</b>

TABLE 2

## FISCAL YEAR 2016 FEDERALLY FUNDED PROJECTS CHEYENNE URBAN AREA

CITY	BNSF Rail Trail			
		FEDERAL	TAP	\$200,000
		LOCAL	SALES TAX	\$50,000
		Total Federal Funds:		\$200,000
		Total:		\$250,000
CITY	The Christensen Project			
		FEDERAL	TIGER	\$8,831,925
		FEDERAL	STPU	\$1,500,000
		STATE	WBC	\$3,000,000
		LOCAL	PRIVATE	\$375,000
		LOCAL	SALES TAX	\$225,000
		LOCAL	SALES TAX	\$158,000
		LOCAL	BOPU	\$529,100
		Total Federal Funds:		\$10,331,925
		Total:		\$14,619,025
TRANSIT	TRANSIT BUSES			
		FEDERAL	FTA 5307	\$325,600
		LOCAL	MATCHTRAN	\$81,400
		Total Federal Funds:		\$325,600
		Total:		\$407,000
TRANSIT	UPGRADE/BUILD BUS STOPS			
		FEDERAL	FTA 5307	\$176,000
		LOCAL	MATCHTRAN	\$44,000
		Total Federal Funds:		\$176,000
		Total:		\$220,000
TRANSIT	SURVEILLANCE UPGRADE			
		FEDERAL	FTA 5307	\$56,000
		LOCAL	MATCHTRAN	\$14,000
		Total Federal Funds:		\$56,000
		Total:		\$70,000
TRANSIT	FAREBOXES			
		FEDERAL	FTA 5307	\$237,600
		LOCAL	MATCHTRAN	\$59,400
		Total Federal Funds:		\$237,600
		Total:		\$297,000
TRANSIT	GENERAL OPERATING ASSISTANCE & CAPITAL			
		FEDERAL	FTA 5307	\$964,284
		STATE	Section IIIB	\$6,350
		STATE	Section 5311	\$110,000
		LOCAL	MATCHTRAN	\$773,834
		Total Federal Funds:		\$964,284
		Total:		\$1,854,468
COUNTY	WEST ALLISON ROAD RECONSTRUCTION			
		FEDERAL	STPU	\$1,711,333
		LOCAL	CRF	\$136,475
		Total Federal Funds:		\$1,711,333
		Total:		\$1,847,808
AIRPORT BOARD	Construct Commercial Apron			
		FEDERAL	FAA	\$3,925,000
		STATE	SMatchAir	\$157,000
		LOCAL	Airport	\$104,667
		Total Federal Funds:		\$3,925,000
AIRPORT BOARD	TERMINAL CONSTRUCTION			
		FEDERAL	FAA	\$1,150,000
		STATE	SMatchAir	\$2,790,500
		LOCAL	Airport	\$9,761,167
		Total Federal Funds:		\$1,150,000
		Total:		\$13,701,667

TABLE 2

## FISCAL YEAR 2016 FEDERALLY FUNDED PROJECTS CHEYENNE URBAN AREA

WYDOT	I-25 North Overlay both lanes MP 16-25			
		FEDERAL	NHPP	\$7,293,852
		STATE	S MATCH HIGH	\$766,543
		Total Federal Funds:		\$7,293,852
		Total:		\$8,060,395
WYDOT	RAILROAD CROSSING UPGRADES: 22ND STREET			
		FEDERAL	RHC	\$72,392
		LOCAL	SALES TAX	\$7,608
		Total Federal Funds:		\$72,392
		Total:		\$80,000
WYDOT	RAILROAD CROSSING UPGRADES: 21ST STREET			
		FEDERAL	RHC	\$72,392
		LOCAL	SALES TAX	\$7,608
		Total Federal Funds:		\$72,392
		Total:		\$80,000
WYDOT	RAILROAD CROSSING UPGRADES: 20TH STREET			
		FEDERAL	RHC	\$72,392
		LOCAL	SALES TAX	\$7,608
		Total Federal Funds:		\$72,392
		Total:		\$80,000

TOTAL FUNDS FOR 2016 FEDERALLY FUNDED PROJECTS			
	FEDERAL	TAP	\$200,000
	FEDERAL	TIGER	\$8,831,925
	FEDERAL	STPU	\$3,211,333
	FEDERAL	FTA 5307	\$1,759,484
	FEDERAL	FAA	\$5,075,000
	FEDERAL	NHPP	\$7,293,852
	FEDERAL	RHC	\$217,176
	FEDERAL TOTAL		\$26,588,770
	STATE	WBC	\$3,000,000
	STATE	SECTION IIIB	\$6,350
	STATE	SECTION 5311	\$110,000
	STATE	SMATCHAIR	\$2,947,500
	STATE	S MATCH HIGH	\$766,543
	STATE TOTAL		\$6,830,393
	LOCAL	SALES TAX	\$455,824
	LOCAL	BOPU	\$529,100
	LOCAL	PRIVATE	\$375,000
	LOCAL	MATCHTRAN	\$972,634
	LOCAL	CRF	\$136,475
	LOCAL	AIRPORT	\$9,865,834
	LOCAL TOTAL		\$12,334,867
	TOTAL		\$45,754,030

**TABLE 3**  
**FISCAL YEAR 2016 STATE & LOCALLY FUNDED PROJECTS CHEYENNE URBAN AREA**

CITY	West Cheyenne Greenway Extension			
		LOCAL	SALES TAX	\$40,000
	<b>Total:</b>			<b>\$40,000</b>
CITY	Evers Blvd., Bishop to Vandehei			
		LOCAL	WATER	\$100,000
		LOCAL	SEWER	\$248,000
	<b>Total:</b>			<b>\$348,000</b>
CITY	Campstool & Dry Creek Culverts			
		LOCAL	SALES TAX	\$110,000
	<b>Total:</b>			<b>\$110,000</b>
CITY	Traffic Signal Fiber Optics			
		LOCAL	SALES TAX	\$100,000
		STATE	CMP	\$20,000
	<b>Total:</b>			<b>\$120,000</b>
CITY	Fox Farm & Stanfield Drainage Improvements			
		LOCAL	SALES TAX	\$100,000
	<b>Total:</b>			<b>\$100,000</b>
CITY	19th Street Rehabilitation			
		LOCAL	SALES TAX	\$2,327,618
		LOCAL	BOPU	\$986,773
	<b>Total:</b>			<b>\$3,314,391</b>
CITY	24th St. Signal Replacements (Pioneer, Carey, Evans)			
		LOCAL	SALES TAX	\$20,000
		LOCAL	SALES TAX	\$450,000
	<b>Total:</b>			<b>\$470,000</b>
CITY	Lake Minnehaha Phase 2/Holliday Basin Phase 1			
		STATE	SLIB	\$2,300,000
	<b>Total:</b>			<b>\$2,300,000</b>
CITY	STREET AND PAVEMENT WORK			
		LOCAL	SALES TAX	\$4,550,000
	<b>Total:</b>			<b>\$4,550,000</b>
CITY	1% CONSTRUCTION MANAGEMENT AND ADMINISTRATION			
		LOCAL	SALES TAX	\$550,000
	<b>Total:</b>			<b>\$550,000</b>
CITY	STORMWATER DRAINAGE MAINTENANCE AND REPAIR PROJECTS			
		LOCAL	SALES TAX	\$550,000
	<b>Total:</b>			<b>\$550,000</b>
CITY	LOGAN - NATIONWAY TO PERSHING (19TH - HUGUR TO LOGAN INCLUDED)			
		LOCAL	SALES TAX	\$240,000
		LOCAL	SALES TAX	\$2,900,000
		LOCAL	WATER	\$1,540,000
		LOCAL	SEWER	\$542,500
	<b>Total:</b>			<b>\$5,222,500</b>

TABLE 3

**FISCAL YEAR 2016 STATE & LOCALLY FUNDED PROJECTS CHEYENNE URBAN AREA**

<b>AIRPORT BOARD</b>	<b>Relocate Distance Remaining Signs &amp; Remove Arrester Barrier</b>	STATE	SMatchAir	\$198,000
		LOCAL	AIRPORT	\$22,000
		<b>Total:</b>		<b>\$220,000</b>
<b>BOPU SEWER</b>	<b>GENERAL SEWER</b>	LOCAL	SEWER	\$1,876,000
		<b>Total:</b>		<b>\$1,876,000</b>
<b>BOPU WATER</b>	<b>BOPU WATER</b>	LOCAL	WATER	\$6,619,800
		<b>Total:</b>		<b>\$6,619,800</b>

**TOTAL FUNDS FOR 2016 STATE AND LOCALLY FUNDED PROJECTS**

STATE	CMP	\$20,000
STATE	SLIB	\$2,300,000
STATE	SMATCHAIR	\$198,000
	<b>STATE TOTAL</b>	<b>\$2,518,000</b>
LOCAL	SALES TAX	\$11,937,618
LOCAL	BOPU	\$986,773
LOCAL	WATER	\$8,259,800
LOCAL	SEWER	\$2,666,500
LOCAL	AIRPORT	\$22,000
	<b>LOCAL TOTAL</b>	<b>\$23,872,691</b>
	<b>TOTAL</b>	<b>\$26,390,691</b>

TABLE 4 FY 2016 - 2019 TIP PROJECT LISTING

PID:	Agency:	Project Description:	Phase:	Funding:	2015	2016	2017	2018	2019	5 Year TIP
14	CITY	West Cheyenne Greenway Extension								
		MLK Jr. Park to I-25 Design	L	SALES TAX		\$40,000				\$40,000
		MLK Jr. Park to Westland Rd	L	SALES TAX			\$225,000			\$225,000
		Total Federal Funds:								
		Total:					\$40,000	\$225,000		\$265,000
17	CITY	South Cheyenne Greenway								
		Cribbon: I-80 to Allison; Partoyan to Deming	L	SALES TAX			\$225,000			\$225,000
		Total Federal Funds:								
		Total:						\$225,000		\$225,000
19	CITY	North Cheyenne Greenway - Powderhouse: Storey to Gardenia; Converse: Grandview to Mason Way								
		Construction	L	SALES TAX			\$220,000			\$220,000
		Total Federal Funds:								
		Total:						\$220,000		\$220,000
16	CITY	Saddle Ridge Greenway Connector								
		Construction	F	TAP	\$275,000					\$275,000
		Construction	L	SALES TAX	\$55,000					\$55,000
		Total Federal Funds:				\$275,000				
		Total:				\$330,000				\$330,000
18	CITY	BNSF Rail Trail								
		Construction	F	TAP		\$200,000				\$200,000
		Construction	L	SALES TAX		\$50,000				\$50,000
		Total Federal Funds:					\$200,000			
Total:					\$250,000			\$250,000		
6	CITY	The Christensen Project: A Bridge to Prosperity: Construction of Christensen Road between Commerce Circle and US 30, to include a bridge over the Union Pacific.								
		Construction	F	TIGER		\$8,831,925				\$8,831,925
		Construction	F	STPU		\$1,500,000				\$1,500,000
		Construction	S	WBC		\$3,000,000				\$3,000,000
		Construction	P	PRIVATE		\$375,000				\$375,000
		Construction	L	SALES TAX		\$225,000				\$225,000
		Construction	L	SALES TAX		\$158,000				\$158,000
		Construction	L	BOPU		\$529,100				\$529,100
		Total Federal Funds:					\$10,331,925			\$10,331,925
		Total:					\$14,619,025			\$14,619,025



TABLE 4 FY 2016 - 2019 TIP PROJECT LISTING

PID:	Agency:	Project Description:	Phase:	Funding:	2015	2016	2017	2018	2019	5 Year TIP	
15	CITY	Evers Blvd., Bishop to Vandehei									
		Planning	F	MPO	\$80,000					\$80,000	
		Design	L	SALES TAX				\$500,000		\$500,000	
		Design	L	WATER		\$100,000	\$512,500			\$612,500	
		Construction	L	SALES TAX					\$3,500,000	\$3,500,000	
		Construction	L	SEWER		\$248,000	\$1,240,000			\$1,488,000	
		Total Federal Funds:				\$80,000	\$0	\$0	\$0	\$0	\$80,000
Total:				\$80,000	\$348,000	\$1,752,500	\$500,000	\$3,500,000	\$6,180,500		
13	CITY	Campstool & Dry Creek Culverts									
		Construction	L	SALES TAX		\$110,000				\$110,000	
		Total Federal Funds:					\$0			\$0	
		Total:					\$110,000			\$110,000	
12	CITY	Traffic Signal Fiber Optics									
		Phase 1	L	SALES TAX		\$100,000				\$100,000	
		Phase 1	S	CMP		\$20,000				\$20,000	
		Phase 2	L	SALES TAX			\$50,000			\$50,000	
		Total Federal Funds:					\$0	\$0	\$0	\$0	\$0
		Total:					\$120,000	\$50,000	\$0	\$0	\$170,000
11	CITY	Fox Farm & Stanfield Drainage Improvements									
		Construction	L	SALES TAX		\$100,000				\$100,000	
		Total Federal Funds:					\$0			\$0	
		Total:					\$100,000			\$100,000	
22	CITY	19th Street Rehabilitation: Phase 1, Warren to Morrie; Phase 2, Crow Creek to Warren									
		Design	L	SALES TAX	\$280,271					\$280,271	
		Design	L	BOPU	\$95,266					\$95,266	
		Construction Ph. 1	L	SALES TAX		\$2,327,618				\$2,327,618	
		Construction Ph. 1	L	BOPU		\$986,773				\$986,773	
		Construction Ph. 2	L	SALES TAX			\$3,200,000			\$3,200,000	
		Construction Ph. 2	L	BOPU			\$1,000,000			\$1,000,000	
		Total Federal Funds:				\$0	\$0	\$0		\$0	
		Total:				\$375,537	\$3,314,391	\$4,200,000		\$7,889,928	
10	CITY	24th St. Signal Replacements (Pioneer, Carey, Evans)									
		Design	L	SALES TAX		\$20,000				\$20,000	
		Construction	L	SALES TAX		\$450,000				\$450,000	
		Total Federal Funds:					\$0			\$0	
		Total:					\$470,000			\$470,000	

TABLE 4 FY 2016 - 2019 TIP PROJECT LISTING

PID:	Agency:	Project Description:	Phase:	Funding:	2015	2016	2017	2018	2019	5 Year TIP
	CITY	Signal Replacements (tbd)								
		Design	L	SALES TAX				\$15,000		\$15,000
		Construction	L	SALES TAX				\$400,000		\$400,000
		Total Federal Funds:						\$0		\$0
		Total:						\$415,000		\$415,000
9	CITY	Widen Converse between Dell Range and Ogden								
		Design	L	SALES TAX					\$200,000	\$200,000
		Total Federal Funds:							\$0	\$0
		Total:							\$200,000	\$200,000
8	CITY	Lake Minnehaha Phase 2/Holliday Basin Phase 1								
		Design	S	SLIB	\$200,000					\$200,000
		Construction	S	SLIB		\$2,300,000				\$2,300,000
		Total Federal Funds:			\$0	\$0				\$0
		Total:			\$200,000	\$2,300,000				\$2,500,000
	CITY	STREET AND PAVEMENT WORK								
		Construction	L	SALES TAX	\$4,350,000	\$4,550,000	\$4,550,000	\$4,550,000	\$4,550,000	\$22,550,000
		Construction	L	CITY RES	\$1,500,000					\$1,500,000
		Total Federal Funds:			\$0	\$0	\$0	\$0	\$0	\$0
		Total:			\$5,850,000	\$4,550,000	\$4,550,000	\$4,550,000	\$4,550,000	\$24,050,000
	CITY	1% CONSTRUCTION MANAGEMENT AND ADMINISTRATION								
		Construction	L	SALES TAX	\$475,000	\$550,000	\$550,000	\$550,000	\$550,000	\$2,675,000
		Total Federal Funds:								\$0
		Total:			\$475,000	\$550,000	\$550,000	\$550,000	\$550,000	\$2,675,000
	CITY	STORMWATER DRAINAGE MAINTENANCE AND REPAIR PROJECTS								
		Construction	L	SALES TAX	\$500,000	\$550,000	\$550,000	\$550,000	\$550,000	\$2,700,000
		Total Federal Funds:								\$0
		Total:			\$500,000	\$550,000	\$550,000	\$550,000	\$550,000	\$2,700,000

TABLE 4 FY 2016 - 2019 TIP PROJECT LISTING

PID:	Agency:	Project Description:	Phase:	Funding:	2015	2016	2017	2018	2019	5 Year TIP
25	CITY	LOGAN - NATIONWAY TO PERSHING (19TH - HUGUR TO LOGAN INCLUDED)								
		Design	L	SALES TAX		\$240,000				\$240,000
		Construction	L	SALES TAX		\$2,900,000				\$2,900,000
		Design	L	WATER	\$72,623					\$72,623
		Design	L	SEWER	\$25,516					\$25,516
		Construction	L	WATER		\$1,540,000				\$1,540,000
		Construction	L	SEWER		\$542,500				\$542,500
		Total Federal Funds:								\$0
		Total:				\$98,139	\$5,222,500			\$5,320,639
CITY TOTALS					2015	2016	2017	2018	2019	5 Year TIP
Total Federal Funds:					\$355,000	\$10,531,925	\$0	\$0	\$0	\$10,886,925
Total State Funds:					\$200,000	\$5,320,000	\$0	\$0	\$0	\$5,520,000
Total Local Funds:					\$7,353,676	\$16,316,991	\$12,322,500	\$6,565,000	\$9,350,000	\$51,908,167
Total:					\$7,908,676	\$32,168,916	\$12,322,500	\$6,565,000	\$9,350,000	\$68,315,092

TABLE 4 FY 2015 - 2019 TIP PROJECT LISTING

Agency:	Project Description:	Phase:	Funding Source:	2015	2016	2017	2018	2019	5 Year TIP
TRANSIT	TRANSIT BUSES								
		Other	F FTA 5307	\$324,000	\$325,600	\$341,880	\$358,974	\$376,923	\$1,727,377
		Other	L MATCHTRAN	\$81,000	\$81,400	\$85,470	\$89,744	\$94,231	\$431,844
		Total Federal Funds:		\$324,000	\$325,600	\$341,880	\$358,974	\$376,923	\$1,727,377
		Total:		\$405,000	\$407,000	\$427,350	\$448,718	\$471,153	\$2,159,221
TRANSIT	UPGRADE/BUILD BUS STOPS								
		Other	F FTA 5307		\$176,000				\$176,000
		Other	L MATCHTRAN		\$44,000				\$44,000
		Total Federal Funds:			\$176,000				\$176,000
		Total:			\$220,000				\$220,000
TRANSIT	SURVEILLANCE UPGRADE								
		Other	F FTA 5307		\$56,000				\$56,000
		Other	L MATCHTRAN		\$14,000				\$14,000
		Total Federal Funds:			\$56,000				\$56,000
		Total:			\$70,000				\$70,000
TRANSIT	FAREBOXES								
		Other	F FTA 5307		\$237,600				\$237,600
		Other	L MATCHTRAN		\$59,400				\$59,400
		Total Federal Funds:			\$237,600				\$237,600
		Total:			\$297,000				\$297,000
TRANSIT	ELECTRONIC PRE-TRIP EQUIPMENT								
		Other	F FTA 5307			\$8,000			\$8,000
		Other	L MATCHTRAN			\$2,000			\$2,000
		Total Federal Funds:				\$8,000			\$8,000
		Total:				\$10,000			\$10,000

TABLE 4 FY 2015 - 2019 TIP PROJECT LISTING

Agency:	Project Description:	Phase:	Funding Source:	2015	2016	2017	2018	2019	5 Year TIP	
TRANSIT	TRAINING CENTER									
		Other	F	FTA 5307			\$200,000			\$200,000
		Other	L	MATCHTRAN			\$50,000			\$50,000
	Total Federal Funds:					\$200,000			\$200,000	
	Total:					\$250,000			\$250,000	
TRANSIT	GENERAL OPERATING ASSISTANCE & CAPITAL									
		Other	F	FTA 5307	\$945,376	\$964,284	\$983,569	\$1,003,241	\$1,023,305	\$4,919,775
		Other	S	Section IIIB	\$6,350	\$6,350	\$6,350	\$6,350	\$6,350	\$31,750
		Other	S	Section 5311	\$110,000	\$110,000	\$110,000	\$110,000	\$110,000	\$550,000
		Other	L	MATCHTRAN	\$758,661	\$773,834	\$789,311	\$805,097	\$821,199	\$3,948,102
	Total Federal Funds:			\$945,376	\$964,284	\$983,569	\$1,003,241	\$1,023,305	\$4,919,775	
	Total:			\$1,820,387	\$1,854,468	\$1,889,230	\$1,924,688	\$1,960,854	\$9,449,627	
TRANSIT TOTALS				2015	2016	2017	2018	2019	5 Year TIP	
	Total Federal Funds:			\$1,269,376	\$1,759,484	\$1,533,449	\$1,362,215	\$1,400,228	\$7,324,751	
	Total State Funds:			\$116,350	\$116,350	\$116,350	\$116,350	\$116,350	\$581,750	
	Total Local Funds:			\$839,661	\$855,234	\$874,781	\$894,841	\$915,430	\$4,379,946	
	Total:			\$2,225,387	\$2,731,068	\$2,524,580	\$2,373,405	\$2,432,008	\$12,286,448	

TABLE 4 FY 2016 - 2019 TIP PROJECT LISTING

PID:	Agency:	Project Description:	Phase:	Funding Source:	2015	2016	2017	2018	2019	5 Year TIP
33	WYDOT	<b>WYDOT ENHANCEMENTS:</b> New Enhancements on West Lincolnway between Westland Rd to Little America, finish northside and new on southside Phase I								
		Construction	F	TAP	\$360,000					\$360,000
		Construction	L	SALES TAX	\$40,000					\$40,000
		<b>Total Federal Funds:</b>			<b>\$360,000</b>					<b>\$360,000</b>
		<b>Total:</b>			<b>\$400,000</b>					<b>\$400,000</b>
	WYDOT	<b>Expoxy Striping in the City of Cheyenne Varions Locations</b>								
		Construction	S	ARSCT	\$88,248					\$88,248
		<b>Total Federal Funds:</b>			<b>\$88,248</b>					<b>\$88,248</b>
		<b>Total:</b>			<b>\$88,248</b>					<b>\$88,248</b>
32	WYDOT	<b>LINCOLNWAY Overlay and upgrade ADA between Capitol and Warren</b>								
		Construction	F	NHPP	\$371,440					\$371,440
		<b>Total Federal Funds:</b>			<b>\$371,440</b>					<b>\$371,440</b>
		<b>Total:</b>			<b>\$371,440</b>					<b>\$371,440</b>
36	WYDOT	<b>I-80 Mill and Overlay MP 348-357</b>								
		Construction	S	SCP	\$10,700,000					\$10,700,000
		<b>Total Federal Funds:</b>			<b>\$0</b>					<b>\$0</b>
		<b>Total:</b>			<b>\$10,700,000</b>					<b>\$10,700,000</b>
31	WYDOT	<b>Bridge Rehab UPRR Structure and I-25/I-80 Interchange</b>								
		Construction	S	SCP	\$1,900,000					\$1,900,000
		<b>Total Federal Funds:</b>			<b>\$0</b>					<b>\$0</b>
		<b>Total:</b>			<b>\$1,900,000</b>					<b>\$1,900,000</b>
34	WYDOT	<b>RAILROAD CROSSING UPGRADES: 18TH STREET</b>								
		Construction	F	RHC	\$72,392					\$72,392
		Construction	L	SALES TAX	\$7,608					\$7,608
		<b>Total Federal Funds:</b>			<b>\$72,392</b>					<b>\$72,392</b>
		<b>Total:</b>			<b>\$80,000</b>					<b>\$80,000</b>

TABLE 4 FY 2016 - 2019 TIP PROJECT LISTING

PID:	Agency:	Project Description:	Phase:	Funding Source:	2015	2016	2017	2018	2019	5 Year TIP
30	WYDOT	RAILROAD CROSSING UPGRADES: 17TH STREET								
			Construction	F RHC	\$72,392					\$72,392
			Construction	L SALES TAX	\$7,608					\$7,608
		Total Federal Funds:			\$72,392					\$72,392
		Total:			\$80,000					\$80,000
28	WYDOT	RAILROAD CROSSING UPGRADES: 24TH STREET								
			Construction	F RHC	\$90,490					\$90,490
			Construction	L SALES TAX	\$9,510					\$9,510
		Total Federal Funds:			\$90,490					\$90,490
		Total:			\$100,000					\$100,000
29	WYDOT	I-25 North Overlay both lanes MP 16-25								
			Construction	F NHPP		\$7,293,852				\$7,293,852
			Construction	S S MATCH HIGH		\$766,543				\$766,543
		Total Federal Funds:				\$7,293,852				\$7,293,852
		Total:				\$8,060,395				\$8,060,395
27	WYDOT	RAILROAD CROSSING UPGRADES: 22ND STREET								
			Construction	F RHC		\$72,392				\$72,392
			Construction	L SALES TAX		\$7,608				\$7,608
		Total Federal Funds:								\$0
		Total:				\$80,000				\$80,000
26	WYDOT	RAILROAD CROSSING UPGRADES: 21ST STREET								
			Construction	F RHC		\$72,392				\$72,392
			Construction	L SALES TAX		\$7,608				\$7,608
		Total Federal Funds:								\$0
		Total:				\$80,000				\$80,000
25	WYDOT	RAILROAD CROSSING UPGRADES: 20TH STREET								
			Construction	F RHC		\$72,392				\$72,392
			Construction	L SALES TAX		\$7,608				\$7,608
		Total Federal Funds:				\$72,392				\$72,392
		Total:				\$80,000				\$80,000

TABLE 4 FY 2016 - 2019 TIP PROJECT LISTING

PID:	Agency:	Project Description:	Phase:	Funding Source:	2015	2016	2017	2018	2019	5 Year TIP	
37	WYDOT	I-80 Central Ave to Archer Interchange Overlay (Eastbound lane 2018) (Westbound Lane 2019) MP 362-372									
			Construction	F	NHPP				\$6,252,040	\$6,585,955	\$12,837,995
			Construction	S	S MATCH HIGH				\$657,054	\$692,147	\$1,349,201
		Total Federal Funds:							\$6,252,040	\$6,585,955	\$12,837,995
		Total:							\$6,909,094	\$7,278,102	\$14,187,196

WYDOT TOTALS					2015	2016	2017	2018	2019	5 Year TIP
Total Federal Funds:					\$966,714	\$7,511,028	\$0	\$6,252,040	\$6,585,955	\$21,315,737
Total State Funds:					\$12,688,248	\$766,543	\$0	\$657,054	\$692,147	\$14,803,992
Total Local Funds:					\$64,726	\$22,824	\$0	\$0	\$0	\$87,550
Total:					\$13,719,688	\$8,300,395	\$0	\$6,909,094	\$7,278,102	\$36,207,279



## Appendix C - Self-Certification


In accordance with 23 CFR 450.334, the Wyoming Department Of Transportation, and the Cheyenne Metropolitan Planning Organization for the Cheyenne urbanized area hereby certify that the transportation planning process is addressing the major issues in the metropolitan planning area and is being conducted in accordance with all applicable requirements of:

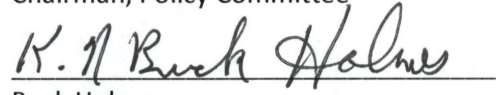
- (1) 23 U.S.C. 134, 49 U.S.C. Section 5303, and 23 CFR Part 450;
- (2) Sections 174 and 176(c) and (d) of the Clean Air Act as amended (42 U.S.C. 7504, 7506(c) and (d) and 40 CFR 93);
- (3) Title VI of the Civil Rights Act of 1964, as amended (42 U.S.C. 2000d-1) and 49 CFR part 21;
- (4) 49 U.S.C. 5332, prohibiting discrimination on the basis of race, color, creed, national origin, sex or age in employment or business opportunity;
- (5) Section 1101(b) of the Moving Ahead for Progress in the 21st Century Act (Pub. L. 112-141) and 49 CFR Part 26 regarding the involvement of Disadvantaged Business Enterprises in USDOT funded planning projects;
- (6) 23 CFR part 230, regarding the implementation of an equal employment opportunity program on Federal and Federal-aid highway construction contracts;
- (7) The provisions of the Americans with Disabilities Act of 1990 (42 U.S.C. 12101 et seq.) and 49 CFR parts 27, 37, and 38;
- (8) Older Americans Act, as amended (42 U.S.C. 6101), prohibiting discrimination on the basis of age in programs or activities receiving Federal financial assistance;
- (9) Section 324 of CFR 23, regarding prohibition of discrimination based on gender; and
- (10) Section 504 of the Rehabilitation Act of 1973 and 49 CFR part 27 regarding discrimination against individuals with disabilities.

The Policy Committee of the Metropolitan Planning Organization, has reviewed and approved on the 25th day of June 2015, this Transportation Improvement Program for Fiscal Years '16-'19.

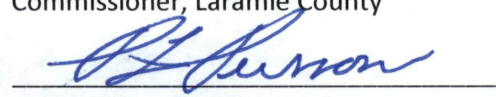
### Metropolitan Planning Organization

AUTHORITY:

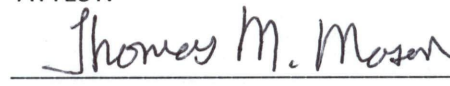
  
Richard L. Kaysen  
Mayor, City of Cheyenne  
Chairman, Policy Committee

  
Buck Holmes

Commissioner, Laramie County

  
Pat Persson, District Engineer,  
Wyoming Department of Transportation

ATTEST:

  
Thomas M. Mason  
MPO Director

  
Date