

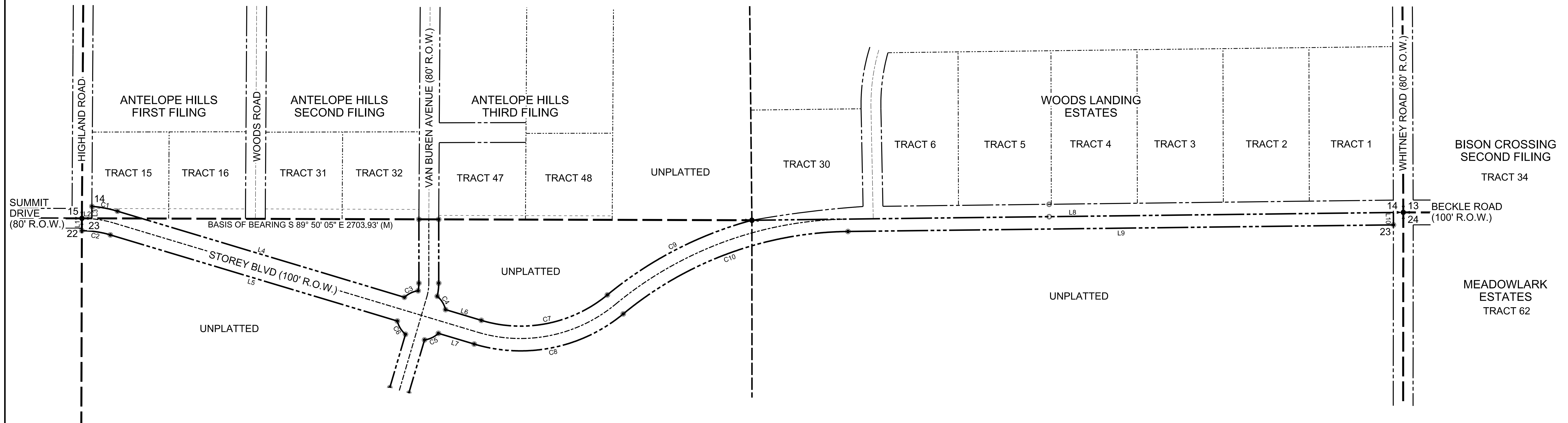
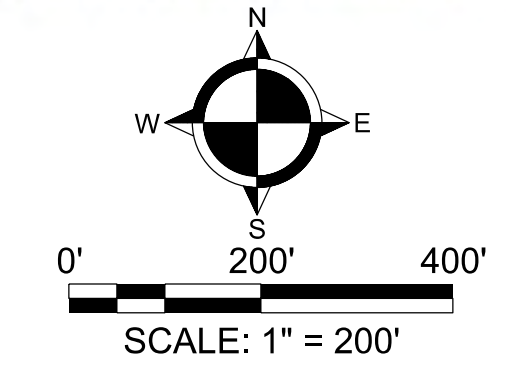
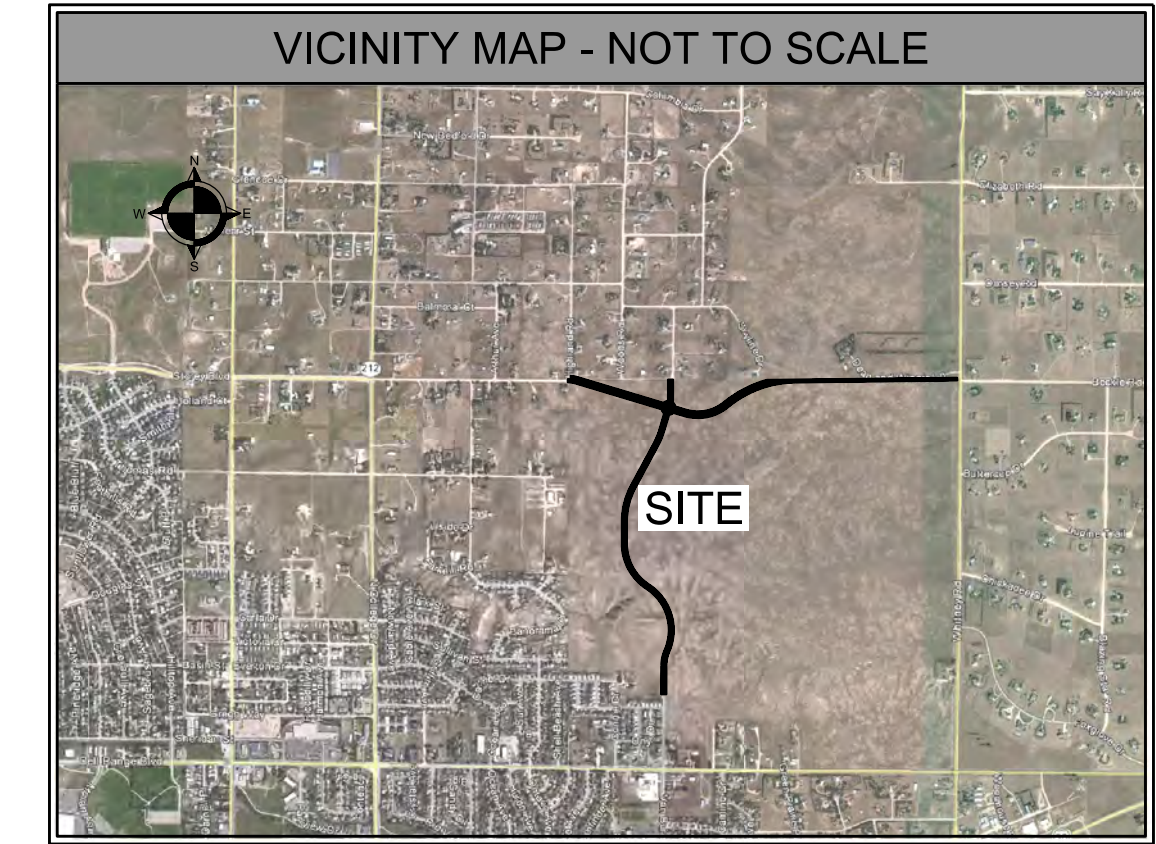
LEGEND OF SYMBOLS & ABBREVIATIONS

- SECTION
- QUARTER SECTION
- SIXTEENTH SECTION
- EXISTING RIGHT OF WAY
- PROPOSED RIGHT OF WAY
- EXISTING PROPERTY S
- EXISTING EASEMENT
- PROPOSED CENTER
- SECTION TIES
- (R) RECORD DISTANCE
- (M) MEASURED DISTANCE
- SET 3/4" X 24" REBAR WITH 2" ALUMINUM CAP STAMPED "PELS 9283"
- FOUND SECTION CORNERS
- FOUND QUARTER SECTION CORNERS
- FOUND MONUMENTS AS NOTED
- CONTROL POINT
- FOUND R.O.W. MONUMENTS
- CALCULATED POINT

BASIS OF BEARING

THE SECTION LINE BEARING S 89° 50' 05" E, A DISTANCE 2703.93' MONUMENTED AS SHOWN HEREON, BETWEEN THE NORTH WEST CORNER OF SECTION 23 AND THE NORTH 1/4 CORNER OF SECTION 23.

VICINITY MAP - NOT TO SCALE



LINE-CURVE TABLE

Element	Radius (ft)	Delta	Length (ft)	Direction	Distance (ft)
L1				N 0° 9' 55" E	50.02
L2				S 89° 50' 5" E	40.00
L3				N 0° 21' 7" E	48.46
C1	500.00 R	12° 3' 10"	105.18	S 79° 18' 47" E	104.99
C2	400.00 R	16° 41' 13"	116.50	S 81° 37' 49" E	116.09
L4				S 73° 17' 12" E	1209.29
L5				S 73° 17' 12" E	1209.29
C3	100.00 L	35° 40' 49"	62.27	S 64° 33' 12" W	61.27
C4	100.00 L	37° 2' 26"	64.65	N 31° 48' 25" W	63.53
C5	100.00 L	36° 6' 19"	63.02	N 64° 45' 57" E	61.98
C6	100.00 L	36° 44' 18"	64.12	S 31° 39' 21" E	63.03
L6				S 73° 17' 12" E	150.85
L7				S 73° 17' 12" E	150.85
C7	550.00 L	56° 16' 32"	540.21	N 78° 34' 31" E	518.75
C8	650.00 L	56° 19' 48"	639.04	N 78° 32' 54" E	613.62
C9	1550.00 R	24° 27' 40"	661.74	N 62° 40' 5" E	656.72
C10	1450.00 R	38° 55' 24"	985.05	N 69° 50' 42" E	966.21
L8				N 89° 18' 24" E	2588.99
L9				N 89° 18' 24" E	2201.67
L10				N 0° 35' 8" W	50.00

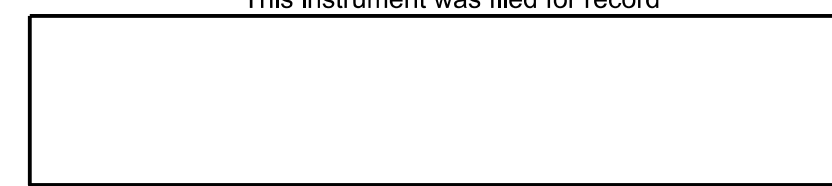
APPROVAL

ADOPTED BY THE GOVERNING BODY OF THE CITY OF CHEYENNE, WYOMING.
BY ORDINANCE NO. _____ ON THE ____ DAY OF _____, 2016.

MAYOR _____ ATTEST: _____
CITY CLERK

Filing Record
The State of Wyoming
County of Laramie

This instrument was filed for record



by _____ Deputy

COPYRIGHT 2016

BY WESTERN RESEARCH & DEVELOPMENT
THIS PRODUCT STYLE AND FORMAT IS PROTECTED BY COPYRIGHT AND ALL RIGHTS ARE RESERVED.
THE USE OF THIS STYLE AND FORMAT IS STRICTLY PROHIBITED WITHOUT THE WRITTEN CONSENT AND
PERMISSION OF WESTERN RESEARCH & DEVELOPMENT

OFFICIAL MAP

for
STOREY BOULEVARD AND
VAN BUREN AVENUE

SITUATE IN SECTION 23,
TOWNSHIP 14 NORTH, RANGE 66 WEST OF THE 6TH P.M., LARAMIE
COUNTY, WYOMING

CERTIFICATE OF SURVEYOR

State of Wyoming } ss
County of Laramie

I, Gary N. Grigsby, a Professional Engineer and Land Surveyor registered in the State of Wyoming do hereby certify that this Official Map was prepared from the records and field notes of a survey conducted under my supervision during the month of October, 2016, and that all dimensions and other details are correct to the best of my knowledge and belief.

Gary N. Grigsby, Wyoming PE & PLS # 9283
October, 2016 (Job 130-1709-00)
For and on behalf of Western Research & Development, Ltd.

CITY OF CHEYENNE
LARAMIE COUNTY,
WYOMING

OFFICIAL MAP
STOREY BOULEVARD

DATE: OCTOBER 2016
SCALE: 1" = 200'
DRAWN/CHECKED BY: RDC/TDS
DRAWING PATH

SHEET NUMBER
1 of 2

Western
RESEARCH & DEVELOPMENT, LTD.
5908 YELLOWSTONE ROAD, SUITE B CHEYENNE, WY. 82009 (307) 632-5656

CLIENT INFORMATION
PROJECT NUMBER:
110-1519-00

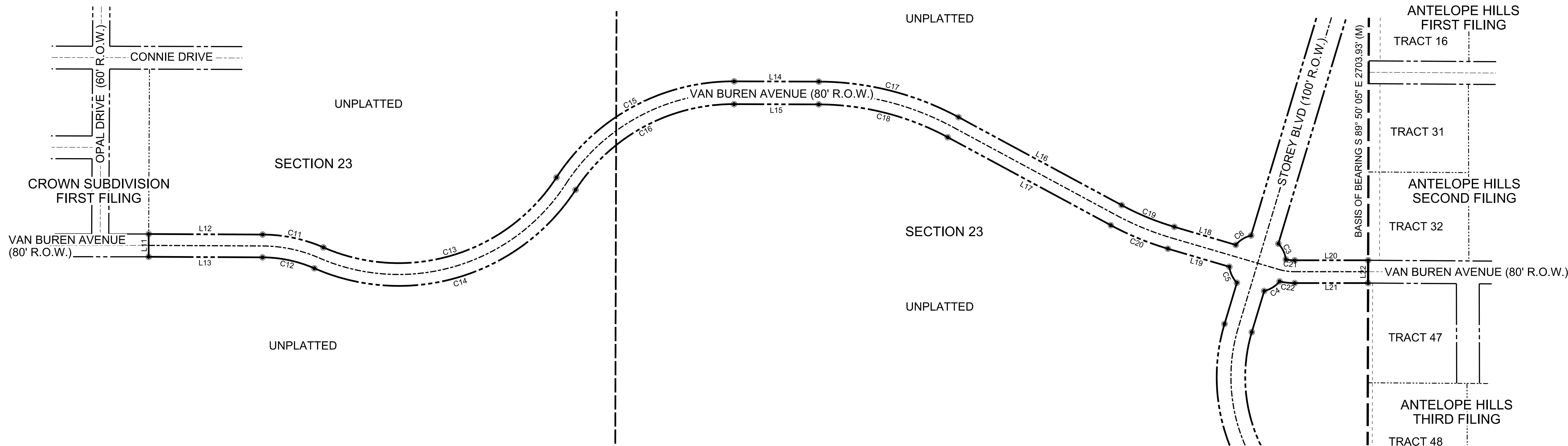
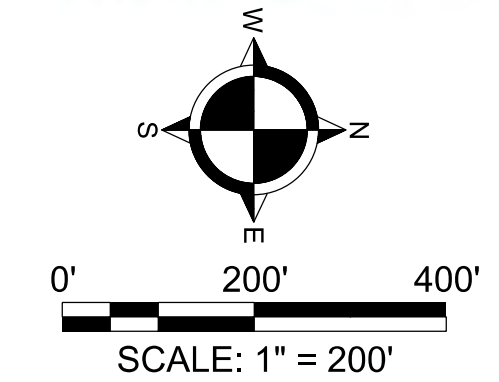
LEGEND OF SYMBOLS & ABBREVIATIONS

- SECTION
- QUARTER SECTION
- SIXTEENTH SECTION
- EXISTING RIGHT OF WAY
- PROPOSED RIGHT OF WAY
- EXISTING PROPERTY S
- EXISTING EASEMENT
- PROPOSED CENTER
- SECTION TIES
- (R) RECORD DISTANCE
- (M) MEASURED DISTANCE
- SET 3/4" X 24" REBAR WITH 2" ALUMINUM CAP STAMPED "PELS 9283"
- FOUND SECTION CORNERS
- FOUND QUARTER SECTION CORNERS
- FOUND MONUMENTS AS NOTED
- CONTROL POINT
- FOUND R.O.W. MONUMENTS
- CALCULATED POINT

BASIS OF BEARING

THE SECTION LINE BEARING S 89° 50' 05" E, A DISTANCE 2703.93' MONUMENTED AS SHOWN HEREON, BETWEEN THE NORTH WEST CORNER OF SECTION 23 AND THE NORTH 1/4 CORNER OF SECTION 23.

VICINITY MAP - NOT TO SCALE



LINE-CURVE TABLE

Element	Radius (ft)	Delta	Length (ft)	Direction	Distance (ft)
L11				S 89° 54' 56" E	80.00
L12				N 0° 15' 50" E	399.70
L13				N 0° 15' 50" E	399.45
C11	540.00 R	23° 19' 7"	219.77	N 11° 55' 24" E	218.26
C12	460.00 R	23° 19' 7"	187.21	N 11° 55' 24" E	185.92
C13	660.00 L	80° 36' 45"	928.59	N 16° 43' 25" W	853.87
C14	740.00 L	80° 36' 45"	1041.14	N 16° 43' 25" W	957.37
C15	740.00 R	57° 13' 20"	739.05	N 28° 25' 7" W	708.72
C16	660.00 R	57° 13' 20"	659.15	N 28° 25' 7" W	632.10
L14				N 0° 11' 33" E	296.98
L15				N 0° 11' 33" E	296.98
C17	1040.00 R	28° 9' 52"	511.23	N 14° 16' 29" E	506.10
C18	960.00 R	28° 9' 52"	471.90	N 14° 16' 29" E	467.17
L16				N 28° 21' 25" E	650.32
L17				N 28° 21' 25" E	650.32
C19	960.00 L	11° 57' 37"	200.40	N 22° 22' 37" E	200.03
C20	1040.00 L	11° 57' 37"	217.10	N 22° 22' 37" E	216.70
L18				N 16° 23' 48" E	224.78
L19				N 16° 23' 48" E	224.78
C3	100.00 L	35° 40' 49"	62.27	S 64° 33' 12" W	61.27
C4	100.00 L	37° 2' 26"	64.65	N 31° 48' 25" W	63.53
C5	100.00 L	36° 6' 19"	63.02	N 64° 45' 57" E	61.98
C6	100.00 L	36° 44' 18"	64.12	S 31° 39' 21" E	63.03
C21	160.00 L	11° 6' 59"	31.04	N 5° 33' 30" E	30.99
C22	240.00 L	12° 45' 27"	53.44	N 6° 22' 44" E	53.33
L20				N 0° 0' 0" W	257.79
L21				N 0° 0' 0" W	257.56
L22				S 89° 50' 5" E	80.00

APPROVAL

ADOPTED BY THE GOVERNING BODY OF THE CITY OF CHEYENNE, WYOMING.
BY ORDINANCE NO. _____ ON THE _____ DAY OF _____, 2016.

MAYOR _____ ATTEST: _____
CITY CLERK

Filing Record
The State of Wyoming ss
County of Laramie }
This instrument was filed for record

County Clerk & Ex-Officio Registrar of Deeds
by _____ Deputy

COPYRIGHT 2016

BY WESTERN RESEARCH & DEVELOPMENT
THIS PRODUCT STYLE AND FORMAT IS PROTECTED BY COPYRIGHT AND ALL RIGHTS ARE RESERVED.
THE USE OF THIS STYLE AND FORMAT IS STRICTLY PROHIBITED WITHOUT THE WRITTEN CONSENT AND
PERMISSION OF WESTERN RESEARCH & DEVELOPMENT

OFFICIAL MAP

for
**STOREY BOULEVARD AND
VAN BUREN AVENUE**

SITUATE IN SECTION 23,
TOWNSHIP 14 NORTH, RANGE 66 WEST OF THE 6TH P.M., LARAMIE
COUNTY, WYOMING

CERTIFICATE OF SURVEYOR

State of Wyoming } ss
County of Laramie }

I, Gary N. Grigsby, a Professional Engineer and Land Surveyor registered in the State of Wyoming do hereby certify that this Official Map was prepared from the records and field notes of a survey conducted under my supervision during the month of October, 2016, and that all dimensions and other details are correct to the best of my knowledge and belief.

Gary N. Grigsby, Wyoming PE & PLS # 9283
October, 2016 (Job 130-1709-00)
For and on behalf of Western Research & Development, Ltd.

Western
RESEARCH & DEVELOPMENT, LTD.
5908 YELLOWSTONE ROAD, SUITE B CHEYENNE, WY. 82009 (307) 632-5565

CLIENT INFORMATION
CITY OF CHEYENNE
LARAMIE COUNTY,
WYOMING

DRAWING TITLE
OFFICIAL MAP
VAN BUREN AVENUE

DATE: OCTOBER 2016
SCALE: 1" = 200'
DRAWN/CHECKED BY: RGC/TDS
DRAWING PATH
PROJECT NUMBER: 110-1519-00

SHEET NUMBER
2 of 2