



TRANSPORTATION IMPROVEMENT PROGRAM

Annual and Four Year
Element for Fiscal Years
2014 - 2017

Prepared by:
The Cheyenne Metropolitan Planning Organization

In cooperation with:
The Wyoming Department of Transportation
The U. S. Department of Transportation
The Federal Highway Administration
The Federal Transit Administration

Adopted by the Policy Committee on June 25, 2013

Table of Contents

I.	Introduction.....	2
	Background.....	2
	MAP-21.....	2
II.	The Transportation Improvement Program.....	4
	Introduction.....	4
	TIP Contents.....	4
	Project Selection.....	5
	Approval.....	6
III.	Recommended Projects and Programs.....	7
	Table 1 – FY `13 Projects Beginning During the Spring and Summer of 2013.....	8
	Table 2 – FY `14 Highest Priority Federally Funded Projects for.....	9
	the Cheyenne Urbanized Area	
	Table 3 – FY `15 Highest Priority State and Local Funded Projects for the.....
	Cheyenne Urban Area	
	Table 4 – FY `14 - `17 Project Listing.....	1
	City of Cheyenne	
	Cheyenne Transit Program	
	Laramie County	
	Cheyenne Airport Board	
	Wyoming Department of Transportation	
	Board of Public Utilities	
	Table 5 – Estimate of Available Funds for FY `14- `17 Transportation Projects.....	1
VI.	Pavement Management System.....	1
	Table 6 - Calendar Year 2013 City Pavement Programs.....	1
	Appendix A: Funding	
	Definitions.....	1
	Appendix B:	
	Maps.....	1
	Appendix C: Certification Statement.....	1

1 - Introduction

Background

The Cheyenne Metropolitan Planning Organization (MPO) was established on April 27, 1965 and is responsible for ensuring that federal funds for transportation projects in the urban area are spent in compliance with local government development guidelines and federal regulations.

The Cheyenne MPO was designated for transportation planning purposes by the governor of Wyoming in 1981. The MPO is responsible for developing transportation policies and coordinating the various federal, state, and local agencies involved in long-range transportation planning and project development. The geographic area the MPO is involved with is defined by the Metropolitan Planning Boundary which is the Cheyenne areas twenty-five year socioeconomic growth area.

A comprehensive, cooperative and continuing (3C) planning process is necessary for the Cheyenne MPO to plan for Cheyenne's future transportation needs. A major part of this process involves citizens' input and a three-committee format that produces an ongoing attempt to satisfy present and future travel demands, as well as to provide transportation needs for a growing population and economic base.

The policies for the Cheyenne MPO are established through the *Citizens' Transportation Advisory Committee*, *Technical Committee*, and *Policy Committee*. These committees also help decide how the Federal Planning Funds (PL), 5303 Transit Planning Funds, and Federal Surface Transportation-Urban Program (STP-U) Funds for construction will be spent within the urban area. The committees, as required, develop this Transportation Improvement Program (TIP) to facilitate the "3C" planning process.

Moving Ahead for Progress in the 21st Century Act (MAP-21)

On July 6, 2012, President Obama signed into law P.L. 112-141, the Moving Ahead for Progress in the 21st Century Act (MAP-21). Funding surface transportation programs at over \$105 billion for fiscal years (FY) 2013 and 2014, MAP-21 is the first long-term highway authorization enacted since 2005. MAP-21 represents a milestone for the U.S. economy – it provides needed funds and, more importantly, it transforms the policy and programmatic framework for investments to guide the growth and development of the country's vital transportation infrastructure.

MAP-21 creates a streamlined, performance-based, and multimodal program to address the many challenges facing the U.S. transportation system. These challenges include improving

safety, maintaining infrastructure condition, reducing traffic congestion, improving efficiency of the system and freight movement, protecting the environment, and reducing delays in project delivery.

MAP-21 builds on and refines many of the highway, transit, bike, and pedestrian programs and policies established in 1991 through the Intermodal Surface Transportation Efficiency Act (ISTEA), and continued through subsequent legislation including TEA-21 in 1998 and SAFETEA-LU in 2005).

Major objectives of the MAP-21 legislation include:

- ***Strengthening America's highways*** by establishing a performance basis to preserve and improve the National Highway Performance Program.
- ***Establishing a performance-based program*** to make more efficient use of Federal transportation funds and increase accountability of Federal highway programs. Performance goals are related to safety, infrastructure condition, congestion reduction, system reliability, freight movement and economic vitality, environmental sustainability, and reduced project delivery delays.
- ***Creating jobs and supporting economic growth*** through innovative financing, encouraging private sector investment, and investing in infrastructure improvements.
- ***Supporting the Department of Transportation's aggressive safety agenda*** by doubling funding for infrastructure safety, working to reduce highway fatalities and distracted driving, and improving transit and motor carrier safety.
- ***Streamlining Federal highway transportation programs*** by creating a smaller number of broader core programs and eliminating most current discretionary programs.
- ***Accelerating project delivery and promoting innovation*** in the planning, design, engineering, construction and financing of transportation projects. These MAP-21 changes are based on FHWA's "Every Day Counts" initiative, and are intended to speed up the project delivery process, save time and money for individuals and businesses, and yield broad nationwide benefits.

2 - The Transportation Improvement Program

Introduction

A Transportation Improvement Program (TIP) is a staged, multi-year program of capital transportation improvements including all modes of transportation. The TIP must be updated at least every four years and cover a period of four years. The TIP must include a priority list of projects and at a minimum, group the projects by priority for each year.

The Metropolitan Planning Organization and the State Transportation Department must cooperate in the selection of each project and in the development of the TIP. The frequency and cycle for updating the TIP must be compatible with the State Transportation Improvement Program (STIP) development and approval process. Once approved by the Policy Committee, and upon the approval of the Governor or the Governor's designee, the TIP becomes part of the STIP. Although metropolitan TIPs do not need to be approved by the Federal Highway Administration (FHWA) or the Federal Transit Administration (FTA), copies of any new or amended TIPs must be provided to each agency.

In developing the program, the Metropolitan Planning Organization shall provide citizens, affected public agencies, representatives of transportation agency employees, other affected employee representatives, private providers of transportation, and other interested parties with a reasonable opportunity to comment on the proposed program.

The TIP must be financially constrained by year and include a financial plan that demonstrates which projects can be implemented using current revenue sources. The financial plan shall be developed by the MPO in cooperation with the State and the Transit operator. The State is required to provide the MPO with estimates of available Federal and State funds which may be utilized in developing the TIP financial plan.

TIP Contents

The TIP is a "living document" and can be amended with the approval of the Policy Committee. The TIP focuses on projects that will require four years or fewer to implement. Within the four year span, projects may be delayed or accelerated according to present needs. This flexibility enhances coordination among local and State agencies. Coordination among related projects saves money and decreases disruptions to the transportation system. The TIP is evaluated annually and an annual increment of improvements is added to maintain its full multi-year program.

The TIP does not constitute an appropriation of funds, nor replace the normal funding programs. The TIP is intended to serve as a fiscal management tool to assist State and local

agencies with matching needs to resources. All federal projects eligible for placement in the TIP should be consistent with the approved Long Range Master Transportation Plan. Cheyenne MPO's comprehensive plan, known as *PlanCheyenne*, was adopted and approved in November of 2006. Federally funded projects found in this TIP originated from PlanCheyenne. PlanCheyenne is currently being updated.

The TIP should contain the following basic elements:

1. All transportation projects, or identified phases of a project, including pedestrian walkways, bicycle transportation facilities, and transportation enhancement projects within the metropolitan planning area proposed for funding under Title 23, U.S.C., and the Federal Transit Act.
2. Projects that are consistent with the adopted and approved Master Transportation Plan.
3. All regionally significant transportation projects for which an FHWA or FTA approval is required, whether or not the projects are to be funded with title 23, U.S.C., or Federal Transit Act funds.

The projects listed in the TIP should also include: a sufficient description of the project; a cost estimate; the amount of federal funds proposed to be obligated during each program year; and identification of the agencies responsible for carrying out the project.

NOTE: Private developments occasionally have infrastructure and transportation improvements imposed upon them to mitigate their impacts to the public transportation system. The TIP does not include those projects.

Project Selection

The evaluation of candidate improvement projects, and the selection of those to be included in the FY '14-'17 TIP are based on the following considerations:

1 - Project Criterion: Projects listed in this four-year improvement program are chosen, ideally, using the MAP-21 guiding principles outlined in the Introduction. Through the established planning process a twenty-five year master transportation plan is adopted. This plan prioritizes proposed transportation projects whose completion is desired within a twenty-five year period with regard to financial constraints. In order for federally funded projects to be listed in a TIP they must first be established in the Master Transportation Plan, and for the most part given a high priority.

2 - Prioritization of Projects: Once validated as a viable transportation project through the Master Transportation Plan process, the proposed projects are prioritized to assess their relative importance and to determine the appropriate year for project initiation. Considerations are given to compatibility with adopted community goals and objectives and expressed level of need.

New projects listed in the TIP were selected and prioritized by the local agencies using project selection guidance provided in the *Innovative Finance Analysis, Transportation Improvement Programming Process, and 1997 Project List Update*. Local projects are further prioritized by the 5th and 6th Penny Optional Sales Tax public selection process. Projects which are already programmed were not prioritized along with those that are not currently programmed. (Recommended prioritizations of roadways are only a suggestion. Other factors such as funding availability, coordination with other agencies, and political needs may alter when projects actually commence).

3 - Economic Feasibility of Projects: This phase of the process consists of an evaluation of each project's cost relative to the community's total transportation needs and resources. The financial plan demonstrates what funding sources will be utilized, and whether there are enough funds allocated to secure all selected projects.

4 - Public Input: Cheyenne MPO assures that the citizens in the Cheyenne Area, affected public agencies, representatives of transportation agency employees, private providers of transportation, and other interested parties will have an opportunity to comment on the proposed TIP before adoption. The Cheyenne MPO Technical Committee approved the proposed TIP at their regular meeting held May 15, 2013. The Cheyenne MPO Citizens' Advisory Committee approved the proposed TIP at their regular meeting held May 16, 2013. The TIP was presented to the County Planning Commission on June 13 and to the City Planning Commission on June 17. An advertisement for the TIP availability and presentation to the City and County Planning Commission and approval at the Policy Committee was placed in the Wyoming Tribune Eagle on June 9 and 12. In addition, the Cheyenne Transit Program held their own Public Meeting on August 27, 2012 to discuss their FY '13-'14 FTA Grant application and three year program. At the Planning Commission meetings held on June 13 and 17, the Planning Commission members had general questions on a few topics, but no major issues were raised.

5 - Other Considerations: In terms of selecting a project for construction, the MAP-21 provides additional flexibility within the four year period on a TIP. Any project identified within the initial four year period may be accelerated or delayed based on current funds, needs, or priorities. If a newly identified federally funded project is to be considered for placement in the TIP, it must be presented to the transportation planning committees for their approval, placed into the Master Transportation Plan, and then added to the TIP. If approved, an amendment is then placed on the existing TIP to identify the newly advanced project.

Approval

After approval by the Cheyenne MPO Policy Committee, the Transportation Improvement Program is presented to the Wyoming Department of Transportation for inclusion in the State Transportation Improvement Program. The STIP is then sent to the Governor of the State for

approval.

3 - Recommended Projects and Programs

The following sections summarize the projects prioritized for advancement during the four to five year planning period of the TIP.

TABLE 1 summarizes projects which were listed in past TIPs. Construction is scheduled to begin on these projects during the spring and summer of 2013. They are provided here for information only.

TABLE 2 summarizes the **federally funded** transportation-related projects which have been offered by the different agencies for construction, reconstruction or other various types of activity in Fiscal Year '14.

TABLE 3 summarizes the transportation-related projects which have been offered by the different agencies for construction, reconstruction or other various types of activity in Fiscal Year '14, which **are not funded** by the Federal Government.

TABLE 4 summarizes by agency all the transportation-related projects in the Metropolitan Planning Area which are scheduled to be completed during the four year period. Spring and summer 2013 projects are included for information only.

TABLE 5 summarizes the projected funds which will be made available to the different agencies for transportation projects. This financial plan is provided to show that projected projects do not exceed projected revenues.

TABLES 6 lists the Pavement Management System (PMS) projects the City intends to conduct during 2013.

Appendix A explains the abbreviations used in the Funding Source column.

Appendix B includes maps showing project locations.

Appendix C is the MPO "Self-Certification" Statement.

Note: The Transportation Planning Process Committees have reviewed these projects and have concurred with the priorities assigned by the various agencies.

TABLE 1
FY 2013 PROJECTS WHICH HAVE STARTED BY JUNE 2013 (For Information Only)

FY 2013 FEDERALLY FUNDED PROJECTS CHEYENNE URBAN AREA

Agency:	Project Description:	Federal	State	Local	Total
CITY	East Cheyenne Greenway Extension Holiday Park Lincolnway Crossing	\$250,000		\$1,055,000	\$1,305,000
CITY	South Cheyenne Greenway Walterschied Underpass	\$280,000		\$600,000	\$880,000
CITY	East Pershing, Seymour to Carbon	\$2,486,000		\$1,070,001	\$3,556,001
TRANSIT	Transit Buses	\$49,505		\$68,000	\$117,505
TRANSIT	General Operating Assistance and Capital	\$1,128,628	\$133,663	\$20,000	\$1,282,291
AIRPORT BOARD	Design/Reconstruct Taxiway A from GA Ramp to Taxiway A1	\$4,381,250	\$138,355	\$92,237	\$4,611,842
WYDOT	WYDOT Enhancements West Lincolnway	\$190,000		\$10,000	\$200,000
WYDOT	West Pershing	\$4,214,000		\$10,730,000	\$14,944,000
WYDOT	I-180 Sidewalks and ADA Improvements	\$329,384	\$34,616		\$364,000
WYDOT	Central and Warren/Pershing to 8th ADA	\$1,573,235			\$1,573,235
WYDOT	Lincolnway Big Horn to College ADA	\$1,536,890			\$1,536,890
WYDOT	I-25/College Drive Diverging Diamond	\$3,126,613			\$3,126,613
Total Funds for 2013 Federally Funded Projects:		\$19,545,505	\$306,634	\$13,645,238	\$33,497,377

FY 2013 STATE & LOCALLY FUNDED PROJECTS CHEYENNE URBAN AREA

Agency:	Project Description:	State	Local	Total
CITY	East Pershing Roundabout		\$5,000,000	\$5,000,000
CITY	Street and Pavement Work		\$4,350,000	\$4,350,000
CITY	WyDot and Federal Project Matches		\$375,000	\$375,000
CITY	1% Construction Management and Administration		\$475,000	\$475,000
CITY	Stormwater Drainage Maintenance and Repair Projects		\$500,000	\$500,000
CITY	Extending Infrastructure for Economic Development		\$250,000	\$250,000
AIRPORT BOARD	Air Service Promotion	\$20,000	\$20,000	\$40,000
AIRPORT BOARD	Pavement/Navaid Maintenance	\$32,000	\$8,000	\$40,000
WYDOT	College Drive and Four Mile Road	\$2,000,000	\$8,000	\$2,008,000
BOPU SEWER	General Sewer		\$1,111,300	\$1,111,300
BOPU WATER	General Water		\$2,258,200	\$2,258,200
Total Funds for 2011 State & Locally Funded Projects:		\$2,052,000	\$14,355,500	\$16,407,500

Total Funds for 2013 Federally Funded Projects:		\$19,545,505	\$306,634	\$13,645,238	\$33,497,377
Total Funds for 2013 State & Locally Funded Projects:			\$2,052,000	\$14,355,500	\$16,407,500
Total Funds for 2013 Funded Projects:		\$19,545,505	\$2,358,634	\$28,000,738	\$49,904,877

TABLE 2
FISCAL YEAR 2014 FEDERALLY FUNDED PROJECTS CHEYENNE URBAN AREA

Agency:	Project Description:	Federal	State	Local	Total
CITY	Wayfinding Plan Implementation	\$400,000		\$100,000	\$500,000
CITY	Christensen Railroad Overpass	\$10,000,000		\$2,000,000	\$12,000,000
TRANSIT	General Operating Assistance & Capital	\$807,811	\$116,914	\$767,227	\$1,691,952
TRANSIT	Transit Buses	\$232,800		\$58,200	\$291,000
TRANSIT	Dispatch Software	\$56,000		\$14,000	\$70,000
COUNTY	SRTS Afflerbach	\$200,000			\$200,000
WYDOT	Bridge Rehab	\$1,350,000	\$150,000		\$1,500,000
WYDOT	I-80 Crack Seal	\$225,000	\$25,000		\$250,000
WYDOT	College Drive Chipseal	\$2,520,000	\$280,000		\$2,800,000
WYDOT	I-80 Slab Repair	\$900,000	\$100,000		\$1,000,000
Total Funds for 2014 Federally Funded Projects:		\$16,691,611	\$671,914	\$2,939,427	\$20,302,952

TABLE 3
FISCAL YEAR 2014 STATE & LOCALLY FUNDED PROJECTS CHEYENNE URBAN AREA

Agency:	Project Description:	State	Local	Total
CITY	West Cheyenne Greenway Extension		\$40,000	\$40,000
CITY	Polk Ave		\$180,000	\$180,000
CITY	Railroad Quiet Zone	\$100,000	\$100,000	\$200,000
CITY	Railroad Quiet Zone	\$24,000	\$24,000	\$48,000
CITY	Campstool Overlay	\$525,000	\$150,000	\$675,000
CITY	Street And Pavement Work		\$4,350,000	\$4,350,000
CITY	1% Construction Management And Administration		\$475,000	\$475,000
CITY	Stormwater Drainage Maintenance And Repair Projects		\$500,000	\$500,000
CITY	Extending Infrastructure for Economic Development		\$250,000	\$250,000
CITY	Snyder 24th to Pershing		\$4,400,000	\$4,400,000
CITY	Logan Nationway to Pershing		\$5,222,500	\$5,222,500
CITY	19th Snyder to Morrie		\$100,000	\$100,000
AIRPORT BOARD	Air Service Promotion	\$20,000	\$20,000	\$40,000
AIRPORT BOARD	Pavement/Navaid Maintenance	\$32,000	\$8,000	\$40,000
BOPU WATER	Water Projects		\$7,953,600	\$7,953,600
BOPU SEWER	Sewer Projects		\$2,849,700	\$2,849,700
Total Funds for 2014 State & Locally Funded Projects:		\$701,000	\$26,622,800	\$27,323,800

Total Funds for 2014 Federally Funded Projects:	\$16,691,611	\$671,914	\$2,939,427	\$20,302,952
Total Funds for 2014 State & Locally Funded Projects:		\$701,000	\$26,622,800	\$27,323,800
Total Funds for 2014 Funded Projects:	\$16,691,611	\$1,372,914	\$29,562,227	\$47,626,752

TABLE 4 FY 2014 - 2017 TIP PROJECT LISTING

PID:	Agency:	Project Description:	Phase:	Funding:	2013	2014	2015	2016	2017	5 Year TIP
14	CITY	West Cheyenne Greenway Extension								
		MLK Jr. Park to I-25 Design	L	CITY		\$40,000				\$40,000
		MLK Jr. Park to Westland Rd	L	CITY			\$225,000			\$225,000
		Total Federal Funds:								
		Total:				\$40,000	\$225,000			\$265,000
17	CITY	South Cheyenne Greenway								
		Cribbon: I-80 to Allison; Partoyan to Deming	L	CITY			\$225,000			\$225,000
		Total:					\$225,000			\$225,000
19	CITY	North Cheyenne Greenway - Powderhouse: Storey to Gardenia; Converse: Grandview to Mason Way								
		Construction	L	CITY			\$220,000			\$220,000
		Total:					\$220,000			\$220,000
1	CITY	POLK AVE: Paving Polk Avenue between Pershing and US 30 (East Lincolnway) and construction of Greenway and curb and gutter on the west side of the road.								
		Construction	S	WBC	\$250,000					\$250,000
		Construction	L	CITY	\$250,000					\$250,000
		Construction	L	COUNTY	\$20,000	\$180,000				\$200,000
		Total:				\$520,000	\$180,000			\$700,000
7	CITY	ON-STREET BIKE FACILITIES PHASE I								
		Construction	F	TEAL	\$160,000					\$160,000
		Construction	L	CITY	\$40,000					\$40,000
		Total:				\$200,000				\$200,000
	CITY	WAYFINDING PLAN IMPLEMENTATION								
		Construction	F	TAP		\$400,000				\$400,000
		Construction	L	CITY		\$100,000				\$100,000
		Total:				\$500,000				\$500,000

TABLE 4 FY 2014 - 2017 TIP PROJECT LISTING

PID:	Agency:	Project Description:	Phase:	Funding:	2013	2014	2015	2016	2017	5 Year TIP
3	CITY	RAILROAD QUIET ZONE: 24th Street and BNSF Quiet Zone Project								
		Construction	S	QUIET ZONE		\$100,000				\$100,000
		Construction	L	CITY		\$100,000				\$100,000
		Total Federal Funds:								
		Total:				\$200,000				\$200,000
4	CITY	RAILROAD QUIET ZONE: Southwest Drive at Union Pacific by US 30 (W Lincolnway)								
		Construction	S	QUIET ZONE		\$24,000				\$24,000
		Construction	L	CITY		\$24,000				\$24,000
		Total Federal Funds:								
		Total:				\$48,000				\$48,000
5	CITY	CAMPSTOOL OVERLAY: 530 feet east of Burlington Trail to Hutchings								
		Construction	S	County Consensus		\$525,000				\$525,000
		Construction	L	CITY		\$150,000				\$150,000
		Total Federal Funds:								
		Total:				\$675,000				\$675,000
6	CITY	Christensen Railroad Overpass: Design, environmental assessment, and construction of Christensen Road between Commerce Circle and US 30 (East Lincolnway) to include a bridge over the Union Pacific and the demolition of the East Pershing Railroad Bridge.								
		Construction	F	TIGER V		\$10,000,000				\$10,000,000
		Construction	L	CITY		\$2,000,000				\$2,000,000
		Construction	P	PRIVATE		\$1,000,000				\$1,000,000
		Total Federal Funds:				\$10,000,000				\$10,000,000
		Total:				\$13,000,000				\$13,000,000
	CITY	STREET AND PAVEMENT WORK								
		Construction	L	CITY	\$4,350,000	\$4,350,000	\$4,350,000	\$4,350,000	\$4,350,000	\$21,750,000
		Total Federal Funds:								\$0
		Total:				\$4,350,000	\$4,350,000	\$4,350,000	\$4,350,000	\$21,750,000
	CITY	1% CONSTRUCTION MANAGEMENT AND ADMINISTRATION								
		Construction	L	CITY	\$475,000	\$475,000	\$475,000	\$475,000	\$475,000	\$2,375,000
		Total Federal Funds:								\$0
		Total:				\$475,000	\$475,000	\$475,000	\$475,000	\$2,375,000
	CITY	STORMWATER DRAINAGE MAINTENANCE AND REPAIR PROJECTS								
		Construction	L	CITY	\$500,000	\$500,000	\$500,000	\$500,000	\$500,000	\$2,500,000
		Total Federal Funds:								\$0
		Total:				\$500,000	\$500,000	\$500,000	\$500,000	\$2,500,000

TABLE 4 FY 2014 - 2017 TIP PROJECT LISTING

PID:	Agency:	Project Description:	Phase:	Funding:	2013	2014	2015	2016	2017	5 Year TIP
	CITY	EXTENDING INFRASTRUCTURE FOR ECONOMIC DEVELOPMENT								
		Construction	L	CITY	\$250,000	\$250,000	\$250,000	\$250,000	\$250,000	\$1,250,000
		Total Federal Funds:								\$0
		Total:				\$250,000	\$250,000	\$250,000	\$250,000	\$1,250,000
23	CITY	SNYDER - 24TH TO PERSHING: Reconstruction, ADA Improvements								
		Design	L	CITY	\$200,000					\$200,000
		Construction	L	CITY		\$4,400,000				\$4,400,000
		Construction	L	WATER	\$794,403					\$794,403
		Construction	L	SEWER	\$176,112					\$176,112
		Total Federal Funds:								\$0
		Total:				\$1,170,515	\$4,400,000			\$5,570,515
25	CITY	LOGAN - NATIONWAY TO PERSHING (19TH - HUGUR TO LOGAN INCLUDED)								
		Design	L	CITY		\$240,000				\$240,000
		Construction	L	CITY		\$2,900,000				\$2,900,000
		Design	L	WATER	\$72,623					\$72,623
		Design	L	SEWER	\$25,516					\$25,516
		Construction	L	WATER		\$1,540,000				\$1,540,000
		Construction	L	SEWER		\$542,500				\$542,500
		Total Federal Funds:								\$0
Total:				\$98,139	\$5,222,500			\$5,320,639		
22	CITY	19TH - SNYDER TO MORRIE GRIND AND OVERLAY (24' WATER MAIN SNYDER TO O'NEIL INCLUDED)								
		Design	L	CITY			\$150,000			\$150,000
		Construction	L	CITY				\$1,350,000		\$1,350,000
		Design	L	WATER		\$50,000				\$50,000
		Design	L	SEWER		\$50,000				\$50,000
		Construction	L	WATER			\$635,500	\$430,500		\$1,066,000
		Construction	L	SEWER			\$385,000	\$166,250		\$551,250
		Total Federal Funds:								\$0
Total:					\$100,000	\$1,170,500	\$1,946,750	\$3,217,250		
CITY TOTALS					2013	2014	2015	2016	2017	5 Year TIP
Total Federal Funds:					\$160,000	\$10,400,000	\$0	\$0	\$0	\$10,560,000
Total State Funds:					\$250,000	\$649,000	\$0	\$0	\$0	\$899,000
Total Local Funds:					\$7,153,654	\$17,891,500	\$7,415,500	\$7,521,750	\$5,575,000	\$45,557,404
Total:					\$7,563,654	\$28,940,500	\$7,415,500	\$7,521,750	\$5,575,000	\$57,016,404

TABLE 4 FY 2014 - 2017 TIP PROJECT LISTING

PID:	Agency:	Project Description:	Phase:	Funding Source:	2013	2014	2015	2016	2017	5 Year TIP	
TRANSIT		TRANSIT BUSES	Other	S	SLIB	\$133,663					\$133,663
			Other	S	WYDOT	\$49,505					\$49,505
			Other	F	FTA	\$0	\$232,800	\$232,800	\$232,800	\$232,800	\$931,200
			Other	L	MATCHTRAN	\$10,618	\$58,200	\$58,200	\$58,200	\$58,200	\$243,418
			Total Federal Funds:		\$0	\$232,800	\$232,800	\$232,800	\$232,800	\$931,200	
		Total:		\$193,786	\$291,000	\$291,000	\$291,000	\$291,000	\$1,357,786		
		TRANSIT	DISPATCH SOFTWARE	Other	F	FTA		\$56,000			
Other	L			MATCHTRAN		\$14,000				\$14,000	
Total Federal Funds:					\$56,000				\$56,000		
Total:					\$70,000				\$70,000		
TRANSIT	GENERAL OPERATING ASSISTANCE & CAPITAL			Other	F	FTA	\$784,911	\$807,811	\$828,380	\$844,947	\$861,846
		Other	S	Section IIIB	\$6,914	\$6,914	\$6,914	\$6,914	\$6,914	\$34,570	
		Other	S	Section 5311	\$110,000	\$110,000	\$110,000	\$110,000	\$110,000	\$550,000	
		Other	L	MATCHTRAN	\$764,728	\$767,227	\$780,497	\$798,446	\$816,753	\$3,927,651	
		Total Federal Funds:		\$784,911	\$807,811	\$828,380	\$844,947	\$861,846	\$4,127,895		
		Total:		\$1,666,553	\$1,691,952	\$1,725,791	\$1,760,307	\$1,795,513	\$8,640,116		
TRANSIT TOTALS					2013	2014	2015	2016	2017	5 Year TIP	
Total Federal Funds:					\$784,911	\$1,096,611	\$1,061,180	\$1,077,747	\$1,094,646	\$5,115,095	
Total State Funds:					\$300,082	\$116,914	\$116,914	\$116,914	\$116,914	\$767,738	
Total Local Funds:					\$775,346	\$839,427	\$838,697	\$856,646	\$874,953	\$4,185,069	
Total:					\$1,860,339	\$2,052,952	\$2,016,791	\$2,051,307	\$2,086,513	\$10,067,902	

TABLE 4 FY 2014 - 2017 TIP PROJECT LISTING

PID:	Agency:	Project Description:	Phase:	Funding Source:	2013	2014	2015	2016	2017	5 Year TIP
38	COUNTY	CLEAR CREEK PARKWAY CHIPSEAL								
			L	COUNTY	\$500,000					\$500,000
		Total Federal Funds:								\$0
		Total:			\$500,000					\$500,000
40	COUNTY	CAMPSTOOL: City Limits to City Limits Chipseal								
			L	COUNTY	\$200,000					\$200,000
		Total Federal Funds:								\$0
		Total:			\$200,000					\$200,000
41	COUNTY	SWAN RANCH: Design and construction of Berwick Drive between Tundra and West Wallick; and West Wallick between Berwick Drive and Clear Creek Parkway. Paving of Clear Creek Parkway, Trumpeter Drive, Berwick Drive and Tundra Drive in the Swan Ranch First Filing Development								
		Construction	S	IRP	\$2,100,000					\$2,100,000
		Construction	S	WBC	\$2,201,782					\$2,201,782
		Construction	L	PRIVATE	\$1,144,642					\$1,144,642
		Total Federal Funds:								\$0
		Total:			\$5,446,424					\$5,446,424
42	COUNTY	SAFE ROUTES TO SCHOOL AFFLERBACH: Design and construction of a school walking path from South Fork Mobile Home Park to Afflerbach Elementary along Ave B2 ROW								
		Construction	F	SRTS		\$200,000				\$200,000
		Total Federal Funds:				\$200,000				\$200,000
		Total:				\$200,000				\$200,000
39	COUNTY	ALLISON DRAW PHASE III GREENWAY: From College Drive south to Park Ave then north on Park to College								
		Construction	F	TAP	\$360,000					\$360,000
		Construction	L	COUNTY	\$200,000					\$200,000
		Total Federal Funds:			\$360,000					\$360,000
		Total:			\$560,000					\$560,000
35	COUNTY	WEST ALLISON ROAD RECONSTRUCTION: Design and reconstruction of Allison Road between Walterscheid and South Greeley Highway								
		Construction	F	STPU				\$1,809,800		\$1,809,800
		Construction	L	CRF				\$190,200		\$190,200
		Total Federal Funds:						\$1,809,800		\$1,809,800
		Total:						\$2,000,000		\$2,000,000

COUNTY TOTALS	2013	2014	2015	2016	2017	5 Year TIP
Total Federal Funds:	\$360,000	\$200,000	\$0	\$1,809,800	\$0	\$2,369,800
Total State Funds:	\$4,301,782	\$0	\$0	\$0	\$0	\$4,301,782
Total Local Funds:	\$2,044,642	\$0	\$0	\$190,200	\$0	\$2,234,842
Total:	\$6,706,424	\$200,000	\$0	\$2,000,000	\$0	\$8,906,424

TABLE 4 FY 2014 - 2017 TIP PROJECT LISTING

PID:	Agency:	Project Description:	Phase:	Funding Source:	2013	2014	2015	2016	2017	5 Year TIP	
	AIRPORT BOARD	AIR SERVICE PROMOTION									
			Other	S	SMatchAir	\$20,000	\$20,000	\$20,000	\$20,000	\$20,000	\$100,000
			Other	L	Airport	\$20,000	\$20,000	\$20,000	\$20,000	\$20,000	\$100,000
		Total Federal Funds:									
		Total:				\$40,000	\$40,000	\$40,000	\$40,000	\$40,000	\$200,000
	AIRPORT BOARD	PAVEMENT/NAVAID MAINTENANCE									
			Other	S	SMatchAir	\$32,000	\$32,000	\$32,000	\$32,000	\$32,000	\$160,000
			Other	L	Airport	\$8,000	\$8,000	\$8,000	\$8,000	\$8,000	\$40,000
		Total Federal Funds:									
		Total:				\$40,000	\$40,000	\$40,000	\$40,000	\$40,000	\$200,000
	AIRPORT BOARD	RUBBER REMOVAL R/W 9/27 & MARK PAVEMENTS									
			Design/Construct	F	FAA	\$800,000					\$800,000
			Design/Construct	S	SMatchAir	\$32,000					\$32,000
			Design/Construct	L	Airport	\$21,333					\$21,333
			Total Federal Funds:				\$800,000				
		Total:				\$853,333					\$853,333
	AIRPORT BOARD	PURCHASE TOW BEHIND BROOM TRUCK									
			Administration	S	SMatchAir			\$100,000			\$100,000
			Administration	L	Airport			\$25,000			\$25,000
		Total Federal Funds:						\$0			\$0
		Total:						\$125,000			\$125,000
	AIRPORT BOARD	TERMINAL CONSTRUCTION									
			Construction	F	FAA				\$5,700,000		\$5,700,000
			Construction	S	SMatchAir				\$2,853,000		\$2,853,000
			Construction	L	CITY				\$4,800,000		\$4,800,000
			Construction	L	Airport				\$4,147,000		\$4,147,000
		Total Federal Funds:							\$5,700,000		\$5,700,000
		Total:							\$17,500,000		\$17,500,000
AIRPORT BOARD TOTALS					2013	2014	2015	2016	2017	5 Year TIP	
Total Federal Funds:					\$800,000	\$0	\$0	\$5,700,000	\$0	\$6,500,000	
Total State Funds:					\$84,000	\$52,000	\$152,000	\$2,905,000	\$52,000	\$3,245,000	
Total Local Funds:					\$49,333	\$28,000	\$53,000	\$8,975,000	\$28,000	\$9,133,333	
Total:					\$933,333	\$80,000	\$205,000	\$17,580,000	\$80,000	\$18,878,333	

TABLE 4 FY 2014 - 2017 TIP PROJECT LISTING

PID:	Agency:	Project Description:	Phase:	Funding Source:	2013	2014	2015	2016	2017	5 Year TIP
33	WYDOT	WYDOT ENHANCEMENTS: New Enhancements on West Lincolnway between Westland Rd to Little America, finish northside and new on southside Phase I								
			Construction	F TAP	\$190,000					\$190,000
			Construction	L CITY	\$10,000					\$10,000
			Total Federal Funds:		\$190,000					\$190,000
			Total:		\$200,000					\$200,000
32	WYDOT	BRIDGE REHAB: MM 371, 363								
			Construction	F IM		\$1,350,000				\$1,350,000
			Construction	S S MATCH HIGH		\$150,000				\$150,000
			Total Federal Funds:			\$1,350,000				\$1,350,000
			Total:			\$1,500,000				\$1,500,000
31	WYDOT	I-80 CRACK SEAL: MM 365								
			Construction	F IM		\$225,000				\$225,000
			Construction	S S MATCH HIGH		\$25,000				\$25,000
			Total Federal Funds:			\$225,000				\$225,000
			Total:			\$250,000				\$250,000
30	WYDOT	COLLEGE DRIVE CHIPSEAL/MICROSURFACING: WY212 MM .17-3.31								
			Construction	F IM		\$2,520,000				\$2,520,000
			Construction	S S MATCH HIGH		\$280,000				\$280,000
			Total Federal Funds:			\$2,520,000				\$2,520,000
			Total:			\$2,800,000				\$2,800,000
37	WYDOT	I-80 Slab Repair: MM 358-377								
			Construction	F IM		\$900,000				\$900,000
			Construction	S S MATCH HIGH		\$100,000				\$100,000
			Total Federal Funds:			\$900,000				\$900,000
			Total:			\$1,000,000				\$1,000,000
36	WYDOT	I-80: Between Cheyenne and Laramie Mill & Overlay, mp 348-357								
			Construction	F IM			\$790,000			\$790,000
			Construction	S S MATCH HIGH			\$7,110,000			\$7,110,000
			Total Federal Funds:				\$790,000			\$790,000
			Total:				\$7,900,000			\$7,900,000

TABLE 4 FY 2014 - 2017 TIP PROJECT LISTING

PID:	Agency:	Project Description:	Phase:	Funding Source:	2013	2014	2015	2016	2017	5 Year TIP		
29	WYDOT	I-25 MILL AND OVERLAY: MM 16-27	Construction	F	IM			\$4,230,000			\$4,230,000	
			Construction	S	S MATCH HIGH			\$470,000			\$470,000	
			Total Federal Funds:						\$4,230,000			\$4,230,000
		Total:						\$4,700,000			\$4,700,000	
27	WYDOT	I-25 SURFACING: MM 16-24	Construction	F	IM				\$5,760,000		\$5,760,000	
			Construction	S	S MATCH HIGH				\$640,000			\$640,000
			Total Federal Funds:							\$5,760,000		\$5,760,000
		Total:							\$6,400,000		\$6,400,000	
WYDOT TOTALS					2013	2014	2015	2016	2017	5 Year TIP		
Total Federal Funds:					\$190,000	\$4,995,000	\$5,020,000	\$5,760,000	\$0	\$15,965,000		
Total State Funds:					\$0	\$555,000	\$7,580,000	\$640,000	\$0	\$8,775,000		
Total Local Funds:					\$10,000	\$0	\$0	\$0	\$0	\$10,000		
Total:					\$200,000	\$5,550,000	\$12,600,000	\$6,400,000	\$0	\$24,750,000		

TABLE 4 FY 2014 - 2017 TIP PROJECT LISTING

PID:	Agency:	Project Description:	Phase:	Funding Source:	2013	2014	2015	2016	2017	5 Year TIP
	BOPU SEWER	REPLACE/REHAB SEWER MANHOLES IDENTIFIED BY COLLECTION SUPERVISOR								
			Construction	L Sewer	\$130,000	\$120,000	\$120,000	\$120,000	\$130,000	\$620,000
		Total:			\$130,000	\$120,000	\$120,000	\$120,000	\$130,000	\$620,000
	BOPU SEWER	UPDATE THE 2003 WATER/WASTEWATER MASTER PLAN (50% WATER AND 50% SEWER)								
			Planning	L Sewer	\$250,000					\$250,000
		Total:			\$250,000					\$250,000
65	BOPU SEWER	2600 O'NEIL AVE – Replace 200' of 6" VCP with 8" PVC. install mh at lh & replace D090MH337.								
			Design	L Sewer	\$40,000					\$40,000
		Total:			\$40,000					\$40,000
43	BOPU SEWER	600 BLOCK MAXWELL AVE: Replace 200' of 6" VCP with new 8" PVC main. Replace 2 manholes D091MH065 and D091MH372.								
			Construction	L Sewer	\$40,000					\$40,000
		Total:			\$40,000					\$40,000
44	BOPU SEWER	1600 BLOCK WARREN AVE: Clean, video, and line 425' of 9" VCP from D090MH182 to D090MH184. Rehab D090MH187.								
			Construction	L Sewer	\$74,400					\$74,400
		Total:			\$74,400					\$74,400
45	BOPU SEWER	2201 – 2229 E 19TH ST: Video, clean, and reline 570' of 10" VCP (D091MH111 east to D091MH113). Replace D091MH111 and rehab D091MH112 and D091MH113								
			Construction	L Sewer	\$99,700					\$99,700
		Total:			\$99,700					\$99,700
46	BOPU SEWER	700 Block E 17TH ST: Video, clean, and reline 350' of 8" VCP D091MH066 to D091MH067.								
			Construction	L Sewer	\$61,300					\$61,300
		Total:			\$61,300					\$61,300
47	BOPU SEWER	3306 KELLEY DRIVE: Clean, video, and line 550' of 8" VCP (D092MH150 to D092MH165).								
			Construction	L Sewer	\$96,300					\$96,300
		Total:			\$96,300					\$96,300
48	BOPU SEWER	3032 HOMESTEAD AVE: Clean, video, and reline 375' of 8" VCP (D106MH033 east to D106MH034). One point repair at 1.5' downstream of D106MH033.								
			Construction	L Sewer	\$65,600					\$65,600
		Total:			\$65,600					\$65,600
49	BOPU SEWER	3200-3300 BLOCK OF ACACIA DR: Clean, video, reline 680' of 8" VCP (D092MH137 east to end of line). Install new mh at lh rehab D092MH136 and D092MH137.								
			Construction	L Sewer	\$119,000					\$119,000
		Total:			\$119,000					\$119,000

TABLE 4 FY 2014 - 2017 TIP PROJECT LISTING

PID:	Agency:	Project Description:	Phase:	Funding Source:	2013	2014	2015	2016	2017	5 Year TIP
50	BOPU SEWER	COLE SHOPPING CENTER: Clean, video, reline 650' of 8" VCP (D092MH126 south to D092MH023). Replace D092MH127 D092MH023. Rehab D092MH128 D092MH126.								
			Construction	L Sewer	\$135,000					\$135,000
		Total:			\$135,000					\$135,000
58	BOPU SEWER	SOUTHERN CHEYENNE SEWER COLLECTION MAIN: PHASE I - This phase begins with a 24" sewer main connecting to an existing 30" sewer main located near South Industrial Drive and east of Road 128A (near the Knife River Construction Co.). The sewer main would extend about 3.8 miles in a southwesterly direction to a location near Avenue C and Artesian Road. (24" main equals about 7,000 feet and the 21" main equals about 12,500 feet)								
			Other	L Sewer		\$1,600,000				\$1,600,000
		Total:				\$1,600,000				\$1,600,000
51	BOPU SEWER	2930 – 2984 HENDERSON DR: Clean, video, and reline 670' of 8" VCP (D092MH334 south to D092MH097).								
			Construction	L Sewer		\$117,250				\$117,250
		Total:				\$117,250				\$117,250
52	BOPU SEWER	3302 YUCCA RD TO LONG VALLEY RD: Clean, video, reline 760' of 8" VCP (D092MH280 west to end of line). Install a new manhole at end of line.								
			Construction	L Sewer		\$133,000				\$133,000
		Total:				\$133,000				\$133,000
53	BOPU SEWER	4700 MOUNTAIN RD: Replace 695' of 10" VCP with 12" PVC and replace 3 manholes (D064MH069 to D064MH067).								
			Construction	L Sewer		\$139,000				\$139,000
		Total:				\$139,000				\$139,000
54	BOPU SEWER	800 PLATTE AVE: Clean, video, and reline 375' of 12" VCP from manhole D092MH225 south to D092MH227.								
			Construction	L Sewer		\$65,650				\$65,650
		Total:				\$65,650				\$65,650
57	BOPU SEWER	721 APACHE: Replace 300' of 8" VCP, install manhole at end of line and replace manhole D062MH167 east to end of line.								
			Construction	L Sewer		\$60,000				\$60,000
		Total:				\$60,000				\$60,000
59	BOPU SEWER	5147 REDMOND RD: Excavate/pipe burst 6" cast iron pipe and replace with 8" PVC or HPE pipe. Line ties into 24" line at manhole (D062MH130 north to D062MH131).								
			Construction	L Sewer		\$60,000				\$60,000
		Total:				\$60,000				\$60,000
60	BOPU SEWER	SOUTHWEST DR: Clean, video, and reline 370' from D103MH117 to 166 and D103MH044 and rehab manholes.								
			Construction	L Sewer		\$64,800				\$64,800
		Total:				\$64,800				\$64,800
56	BOPU SEWER	HILLTOP AVE: Replace 750' of 8" sewer on Hilltop, south of Basin to relieve the Sagebrush sewer. Clean remaining 350' of sewer along Hilltop, north of Sheridan.								
			Construction	L Sewer		\$170,000				\$170,000
		Total:				\$170,000				\$170,000

TABLE 4 FY 2014 - 2017 TIP PROJECT LISTING

PID:	Agency:	Project Description:	Phase:	Funding Source:	2013	2014	2015	2016	2017	5 Year TIP
64	BOPU SEWER	2152 Dell Range Blvd: Bypass pump from MH 077MH017 to 063MH055 & clean, video and line from 077MH010 east to 064MH100-1600'. Replace MH 078MH010 & 064MH097.	Construction	L Sewer		\$320,000				\$320,000
		Total:				\$320,000				\$320,000
	BOPU SEWER	WATER RECLAMATION SPECIAL PROJECTS	Construction	L Sewer			\$300,000			\$300,000
		Total:					\$300,000			\$300,000
61	BOPU SEWER	E 17TH STREET - EVANS TO SEYMOUR, PEBRICAN TO RUSSELL: Clean, video, and reline 1500' of 8" VCP.	Construction	L Sewer			\$367,500			\$367,500
		Total:					\$367,500			\$367,500
62	BOPU SEWER	CROW & STOREY BLVD: Clean and reline 270' of 8" VCP and rehab 2 manholes (D062MH050 south to D062MH052)	Construction	L Sewer			\$47,250			\$47,250
		Total:					\$47,250			\$47,250
63	BOPU SEWER	2700 BLOCK HOUSE AVE: Clean, video, reline 180' of 15" VCP, rehab 235, 238 replace risers with new rings and lids. Clean, video, reline south 360' of 15" VCP, rehab mh & replace risers with new ring and lids.	Construction	L Sewer			\$94,500			\$94,500
		Total:					\$94,500			\$94,500
66	BOPU SEWER	2615 HOUSE AVE: Reroute 8" VCP sewer line mh D090MH244, reroute sewer line to north or south side of manhole 244. Need to install 1-3 manholes on the reroute.	Construction	L Sewer			\$40,000			\$40,000
		Total:					\$40,000			\$40,000
67	BOPU SEWER	315-333 CRIBBON AVE: Replace 360' 8" VCP with 8" PVC & replace & move D104MH018 west. Replace 280' of 8" VCP, replace D104MH017 and install mh at end of line.	Construction	L Sewer			\$128,000			\$128,000
		Total:					\$128,000			\$128,000
68	BOPU SEWER	1609 E 19TH ST: Clean, video, reline 350' of 8" VCP & replace 8" PVC from D091MH101 to 102. Replace 2 manholes.	Construction	L Sewer			\$61,250			\$61,250
		Total:					\$61,250			\$61,250
69	BOPU SEWER	2800 BENT AVE: Replace 360' 8" VCP with PVC replace 2 mh (D090MH331 and D089MH055. Clean, video, reline 175' of 8" VCP from D090MH331 east to D090MH330.	Construction	L Sewer			\$102,625			\$102,625
		Total:					\$102,625			\$102,625
70	BOPU SEWER	CONVERSE MOUNTAIN RD: Bypass, pump, clean, video and line from 064MH100 east to 064MH107 2,300'- 15" VCP, inspect for infiltration and inflow. Inspect for line upsizing or pipe bursting and manhole replacements. Install date 1980. \$460,000	Construction	L Sewer			\$460,000			\$460,000
		Total:					\$460,000			\$460,000

TABLE 4 FY 2014 - 2017 TIP PROJECT LISTING

PID:	Agency:	Project Description:	Phase:	Funding Source:	2013	2014	2015	2016	2017	5 Year TIP	
	BOPU SEWER	WATER RECLAMATION SPECIAL PROJECTS									
			Construction	L	Sewer				\$300,000	\$300,000	\$600,000
		Total:							\$300,000	\$300,000	\$600,000
71	BOPU SEWER	Southern Cheyenne Sewer Collection Main Phase II: 2.8 miles of pipe line varying from 2 to 12" in diameter. Continue extension from Avenue C at Wallick Road in a westerly and southerly direction to a point west of Winchester Hills. (21" main equals about 2,500 feet, 18" main equals about 7,300 feet, 15" main equals about 3,000 feet and 12" main equals about 2,000 feet).									
			Construction	L	Sewer				\$3,500,000		\$3,500,000
		Total:							\$3,500,000		\$3,500,000
72	BOPU SEWER	Dry Creek Line: Clean, video, and reline 2700' of I0" sewers from D062MH24 1 to D062MH412. Installed 1970.									
			Construction	L	Sewer				\$472,500		\$472,500
		Total:							\$472,500		\$472,500
73	BOPU SEWER	1506 Andover- Replace 275' of 8" VCP from D077MH 194 north to lamp hole and install manhole, replace 475' of 8" VCP south to D077MH192 and replace two manholes D077MH194 and D077MH193.									
			Construction	L	Sewer				\$150,000		\$150,000
		Total:							\$150,000		\$150,000
74	BOPU SEWER	2500-2700 Blocks of Dillon Avenue- Reline from 089MH094 to 80 750' of 8" VCP, major roots at laterals and joints. Replace two manholes 089MH095 south to 089MH080.									
			Construction	L	Sewer				\$150,000		\$150,000
		Total:							\$150,000		\$150,000
77	BOPU SEWER	4200-4300 E 10th St- Replace 625' of 8" VCP with 10" or 12" PVC and replace 3 manholes 093MH192 west to 093MH141.									
			Construction	L	Sewer				\$125,000		\$125,000
		Total:							\$125,000		\$125,000
80	BOPU SEWER	1800 Block Pebrican- Replace 170' 8" VCP with 8" PVC from 091MH061 north and to end of line, reconnect 6"service 1815 Pebrican. Locate/relay 6" pipe west from manhole.									
			Construction	L	Sewer				\$70,000		\$70,000
		Total:							\$70,000		\$70,000
82	BOPU SEWER	2000 Block of Albany- Replace 340' of 8" VCP from 091MH107 to 108. Water line needs rerouted .									
			Construction	L	Sewer				\$100,000		\$100,000
		Total:							\$100,000		\$100,000
84	BOPU SEWER	3285 Forest Dr- Clean and reline 140' of 8" VCP and rehab manhole 092MH104 to 092MH105. Installed 1950.									
			Construction	L	Sewer				\$24,500		\$24,500
		Total:							\$24,500		\$24,500

TABLE 4 FY 2014 - 2017 TIP PROJECT LISTING

PID:	Agency:	Project Description:	Phase:	Funding Source:	2013	2014	2015	2016	2017	5 Year TIP
86	BOPU SEWER	2112 E Lincolnway -Clean and reline 360' of 8" VCP and replace two manholes 091MH059 east to 091MH160. Installed 1950.								
			Construction	L Sewer				\$63,000		\$63,000
			Total:					\$63,000		\$63,000
87	BOPU SEWER	2000 E 10th Street- Replace 725' of 10" VCP and three manholes 092MH350 west to 091MH182. Installed 1950.								
			Construction	L Sewer				\$145,000		\$145,000
			Total:					\$145,000		\$145,000
88	BOPU SEWER	1600 W Lincolnway Hitching Post- Bypass pump, clean and reline from 1 03MH093 to 103MH095 375'								
			Construction	L Sewer				\$66,000		\$66,000
			Total:					\$66,000		\$66,000
91	BOPU SEWER	2700-2800 Warren Avenue- By pass pump, clean and reline 370' of 9" VCP from 090MH168 to 167								
			Construction	L Sewer				\$64,750		\$64,750
			Total:					\$64,750		\$64,750
93	BOPU SEWER	611 E 4th St.: Replace 300' of 8" VCP and replace 105MH073 and install manhole at lamp hole 105MH073 east to lamp hole.								
			Construction	L Sewer					\$60,000	\$60,000
			Total:						\$60,000	\$60,000
96	BOPU SEWER	3246 Old Faithful Rd: Replace 290' of 8" VCP with 8" PVC & replace manhole 165. Replace from 092MH166 east to 092MH165.								
			Construction	L Sewer					\$58,000	\$58,000
			Total:						\$58,000	\$58,000
97	BOPU SEWER	900 E 25th Street: Clean and reline 340' of 8" VCP from 090MH042 east to 089MH099. This in on City Snyder Project 2013, needs done if not completed on this project.								
			Construction	L Sewer					\$59,500	\$59,500
			Total:						\$59,500	\$59,500
98	BOPU SEWER	1000-1100 Cleveland Avenue: Replace 670' of 8" VCP with 10" or 12" PVC & replace 2 manholes D093MH207 south D093MH 192 and reline 310' of 8" VCP and replace 2 MH.								
			Construction	L Sewer					\$134,000	\$134,000
			Total:						\$134,000	\$134,000
99	BOPU SEWER	2200 E 17th Street: Replace 330' of 8" VCP and replace two manholes from D091MH 132 east to D091MH133. Need to reroute sewer in backyard and move to ally. Eight houses on south side of ally need to reconnect back into main line.								
			Construction	L Sewer					\$66,000	\$66,000
			Total:						\$66,000	\$66,000
100	BOPU SEWER	6102 Elk Avenue: Clean, by pass pump and reline from D047MH161 south to D061MH180 8" VCP 350'.								
			Construction	L Sewer					\$70,000	\$70,000
			Total:						\$70,000	\$70,000

TABLE 4 FY 2014 - 2017 TIP PROJECT LISTING

PID:	Agency:	Project Description:	Phase:	Funding Source:	2013	2014	2015	2016	2017	5 Year TIP
101	BOPU SEWER	6100 Kevin Avenue: Replace 310' of 8" VCP and replace two manholes D048MH 148 south to D062MH046.	Construction	L Sewer					\$62,000	\$62,000
		Total:							\$62,000	\$62,000
102	BOPU SEWER	5021 Moran Avenue: Clean and reline 840' of 8" VCP and rehab two manholes from D064MH243 north to lamp hole and south to D064MH332. Install manhole at lamp hole and rehab 243 and 244	Construction	L Sewer					\$147,000	\$147,000
		Total:							\$147,000	\$147,000
103	BOPU SEWER	1100-1200 W Pershing Blvd: By pass pump, clean, and reline 370' of 10" VCP and replace D075MH027 and D075MH037.	Construction	L Sewer					\$64,750	\$64,750
		Total:							\$64,750	\$64,750
104	BOPU SEWER	3300 Alexander Ave: Remove/replace 670' of 8" VCP and replace three manholes from D077MH219 south to D077MH217.	Construction	L Sewer					\$134,000	\$134,000
		Total:							\$134,000	\$134,000
105	BOPU SEWER	100 Blk of King Ct: Remove/replace 560' of 8" VCP & replace 3 manholes from D 118MHO 16 south to D 118MHO 15 & lamp hole.	Construction	L Sewer					\$130,000	\$130,000
		Total:							\$130,000	\$130,000
106	BOPU SEWER	Dry Creek Line: Clean, video, and reline 3750' of 24" sewers from D062MH025 to D062MH240.	Construction	L Sewer					\$656,250	\$656,250
		Total:							\$656,250	\$656,250
BOPU SEWER TOTALS					2013	2014	2015	2016	2017	5 Year TIP
Total Federal Funds:					\$0	\$0	\$0	\$0	\$0	\$0
Total State Funds:					\$0	\$0	\$0	\$0	\$0	\$0
Total Local Funds:					\$1,111,300	\$2,849,700	\$1,261,125	\$5,350,750	\$2,071,500	\$12,644,375
Total:					\$1,111,300	\$2,849,700	\$1,261,125	\$5,350,750	\$2,071,500	\$12,644,375

TABLE 4 FY 2014 - 2017 TIP PROJECT LISTING

PID:	Agency:	Project Description:	Phase:	Funding Source:	2013	2014	2015	2016	2017	5 Year TIP
	BOPU WATER	UPDATE THE 2003 WATER/WASTEWATER MASTER PLAN (50% WATER AND 50% SEWER)	Planning	L Water	\$750,000					\$750,000
		Total:			\$750,000					\$750,000
75	BOPU WATER	WEST 9TH STREET - SNYDER AVE TO DEMING DRIVE: Replace existing 12" cast main with new 12" main 700'.	Construction	L Water	\$313,600					\$313,600
		Total:			\$313,600					\$313,600
76	BOPU WATER	WEAVER RD - MONTCLAIR DR TO KILLARNEY DR: Replace existing 12" cast main with new 12" main 750'.	Construction	L Water	\$153,700					\$153,700
		Total:			\$153,700					\$153,700
89	BOPU WATER	E. 7TH STREET (PEBRICAN AVE TO DUNN AVE & WARREN AVE TO EVANS AVE)- REPLACE 6" CAST MAIN WITH 8" MAIN 2050'.	Construction	L Water	\$526,400					\$526,400
		Total:			\$526,400					\$526,400
90	BOPU WATER	SYRACUSE AVE (ARAPAHOE ST. TO CARLSON ST. & HOY RD. TO MELTON ST. - REPLACE CAST MAIN WITH 8" MAIN 1560'.	Construction	L Water	\$319,800					\$319,800
		Total:			\$319,800					\$319,800
78	BOPU WATER	WINDMILL RD - MELTON ST TO PINERIDGE AVE: Replace 8" cast main with 8" main 950'.	Construction	L Water	\$194,700					\$194,700
		Total:			\$194,700					\$194,700
	BOPU WATER	WELL FIELD IMPROVEMENTS	Construction	L Water		\$600,000	\$600,000	\$600,000	\$600,000	\$2,400,000
		Total:				\$600,000	\$600,000	\$600,000	\$600,000	\$2,400,000
107	BOPU WATER	Dell Range Blvd (valve west of Pier 1 Imports to Stillwater Ave): Pipe burst/replace 8" cast main with 8" PVC main 600' (\$250/ft).	Construction	L Water		\$150,000				\$150,000
		Total:				\$150,000				\$150,000
108	BOPU WATER	Dell Range Blvd (Driftwood Dr to Frontier Mall Dr): Pipe burst/replace 8" cast main with 8" PVC main 700' (\$250/ft).	Construction	L Water		\$175,000				\$175,000
		Total:				\$175,000				\$175,000
109	BOPU WATER	Omaha Rd/Holmes St (Windwood Dr to Wills Rd): Pipe burst/replace existing 6" cast main with new 8" main 1025'.	Construction	L Water		\$210,150				\$210,150
		Total:				\$210,150				\$210,150

TABLE 4 FY 2014 - 2017 TIP PROJECT LISTING

PID:	Agency:	Project Description:	Phase:	Funding Source:	2013	2014	2015	2016	2017	5 Year TIP
110	BOPU WATER	Custer St (Buffalo Ave to Deer Ave): Pipe burst/replace existing 6" cast main with new 8" main 2000'.	Construction	L Water		\$410,000				\$410,000
		Total:				\$410,000				\$410,000
126	BOPU WATER	Dillon Avenue Water Dispensing Station Improvements: Upgrade existing station to include enlargement of water service from 3" to 4", brick veneer on enclosure, new electronic coin and keypad dispensing controls, and internal piping and water boom improvements. Work to the station will be performed by BOPU staff not including electronic dispensing control improvements of approximately \$20,000.	Construction	L Water		\$50,000				\$50,000
		Total:				\$50,000				\$50,000
127	BOPU WATER	S. Water Transmission Main Phase II: The Southern Water Transmission Main Phase II Project consists of about 11.5 miles of pipeline (42"- 12"). As of September 2012, the construction cost estimate was \$28 million. Original grant from the WWDC (\$14,029,800) was based on a total cost estimate of \$20,940,000.	Construction	L Water		\$4,261,200				\$4,261,200
		Total:				\$4,261,200				\$4,261,200
128	BOPU WATER	Water Transmission Main Phase III: This request is for engineering services, including design and construction management, easements and other miscellaneous costs. The estimated total project cost for engineering and construction is \$18,000,000. Phase II consists of about 7.5 miles of water transmission main (36" to 12"). Conceptually, the project consists of 1 mile of 36" water main from Wallick Road east to Avenue C, 1 mile of 36" water main from Avenue C north to College Drive, 1.8 miles of 20" from Avenue C and College north to an existing 20" main near First Street, 2 miles of 30" from Avenue C and College Drive east, then about 1.5 miles of 16" main north . An application will be submitted to the WWDC for consideration of grant funding in the amount of 67% of the project cost and a loan application may be submitted to the SLIB for consideration of funding from the Drinking Water State Revolving fund in the amount of 33% of the project cost.	Construction	L Water		\$1,800,000				\$1,800,000
		Total:				\$1,800,000				\$1,800,000
92	BOPU WATER	E. 19TH ST. (GARRETT ST. TO CONVERSE AVE.) – REPLACE 4" CAST MAIN WITH 8" MAIN 1450'	Construction	L Water		\$297,250				\$297,250
		Total:				\$297,250				\$297,250
79	BOPU WATER	E. 17th St Street (Dunn Ave to Holliday Park, Alexander Ave): Replace 4" main cast main with 8" main 400'.	Construction	L Water			\$82,000			\$82,000
		Total:					\$82,000			\$82,000
85	BOPU WATER	Oxford Drive (Boston Road to Durham Rd): Replace 6" cast with new 8" main 1200'.	Construction	L Water			\$246,000			\$246,000
		Total:					\$246,000			\$246,000
84	BOPU WATER	Amherst Rd: E 3rd Ave to E 5th Ave Replace 6" cast with new 8" main 500'	Construction	L Water			\$102,500			\$102,500
		Total:					\$102,500			\$102,500

TABLE 4 FY 2014 - 2017 TIP PROJECT LISTING

PID:	Agency:	Project Description:	Phase:	Funding Source:	2013	2014	2015	2016	2017	5 Year TIP
114	BOPU WATER	Dover Rd: Milton Drive to Leeds Place Replace 6" cast with new 8" main 1720'	Construction	L Water			\$352,600			\$352,600
		Total:					\$352,600			\$352,600
112	BOPU WATER	W 5th Street: Snyder Ave to Thomes Ave Remove and replace 4" cast main with new 8" main 1800'	Construction	L Water			\$369,000			\$369,000
		Total:					\$369,000			\$369,000
113	BOPU WATER	E 10th Street: Campbell Ave to Crook Ave Remove and Replace 4" cast main with new 8" main 1200'	Construction	L Water			\$240,000			\$240,000
		Total:					\$240,000			\$240,000
118	BOPU WATER	Pressure Management Project Phase II: Includes Engineering design, bidding and construction management as well as actual construction of four new pressure reducing valve stations in the northeast portion of the distribution system. Also to include a new .8 mile 8" pipeline from Ridge Road and Thomas Road to Panorama Drive from the north to provide necessary alternate feed to area.	Construction	L Water			\$934,000			\$934,000
		Total:					\$934,000			\$934,000
	BOPU WATER	Belvoir Water Development Level III Construction- Phase I: (Production wells I transmission Mains)- (WWDC Grant/Loan Application) A pipeline from King II to the eastern end of the Belvoir Ranch to collect water from 4 or five new Ogallala wells (This new pipeline would also have the capacity to carry the flows produced by the existing Borie Well Field.) a. Completion of the Belvoir #5 and #6 wells b. A new municipal class well to replace the existing Belvoir Borie Well c. A new well near test hole #8 to replace the existing Belvoir #3 d. Possibly one additional new Ogallala well pending recommendations from the consultants	Construction	L Water			\$21,000,000			\$21,000,000
		Total:					\$21,000,000			\$21,000,000
	BOPU WATER	Reimburse oversize water mains	Construction	L Water			\$300,000	\$300,000	\$300,000	\$900,000
		Total:					\$300,000	\$300,000	\$300,000	\$900,000
	BOPU WATER	Special Water Projects	Construction	L Water			\$400,000	\$400,000	\$400,000	\$1,200,000
		Total:					\$400,000	\$400,000	\$400,000	\$1,200,000
	BOPU WATER	Belvoir Ground Water Phase II: A pipeline extension from the eastern end of the Ranch to the western end of the Ranch to collect water from new wells near the existing Kennedy Well, the Lonetree #2 test well and possibly two additional wells developed in the Paleozoic formation. If Phase II were constructed between 2013 and 2016. (WWDC Grant/Loan Application) - \$24,000,000	Construction	L Water				\$24,000,000		\$24,000,000
		Total:						\$24,000,000		\$24,000,000
119	BOPU WATER	Grier Boulevard (Old Trail Rd to Henderson Dr): Replace 8" cast main with new 8" PVC main I 025 '.	Construction	L Water				\$210,125		\$210,125
		Total:						\$210,125		\$210,125

TABLE 4 FY 2014 - 2017 TIP PROJECT LISTING

PID:	Agency:	Project Description:	Phase:	Funding Source:	2013	2014	2015	2016	2017	5 Year TIP
120	BOPU WATER	Hanson Street (Old Trail Rd to Henderson Dr) : Replace 8" cast main with new 8" PVC main 860'.	Construction	L Water				\$176,300		\$176,300
		Total:						\$176,300		\$176,300
121	BOPU WATER	Pierce Avenue (Green River St to Dell Range Blvd): Replace 6" cast main with new 8" PVC main 1370'.	Construction	L Water				\$280,850		\$280,850
		Total:						\$280,850		\$280,850
122	BOPU WATER	Homestead Avenue (Hanson St to Henderson Dr): Replace 8" cast main with new 8" PVC main 860'.	Construction	L Water				\$176,000		\$176,000
		Total:						\$176,000		\$176,000
123	BOPU WATER	Campstool Road (from Liquor Comm to valve east of Lummis Ranch): Replace 4" cast main with 8" PVC main 4500'.	Construction	L Water				\$922,500		\$922,500
		Total:						\$922,500		\$922,500
	BOPU WATER	Demolish Round Top and Construct Radon Aeration for the well fields (2003 Master Plan)	Construction	L Water					\$1,750,000	\$1,750,000
		Total:							\$1,750,000	\$1,750,000
124	BOPU WATER	Lions Park (from Community House east to Amphitheater): Replace existing 6" cast main with 6" PVC main 200'. Also new 6" PVC raw water pump station for backup supply 100'	Construction	L Water					\$60,000	\$60,000
		Total:							\$60,000	\$60,000
125	BOPU WATER	Rawlins Street (Monroe Ave to Cleveland Ave): Replace existing 8" cast main with new 8" PVC main 700'.	Construction	L Water					\$143,500	\$143,500
		Total:							\$143,500	\$143,500
83	BOPU WATER	Apache Street (Ogden Rd to Mountain Rd): Replace 8" cast with new 8" main 1800'.	Construction	L Water					\$369,000	\$369,000
		Total:							\$369,000	\$369,000
81	BOPU WATER	RECYCLE WATER EXTENSION PHASE III: Mylar Park (Includes \$1.5 million for pumping 1.0 to 1.5 mgd Wastewater from the District's sewer to the Crow Creek Plant, this will serve phases III- V	Construction	L Water					\$4,500,000	\$4,500,000
		Total:							\$4,500,000	\$4,500,000
94	BOPU WATER	ONTARIO AVE. (RIO VERDE ST. TO DELL RANGE) – REPLACE 6" CAST MAIN WITH 8" MAIN 1300'.	Construction	L Water					\$266,500	\$266,500
		Total:							\$266,500	\$266,500

TABLE 4 FY 2014 - 2017 TIP PROJECT LISTING

PID:	Agency:	Project Description:	Phase:	Funding Source:	2013	2014	2015	2016	2017	5 Year TIP
95	BOPU WATER	PLAINVIEW (CHAPEL HILL DR. TO BLUE BLUFF RD.) – REPLACE 8" CAST MAIN WITH 8" MAIN 1350'.								
			Construction	L Water					\$276,750	\$276,750
		Total:							\$276,750	\$276,750

BOPU WATER TOTALS					2013	2014	2015	2016	2017	5 Year TIP
Total Federal Funds:					\$0	\$0	\$0	\$0	\$0	\$0
Total State Funds:					\$0	\$0	\$0	\$0	\$0	\$0
Total Local Funds:					\$2,258,200	\$7,953,600	\$24,626,100	\$27,065,775	\$8,665,750	\$70,569,425
Total:					\$2,258,200	\$7,953,600	\$24,626,100	\$27,065,775	\$8,665,750	\$70,569,425

TABLE 5
ESTIMATE OF AVAILABLE FUNDS FOR FY 2014-2017
TRANSPORTATION PROJECTS
Appendix B explains abbreviations used in the Funding Source.

FUNDING CATEGORY	FY 2014	FY 2015	FY 2016	FY 2017	TOTAL
FEDERAL					
FTA	\$1,096,611	\$1,061,180	\$1,077,747	\$1,094,646	\$4,330,184
FAA			\$5,700,000		\$5,700,000
IM	\$4,995,000	\$5,020,000	\$5,760,000	\$0	\$15,775,000
STP-U			\$1,809,800		\$1,809,800
TAP Grant	\$400,000				\$400,000
TIGER V Grant	\$10,000,000				\$10,000,000
SRTS	\$200,000				\$200,000
TOTAL FEDERAL FUNDS	\$16,691,611	\$6,081,180	\$14,347,547	\$1,094,646	\$38,214,984
STATE					
Section 5311	\$110,000	\$110,000	\$110,000	\$110,000	\$440,000
Section IIIB	\$6,914	\$6,914	\$6,914	\$6,914	\$27,656
SMatchAir	\$52,000	\$152,000	\$2,905,000	\$52,000	\$3,161,000
Quiet Zone	\$124,000				\$124,000
County Consensus	\$525,000				\$525,000
State Match High	\$555,000	\$7,580,000	\$640,000	\$0	\$8,775,000
TOTAL STATE FUNDS	\$1,372,914	\$7,848,914	\$3,661,914	\$168,914	\$13,052,656
LOCAL					
Airport	\$28,000	\$53,000	\$4,175,000	\$28,000	\$4,284,000
BOPU Sewer	\$3,442,200	\$1,646,125	\$5,517,000	\$2,071,500	\$12,676,825
BOPU Water	\$9,543,600	\$24,626,100	\$27,065,775	\$8,665,750	\$69,901,225
City Funds	\$15,529,000	\$6,245,000	\$10,375,000	\$5,575,000	\$37,724,000
MatchTrans	\$839,427	\$838,697	\$856,646	\$874,953	\$3,409,723
CRF	\$180,000		\$190,200		\$370,200
TOTAL LOCAL FUNDS	\$29,562,227	\$33,408,922	\$48,179,621	\$17,215,203	\$128,365,973
YEAR	FY 2014	FY 2015	FY 2016	FY 2017	TOTAL
TOTAL FEDERAL FUNDS	\$16,691,611	\$6,081,180	\$14,347,547	\$1,094,646	\$38,214,984
TOTAL STATE FUNDS	\$1,372,914	\$7,848,914	\$3,661,914	\$168,914	\$13,052,656
TOTAL LOCAL FUNDS	\$29,562,227	\$33,408,922	\$48,179,621	\$17,215,203	\$128,365,973
GRAND TOTAL	\$47,626,752	\$47,339,016	\$66,189,082	\$18,478,763	\$179,633,613

4 – Pavement Management System

The pavement management analysis (PMA) program reviews all of the paved streets in the Cheyenne area. A PMA is a computerized information system designed to assist Cheyenne's decision-makers in the process of managing the network of streets. The PMA was originally started, operated and maintained by the Metropolitan Planning Organization (Cheyenne MPO), but it was turned over to the City Public Works Department in 2009. This computer program can store, retrieve, and process pavement-related condition inventory data, allowing the user to analyze the current condition, future performance, and expected monetary needs for Cheyenne's pavement network.

The accumulated investment of public funds expended to construct and maintain a pavement network generally amounts to a substantial figure. For example, if the average reconstruction cost per centerline mile is \$500,000 and a pavement network has 300 centerline miles, then the replacement cost of the network is in the order of \$150 million.

A pavement network is therefore a valuable asset to the population that it serves, and it should be managed such that the value of the asset is maintained at an optimal level over the long-term. In this regard, experience has shown that over time it is less expensive to invest in preventative maintenance and/or rehabilitation on an ongoing basis rather than in sporadic reconstruction.

In order to implement this less expensive approach, information containing the condition of the network, its rate of deterioration, and the impact of maintenance and rehabilitation efforts on pavement serviceability levels is required. It is therefore necessary to monitor the performance of each section of the network on an ongoing basis. This ongoing monitoring is a key component of a comprehensive pavement management system.

A program has been developed to utilize the Optional 1% Sales Tax set aside for street maintenance. With each tax election more funding is directed for street maintenance. Table 6 lists the streets proposed to receive maintenance attention in the City.

Table 6
2013 City Pavement Management Program
Subject to Change

2013 City Overlay

	From	To
West 29th St	Randall Ave	House Ave
East 21st St	Central	Morrie
Hot Springs	Nationway	Chestnut
West Fox Farm	Hynds	Cribbon
West 3rd Street	Hynds	Cribbon
Arp Ave	West Fox Farm	West 4th Street
Hynds Ave	West Fox Farm	West 4th Street
Stinson Ave	West Fox Farm	West 4th Street
McComb Ave	West Fox Farm	West 4th Street
Cribbon Ave	West Fox Farm	West 4th Street

2013 Street and Alley Overlay

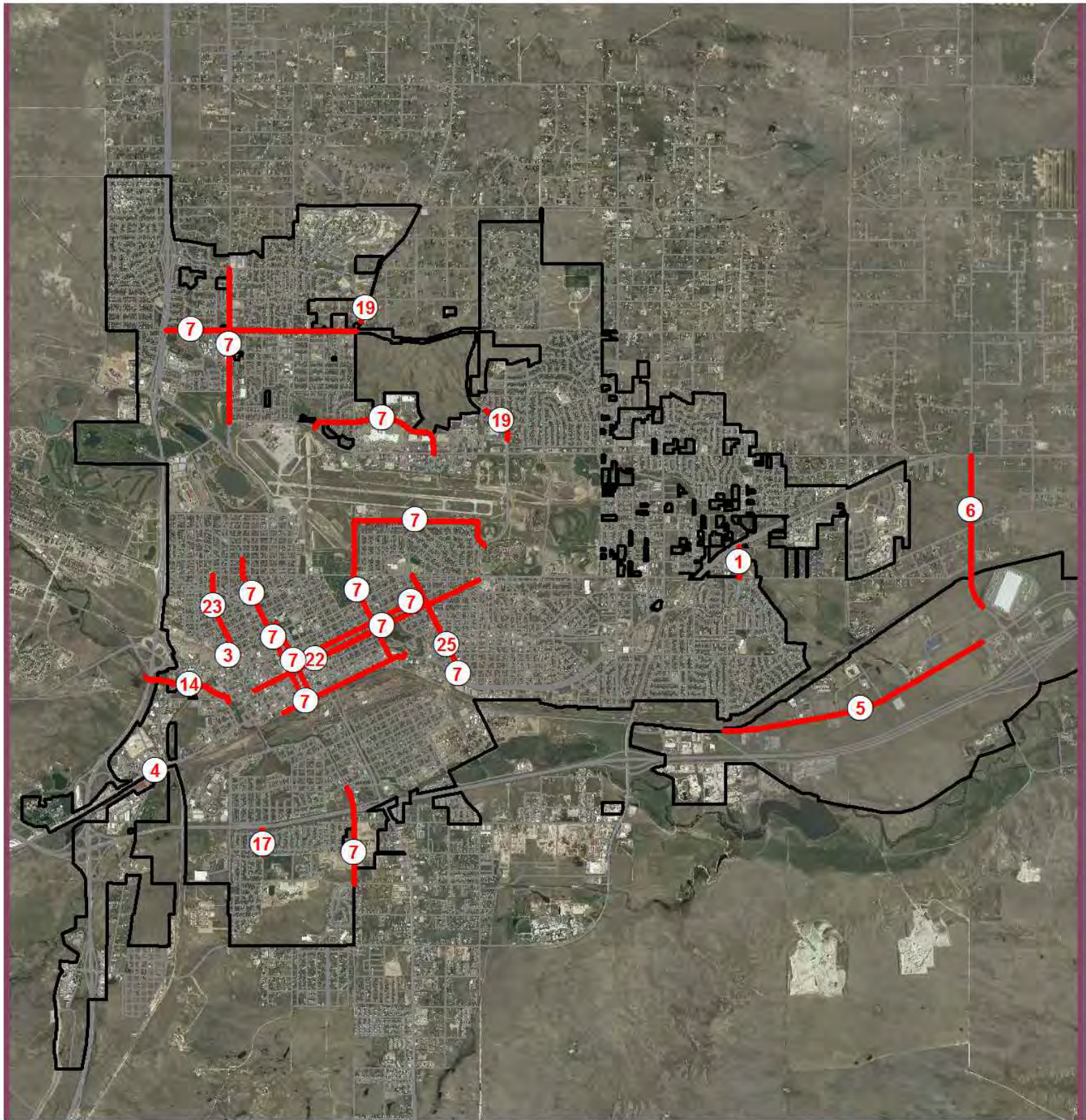
	From	To
Seymour Ave	21st	Pershing
Stanfield Ave	West 4th St	West 8th St
O'Neil Ave	South End	East 8th Ave
East 8th St	O'Neil	Stanfield
East 15th St	Logan	Converse
East 16th St	Logan	Converse
Dey	South End	West Leisher
West Jefferson	Dey	Stanfield
Reed Ave	West Jefferson	West Leisher
Norma	Reed	West Leisher
Bent	West Jefferson	West Leisher
Desmet	West Jefferson	West Leisher
Cribbon	West Allison Rd	West Leisher

Appendix A - Funding Definitions

Federal	ACIM	Advance Construction Interstate Maintenance
Federal	FAA	Federal Aviation Administration
Federal	FTA	Federal Transit Administration
Federal	HP	High Priority
Federal	HSIP	Highway Safety Improvement Program
Federal	IM	Interstate Maintenance
Federal	MG	Minimum Guarantee
Federal	NH	National Highway
Federal	SRTS	Safe Routes to School
Federal	SSP-TO	State Safety Program Traffic Operations
Federal	STP	Surface Transportation Program
Federal	STP-E	Surface Transportation Program Enhancement
Federal	STP-U	Surface Transportation Program - Urban
Federal	TEAL	Transportation Enhancement
Non-Federal	Airport	Airport Board
Non-Federal	BOPUS	Board of Public Utilities - Sewer Projects
Non-Federal	BOPUW	Board of Public Utilities - Water Projects
Non-Federal	City	City Funds
Non-Federal	City Gen	City General Fund Account
Non-Federal	CMP	Contract Maintenance Program
Non-Federal	CMP-PM	Contract Maintenance Program - Pavement Maintenance
Non-Federal	CRF	County Road Fund
Non-Federal	IRP	State Industrial Road Project
Non-Federal	LOCALMATCH	Local Matching Funds
Non-Federal	MATCHTRANS	Local Transit Matching Funds
Non-Federal	Scon	State Construction Project
Non-Federal	Section IIIB	State Transit Funding
Non-Federal	Section 5311	State Transit Funding
Non-Federal	Sloan	State Loan and Investment Board
Non-Federal	SMATCHAir	State Matching Funds - Airport Projects
Non-Federal	SMATCHHigh	State Matching Funds - Highway Projects

Appendix B – Maps

2013 - 2017 Transportation Improvement Program



0 0.75 1.5 Miles

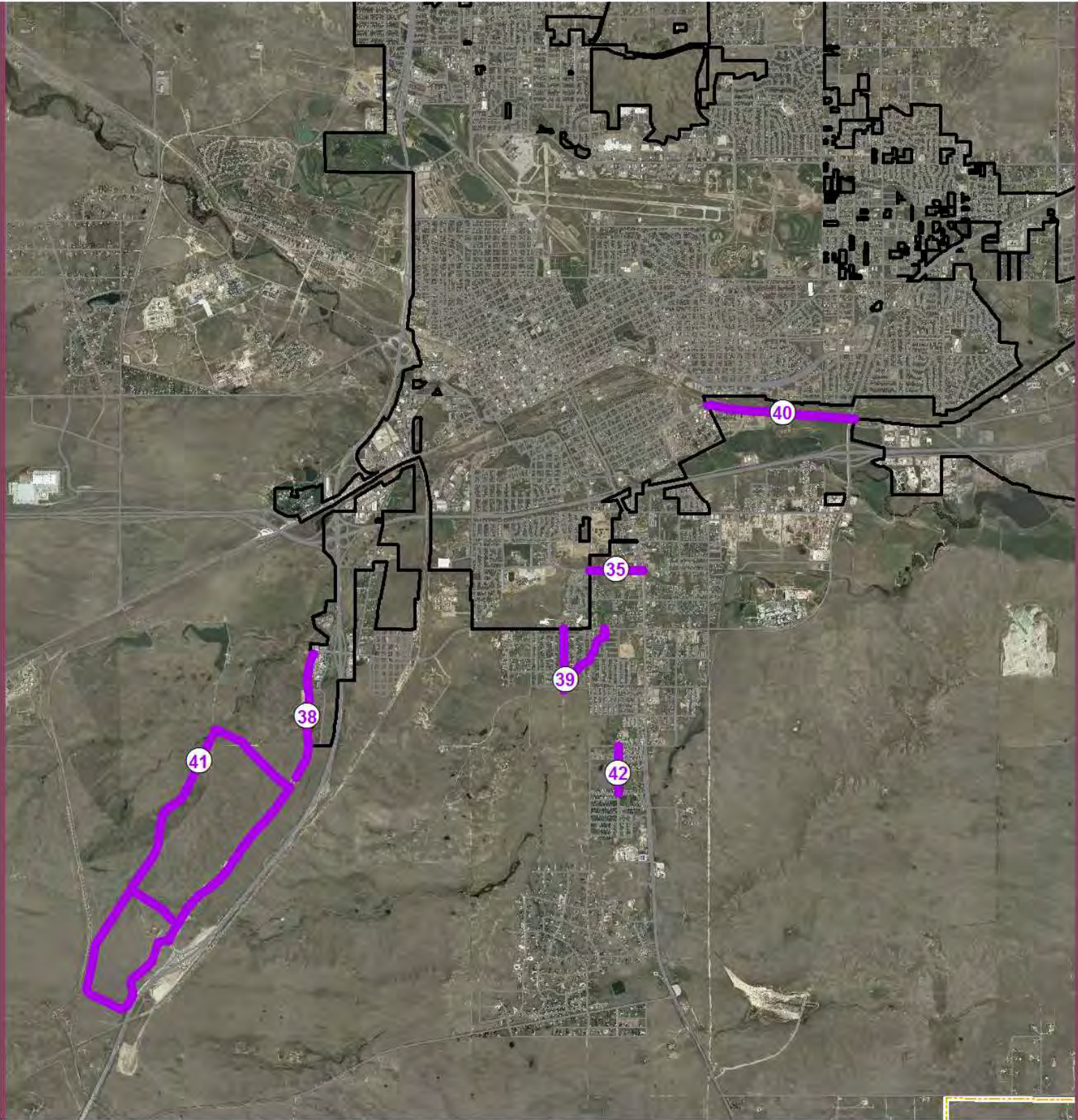
This map is made possible through the Cheyenne and Laramie County Cooperative GIS (CLCCGIS) Program and is for display purposes only. The CLCCGIS invokes its sovereign and governmental immunity in allowing access to or use of this data, makes no warranties as to the validity, and assumes no liability associated with the use or misuse of this information.

TIP Projects

- City
- City Limits
- MPO Boundary

June 2013

2013 - 2017 Transportation Improvement Program

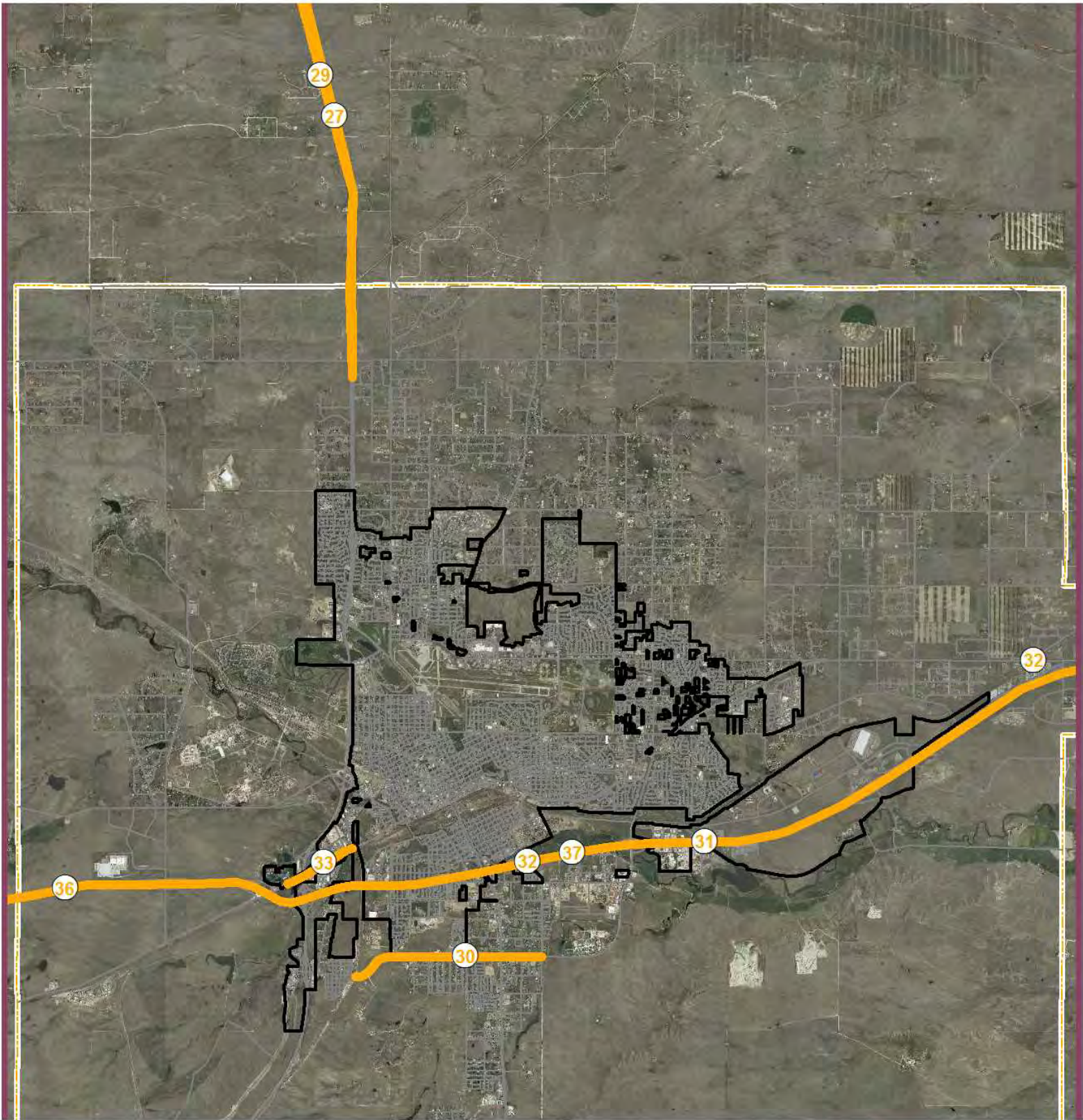


0 0.75 1.5 Miles

This map is made possible through the Cheyenne and Laramie County Cooperative GIS (CLCCGIS) Program and is for display purposes only. The CLCCGIS invokes its sovereign and governmental immunity in allowing access to or use of this data, makes no warranties as to the validity, and assumes no liability associated with the use or misuse of this information.

- TIP Projects**
- County
 - City Limits
 - MPO Boundary

2013 - 2017 Transportation Improvement Program



0 1.25 2.5 Miles

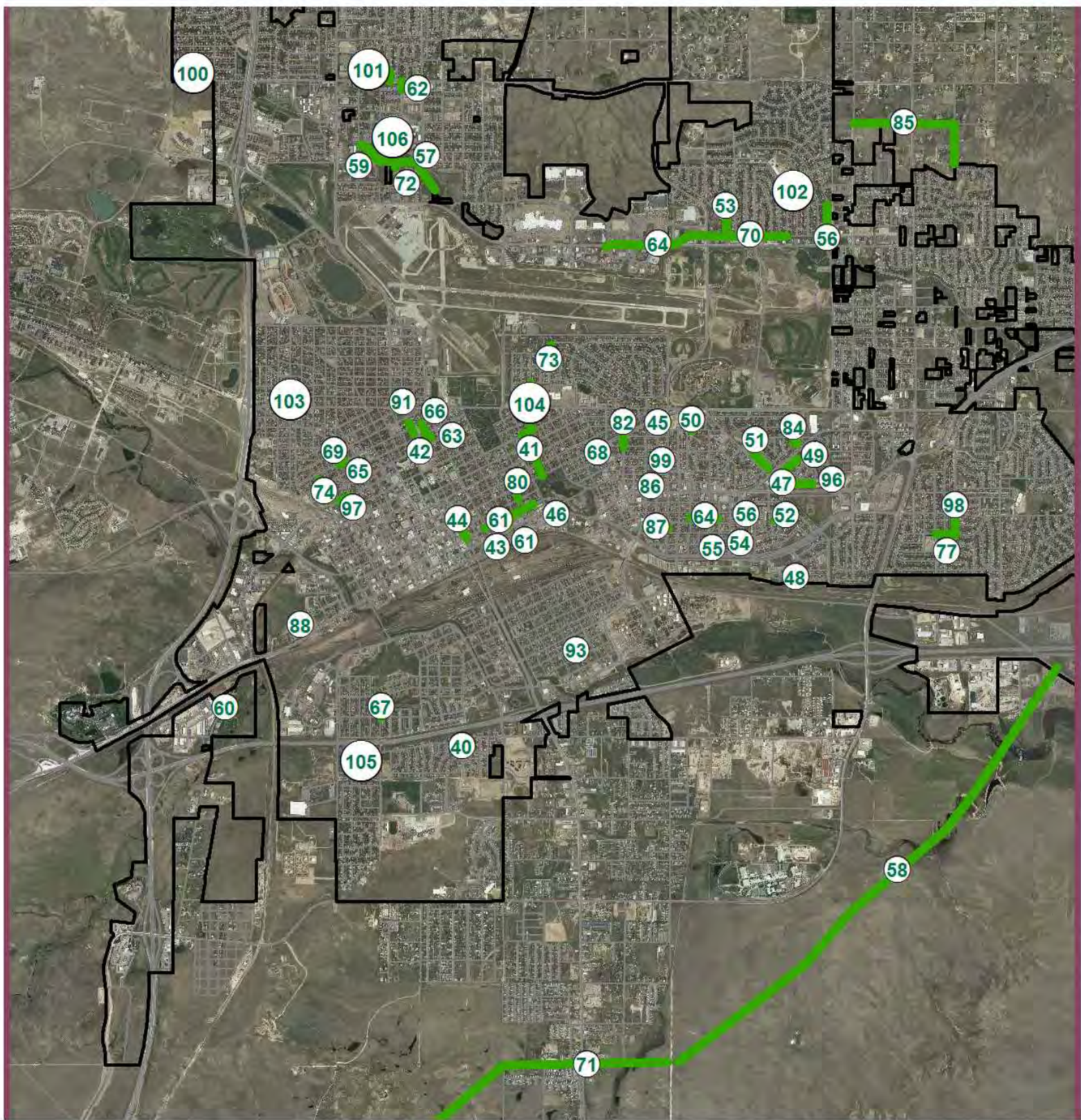
This map is made possible through the Cheyenne and Laramie County Cooperative GIS (CLCCGIS) Program and is for display purposes only. The CLCCGIS invokes its sovereign and governmental immunity in allowing access to or use of this data, makes no warranties as to the validity, and assumes no liability associated with the use or misuse of this information.

TIP Projects

- WYDOT
- City Limits
- MPO Boundary

June 2013

2013 - 2017 Transportation Improvement Program



0 0.5 1 Miles

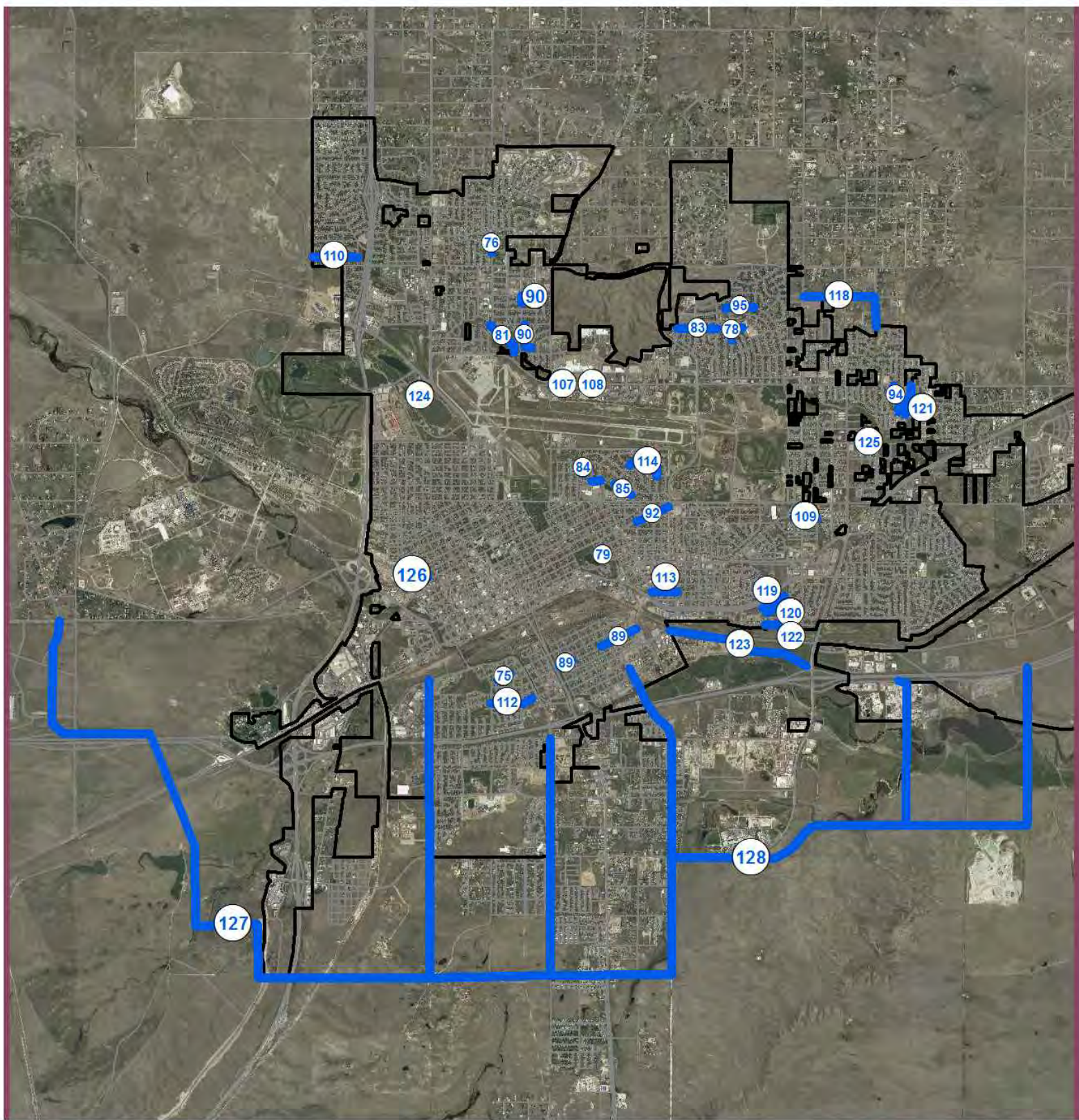
This map is made possible through the Cheyenne and Laramie County Cooperative GIS (CLCCGIS) Program and is for display purposes only. The CLCCGIS invokes its sovereign and governmental immunity in allowing access to or use of this data, makes no warranties as to the validity, and assumes no liability associated with the use or misuse of this information.

TIP Projects

- BOPU Sewer
- City Limits
- MPO Boundary

June 2013

2013 - 2017 Transportation Improvement Program



0 0.75 1.5
Miles

This map is made possible through the Cheyenne and Laramie County Cooperative GIS (CLCCGIS) Program and is for display purposes only. The CLCCGIS invokes its sovereign and governmental immunity in allowing access to or use of this data, makes no warranties as to the validity, and assumes no liability associated with the use or misuse of this information.

TIP Projects

- BOPU Water
- City Limits
- MPO Boundary

June 2013

Appendix C - Self-Certification

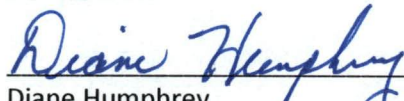
In accordance with 23 CFR 450.334, the Wyoming Department Of Transportation, and the Cheyenne Metropolitan Planning Organization for the Cheyenne urbanized area hereby certify that the transportation planning process is addressing the major issues in the metropolitan planning area and is being conducted in accordance with all applicable requirements of:

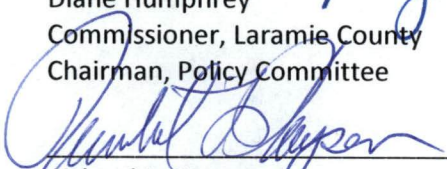
- (1) 23 U.S.C. 134, 49 U.S.C. Section 5303, and 23 CFR Part 450;
- (2) Sections 174 and 176(c) and (d) of the Clean Air Act as amended (42 U.S.C. 7504, 7506(c) and (d) and 40 CFR 93);
- (3) Title VI of the Civil Rights Act of 1964, as amended (42 U.S.C. 2000d-1) and 49 CFR part 21;
- (4) 49 U.S.C. 5332, prohibiting discrimination on the basis of race, color, creed, national origin, sex or age in employment or business opportunity;
- (5) Section 1101(b) of the Moving Ahead for Progress in the 21st Century Act (Pub. L. 112-141) and 49 CFR Part 26 regarding the involvement of Disadvantaged Business Enterprises in USDOT funded planning projects;
- (6) 23 CFR part 230, regarding the implementation of an equal employment opportunity program on Federal and Federal-aid highway construction contracts;
- (7) The provisions of the Americans with Disabilities Act of 1990 (42 U.S.C. 12101 et seq.) and 49 CFR parts 27, 37, and 38;
- (8) Older Americans Act, as amended (42 U.S.C. 6101), prohibiting discrimination on the basis of age in programs or activities receiving Federal financial assistance;
- (9) Section 324 of CFR 23, regarding prohibition of discrimination based on gender; and
- (10) Section 504 of the Rehabilitation Act of 1973 and 49 CFR part 27 regarding discrimination against individuals with disabilities.

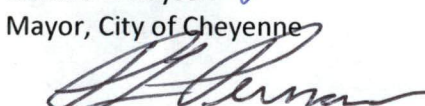
The Policy Committee of the Metropolitan Planning Organization, has reviewed and approved on the 25th day of June 2013, this Transportation Improvement Program for Fiscal Years '14-'17.

Metropolitan Planning Organization


AUTHORITY:



Diane Humphrey
Commissioner, Laramie County
Chairman, Policy Committee


Richard L. Kaysen
Mayor, City of Cheyenne


Pat Persson, District Engineer,
Wyoming Department of Transportation

ATTEST:


Thomas M. Mason
MPO Director


Date