

How Do We Get There? Improving Transportation Safety in Wyoming



Legislative Briefing

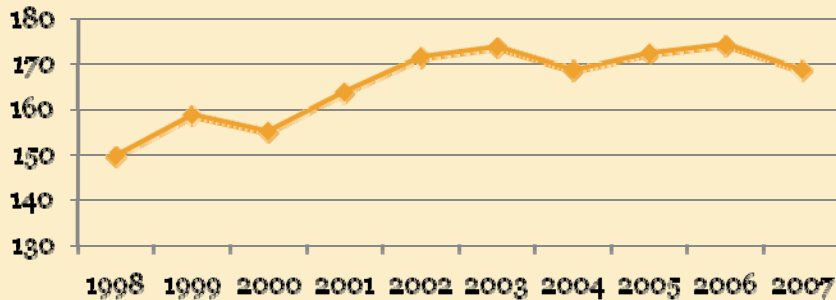
February 19, 2010



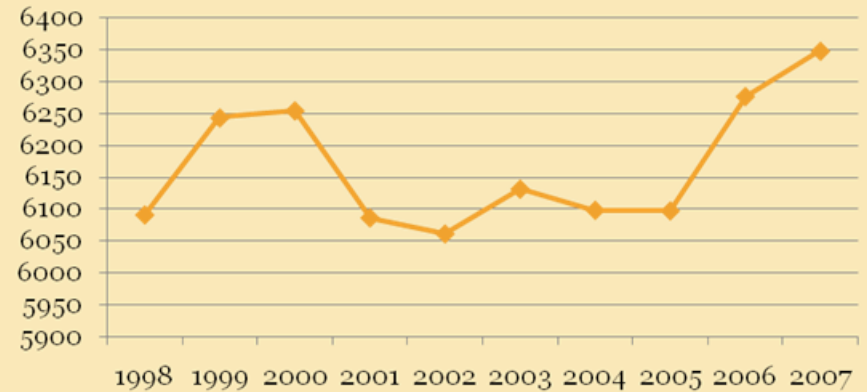
The WY Transportation Safety Problem



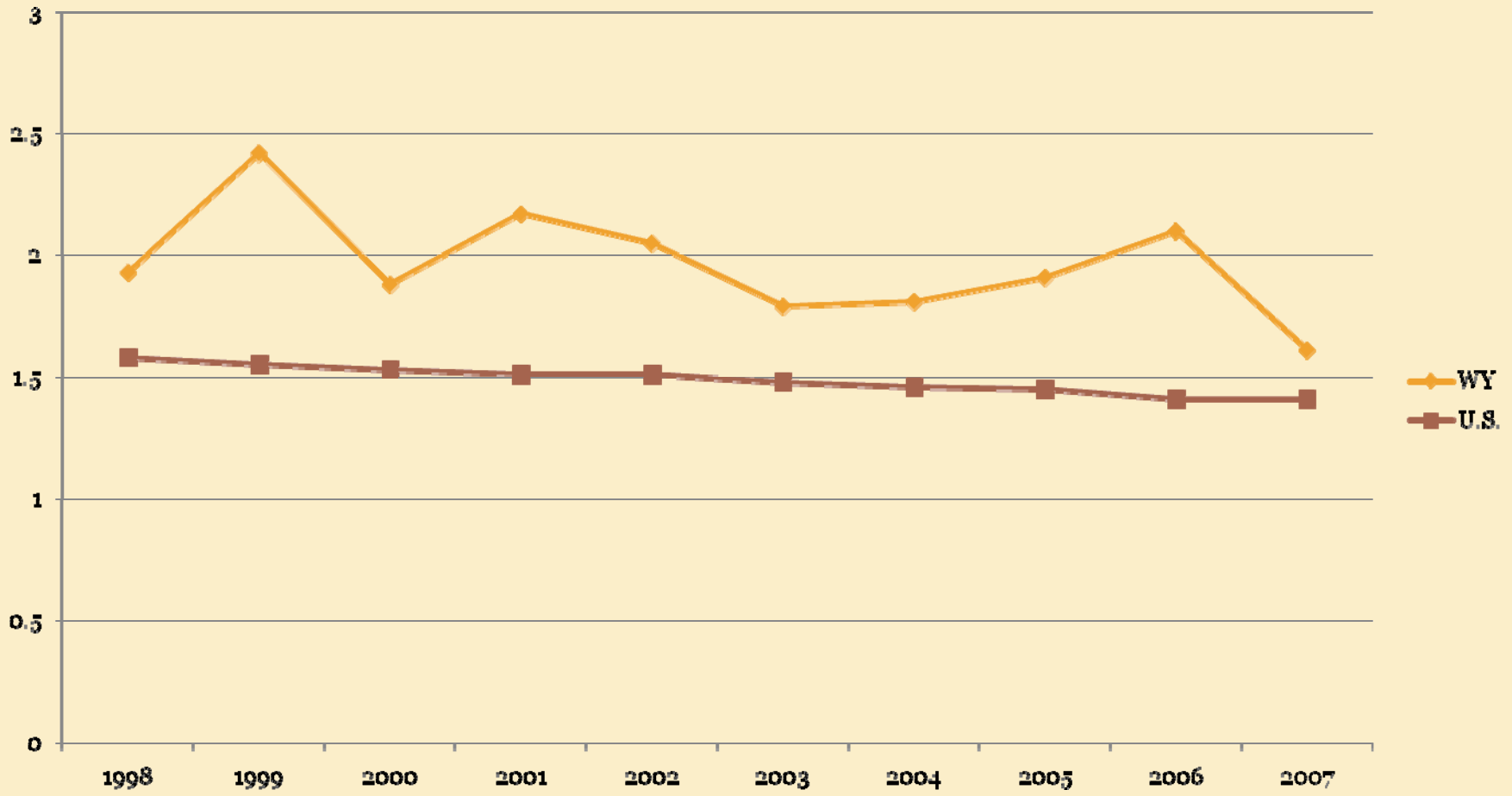
Fatalities 5-Year Rolling Average



Injuries 5-Year Rolling Average



Fatality Rate

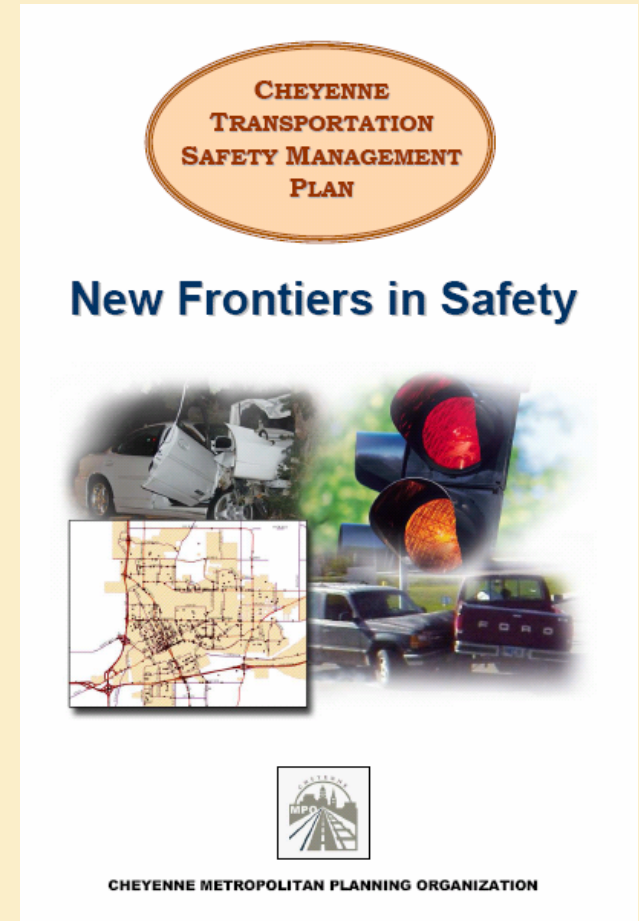


Note: fatalities per 100 million vehicle miles driven

Innovative Solutions to Save Lives



- **Cheyenne MPO Leadership**
- **Transportation Safety Management Plan**
 - Multiple Partners
 - ✦ 4Es of safety
 - Enforcement
 - Engineering
 - Emergency Response
 - Education



Key Problem Areas



- **Emphasis Areas**

- Impaired
- Occupant Protection
- Older
- Younger
- Distracted
- Intersections



Implementing the Safety Plan



- **Six Emphasis Area Teams**
 - Multidisciplinary
 - Regular meetings
 - Identify proven safety strategies
 - Implement strategies

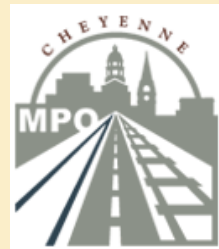




Potential Statewide Strategies



- **Medical Advisory Board**
- **Primary Safety Belt Law**
- **Alternative Transportation**



Medical Advisory Board



Driving Safely As Long As Possible



- Drivers of all ages have health issues that may affect safe driving
- Older Drivers
 - 12.2 % of the Wyoming population is age 65 or over



Driving Safely As Long As Possible



- **Current licensing review process by WDOT Driver Services**
 - Trained staff but without medical certifications
 - ✦ Observation, medical evaluations, retesting
 - WY doctors not required to provide information about patients
 - No Medical Advisory Board for guidance on driving impacts of health conditions, especially rare conditions

Impacts of Not Having a Medical Advisory Board

- People may be unnecessarily retested
- People may be restricted unnecessarily
- Lost opportunity for screening of alcohol dependence

Medical Advisory Board



- **NHTSA and AAA recommend MABs in each state**
- **Key elements of a MAB**
 - Comprised of doctors and other health professionals
 - Review cases and make licensing recommendations
 - Compensation of board members

MAB Benefits

- Driver licensing decisions made by certified medical professionals
- Eliminate unnecessary/potentially risky retesting
- Licensing decisions more tailored to individual situations
- Can screen for alcohol dependence/reduce DUI

Alternative Transportation to Reduce DUI



Impaired Driving in WY



- Alcohol was a factor in 33.8 percent of fatal crashes in 2007.
- 83 percent of traffic crashes involve alcohol
- DUI arrests account for 37.5 percent of all arrests



Alternative Transportation



- **Characteristics of Successful Alternative Transportation Programs**
 - Wide coverage of times
 - Geography
 - Individuals
 - Fewest practical barriers to use

Tipsy Taxi - Casper



- **Tipsy Taxi**
 - Initiated during 2008 holiday season
 - Vouchers for taxi ride available at restaurants, bars, from taxi companies
 - **X** rides provided
 - ***Reduction in DUI in Casper?***

TIPSY TAXI
~ Avoid a DUI Tonight ~
FREE Taxi Home from any Bar or Party
~ No Strings Attached ~
Call: 234-8294
Saving You from a DUI - 24 | 7 | 365
Details at: www.CasperTipsyTaxi.com

TIPSY TAXI
~ Avoid a DUI Tonight ~
FREE Taxi Home from any Bar or Party
~ No Strings Attached ~
Call: 234-8294
Saving You from a DUI - 24 | 7 | 365
Details at: www.CasperTipsyTaxi.com

TIPSY TAXI
~ Avoid a DUI Tonight ~
FREE Taxi Home from any Bar or Party
~ No Strings Attached ~
Call: 234-8294
Saving You from a DUI - 24 | 7 | 365
Details at: www.CasperTipsyTaxi.com

Sustained Alternative Transportation



- **More communities in WY need alternative transportation to reduce DUI**
- **Sustained funding is critical**
 - Ensures continuity of programs
 - Creates and sustains safer behaviors
- **Funding Option in WY**
 - Charge to each DUI arrestee
 - Dedicated fund to support ongoing programs in more communities

Primary Safety Belt Law



Safety Belt Use



- **Wyoming has the second lowest safety belt use in the country**
 - WY - 68.6% compared to 83% nationwide in 2008
 - Belt use *decreased* in 2008
- **In WY only secondary enforcement is permitted**
 - Police cannot stop a vehicle for only a safety belt violation
 - People feel less chance of “getting caught” – lower belt use

Impact of Low Belt Use



- **65 percent of workplace fatalities in WY are transportation related (2003-2007)**
 - Critical industries in WY face huge impacts
 - ✦ 40 percent of oil/gas workplace fatalities are transportation related
 - 26 percent of workplace transportation fatalities involve lack of safety belt use
- **Overall, 61 percent of transportation fatalities are unbelted**

Business Perspective



- **EnCana requires safety belt use by all employees on the job**
- **But without primary law, high rates of workplace fatalities on highways are likely to continue**



If a Primary Belt Law is Implemented in WY...



- Safety belt use rate expected to increase 13 percentage points
- Reduce severity of crashes and save lives
- State of WY could save \$2.6 million from injuries prevented in 2010 on medical costs
- Total savings to all payers of more than \$20.9 million



How Do We Get There? Improving Transportation Safety in Wyoming



Legislative Briefing

February 19, 2010

