



# Welcome

## Thank you for joining us!

### CHEYENNE FRONTIER DAYS TRAFFIC STUDY & TRANSPORTATION PLAN PUBLIC INFORMATION MEETING

#### STUDY STEERING COMMITTEE MEMBERS:



#### Cheyenne Frontier Days:

- Bill Berg
- Tom Hersig
- Buck Reisner
- Ron Newnum

#### Wyoming Dept. of Transportation

- Joel Meena
- Jeff Mellor
- Mark Wingate

#### Laramie County School District #1

- Merle Smith
- Nancy Nelson
- Jim Rudell
- Stephanie Ashworth
- Wesley Fuller

#### City of Cheyenne

- Nathan Beauheim

#### Cheyenne Police Department

- Lt. Howard Smith
- Sgt. John Gay

#### Cheyenne Transit Program

- Renae Jording

#### City Council

- Scott Roybal

## STUDY GOALS:

- Resolve 8<sup>th</sup> Avenue traffic/pedestrian conflict problems: Separate pedestrian, bus and traffic conflicts
- Improve key intersection traffic operation
- Reduce amount of time Cheyenne Police Department officers and Cheyenne Frontier Days volunteers are in the roadway directing traffic
- Increase overall transportation safety
- Maximize 'Park N Ride' bus operation

## CFD FACTS:

- 2017 attendance was 244,000 people
- Over 2,500 volunteers work year-round to ensure that CFD is a success
- The current seating capacity for a rodeo is 15,000
- The current capacity for a night show is 25,000
- The economic impacts resulting from direct visitor spending surrounding the 2015 CFD event totaled approximately \$28 million {Dean Runyan Associates}





# 2017 TRANSPORTATION OBSERVATIONS



'PARK N RIDE' BUS BOARDING



CAREY AVE. AND 8TH AVE. PEDESTRIAN AND VEHICLE CONFLICTS.  
INTERSECTION UNDER OFFICER COTROL.



PEDESTRIAN / 'PARK N RIDE' BUS CONFLICTS



VEHICULAR TRAFFIC BACKED UP ON CENTRAL AVE., WEST OF KENNEDY RD.



PEDESTRIAN / VEHICLE / BUS CONFLICTS ON 8TH AVE.



VEHICULAR TRAFFIC BACKED UP ON 8TH AVE. TO CENTRAL AVE.



PEDESTRIAN / BUS CONFLICTS AT 'PARK N RIDE' BULL LOT



PEDESTRIANS IN ROADWAY—LACK OF SIDEWALKS



# 8TH AVENUE SHORT-TERM IMPROVEMENTS

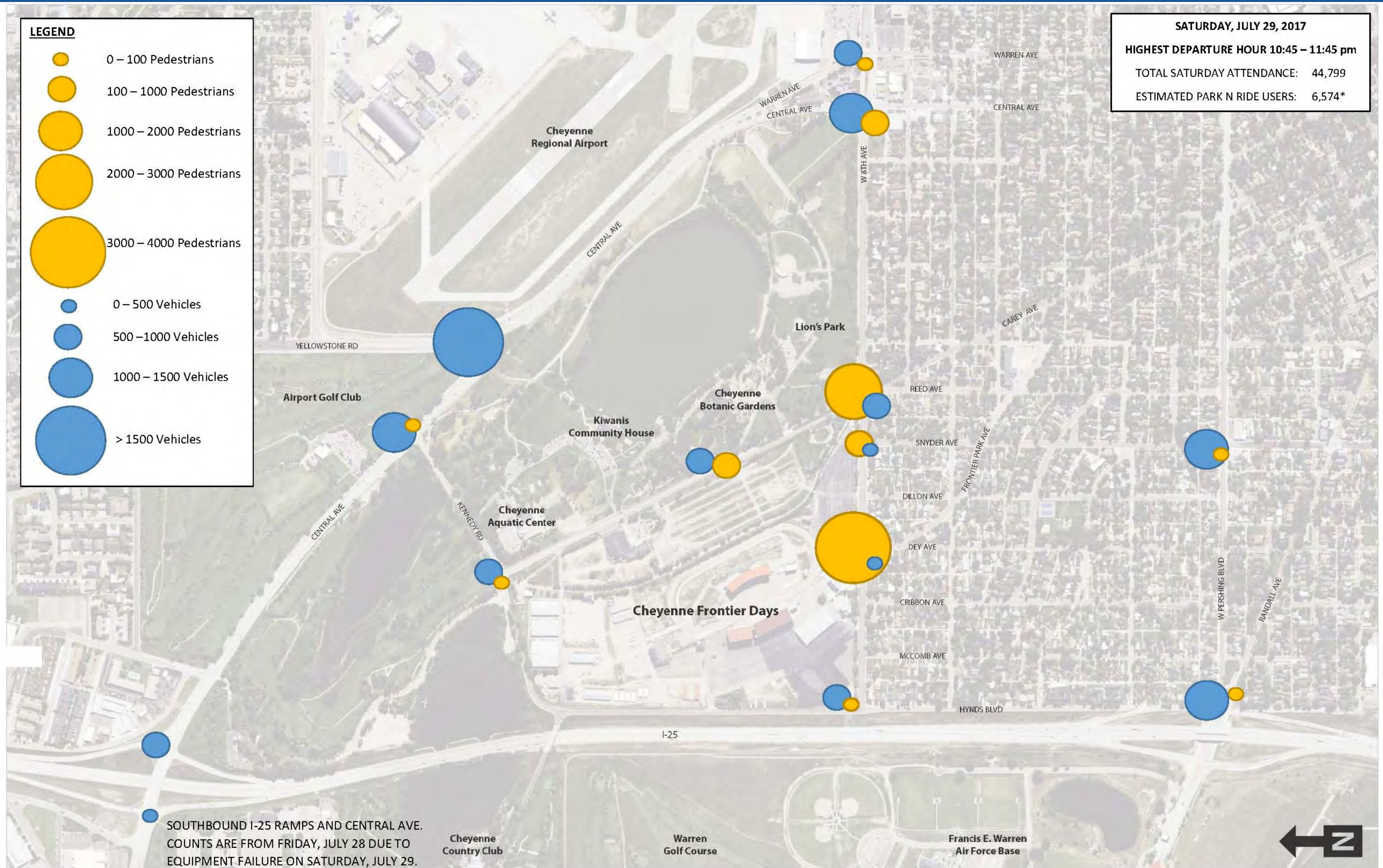


# 8TH AVENUE LONG-TERM IMPROVEMENTS





# 2017 TRAFFIC / PEDESTRIAN INTERSECTION VOLUMES (10:45 PM—11:45 PM)

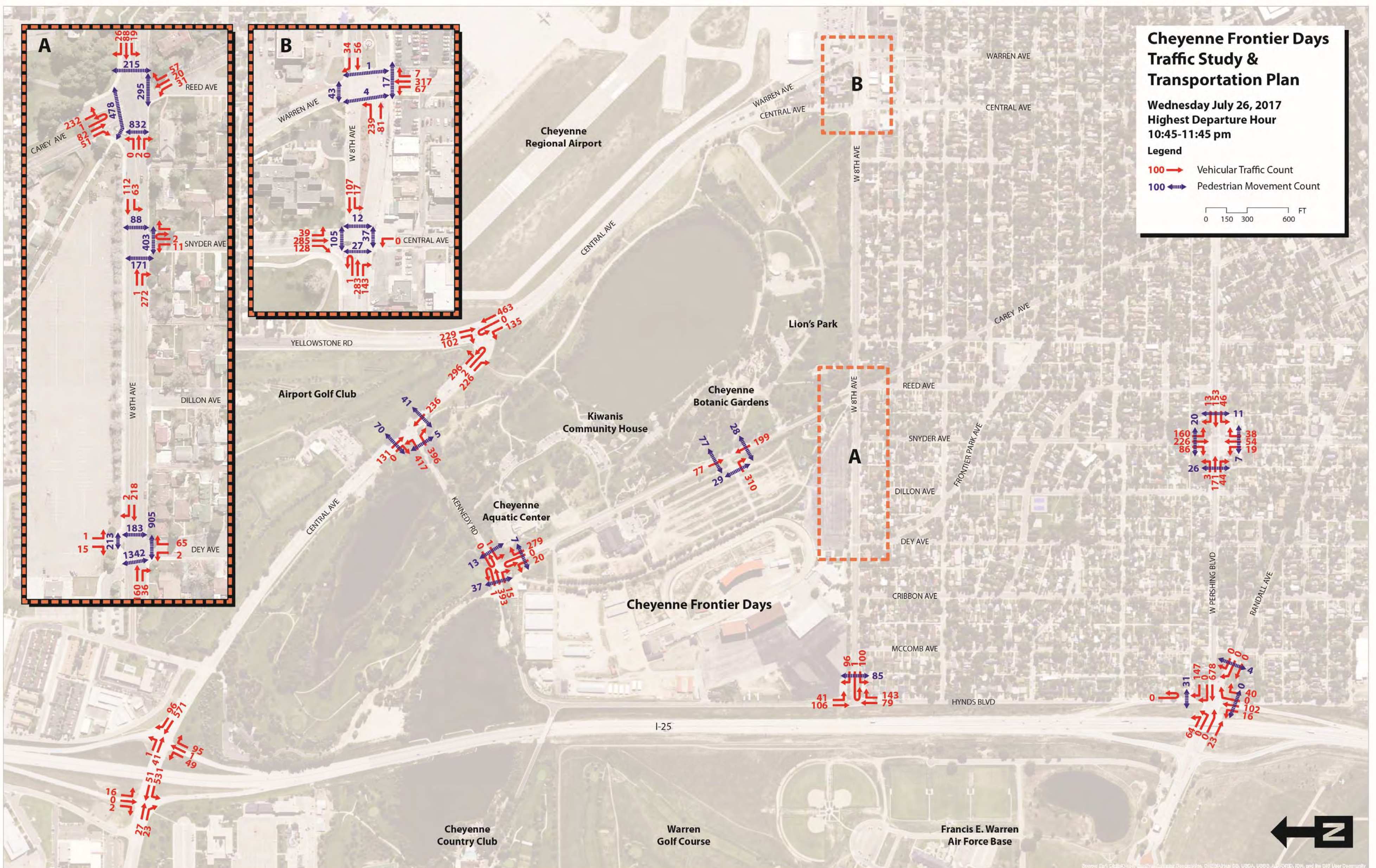


\* Park N Ride estimate is based on the assumption of 3 passengers per vehicle in the Bull Lot for each vehicle entering the Bull Lot after 3:00 p.m. on Saturday. Vehicles parked prior to 3:00 p.m. are not included in this count of 2,364.

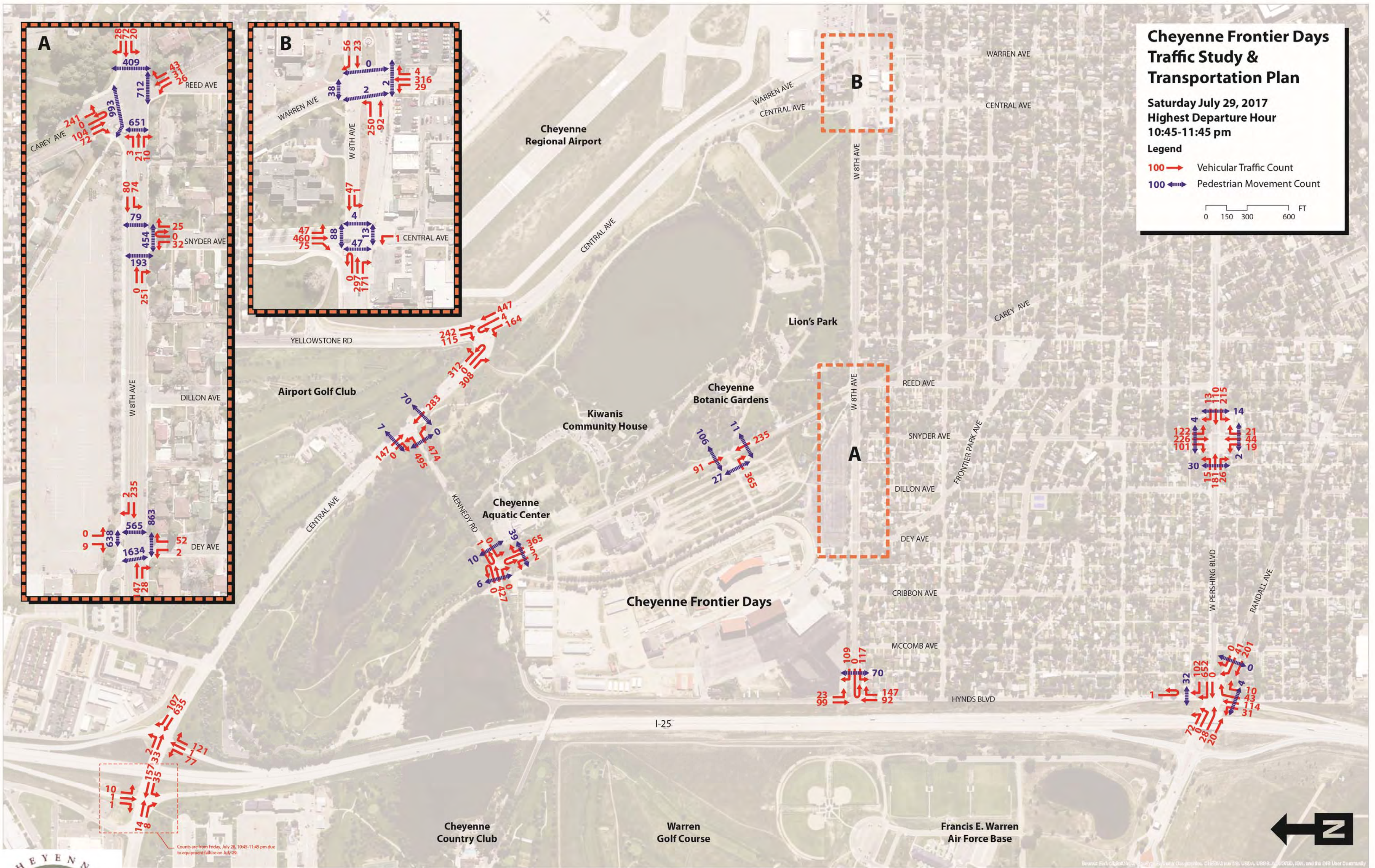


# TRAFFIC & PEDESTRIAN INTERSECTION MOVEMENTS

Wednesday, July 26, 2017 (10:45—11:45 pm)



Saturday, July 29, 2017 (10:45—11:45 pm)



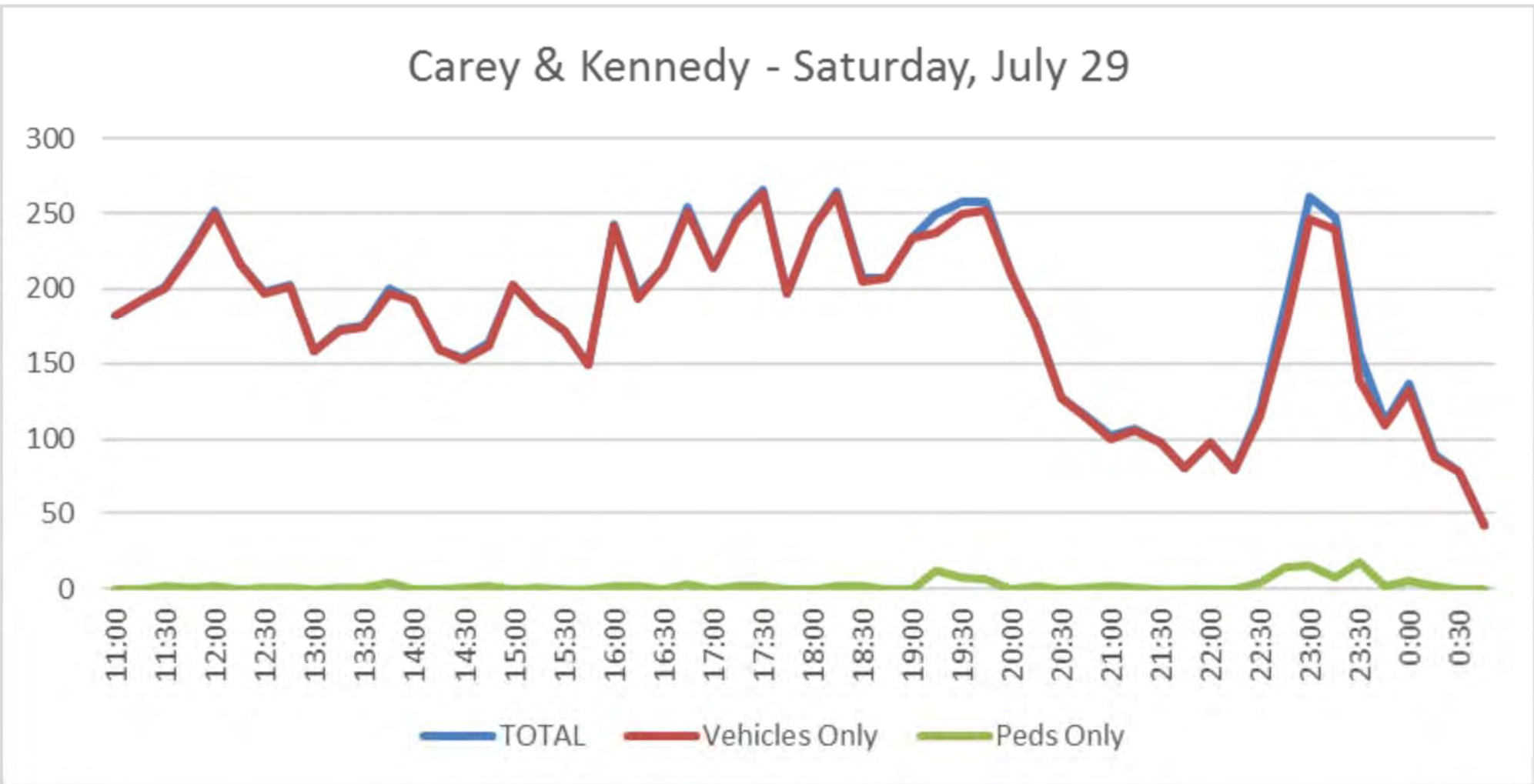
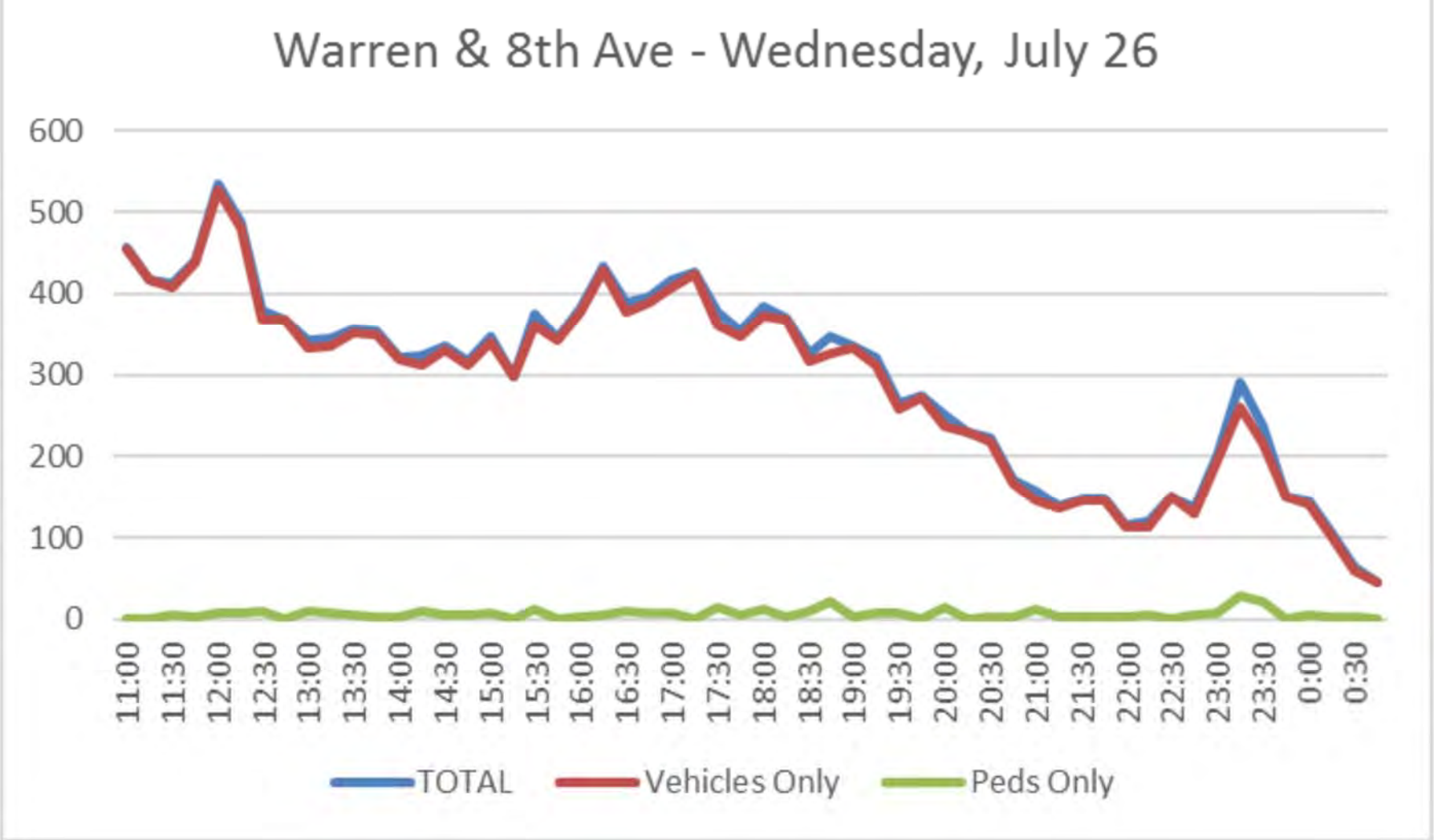
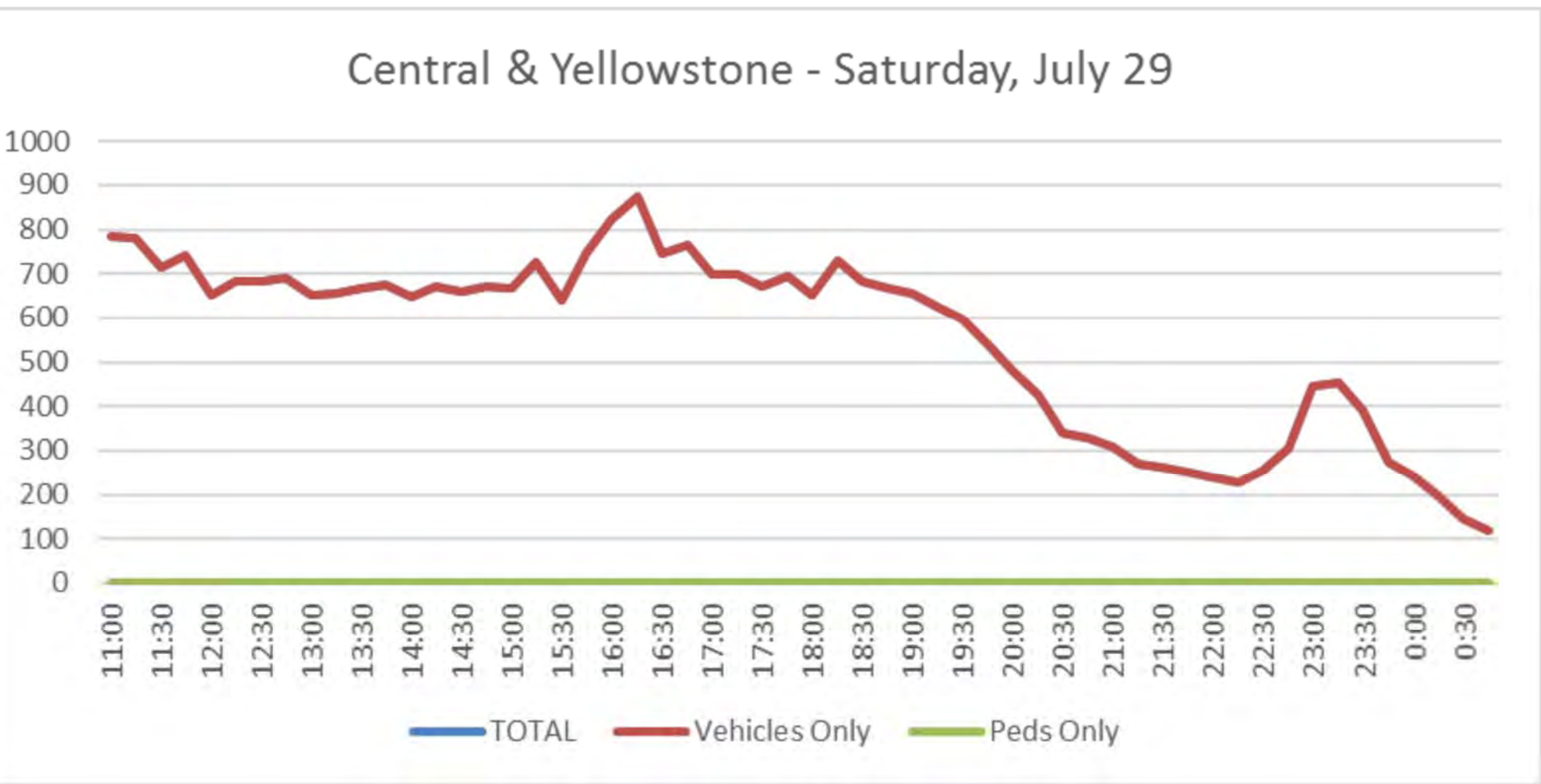
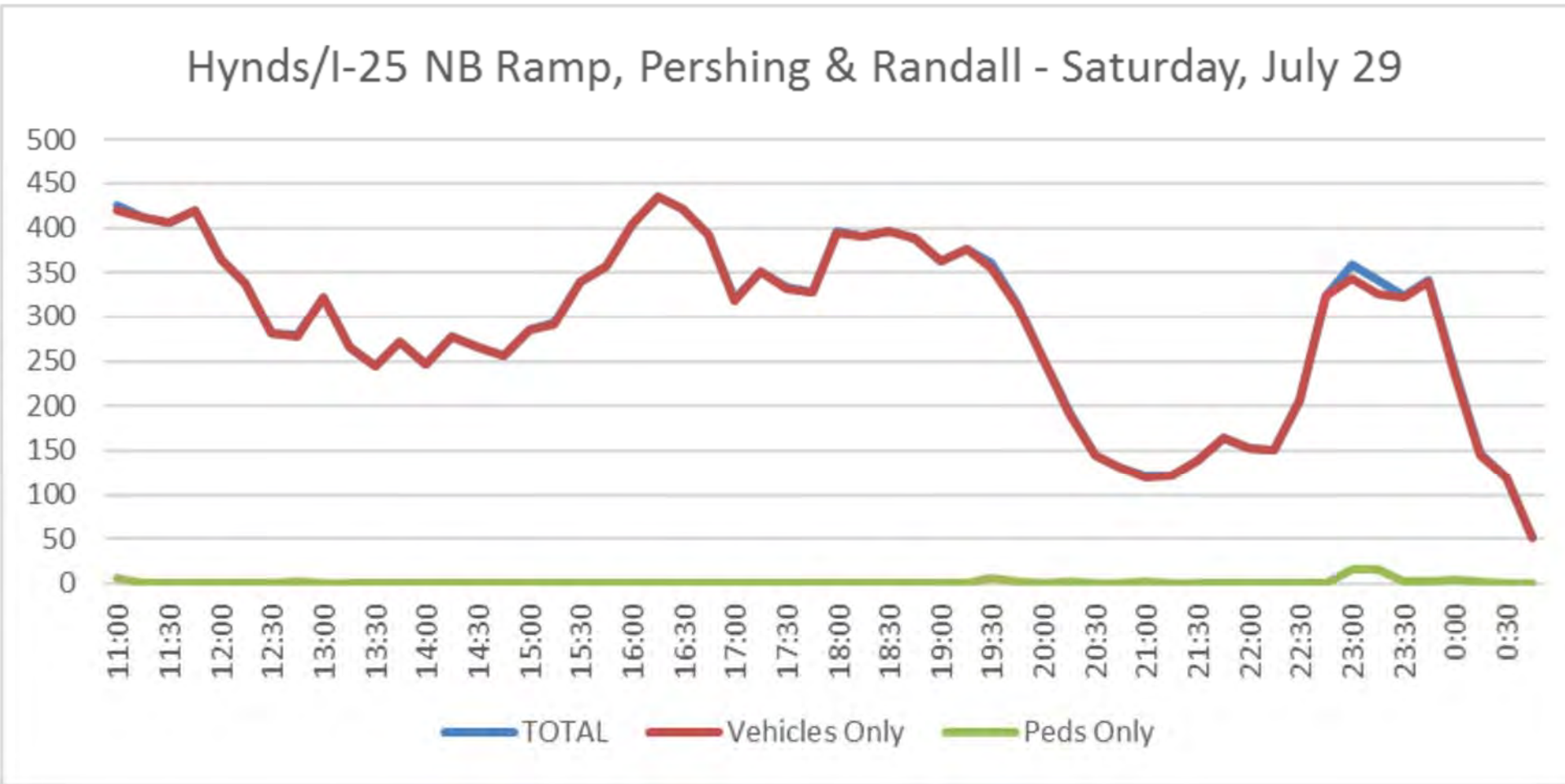
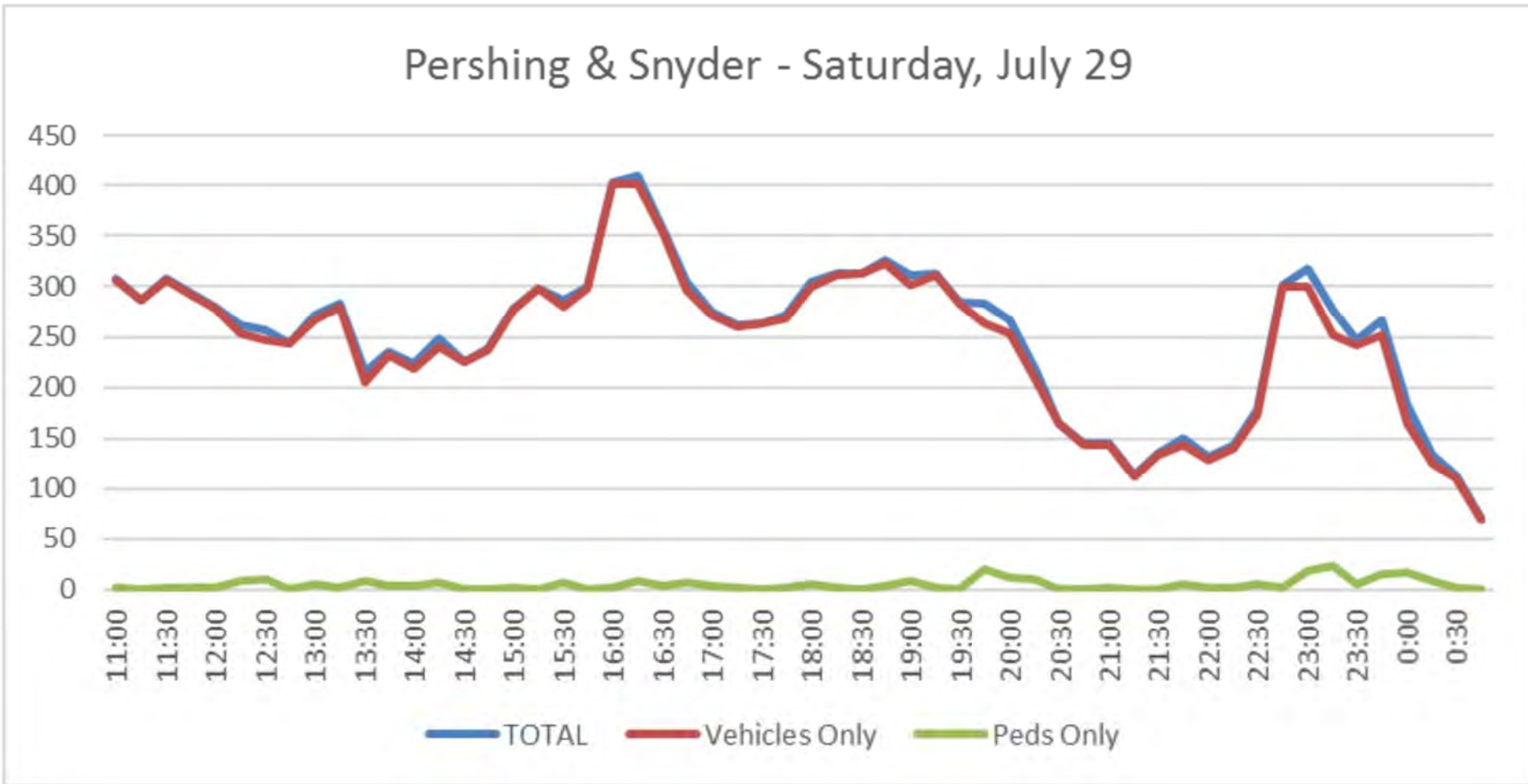
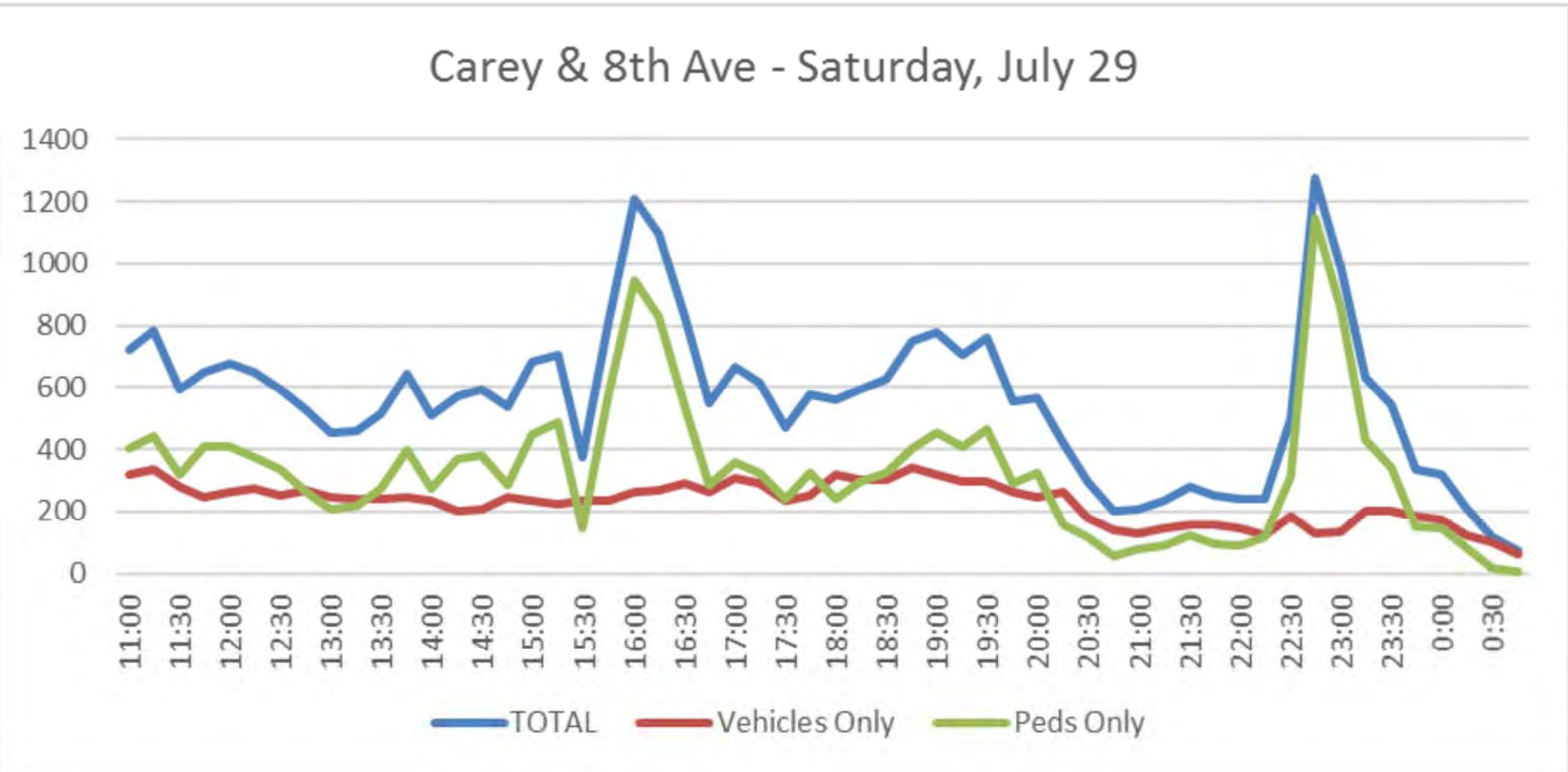
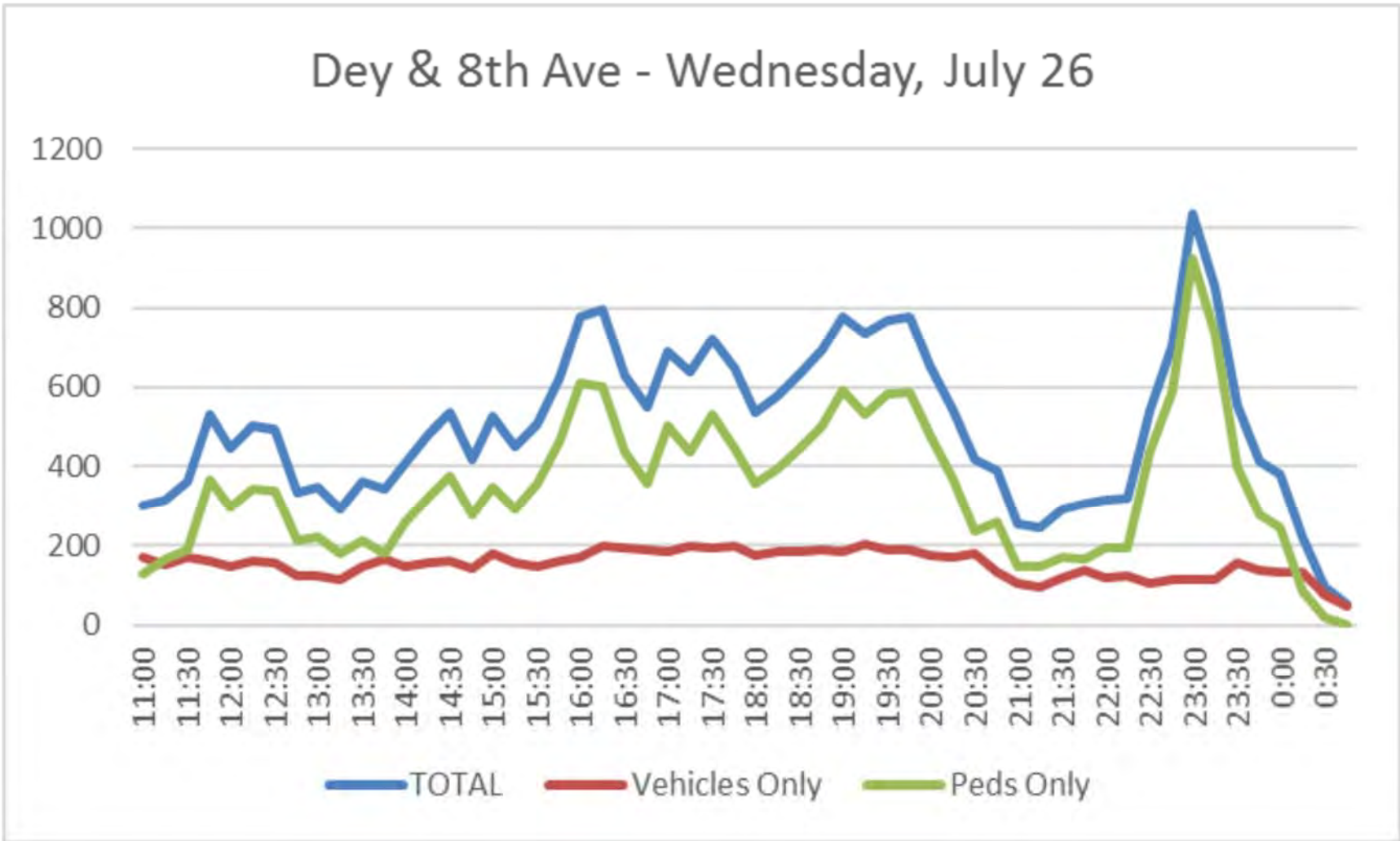
# CHEYENNE FRONTIER DAYS TRAFFIC STUDY & TRANSPORTATION PLAN

**AYRES**  
**ASSOCIATES**



# 2017 HOURLY TRAFFIC AND PEDESTRIAN INTERSECTION

## VOLUME PATTERNS: 10:45 AM TO 11:45 PM



### DID YOU KNOW?

- During CFD the intersection of Carey Ave. and 8th Ave. handles 671 vehicles and 2,765 pedestrians during the peak hour.
- On a typical weekday without CFD the intersection of Carey Ave. and 8th Ave. handles 595 vehicles and 7 pedestrians during the peak hour.

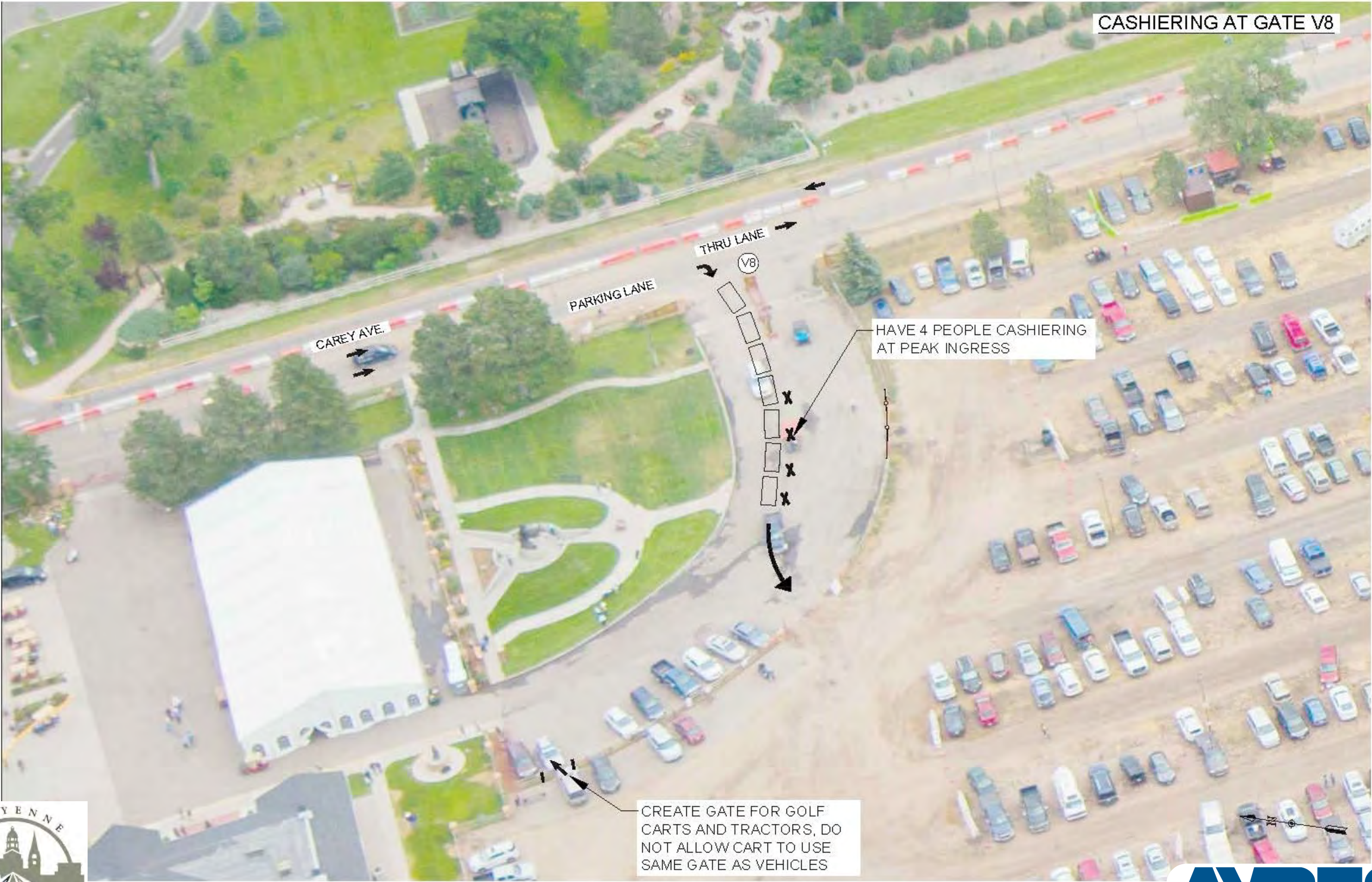




# PUBLIC PARKING AVAILABILITY NEAR FRONTIER PARK



## GATE V8 OPERATIONS RECOMMENDATION





## KEY SHORT-TERM RECOMMENDATIONS

- a) Temporarily close the segment of 8<sup>th</sup> Avenue to westbound traffic between Dey Avenue and Hynds Boulevard. 8<sup>th</sup> Avenue will remain open for a single lane of eastbound traffic.
- b) Relocate 'Park N Ride' passenger loading / unloading area. Short-term recommendation is to move this area west of its current location along 8<sup>th</sup> Avenue and to create a wider sidewalk and space for passenger boarding as patrons approach to board buses.
- c) 'Park N Ride' buses leave Frontier Park by travelling north on Hynds Boulevard to Kennedy Road and Central Avenue to access Interstate-25 at the Central Avenue interchange.
- d) Hynds Boulevard should be converted permanently to a one-way northbound street between Pershing Boulevard and 8<sup>th</sup> Avenue. During CFD, the segment of Hynds Boulevard should be temporarily operated as one-way northbound from 8<sup>th</sup> Street to Gate V12 with temporarily signing on Kennedy Avenue that states 'Access Restricted to Golf Club and CFD Participants at Gate V12'.
- e) Install portable temporary traffic signals, with pedestrian indication signal heads, at the 8<sup>th</sup> Avenue intersection with Carey Avenue and the Kennedy Road intersection with Central Avenue.
- f) Provide temporary street lighting, particularly at the intersections of 8<sup>th</sup> Avenue with Carey Avenue and with Dey Avenue.
- g) Allow Cheyenne Police Department officers to utilize the manual control traffic signal equipment at the Pershing Boulevard/Randall Avenue/Hynds Boulevard and the Pershing Boulevard/Snyder Avenue Intersections. (These signals are planned to be upgraded prior to the 2018 Cheyenne Frontier Days event; upgrades will allow for push-button officer control.)
- h) During Cheyenne Frontier Days increase the Interstate-25 northbound off-ramp green time at Pershing Boulevard during peak hours: 5:00 p.m. – 8:00 p.m. and 11:00 p.m. to 1:00 a.m.
- i) Reconfigure the 'Park N Ride' Bull Lot operation so that pedestrians do not have to walk in front of buses. Provide a dedicated pathway area for pedestrians as they approach and leave the bus pick-up/drop-off area.
- j) Conduct annual CFD kick-off and debriefing meetings with City of Cheyenne Traffic Engineering, Cheyenne Police Department, Cheyenne Frontier Days staff/volunteers, Wyoming Department of Transportation, Cheyenne Transit Program, and Laramie County School District Number 1 transit representatives.
- k) Create a full-time staffed Traffic Control Communications Center within Frontier Park for communications of real time traffic/pedestrian control and parking availability information to Cheyenne Police Department, Cheyenne Frontier Days, City Engineering and Traffic, Wyoming Department of Transportation and Cheyenne Transit Programs.
  - l) *Utilize the Traffic Control Communications Center to ensure that updates to dynamic message signs are made accurately and timely.*
  - m) *Utilize the Traffic Control Communications Center to ensure that traffic controls which change throughout the day to accommodate ingress and egress traffic is in place and removed consistently and according to plan each day of the event.*
- n) Utilize the Cheyenne Frontier Day smart phone app for traffic conditions and control updates to provide alerts to CFD patrons. Add a parking option and/or 'Park N Ride'/Cowboy Triangle Maps to the 'Maps' tab on the app.
- o) Close Randall Avenue to westbound traffic between Pershing Boulevard and McComb Avenue during CFD to improve Pershing Boulevard peak traffic operation.

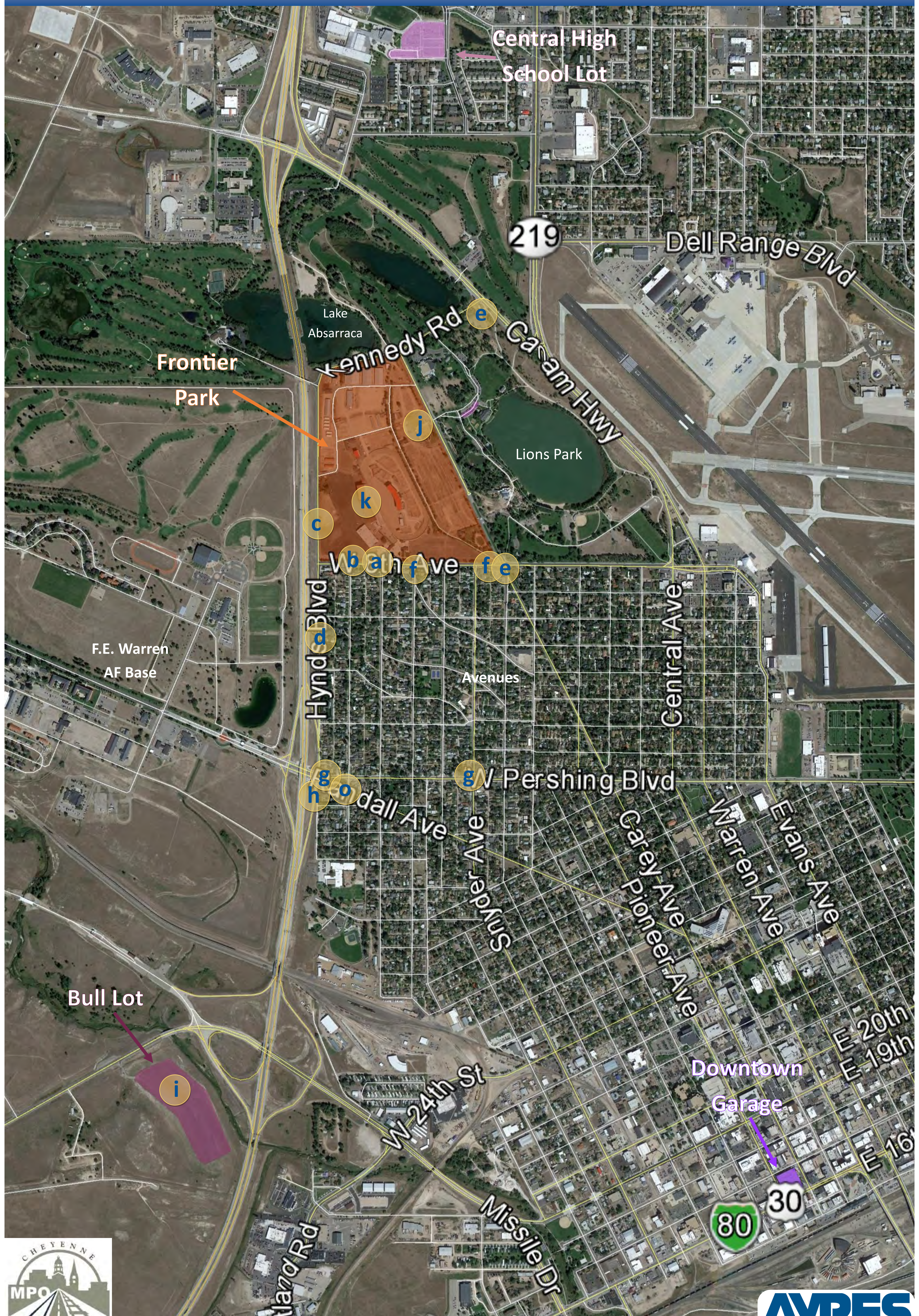
## KEY LONG-TERM RECOMMENDATIONS

1. Construct a permanent relocated 'Park N Ride' bus passenger drop-off/pick-up area accessed from Hynds Boulevard that involves relocation of the Buckin' A Saloon tent within Frontier Park and an enhanced bus access road between the carnival area and carnival parking lot that allows buses to exit Frontier Park via Gate V12 to proceed north on Hynds Boulevard. (This is a change from the CFD Master Plan).
2. Widen Kennedy Road to maintain a westbound Frontier Park access lane for emergency responders and accommodate an eastbound 'Park and Ride' bus express lane.
3. Upgrade and/or install LED street lighting around Frontier Park, particularly along 8<sup>th</sup> Avenue, Carey Avenue and Hynds Boulevard.
4. Identify and pave a permanent 'Park N Ride' lot to replace the Bull Lot. Stripe the parking spaces and internal circulation system in this lot to maximize parking efficiency.





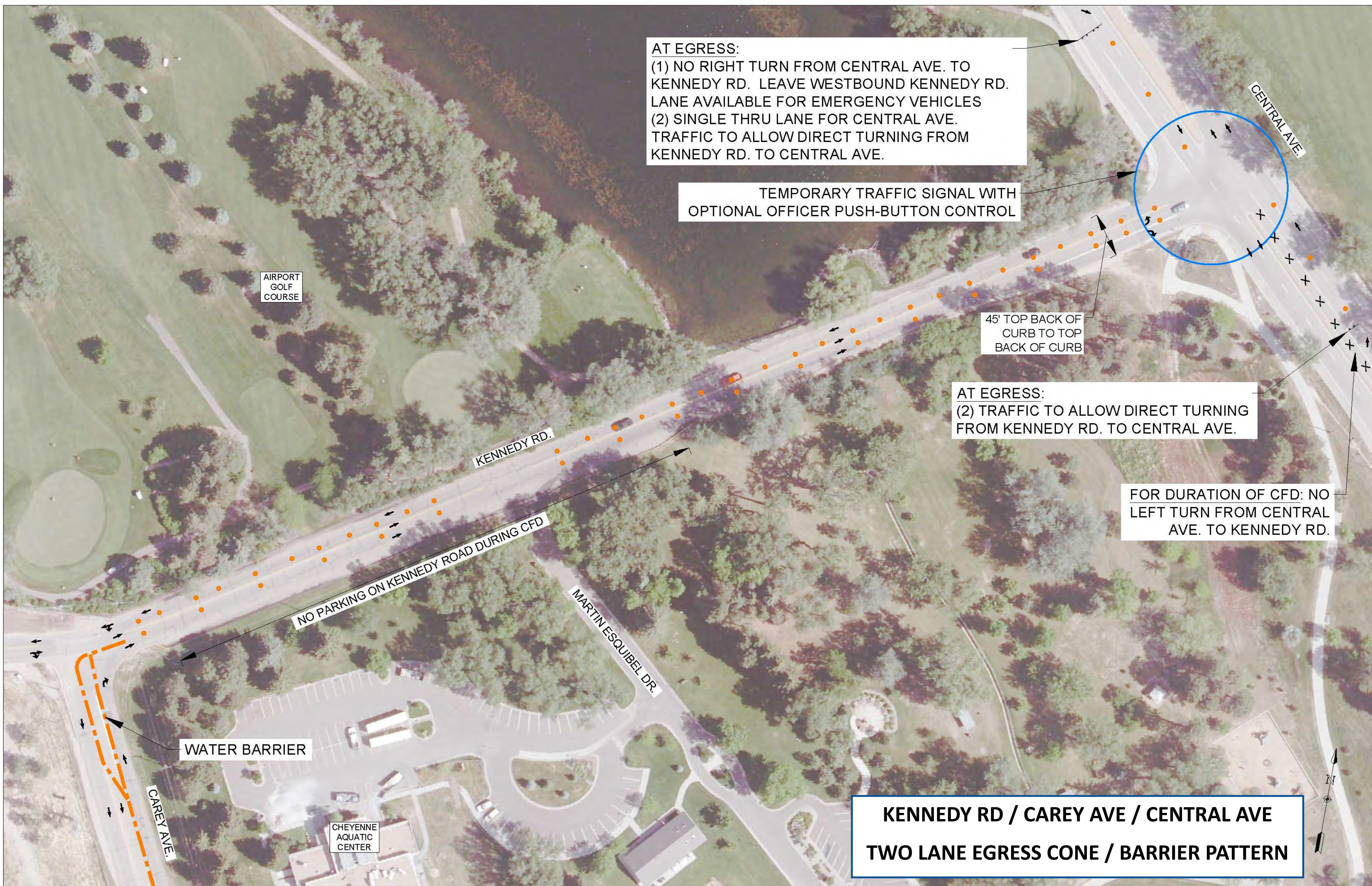
## SHORT AND LONG TERM RECOMMENDATIONS MAP



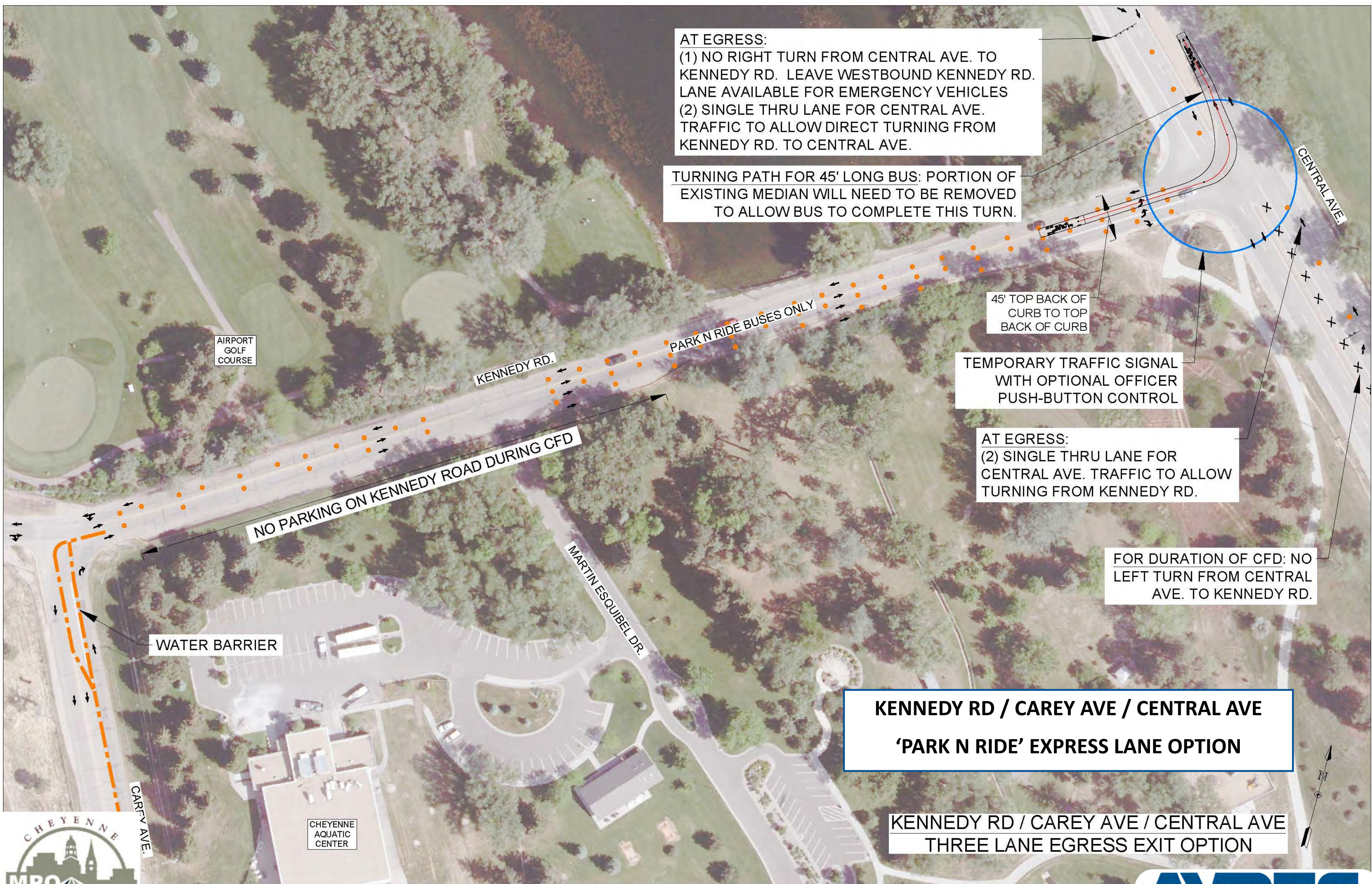


# KENNEDY RD. / CAREY AVE. / CENTRAL AVE.

## SHORT-TERM IMPROVEMENT RECOMMENDATIONS



## LONG-TERM IMPROVEMENT RECOMMENDATIONS

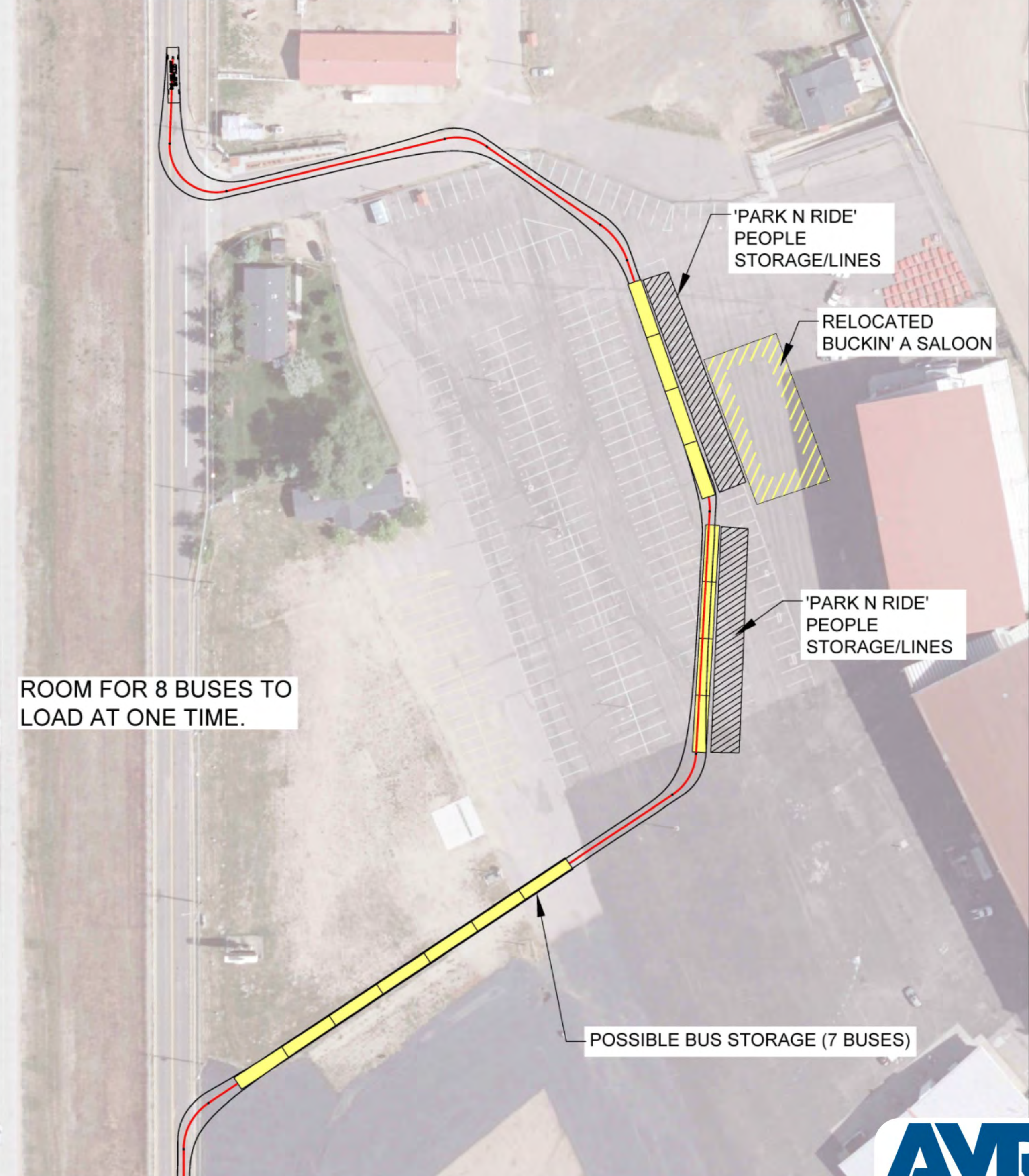




# LONG-TERM 'PARK N RIDE' RECOMMENDATION



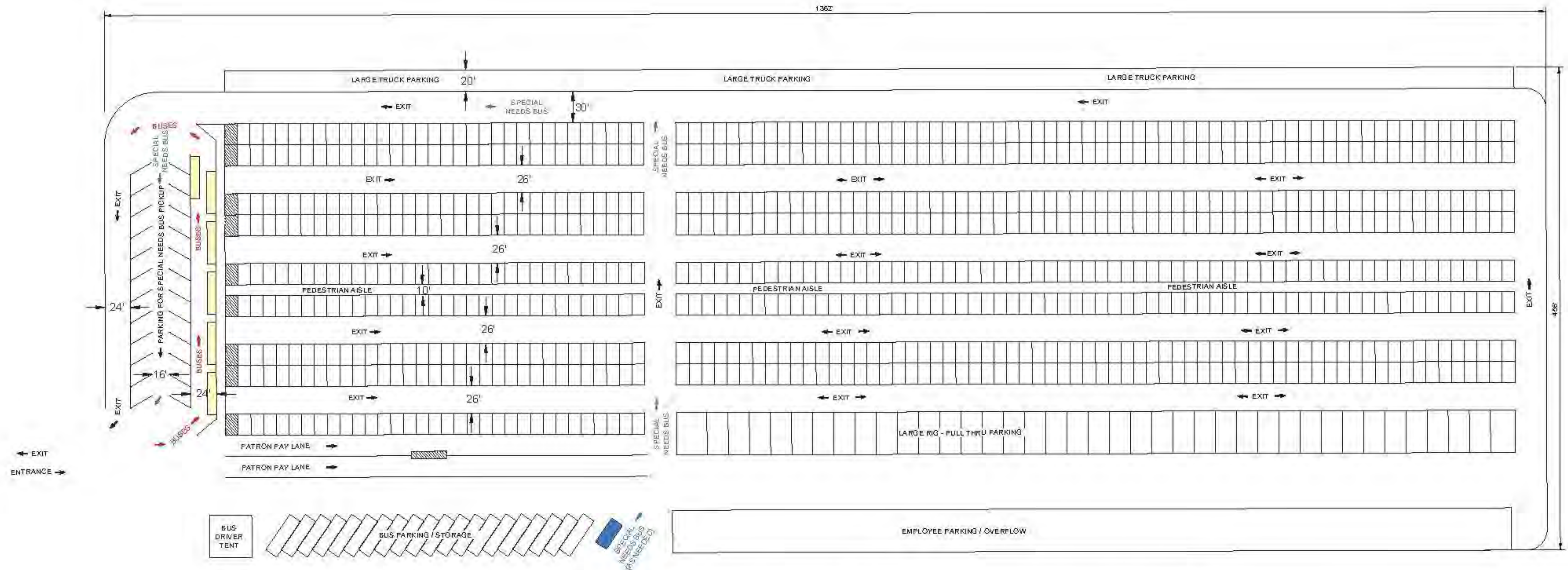
RECOMMENDED 'PARK N RIDE' LOCATION:  
NOTE: IMAGE ON THE RIGHT IS ACCURATE FOR DIMENSIONS/SIZE.  
BECAUSE THE AERIAL PHOTOGRAPH IS TAKEN AT A SKEW AND NOT  
LOOKING DIRECTLY DOWN ON THE LOT, THE FOOTPRINT OF THE  
IMPACTS ARE ALSO SLIGHTLY SKEWED IN THAT IMAGE.





# BULL LOT RECONFIGURATION RECOMMENDATION

'PARK N RIDE' BULL LOT RECOMMENDED LAYOUT



## LOT ACCOMMODATES:

- 22 LARGE HANDICAP PARKING SPACES FOR SPECIAL NEEDS BUS PICK UP
- 39 LARGE RIG / PULL-THRU PARKING SPACES
- 824 STANDARD PARKING SPACES (DRAWN AT 20'x12' TO ACCOUNT FOR NO STRIPING/FILL IN PARKING LAYOUT)
- LARGE TRUCK PARKING IS 1220' LONG, LIKELY PROVIDE PARKING FOR 60-70 TRUCKS.

## BENEFITS:

- PROVIDES A PEDESTRIAN AISLE TO PROVIDE SEPARATE SPACE FOR PEDESTRIANS AWAY FROM VEHICLES AS THEY WALK TO/FROM BUSES.
- PATRONS LOAD AND EXIT BUSES SUCH THAT THEY ARE NOT WALKING IN FRONT OF BUSES TO LOAD OR UNLOAD.
- PROVIDES 2 LANES FOR VEHICLES TO PAY CASHIER DURING HEAVY INGRESS TIMES.

## SPECIAL NEEDS:

- PATRONS NOTIFY CASHEIR OF NEED FOR SPECIAL NEEDS BUS. CASHEIR DIRECTS VEHICLE TO SPECIAL NEEDS PARKING AREA.
- SPECIAL NEEDS BUS COMES DIRECTLY TO SPECIAL NEEDS PARKING AREA TO PICK UP PATRONS

## OPERATIONAL CONSIDERATION:

- BUS LOOP EXIT REQUIRES AN ATTENDANT TO STOP VEHICLE TRAFFIC TO ALLOW BUSES TO TURN OUT OF LOOP TO EXIT LOT.
- WHEN LOT CLOSEST TO DESIGNATED BUS LOADING AREA IS PARKED FULL, BUSES COULD MOVE TO NEXT AISLE AREA FOR LOADING TO REDUCE NEED FOR PATRONS TO WALK SO FAR TO LOAD BUSES.
- ALL BUSES SHALL UNLOAD AT DESIGNATED AREA SO PATRONS ARE NOT WALKING IN FRONT OF BUSES TO RETURN TO THEIR VEHICLES.





# CFD MASTER PLAN

