



VAN BUREN CORRIDOR PLAN PUBLIC MEETING #1



DEFINE.

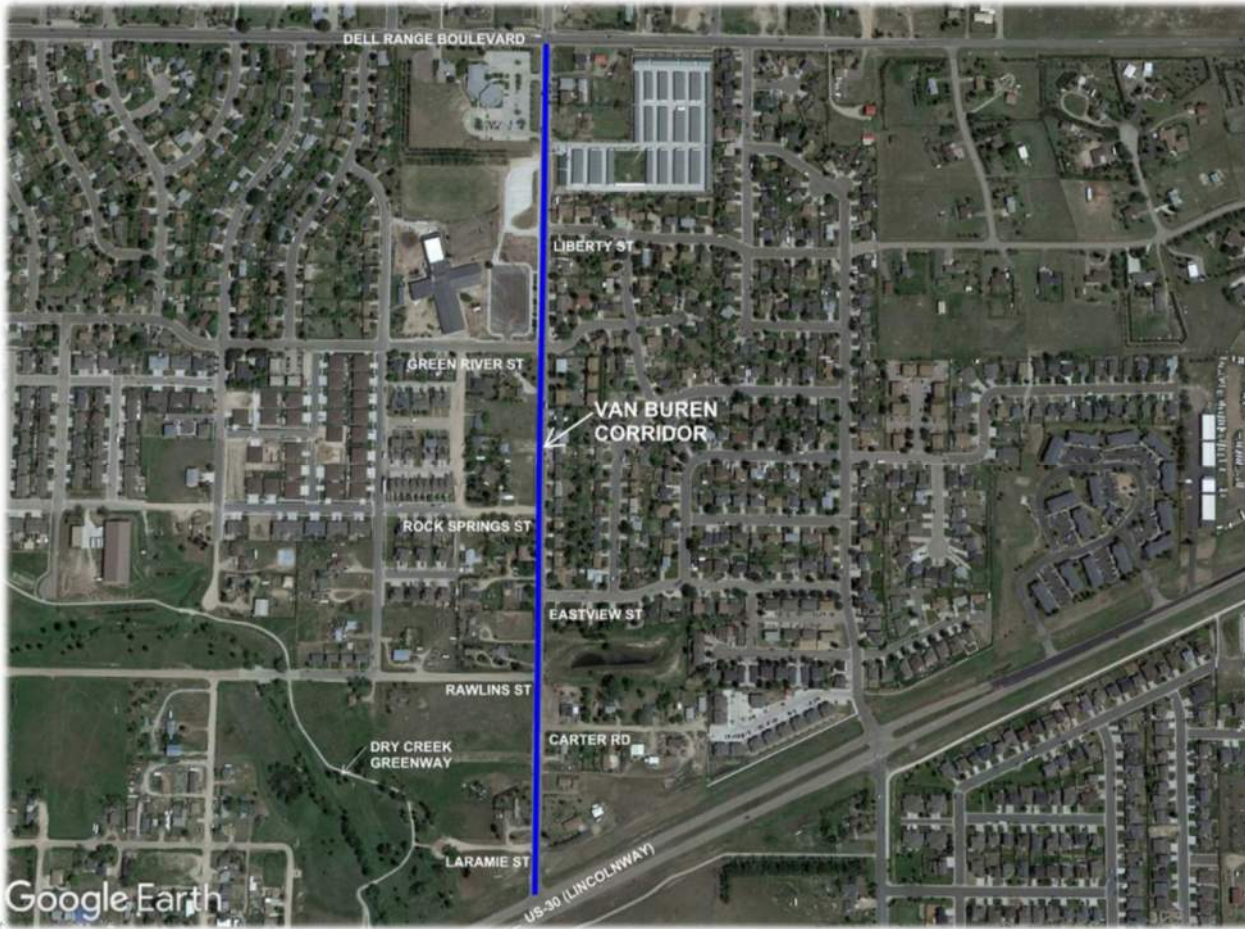


DESIGN.



DELIVER.

VAN BUREN CORRIDOR STUDY AREA



Project Goals

- ⊗ Safety
- ⊗ Accommodate All Modes of Travel
- ⊗ Reduce Speeds
- ⊗ Ease of Maintenance
- ⊗ Cost Effective
- ⊗ Aesthetically Pleasing



VAN BUREN CORRIDOR PLAN

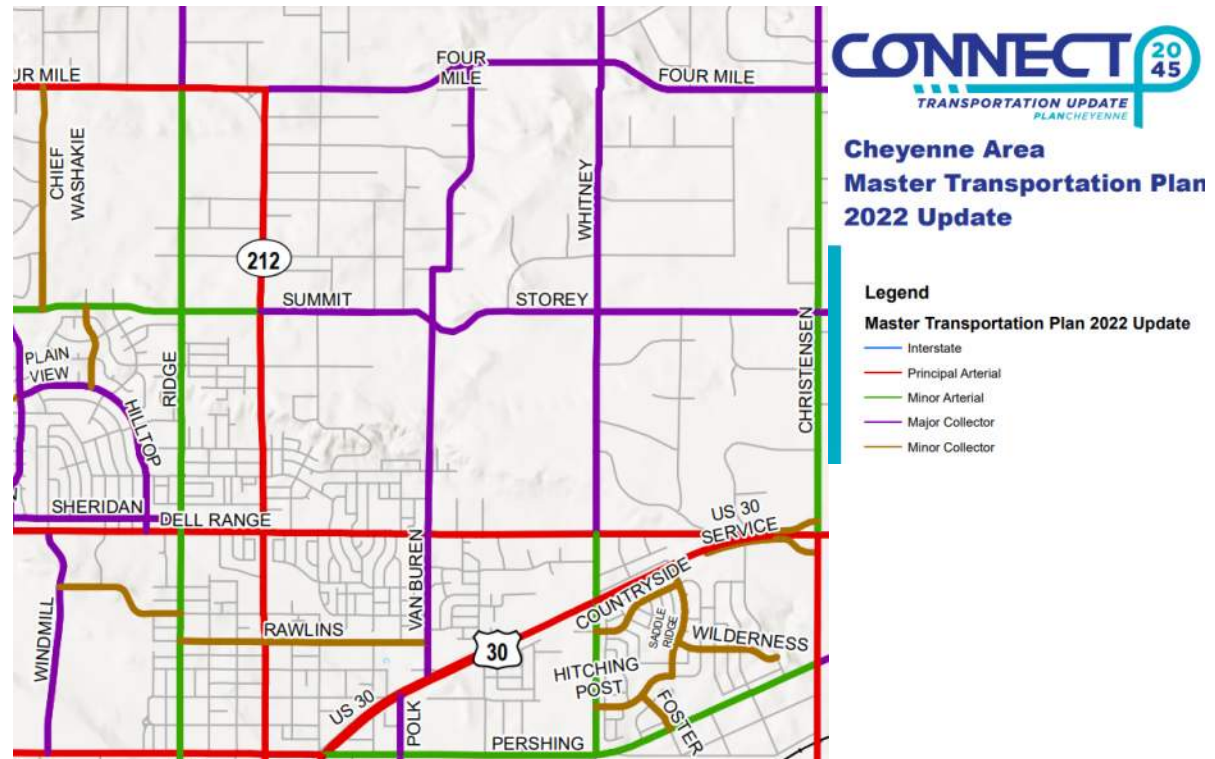


CONSULTANTS

VAN BUREN CORRIDOR STUDY DRIVERS

Development and Growth

- ❑ Whitney Ranch Development
- ❑ Extend Van Buren North to 4 Mile Rd
- ❑ US-30 Reconstruction
- ❑ Dell Range to be Widened to 5 Lanes



VAN BUREN TRAFFIC PREDICTIONS

TRAFFIC VOLUME

- ⊗ It's only going to increase...
- ⊗ Highly driven from the development to the north
- ⊗ Increase of 1,100 to 2,200 vehicles per day along the corridor

2019 and 2045 MPO Traffic Model Volumes



TRAFFIC – CAN BE REDUCED PERTAINING TO THE SCHOOL

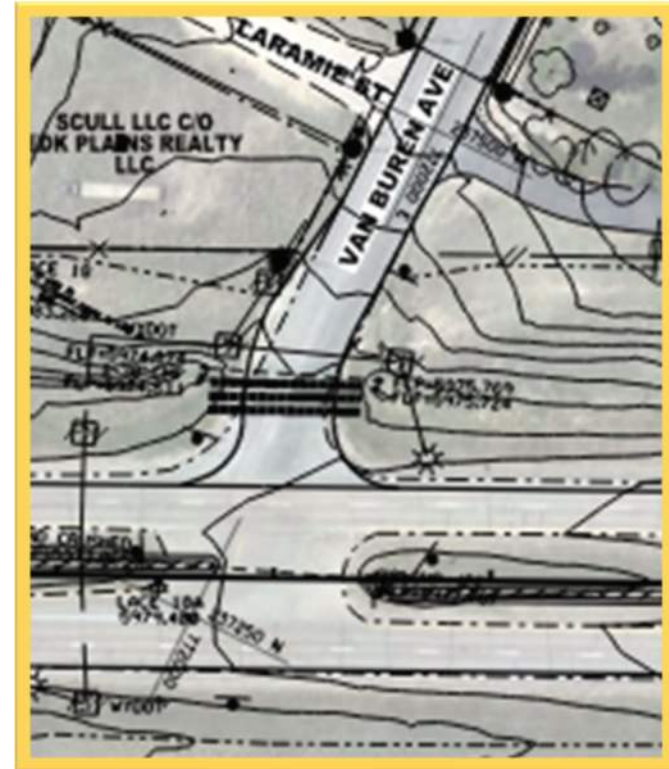
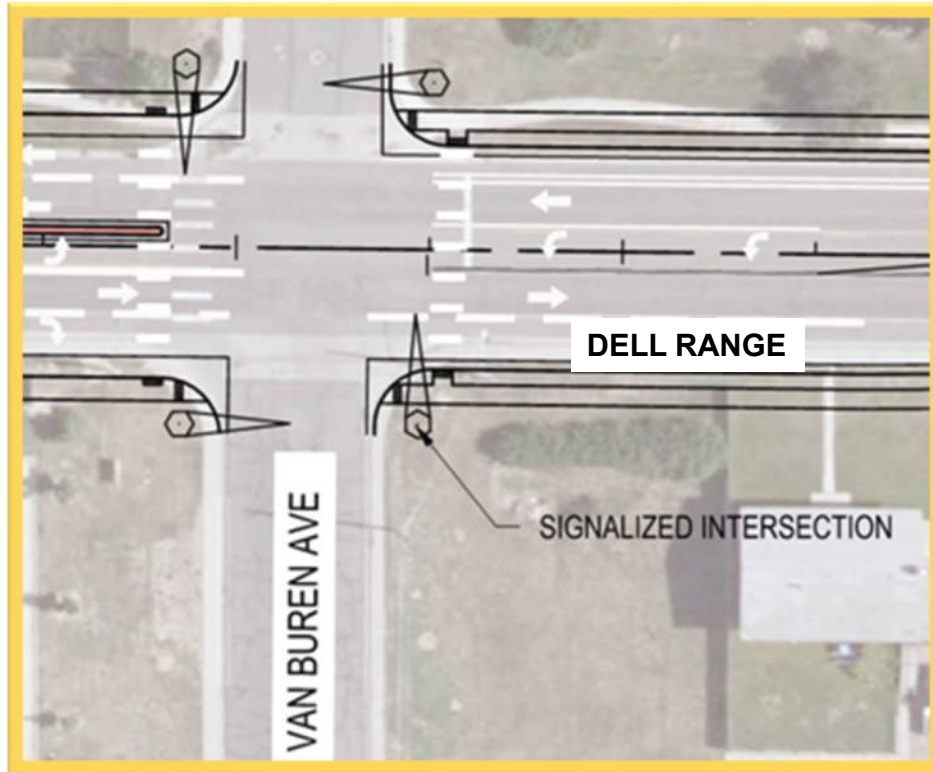


By having students ride the school bus, we decrease:

- ❑ **Number of vehicles, miles, gallons of fuel, CO₂ emissions**
- ❑ **Students are about 70 times more likely to get to school safely if they take the school bus instead of traveling by car**
- ❑ **Bus drivers have extensive driving, safety, and emergency response training**




NORTH AND SOUTH CORRIDOR TIE-INS



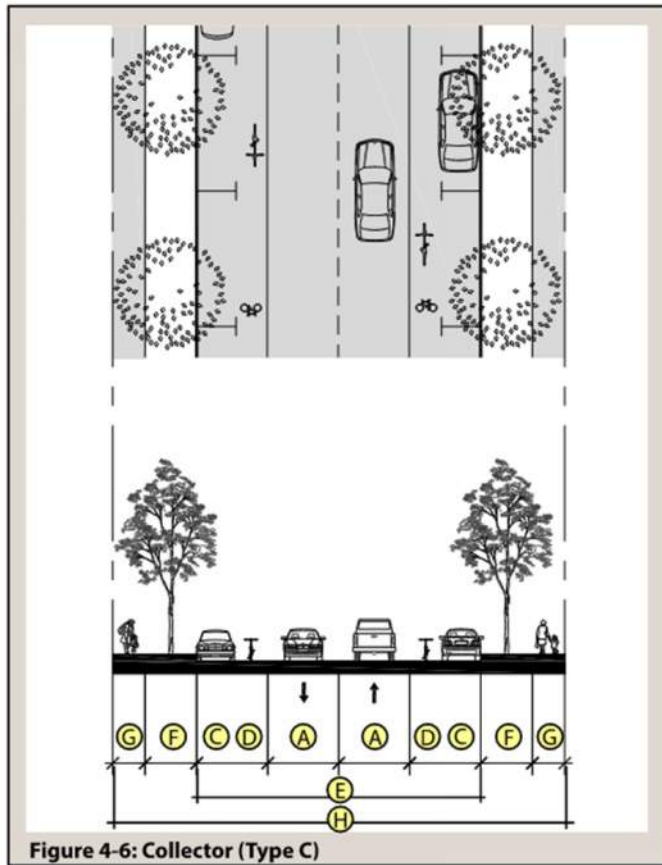
RIGHT OF WAY AND COUNTY POCKETS



 County Pocket



UDC COLLECTOR TYPICAL SECTIONS



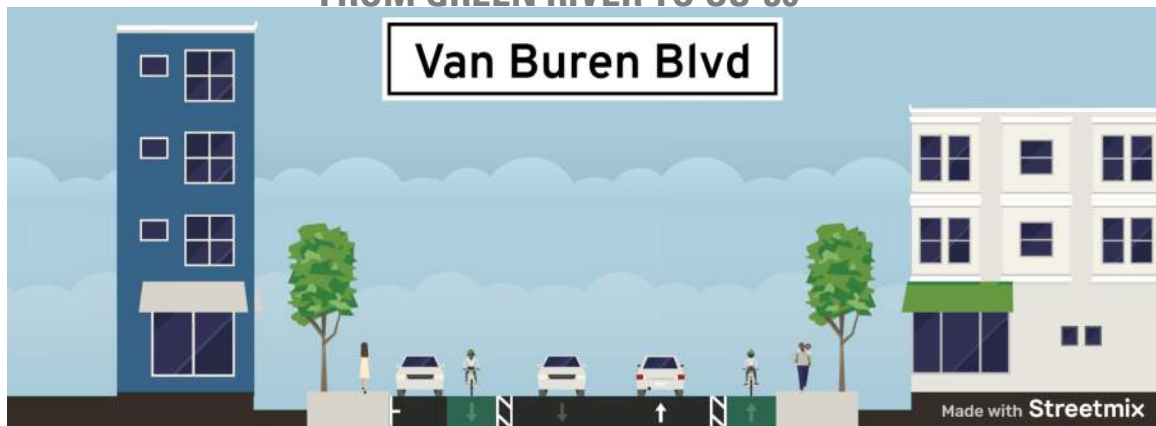
GEOMETRIC AND URBAN DESIGN STANDARDS				
		Collector A (w/o parking)	Collector B (w/o parking; w/ center turn-lane)	Collector C (w/ parking)
(A)	Number of Lanes (Width)	2 (12')	2 (12')	2 (11')
(B)	Median Type (Width)	none	Painted (12')	none
(C)	Parking	none	none	Shared w/ bike lane
(D)	Bicycle Lane / Shoulder	6'	6'	11' joint parking/bike lane
(E)	Roadway Width (BC-BC)	36' minimum	48' minimum	44' minimum
(F)	Tree Lawn / Landscape	8'	8'	8'
(G)	Pedestrian Area**	6'	6'	5'
(H)	Right-of-Way Width*	70'	80'	70'

UDC COLLECTOR TYPICAL SECTIONS

FROM DELL RANGE TO GREEN RIVER



FROM GREEN RIVER TO US-30



Current Speed Limit – 30 mph SPEEDING LOCATIONS



- ❑ **Need to deal with decreasing the speed now and in the future**
- ❑ **Significant Speeding at two locations along corridor**
 1. Green River Street: ~40 mph
 2. Rawlins Street: 42 mph
- ❑ **Coincide with locations of Bicycle Boulevards proposed along the corridor**

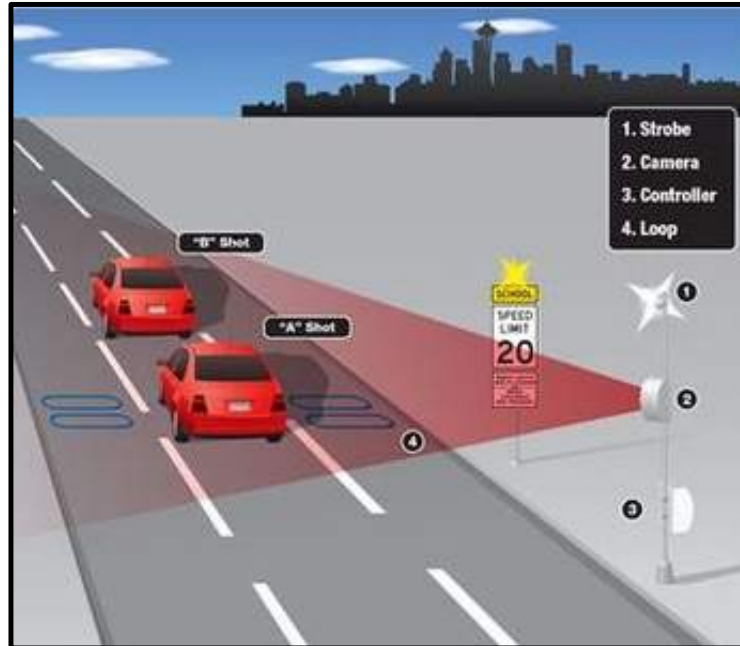


POTENTIAL SPEED SOLUTIONS – SHORT TERM

STRIPING



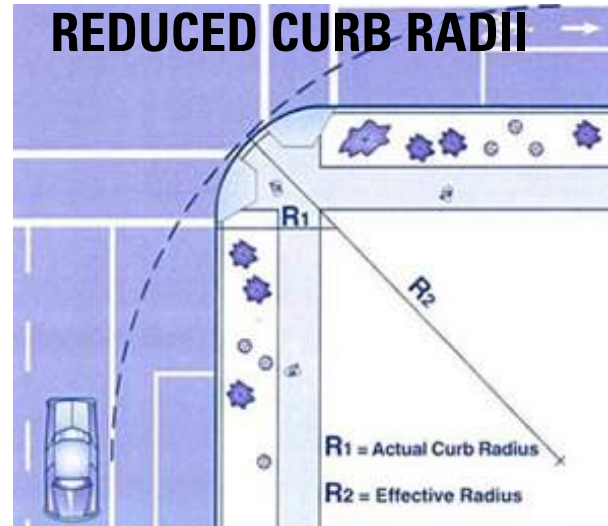
SPEED CAMERA ENFORCEMENT



SIGNAGE



POTENTIAL SPEED SOLUTIONS – MID TO LONG TERM



NON-MOTORIZED SOLUTIONS: SHORT TERM OPTIONS



NON-MOTORIZED SOLUTIONS: MID TO LONG TERM OPTIONS



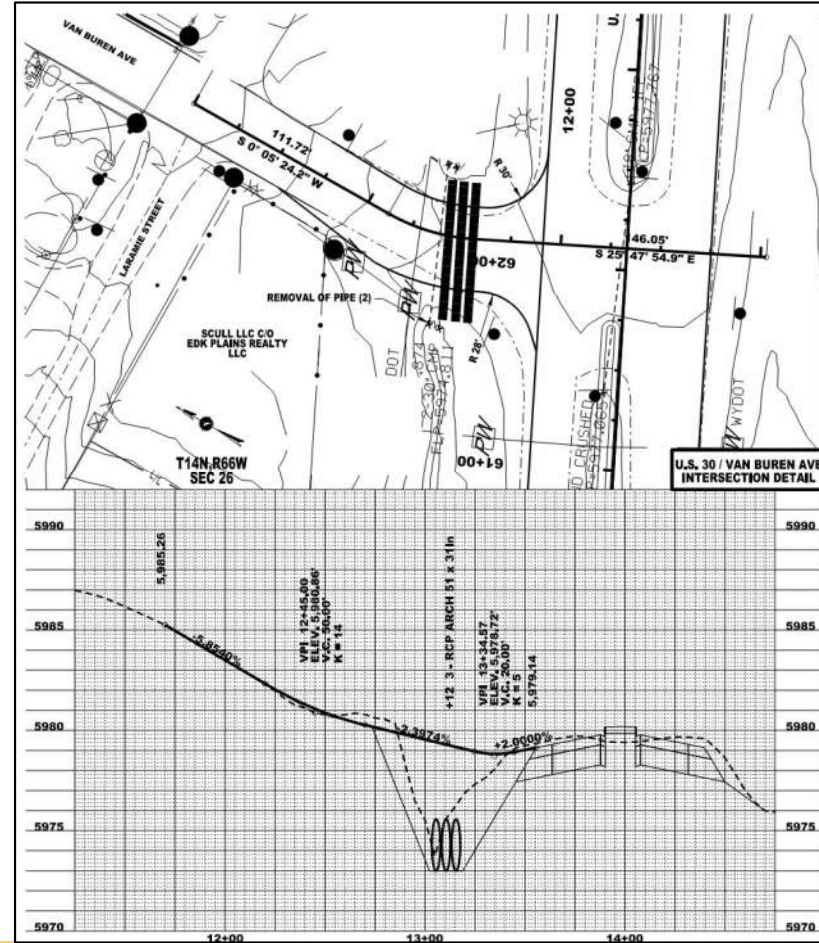
- ❑ Mini-Roundabout
- ❑ Multi-Use Pathways
- ❑ Additional and Widened Sidewalks



VAN BUREN CORRIDOR PLAN



DRAINAGE: LOTS OF WORK GOING ON IN THE AREA



VAN BUREN CORRIDOR PLAN



DRAINAGE: TWO MAJOR OPTIONS – SURFACE OR SUBSURFACE?

SURFACE DRAINAGE

- ⊗ Lower Cost
- ⊗ Roadway will be inundated during intense storms
- ⊗ Affects on non-motorized users

EXISTING DRAINAGE PAN



SUBSURFACE DRAINAGE

- ⊗ Higher Infrastructure Cost
- ⊗ Will reduce roadway inundation
- ⊗ Fits in line with other infrastructure
- ⊗ Vertical alignment improvement



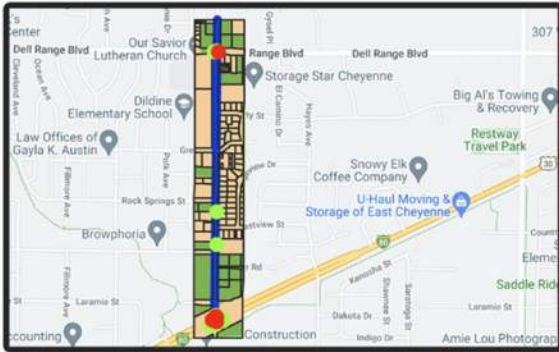
VAN BUREN CORRIDOR PLAN



CONSULTANTS

PROJECT WEBSITE – PLEASE COME CHECK IT OUT!!

<https://y2consultants.mysocialpinpoint.com/van-buren-avenue-corridor-plan>



Interactive map of the corridor

View map layers, comment on specific areas, and drop pins with your notes.

START 20 Dec 2022 END 31 May 2023

See Project Map



Use, concerns, improvements...

Fill out a survey to let us know how you use this corridor, and your ideas to improve it.

Take The Survey



Van Buren Corridor Forum

Interact with other stakeholders regarding the corridor plan.

START 20 Dec 2022 END 31 May 2023

Join The Discussion



VAN BUREN CORRIDOR PLAN



CONSULTANTS



QUESTIONS



DEFINE.



DESIGN.



DELIVER.