

VAN BUREN AVENUE CORRIDOR STUDY

PROJECT GOALS

Safety *Reduce speeds throughout the corridor while accommodating projected increased traffic. This is especially focused on higher speed areas from the corridor terrain mixed with higher pedestrian zones.*

Accommodate All Modes of Travel *Provide space and infrastructure for pedestrians and bicyclists to share the corridor safely with motor vehicles.*

Reduce Speeds *Implement solutions that reduce speed without impeding maintenance.*

Ease of Maintenance *Solutions shall not impede snow removal, street sweeping, trash removal services, or other maintenance operations.*

Cost Effective *Short-term and mid-term solutions to allow for near term implementation that doesn't require reconstruction. Long-term solutions that will create a lasting corridor that meets the needs of the neighborhood and travelers for years to come.*

Aesthetically Pleasing *Provide solutions that contribute to an enjoyable experience along the corridor.*

STUDY DRIVERS

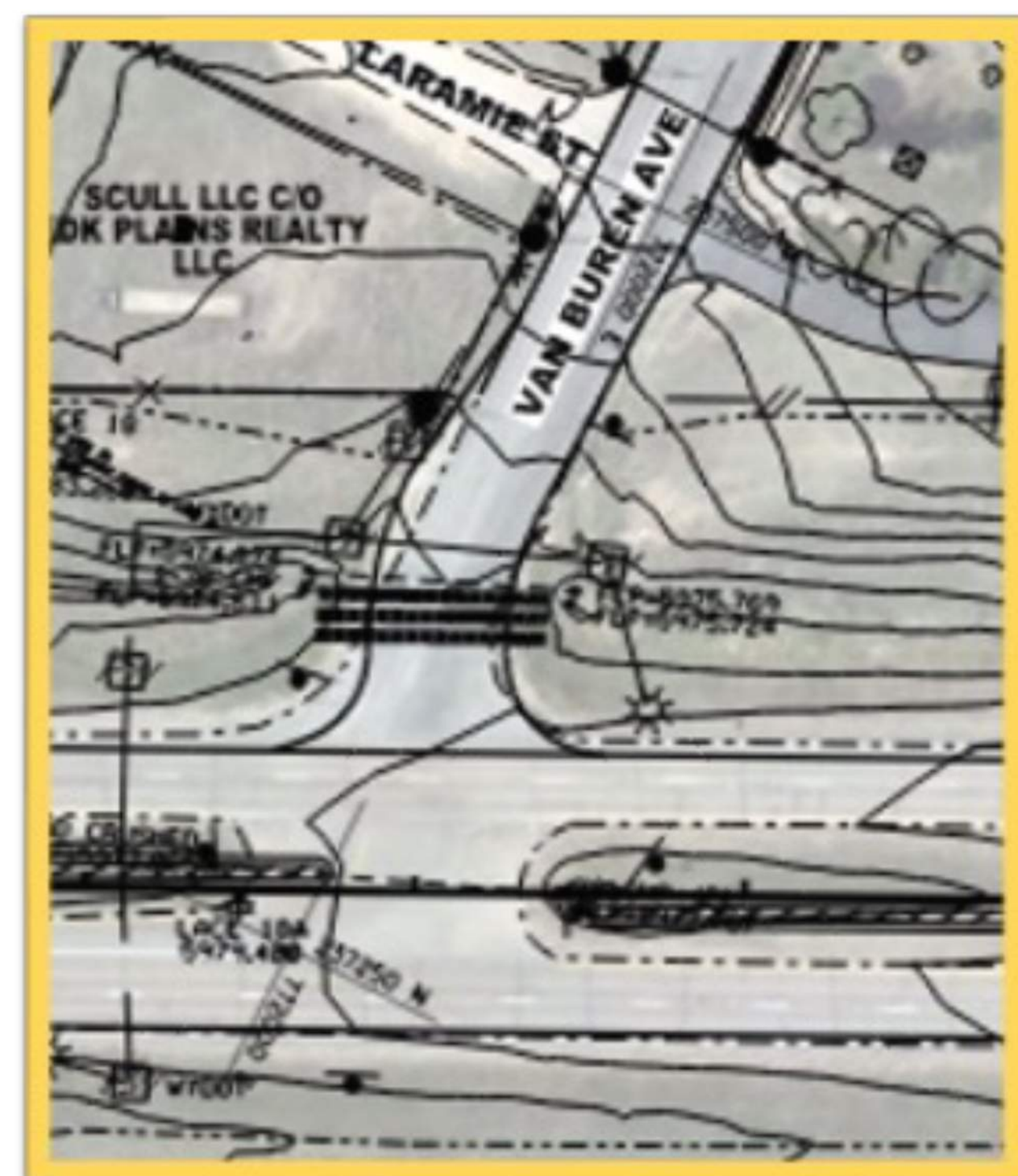
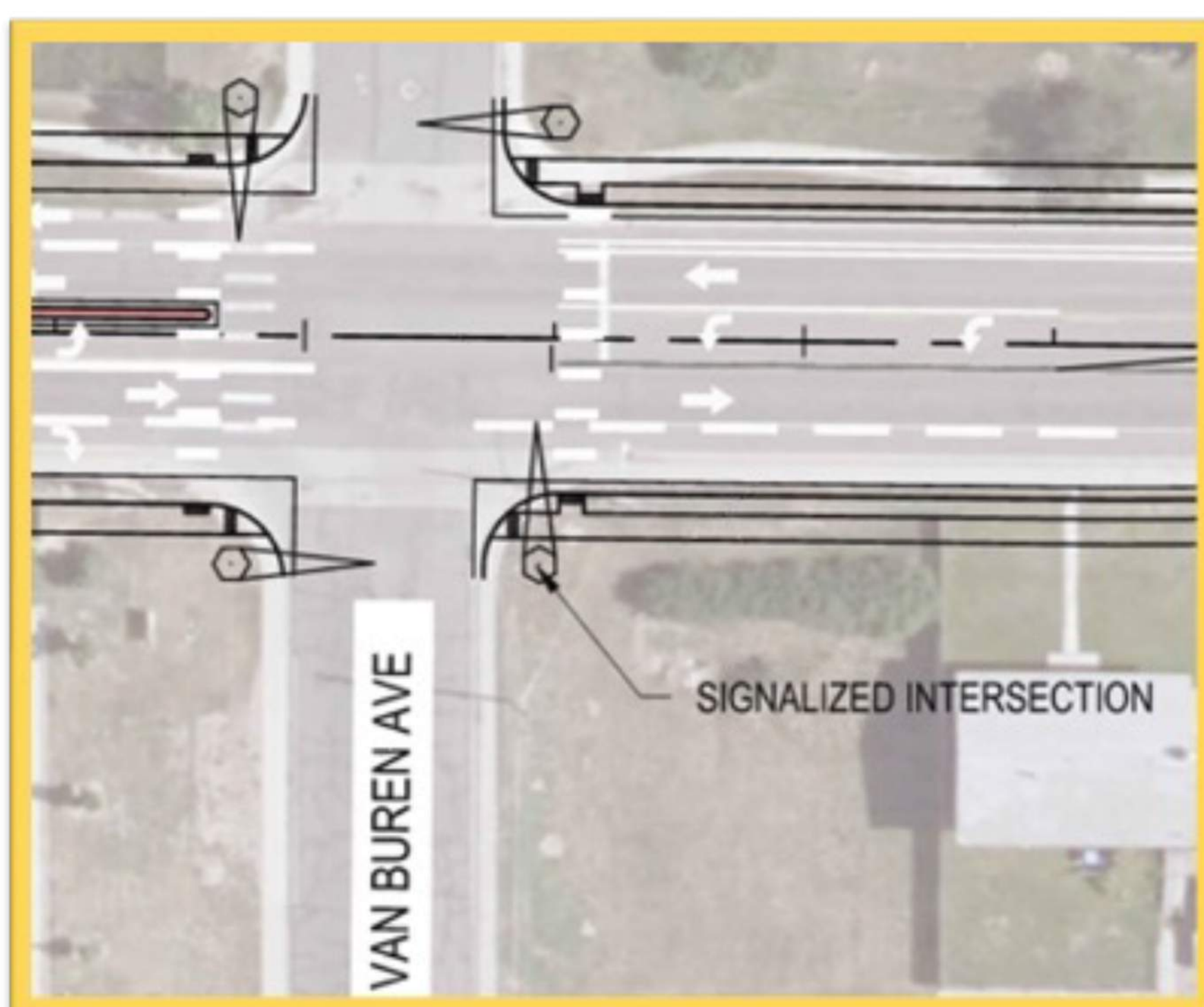
Development and Growth

- Whitney Ranch Development
- Extend Van Buren North to 4 Mile Rd
- US-30 Reconstruction
- Dell Range to be Widened to 5 Lanes

Traffic Volume

- It's only going to increase...
- Highly driven from the development to the north
- Increase of 1,100 to 2,200 vehicles per day along the corridor

North and South Corridor Tie-Ins



VAN BUREN AVENUE CORRIDOR STUDY

DRAINAGE OPTIONS

SUBSURFACE DRAINAGE



SURFACE DRAINAGE



CHEYENNE
METROPOLITAN
PLANNING
ORGANIZATION



Thank you for your input!

VAN BUREN AVENUE CORRIDOR STUDY

NON-MOTORIZED OPTIONS

(SHORT TERM)

SHARROWS, SIGNAGE, AND BIKE LANES



CHEYENNE
METROPOLITAN
PLANNING
ORGANIZATION



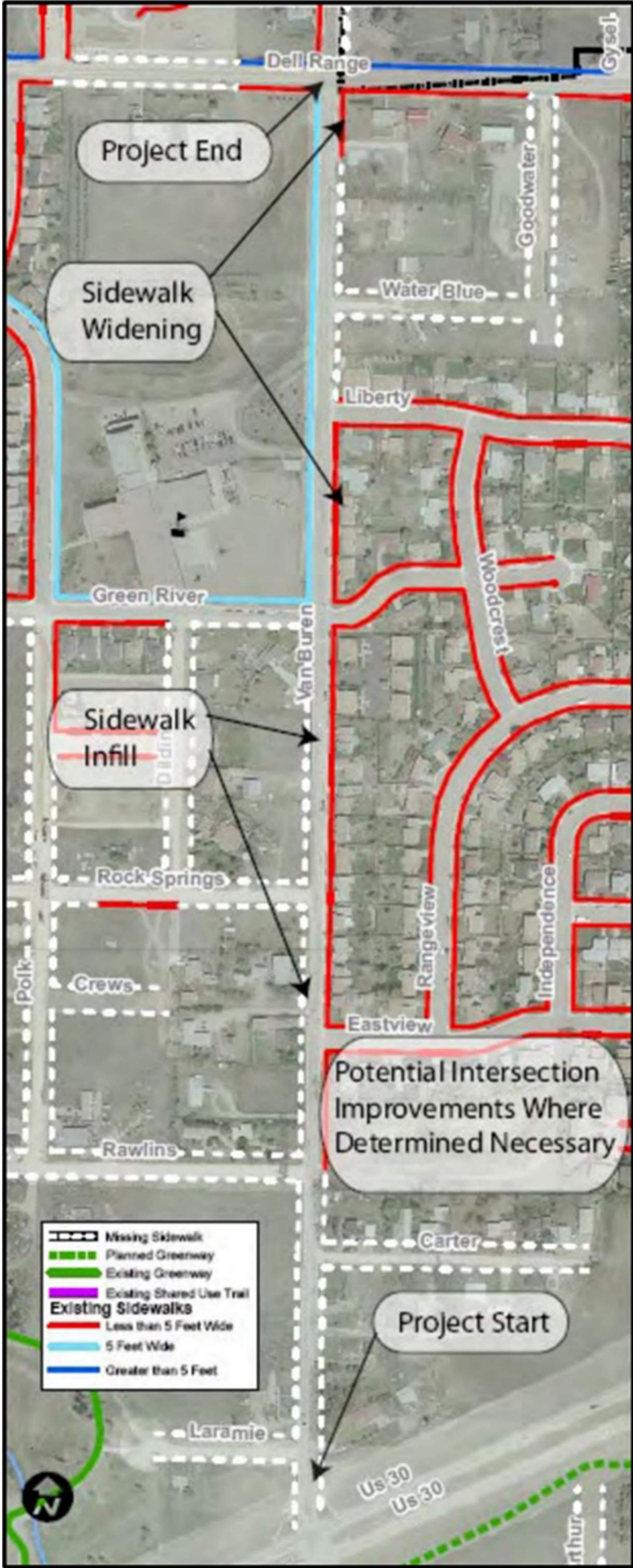
Thank you for your input!

VAN BUREN AVENUE CORRIDOR STUDY

NON-MOTORIZED OPTIONS

(MID TO LONG TERM)

SIDEWALK INSTALL & INFILL



MULTI-USE PATHWAY



MINI ROUNDABOUT



CHEYENNE
METROPOLITAN
PLANNING
ORGANIZATION

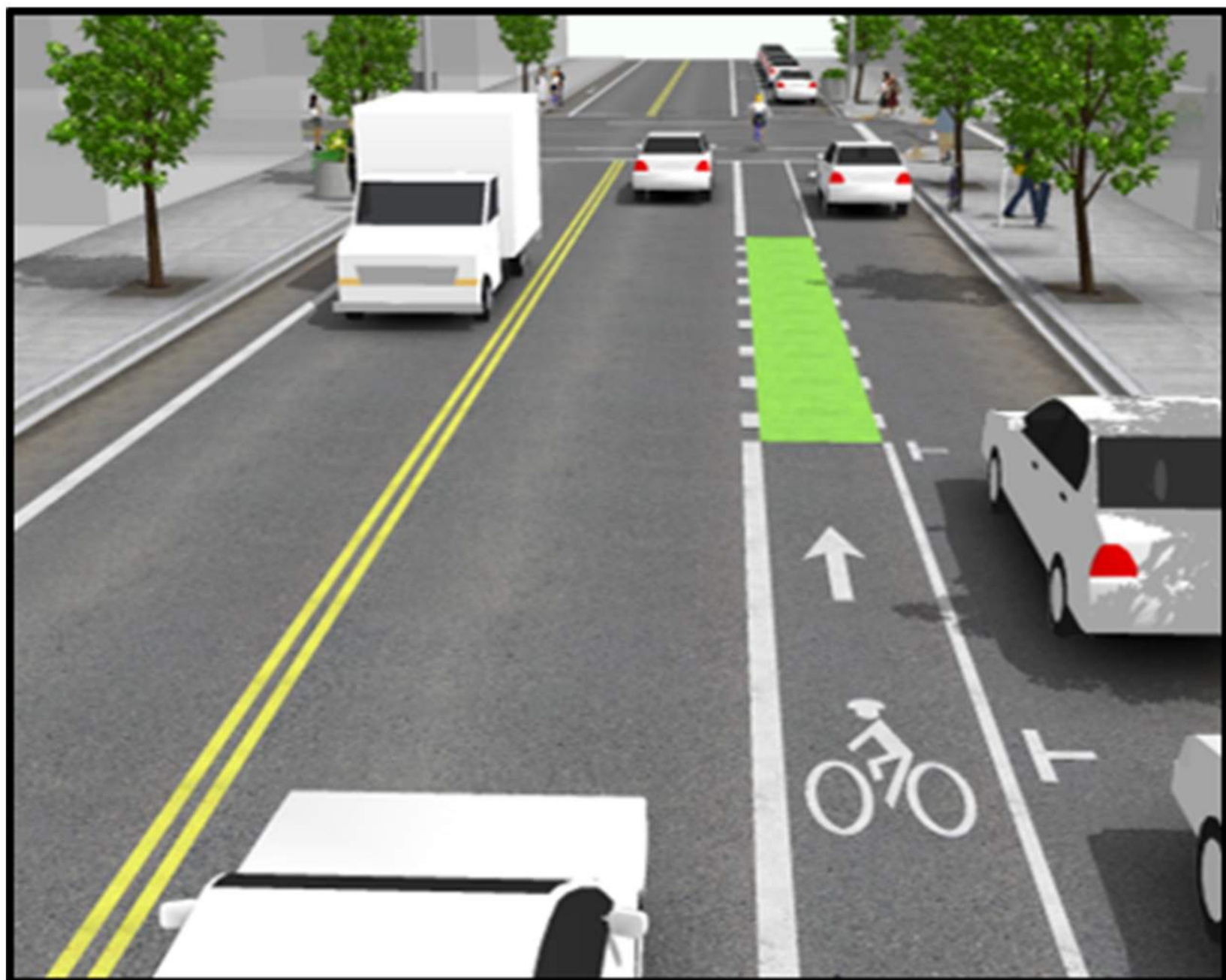


CONSULTANTS

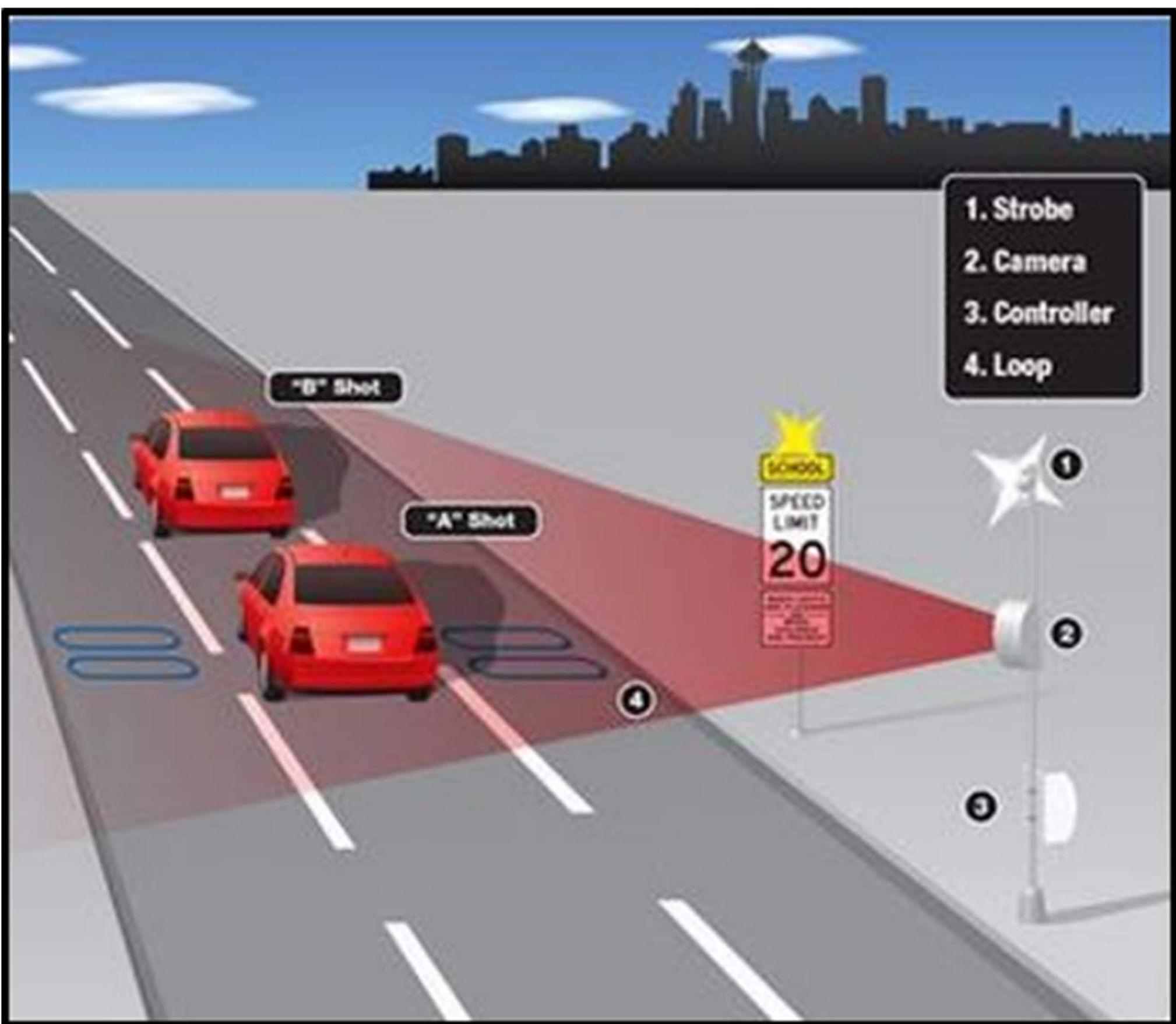
Thank you for your input!

VAN BUREN AVENUE CORRIDOR STUDY

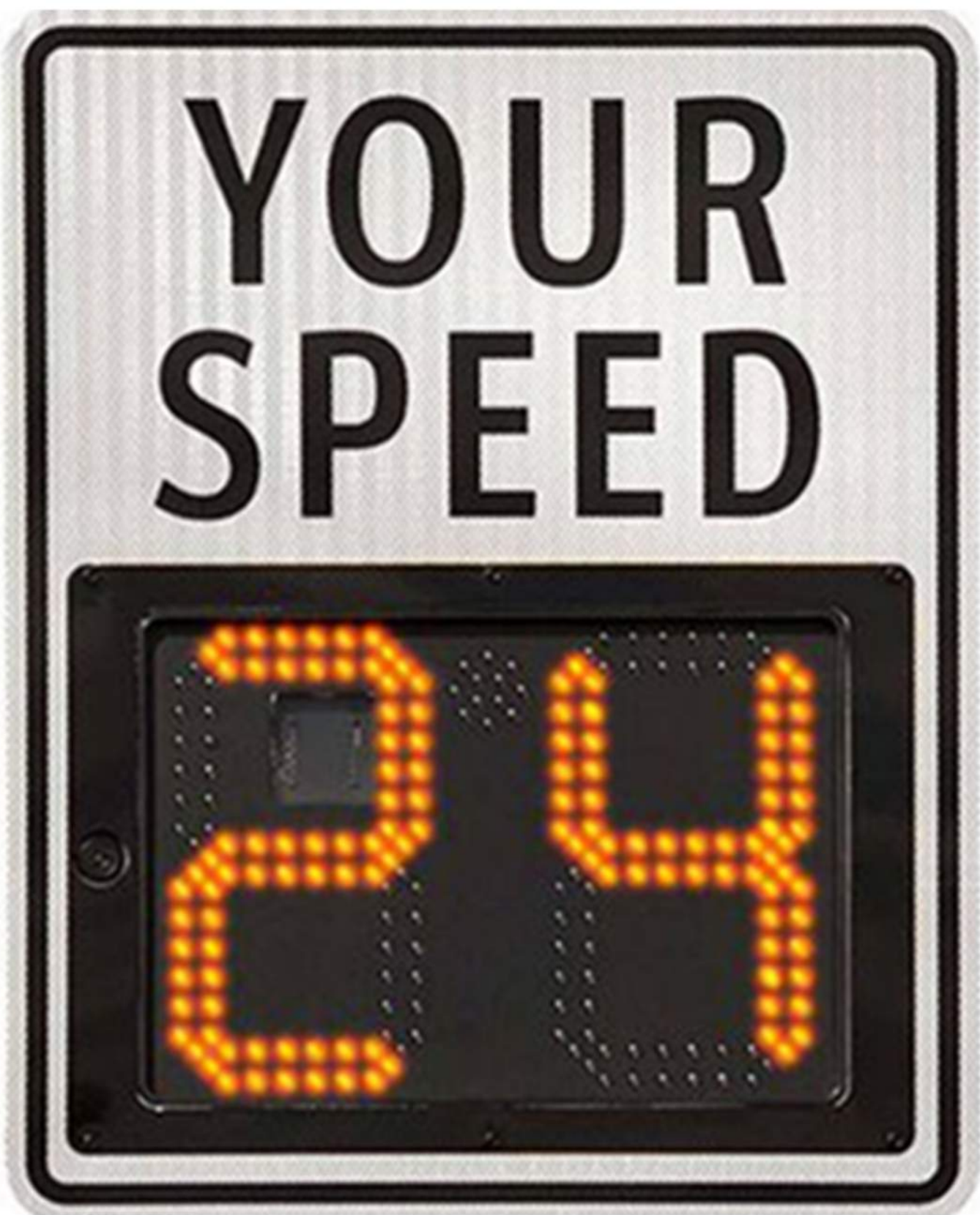
SPEED OPTIONS (SHORT TERM)



STRIPING



SPEED ENFORCEMENT



FEEDBACK SPEED SIGN



INCREASED SIGNAGE



CHEYENNE
METROPOLITAN
PLANNING
ORGANIZATION



CONSULTANTS

Thank you for your input!

VAN BUREN AVENUE CORRIDOR STUDY

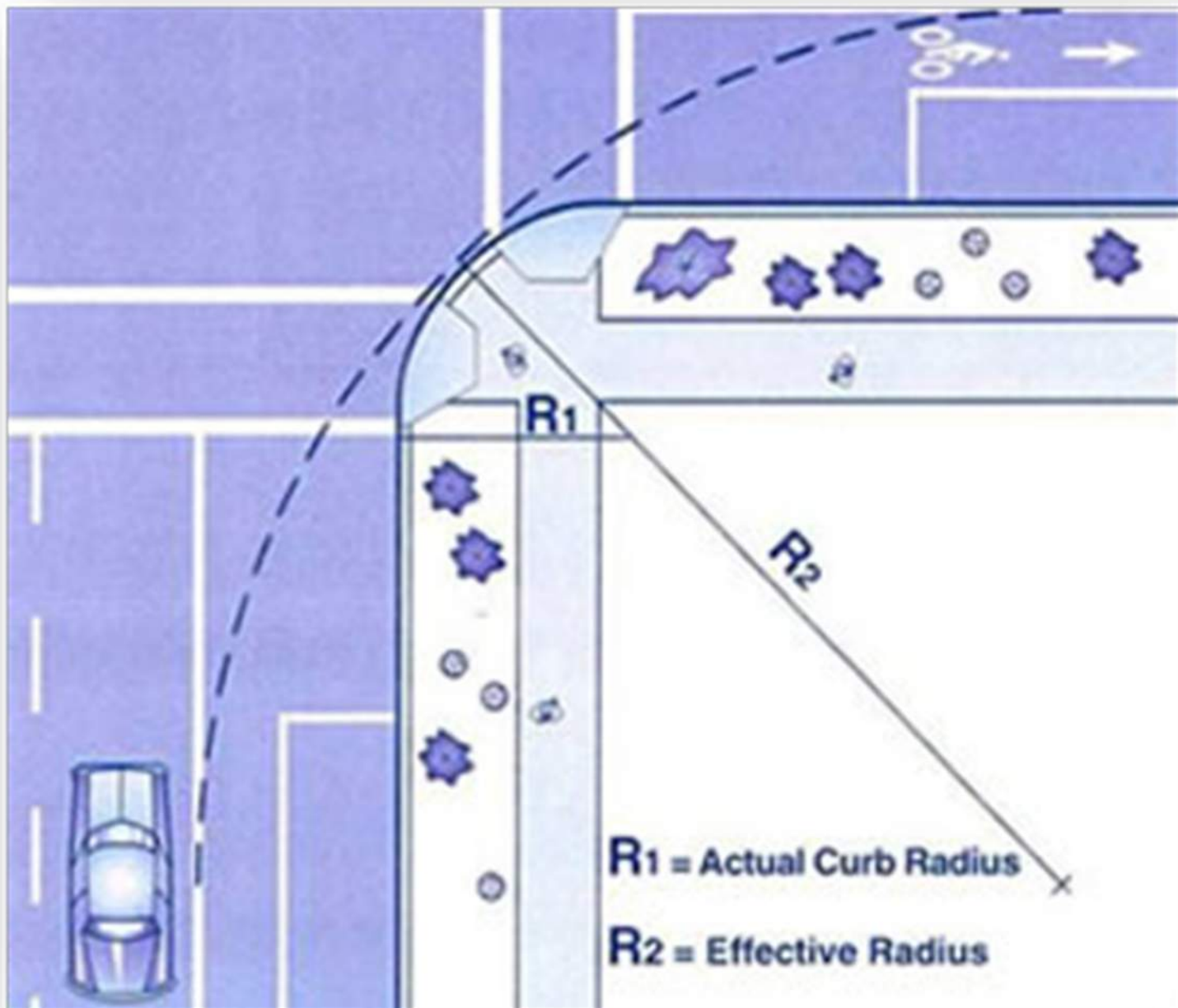
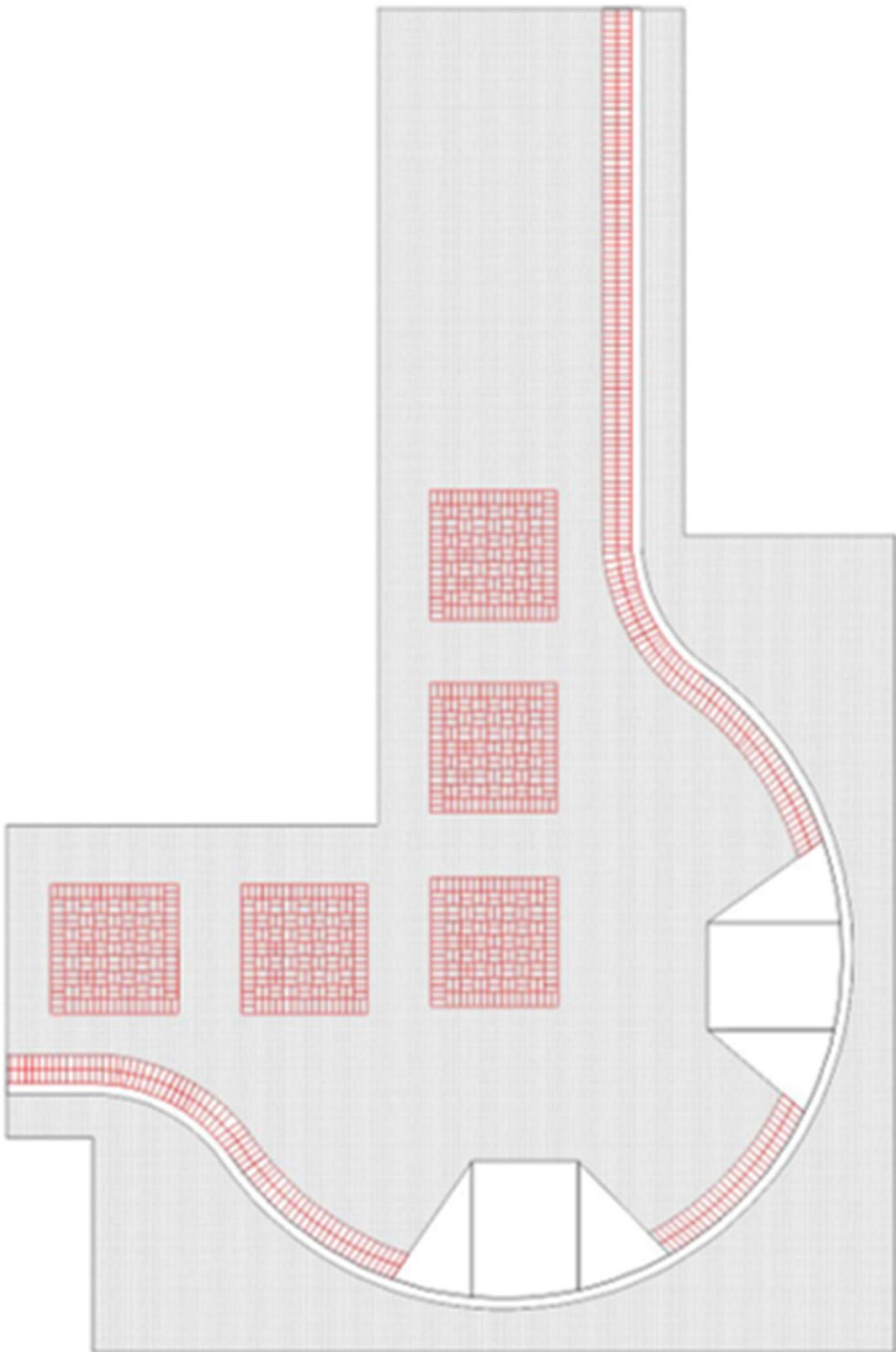
SPEED OPTIONS

(MID TO LONG TERM)

CROSSWALK MARKING AND SIGNAGE



BUMP OUTS



RAISED CURB RADII

DRAIN PANS



CHEYENNE
METROPOLITAN
PLANNING
ORGANIZATION



CONSULTANTS

Thank you for your input!