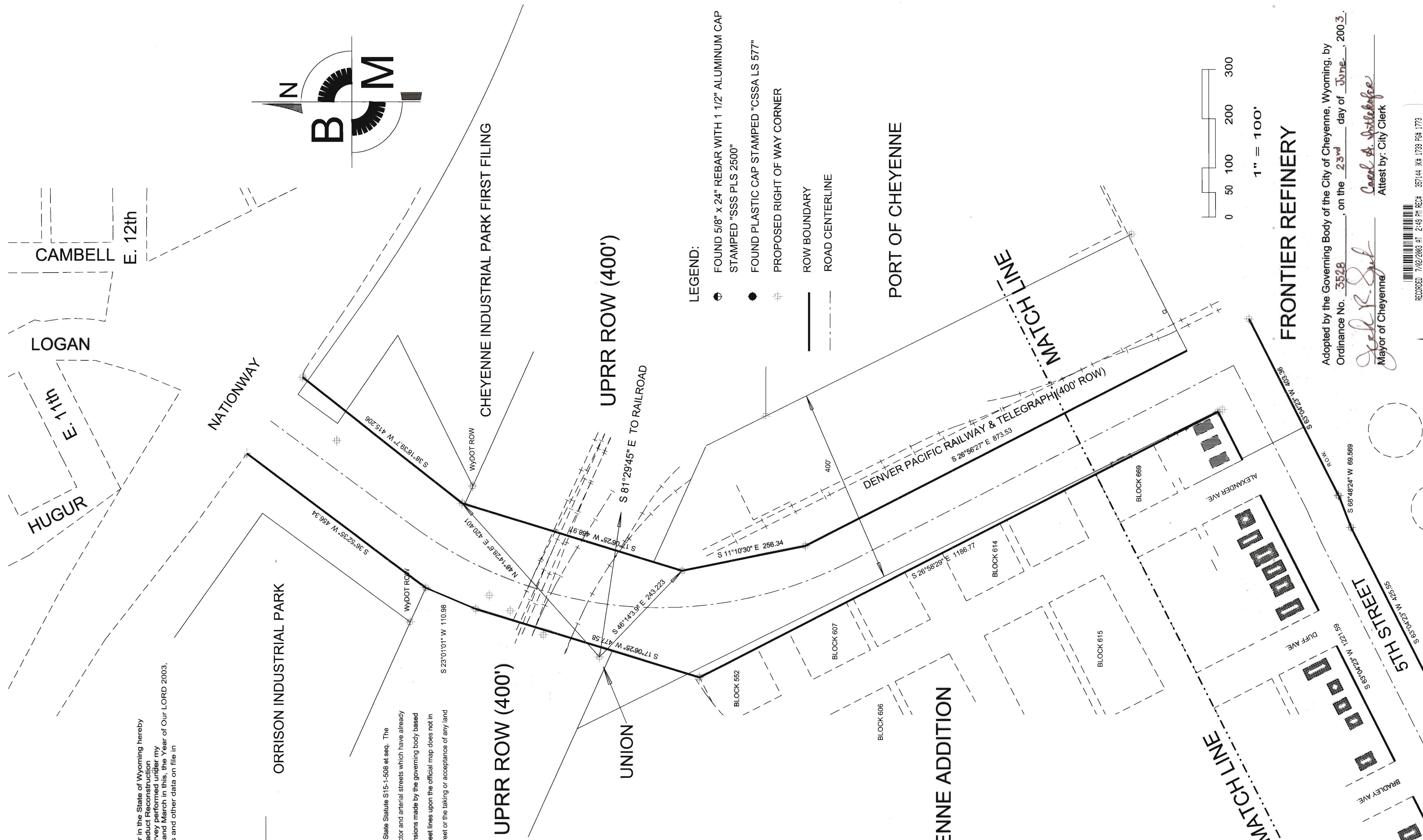


NORRIS VIADUCT RECONSTRUCTION OFFICIAL MAP OF CONSTRUCTION

Certificate of Surveyor
 State of Wyoming } ss
 County of Laramie }
 I, Roger H. Krum, a Licensed Land Surveyor in the State of Wyoming hereby
 certify that this Official Map of the Norris Viaduct Reconstruction
 has been prepared from field notes of a survey performed under my
 supervision during the months of February and March in this, the Year of Our LORD 2003,
 and from data acquired from surveys, plats and other data on file in
 the offices of Laramie County agencies.

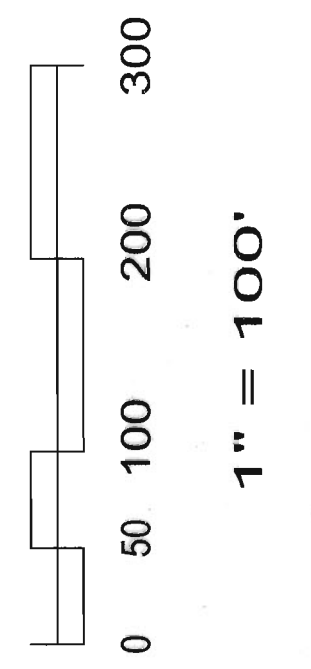


The creation of an official map is allowed by Wyoming State Statute S15-1-508 et seq. The
 purpose of an official map is to show locations of collector and arterial streets which have already
 been approved or proposed new streets or street extensions made by the governing body based
 on a major street plan. The placing of any street or street lines upon the official map does not in
 itself constitute the opening or establishment of any street or the taking or acceptance of any land
 for street purposes.



LEGEND:

- ⊕ FOUND 5/8" x 24" REBAR WITH 1 1/2" ALUMINUM CAP STAMPED "SSS PLS 2500"
- FOUND PLASTIC CAP STAMPED "CSSA LS 577"
- ⊕ PROPOSED RIGHT OF WAY CORNER
- ROW BOUNDARY
- - - ROAD CENTERLINE



FRONTIER REFINERY

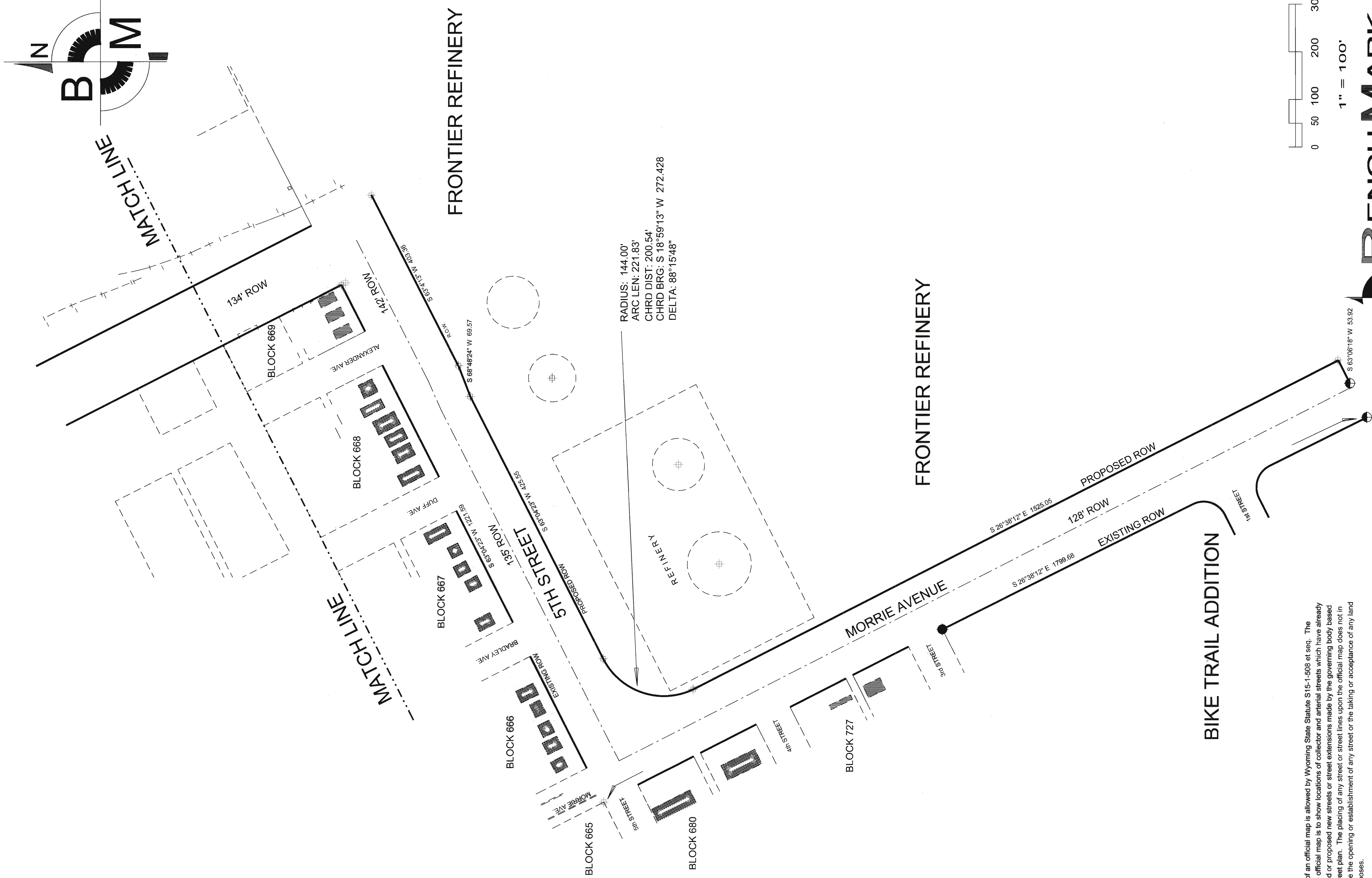
Adopted by the Governing Body of the City of Cheyenne, Wyoming, by
 Ordinance No. 3528 on the 23rd day of June, 2003.

Carol A. Jostelberg
 Mayor of Cheyenne
 Attest by: City Clerk



NORRIS VIADUCT RECONSTRUCTION

OFFICIAL MAP OF



The creation of an official map is allowed by Wyoming State Statute S15-1-508 et seq. The purpose of an official map is to show locations of collector and arterial streets which have already been approved or proposed new streets or street extensions made by the governing body based on a major street plan. The placing of any street or street lines upon the official map does not in itself constitute the opening or establishment of any street or the taking or acceptance of any land for street purposes.

Western Research & Development, Ltd.
Gary N. Giggsby P.E. & LSI
Roger H. Krum P.E. & P.L.S.
Cheyenne, Wyoming 82001
Phone: (307) 632-5656

RECORDED 7/22/2003 AT 2:43 PM REC# 35744 M# 1739 Pg# 1774
SARA K. LAHREB - CLERK OF DISTRICT COURT, IV DISTRICT OF CHEYENNE COUNTY, WY

B M
ENGINEERING & SURVEYING & PLANNING
OF CHEYENNE, P.C.
1620 Thomas Avenue Suite 420 Cheyenne, Wyoming 82001
(307) 634-6084 Fax: (307) 778-8010

