








# ARCHER TRAIL CONNECTOR



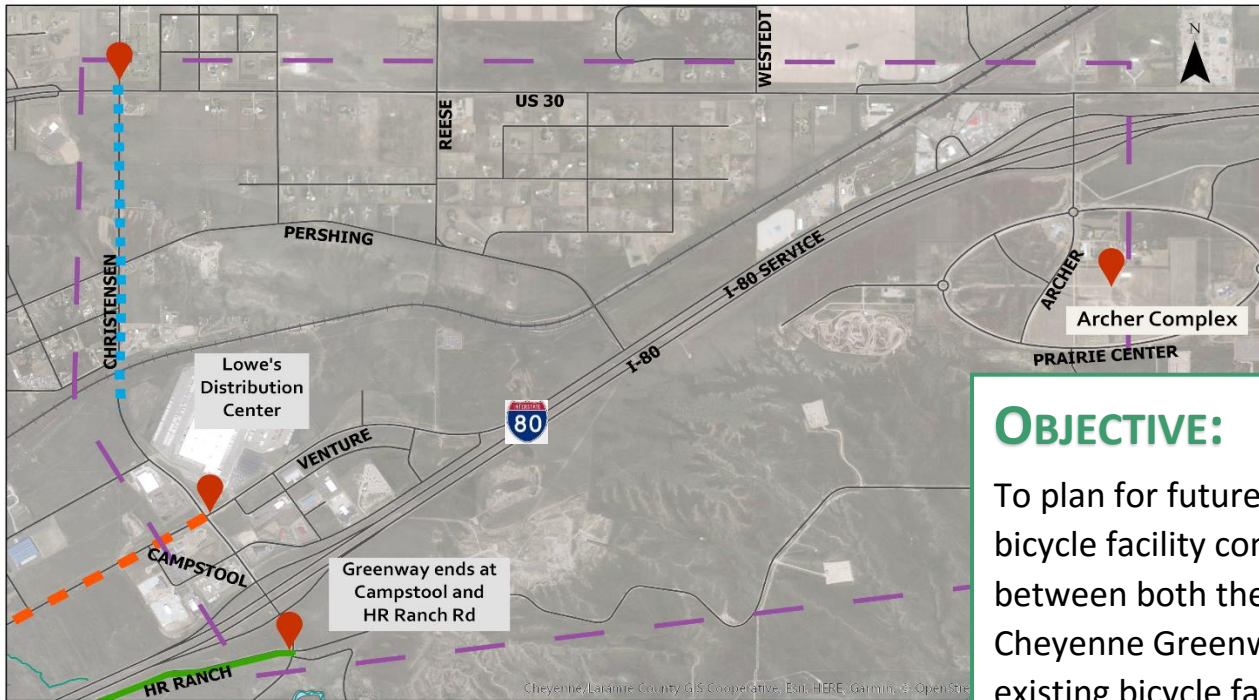
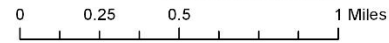
## Archer Trail Connector Plan

### Legend

-  Significant Locations
-  Future LEADS Trail
-  Christensen Road funded w/ Greenway
-  Study Area
-  Greenway



This map/data is made possible through the Cheyenne and Laramie County Cooperative GIS (CLCCGIS) Program and is for display purposes only. The CLCCGIS invokes its sovereign and governmental immunity in allowing access to or use of this data, makes no warranties as to the validity, and assumes no liability associated with the use or misuse of this information.



### OBJECTIVE:

To plan for future trail and bicycle facility connections between both the Greater Cheyenne Greenway and existing bicycle facilities to the Archer Complex.

## PROJECT INFORMATION

As the metropolitan area continues to expand to the east the Cheyenne Metropolitan Planning Organization is looking to the future with non-motorized trail system expansion and bicycle facility expansion in eastern Cheyenne. This project will explore:

- Within this study area are non-motorized recreation amenities desired?
- How would a trail be used: Bicycling? Walking? Jogging? Horse Back Riding?
- Would you prefer a trail be hard-surface or soft-surface?
- Are bicycle facilities to the Archer Complex desired?
- What does the future of the non-motorized trail system look like for eastern Cheyenne?



### Find us Online:

[www.plancheyenne.org](http://www.plancheyenne.org)

### For more information contact:

Nancy Olson

307-638-4366 or

[nolson@cheynnemopo.org](mailto:nolson@cheynnemopo.org)



Join us at the  
Public Open House!

Tuesday, January 29, 2019

5:30 – 7:00 p.m.

Fire Training Complex  
7222 Commerce Circle

Take our on-line survey!

<https://www.surveymonkey.com/r/7VHBJ3D>