

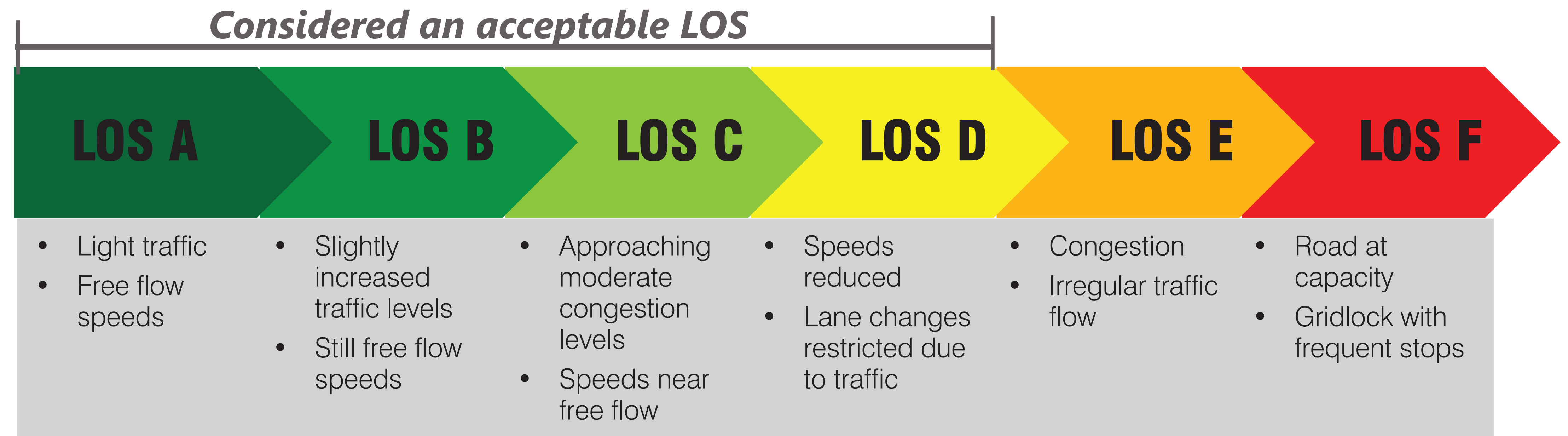
Intersection Level of Service (LOS)



Delay (seconds) Signalized	LOS	Flow Conditions	Delay (seconds) Unsignalized
<10	A		<10
11-20	B		10-15
21-35	C		15-25
36-55	D		25-35
56-80	E		35-50
>80	F		>50

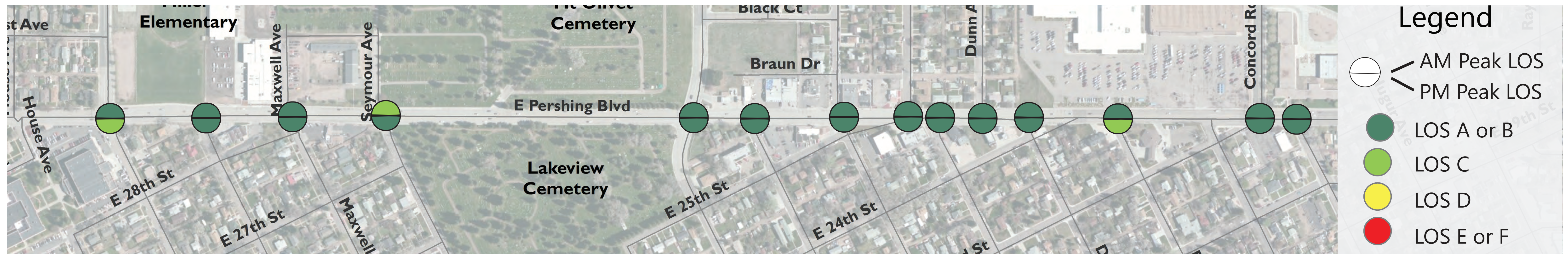
Delay at intersection per vehicle

LOS characterizes the performance of an intersection's traffic flow, ranging from LOS A to LOS F. These grades represent the perspective of drivers and are an indication of the comfort and convenience associated with driving.

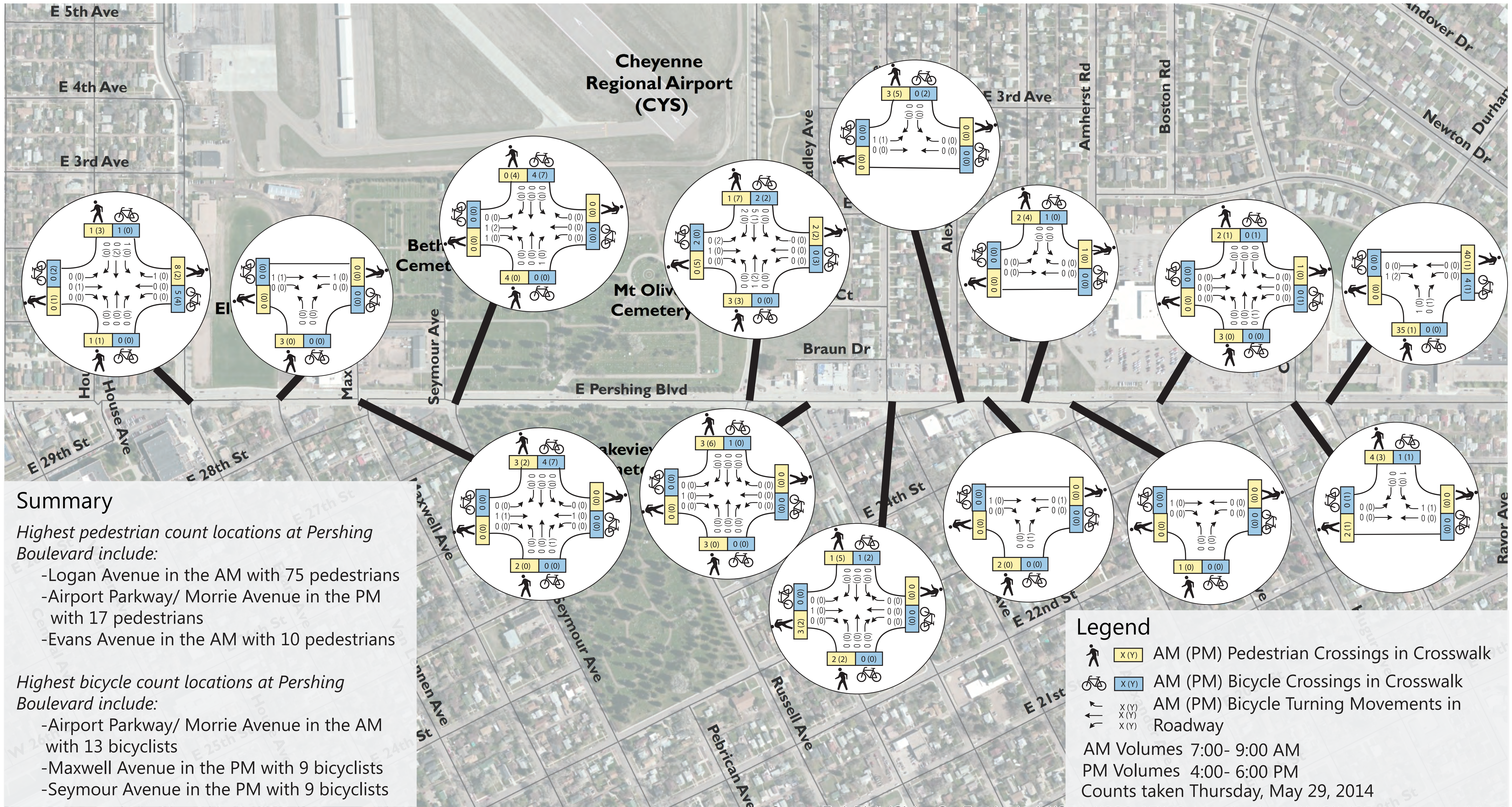


Summary:

- Most volumes are on the through EB/WB of Pershing Boulevard.
- Top 3 volume intersections are: Evans Avenue, Morrie Avenue/Airport Parkway, Seymour Avenue
- All intersections operate acceptably.

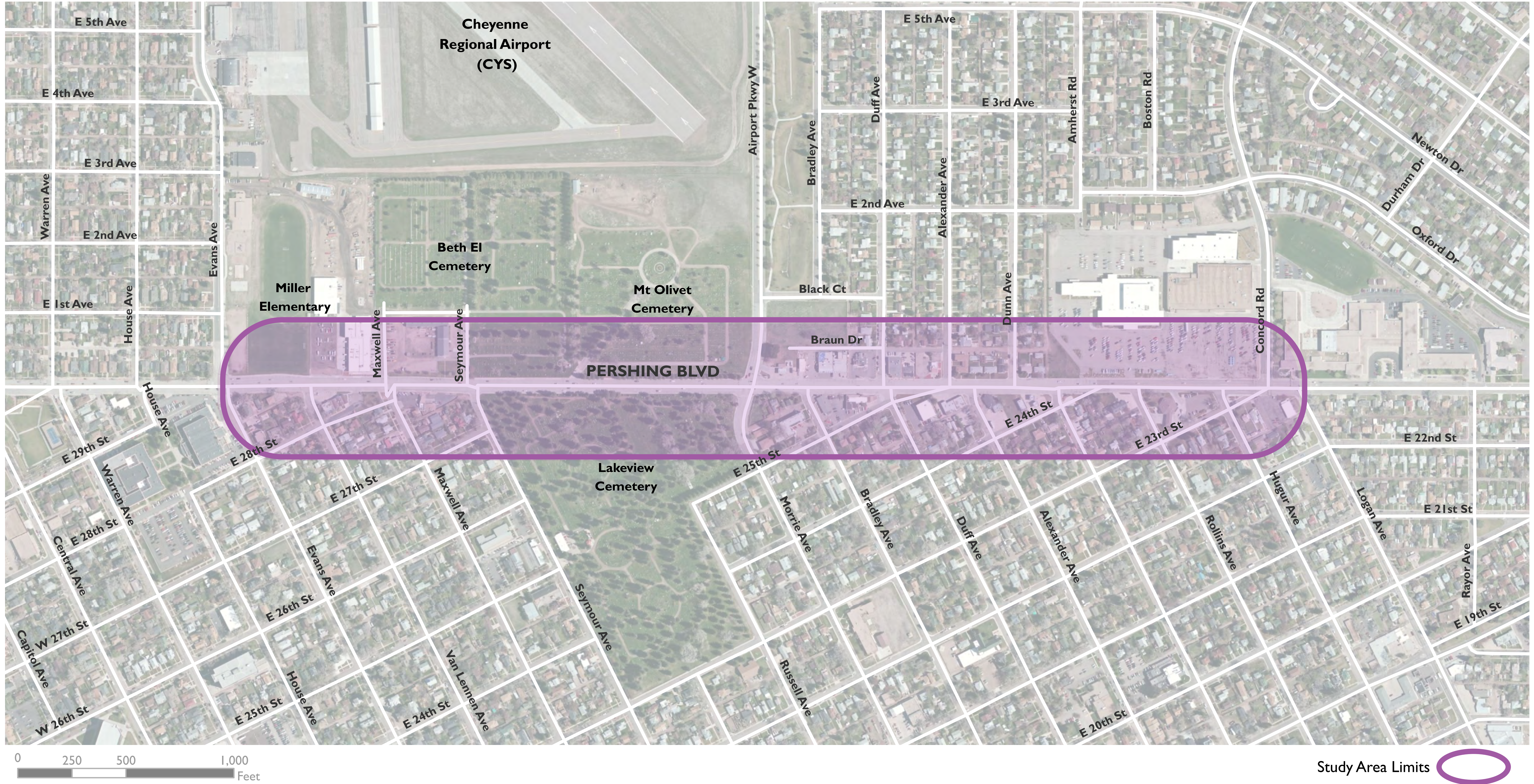


Pershing Boulevard Complete Streets Existing Intersection Level of Service



Pershing Boulevard Complete Streets Existing Bicycle and Pedestrian Volumes

Please identify locations in the study area with concerns and recommendations.



Pershing Boulevard Complete Streets Study Area

Pershing Boulevard Complete Streets Overview



GOALS

TO LOOK AT OPTIONS TO MAKE IT SAFER, EASIER AND MORE PLEASANT TO WALK AND RIDE ON AND ACROSS PERSHING BOULEVARD BY:

- Creating a better environment for businesses and their customers
- Creating safer options for bicyclists, pedestrians, and wheelchair users to cross the street
- Creating options for road users of all ages and abilities to travel along Pershing Boulevard safely



NEXT STEPS

1. Concept Alternatives
2. Preferred Concept Plan
3. Draft Report
4. Design Plan Presentation

WHAT HAS BEEN DONE SO FAR

- Walking Audit on Pershing from Morrie Avenue to Dunn Avenue- June 2014
- Business Interviews of 11 businesses along Pershing Boulevard- June 2014



PROJECT TEAM

Cheyenne Metropolitan Planning Organization (MPO) is working with the consultant team of Fehr & Peers and Russell + Mills Studio, Inc.

GET INVOLVED!

HAVE A SAY IN IDEAS TO IMPROVE SAFETY ON PERSHING BOULEVARD BY GOING TO WWW.PLANCHEYENNE.ORG/ENGAGE

FOR QUESTIONS OR COMMENTS CONTACT SREYOSHI CHAKRABORTY (PROJECT MANAGER) AT 638-4384 OR SCHAKRABORTY@CHEYENNEMPO.ORG

Pershing Boulevard Complete Streets

Overview

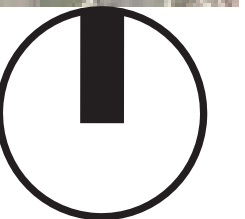


Corridor-wide Issues:

- limited line of sight
- pedestrian crossing concerns
- difficulty turning left onto Pershing from stop controlled side street or driveway
- insufficient speed control and enforcement
- lack of traffic calming devices
- insufficient lighting
- attached and narrow sidewalks with insufficient landscaping
- need for gateway treatments
- misaligned intersections
- no dedicated bike facilities

Pershing Boulevard Complete Streets

What We've Heard: Walking Audit and Business Interviews



**Pershing Boulevard Complete Streets
Overall Corridor Design Influences**

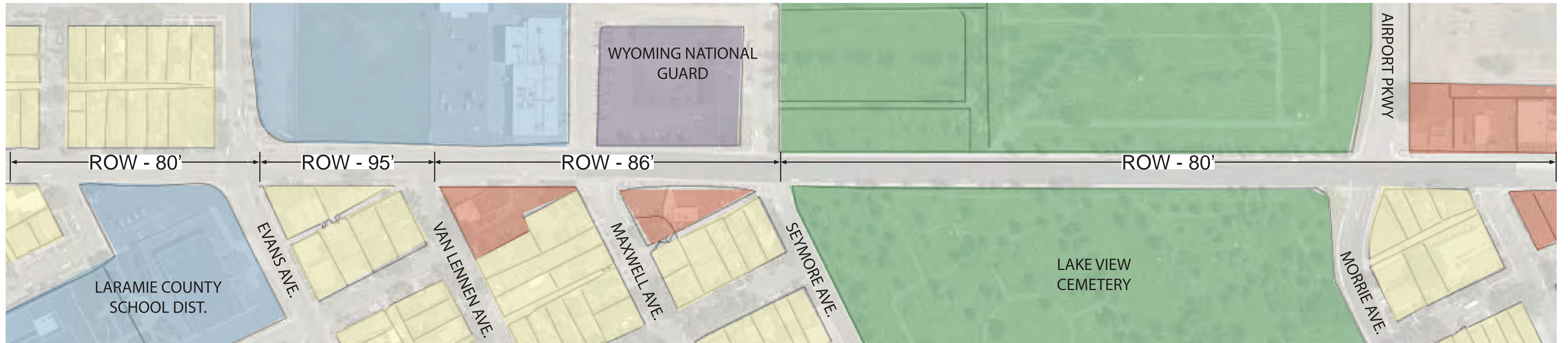


LEGEND:

- Existing access points
- Opportunity for gateway
- Street tree gap
- Commercial zones
- Opportunity for parkway median
- Sidewalk widening/enhancements
- Commercial/mixed use oriented streetscapes
- Existing access points

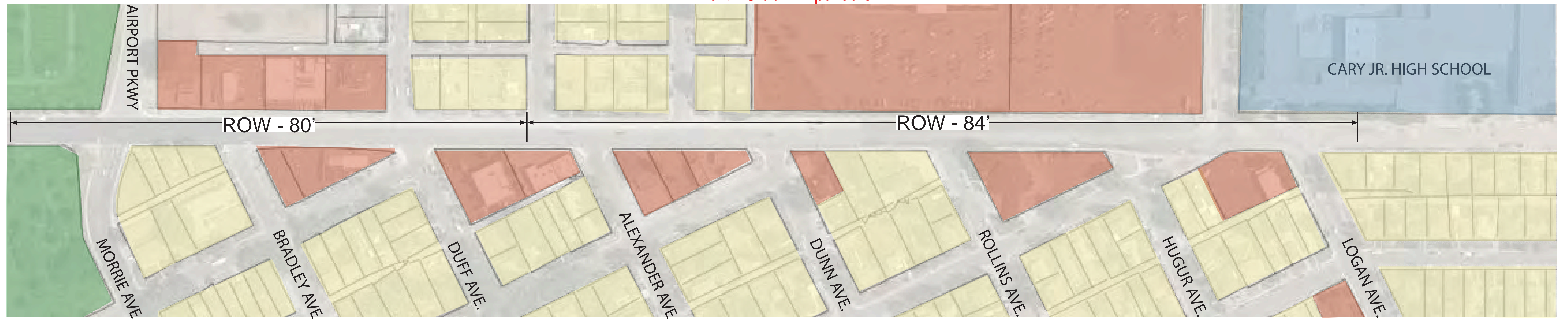
Pershing Boulevard Complete Streets Opportunities and Constraints

North Side: 6 parcels



South Side: 10 parcels

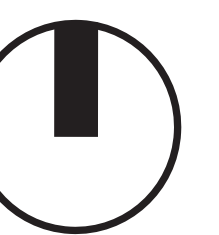
North Side: 14 parcels



TOTAL NUMBER OF PARCELS:
 North Side: 20 parcels
 South Side: 24 parcels

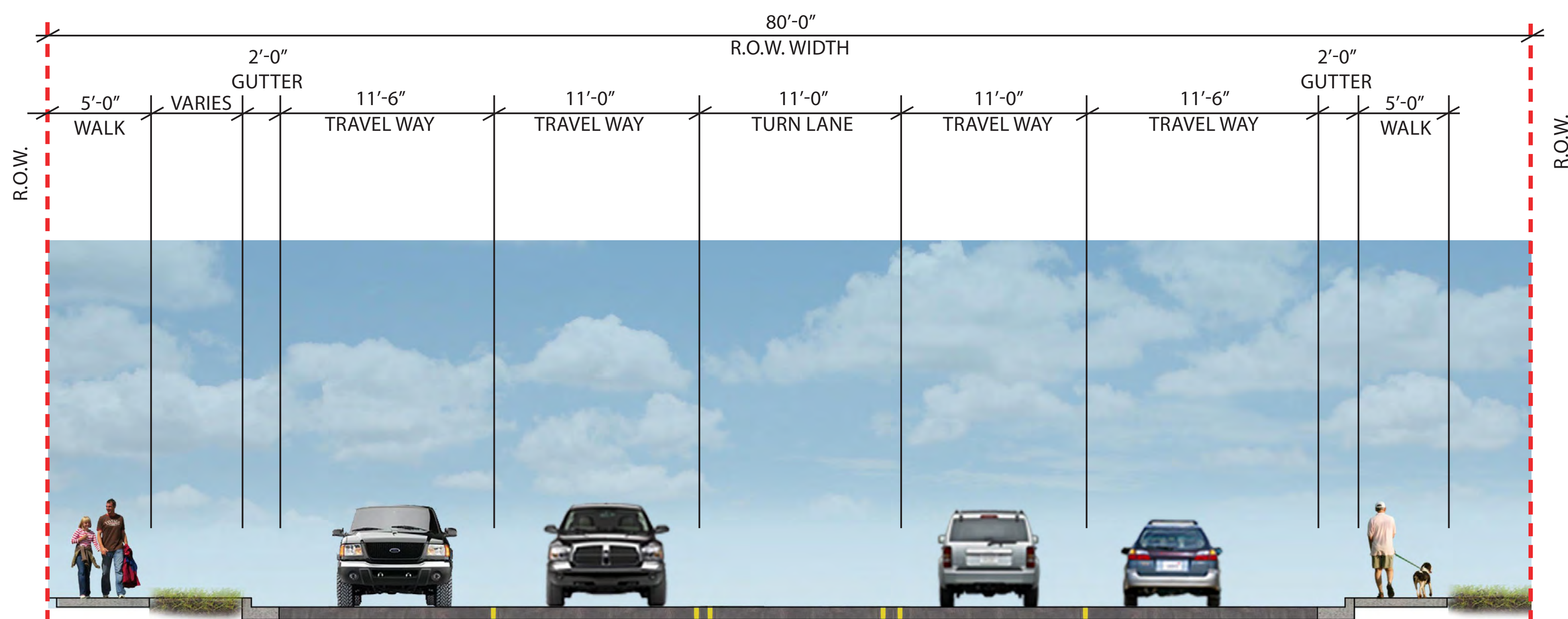
South Side: 14 parcels

*Existing Right-of-Way widths estimated from as-built drawings

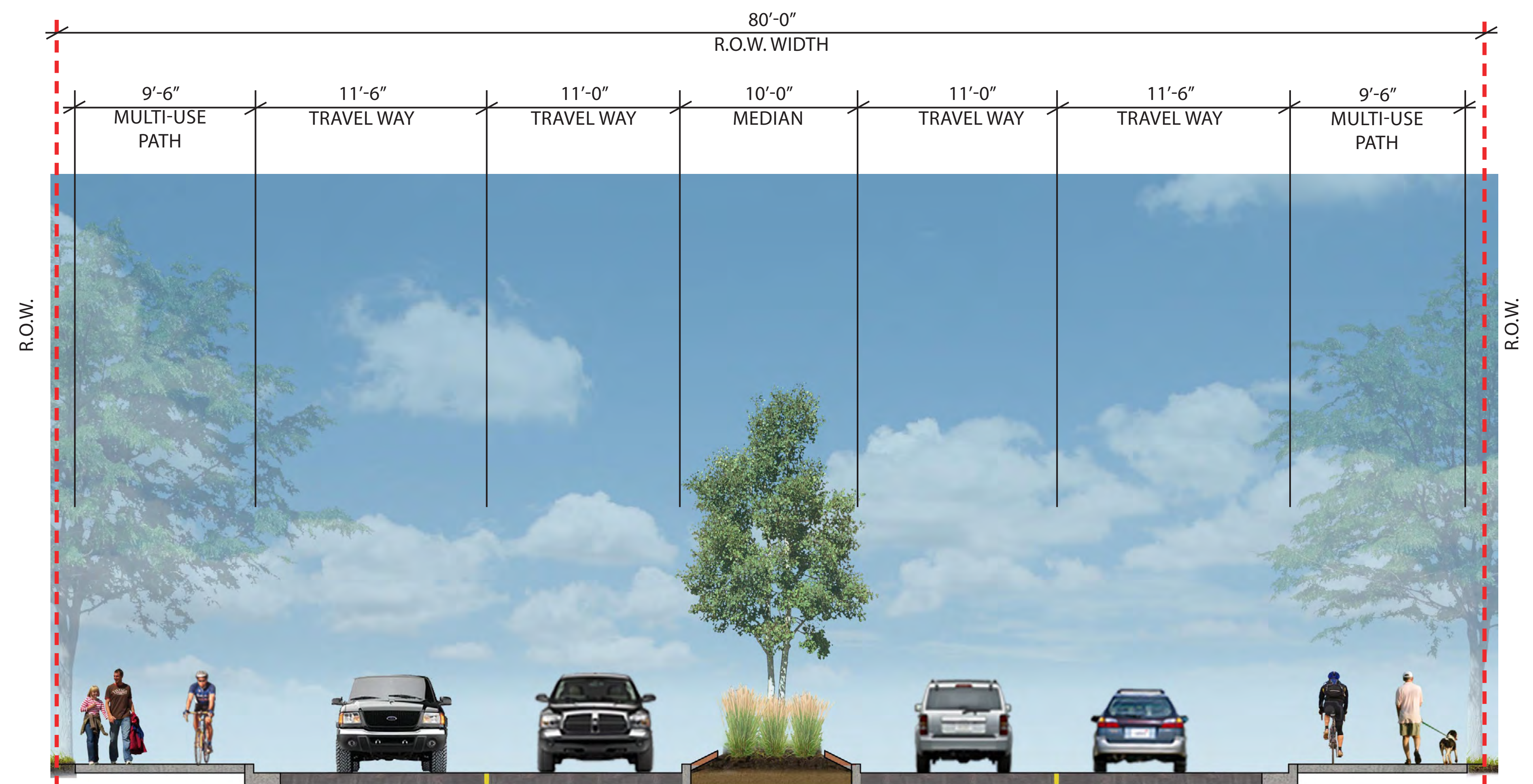


- LEGEND:**
- Residential
 - Municipal/City
 - Commercial/Mixed Use
 - State/Federal
 - Cemetery

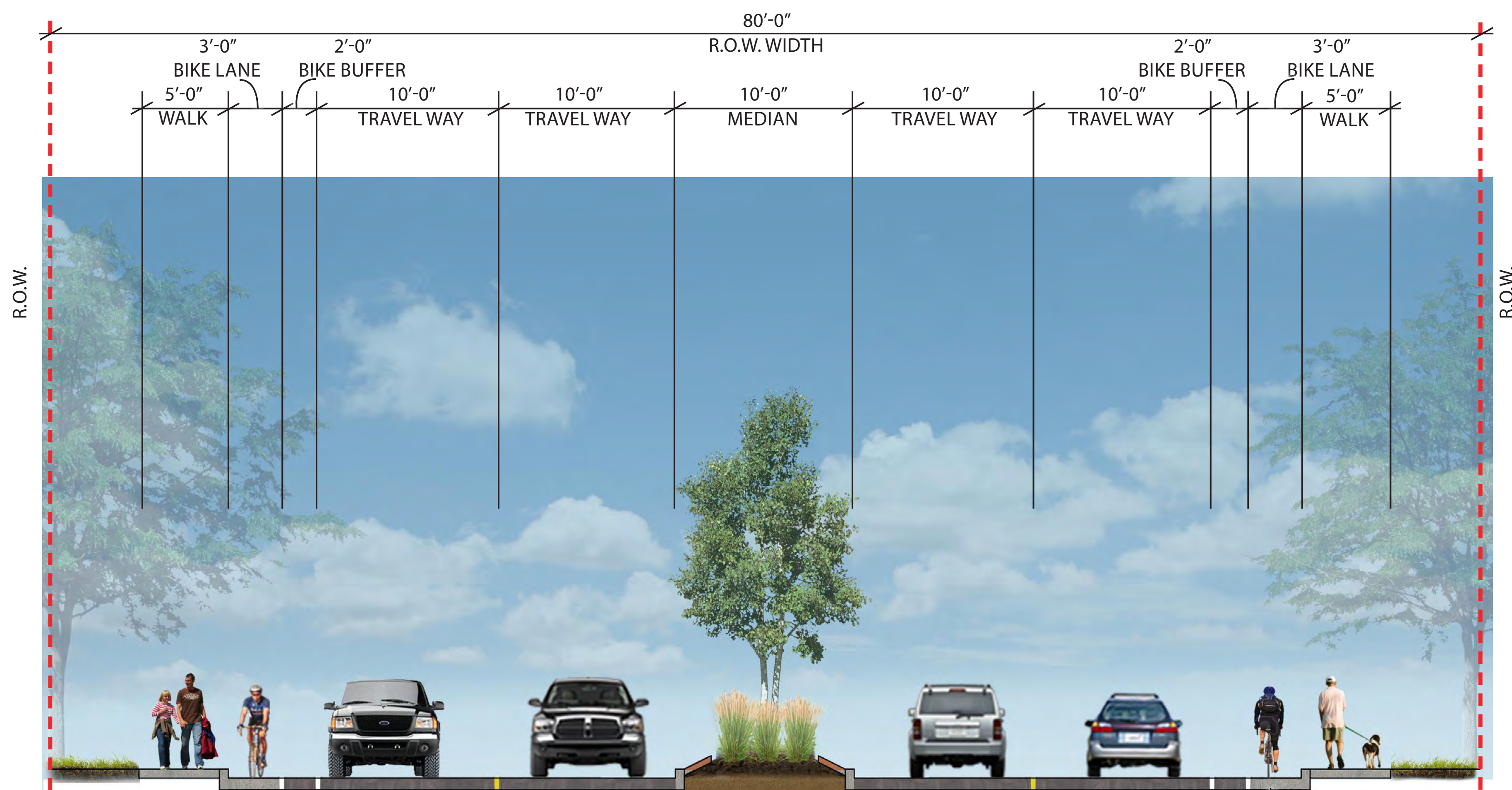
Pershing Boulevard Complete Streets Right of Way Width and Parcel Diagram



Existing Street Section

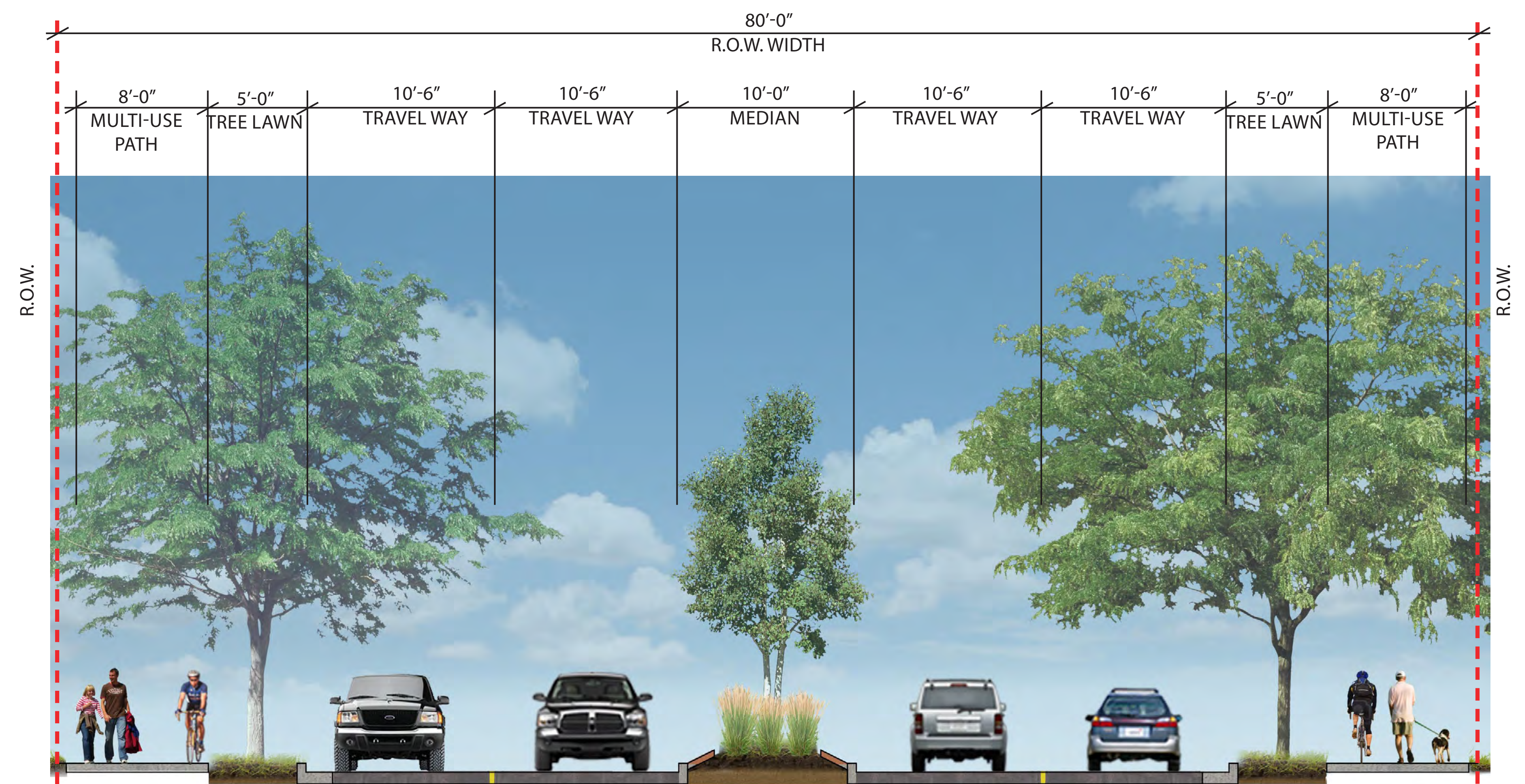


Option 2 - 9.5' multi-use path with center median



Option 1 - Buffered Bike Lane with center median and 10' travel lanes

CONC. GUTTER
EXTENSION, BOTH
SIDES



Option 3 - 8' multi-use path with center median 10.5' travel lanes and 5' tree lawn

Placemaking Elements - Roadway Treatments



Gateway monuments



Medians for human scale

Median as pedestrian refuge

Pershing Boulevard Complete Streets

Placemaking Elements - Streetscape



Ground floor activation



Tree grates and guards



Benches



Seat Walls



Pershing Boulevard Complete Streets

Placemaking Elements - Streetscape



Stained colored concrete



Concrete pavers



Painted for safety



Colored/textured concrete crosswalk



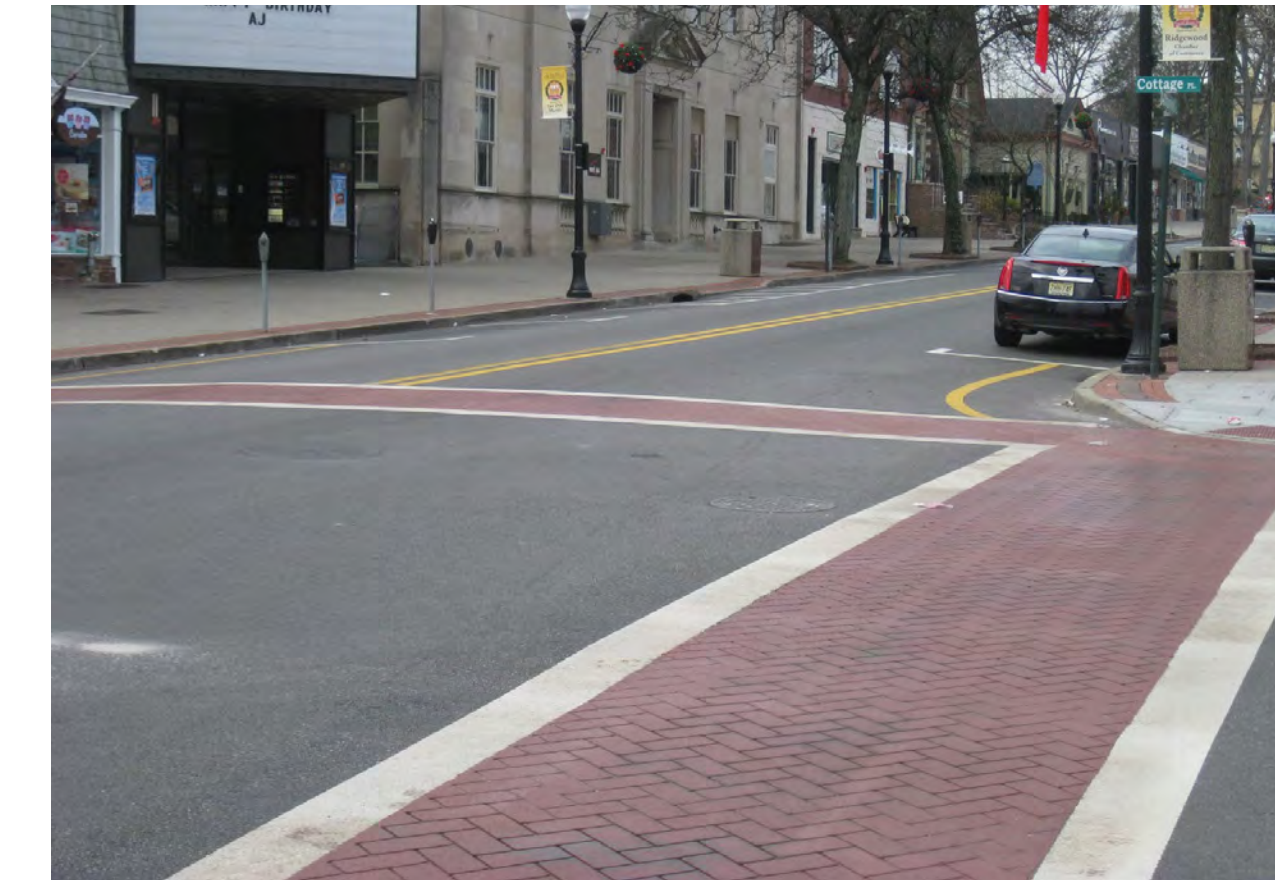
Colored concrete w/sandblasted pattern



Pavers at intersections



Patterned colored concrete



Pavement - Crosswalks

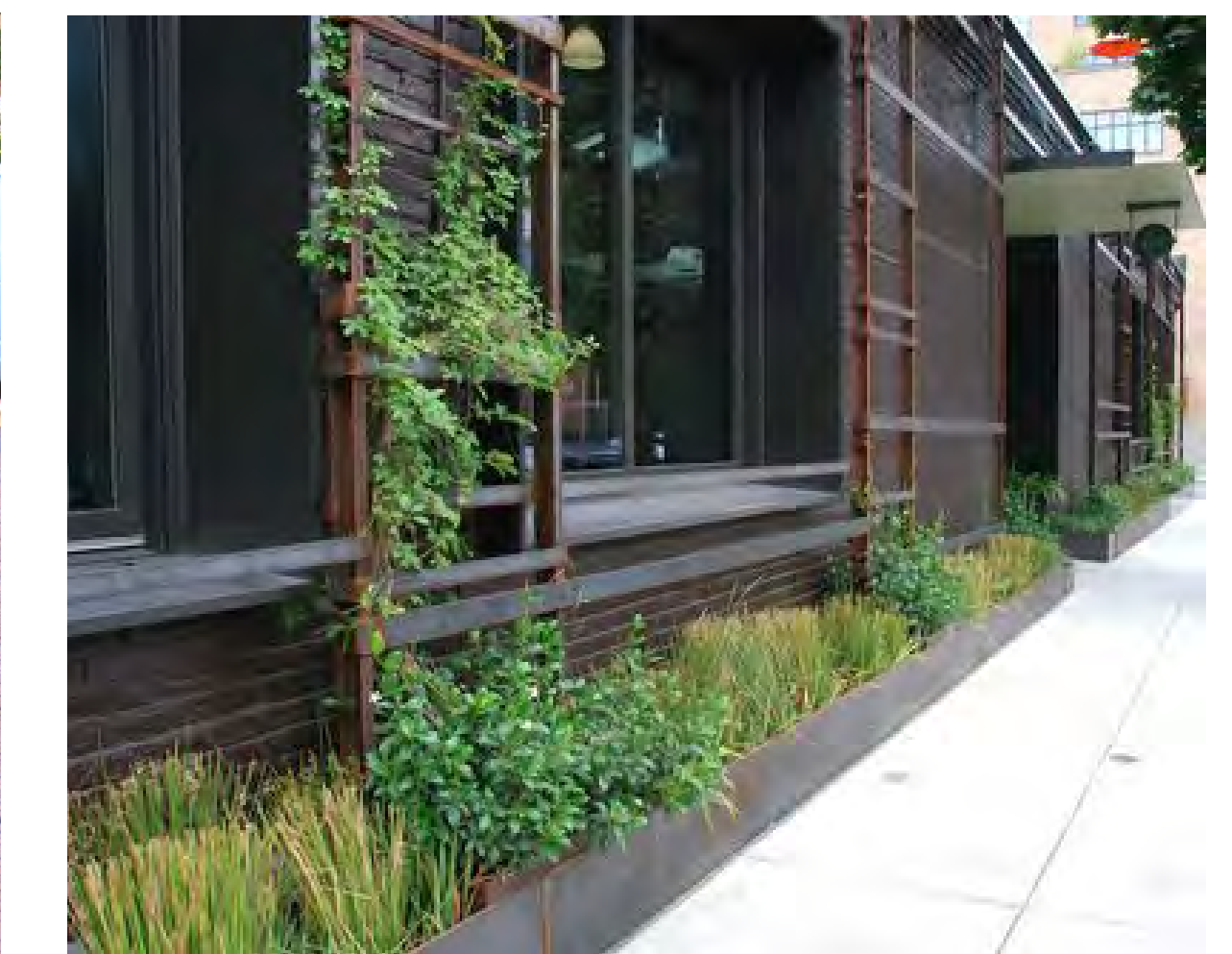


Stamped asphalt crosswalk

Pavement



Fixed Hanging Baskets



Planters

Pershing Boulevard Complete Streets

Placemaking Elements - Streetscape



Median Lights



Banners on Lights



Historic Lighting



Historic Lighting



Planting options



Historic Lighting



Street/Pedestrian combination

Street/Pedestrian lighting - full cut-off LED

Pershing Boulevard Complete Streets